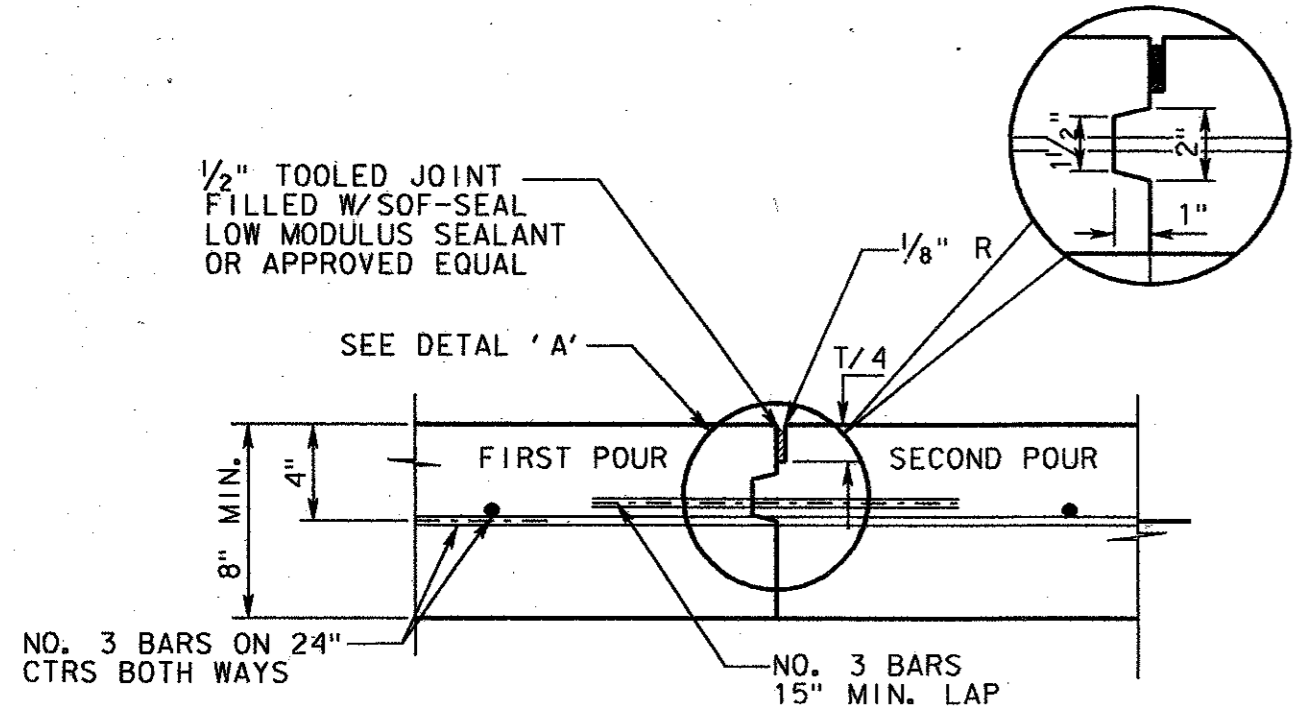
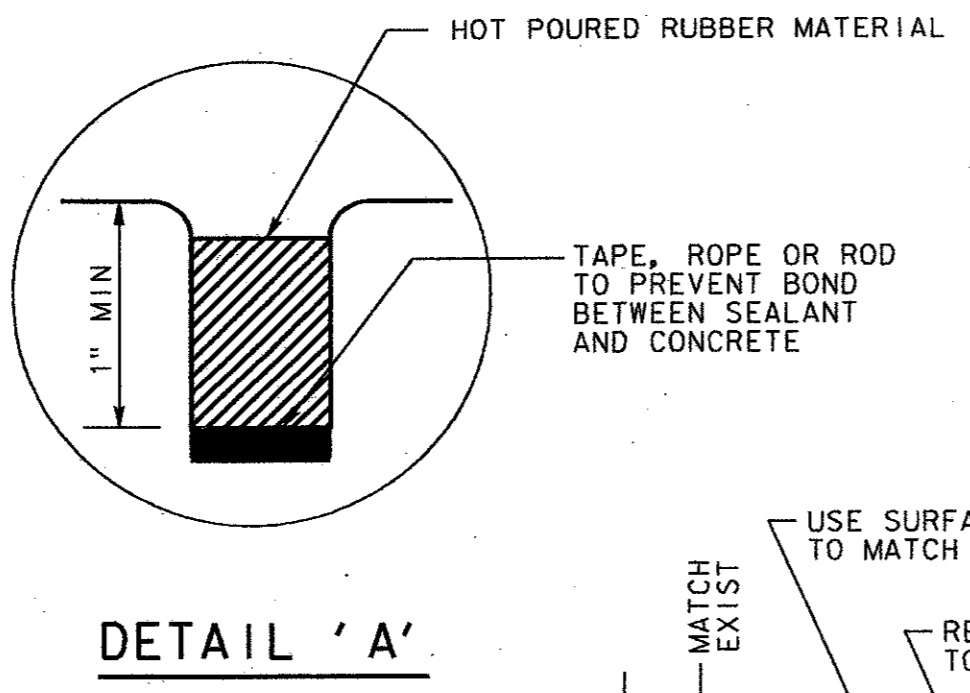


SAWED DUMMY JOINT
(TRANSVERSE DUMMY JOINT TO BE SPACED 16" MIN. & 22" MAX. TO MATCH EXISTING)

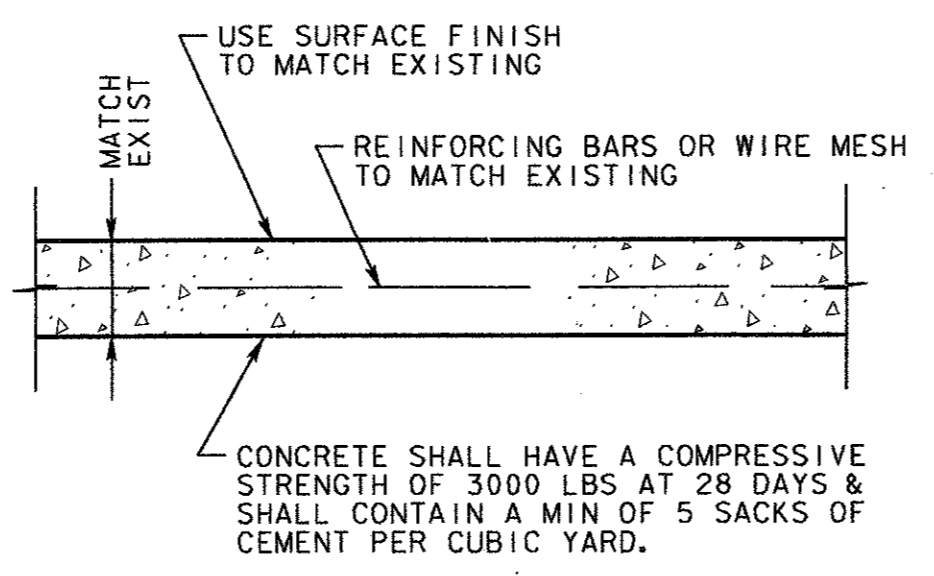


CONSTRUCTION JOINT FOR PAVEMENTS
FOR 8" THICKNESS PAVEMENT AND LONGITUDINAL JOINTS

NOTE:
CONTRACTOR SHALL PROTECT KEYWAY PRIOR TO SECOND POUR. IF LONGITUDINAL KEYWAY IS DAMAGED, CONTRACTOR SHALL REPAIR WITH THE USE OF LONGITUDINAL BUTT JOINT. DRILL DOWELS INTO FIRST POUR.
T=PAVEMENT THICKNESS
THICKENED EDGES ARE REQUIRED FOR FUTURE WIDENING ONLY.

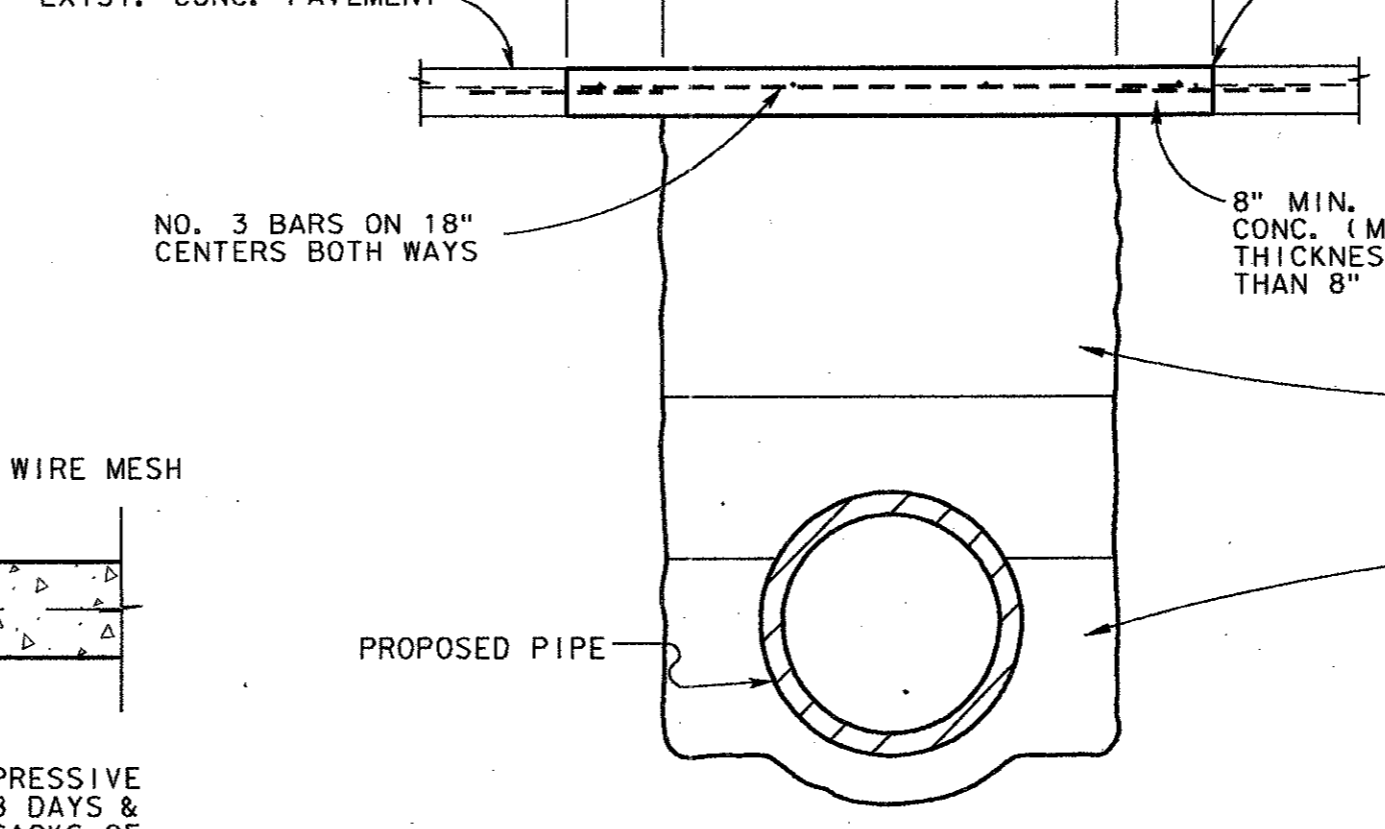


DETAIL 'A'

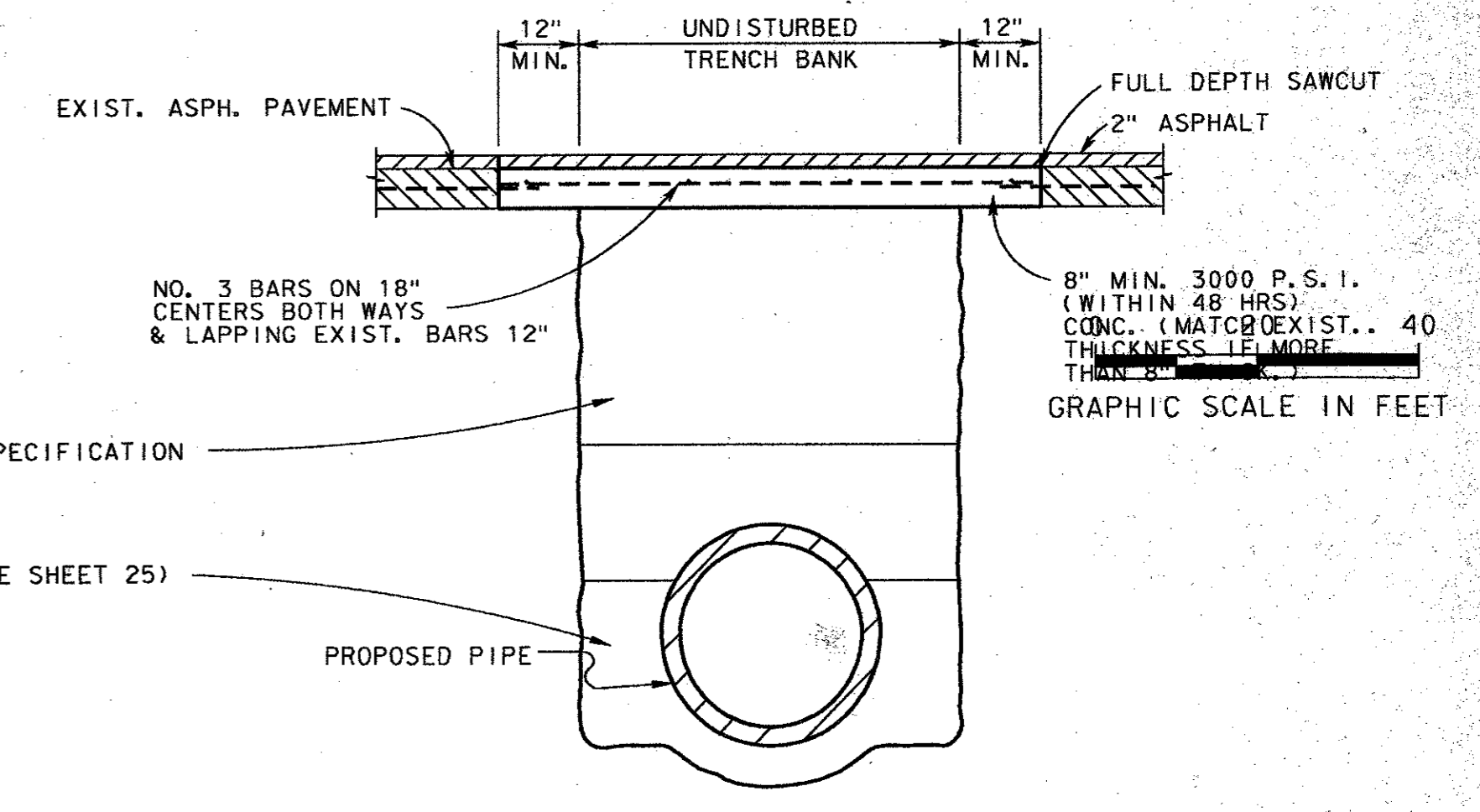


CONCRETE RIPRAP DETAIL

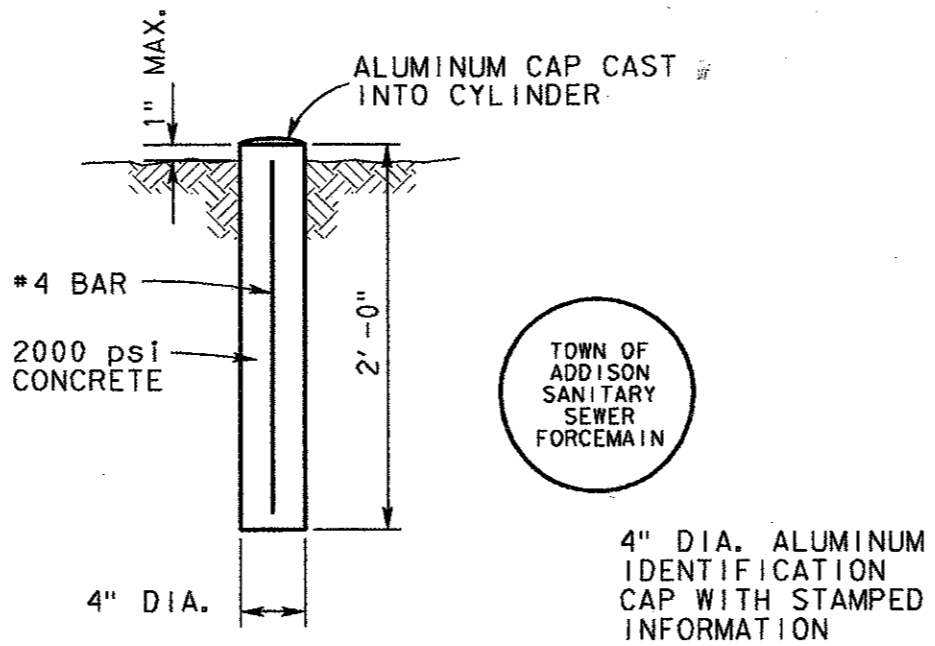
NOTE:
SAWCUT SHALL BE SUBSIDIARY TO THE BID ITEM CONCRETE PAVEMENT & ASPHALT PAVEMENT NO SEPARATE PAY ITEM.



CONCRETE STREET OR DRIVEWAY REPAIR

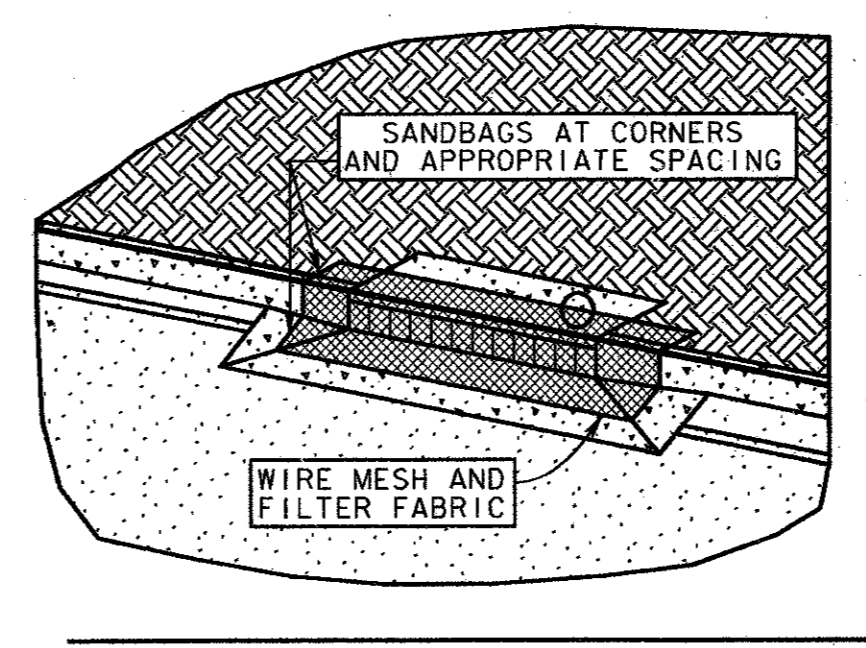


ASPHALT STREET OR DRIVEWAY REPAIR

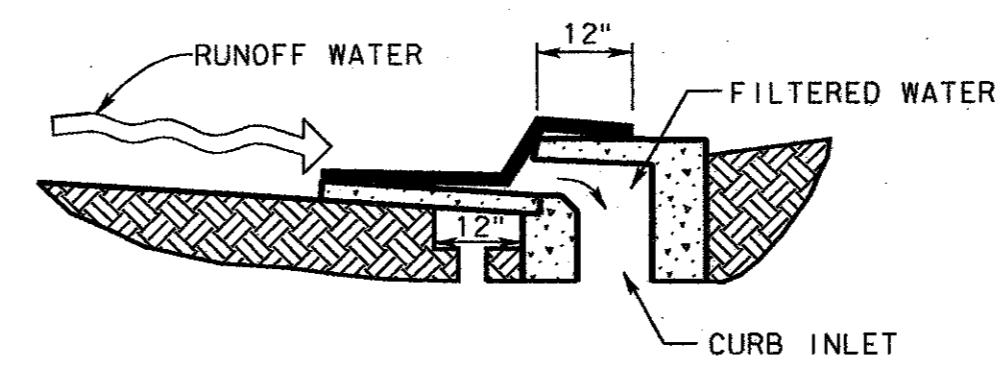


FORCE MAIN MARKER DETAIL

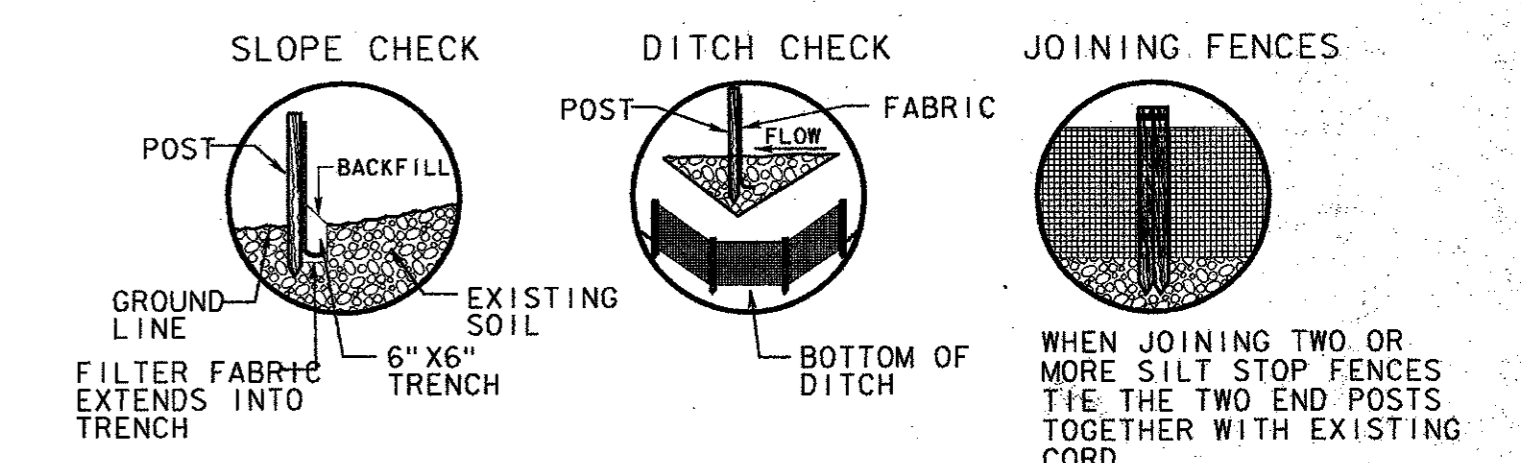
LOCATE FORCE MAIN MARKERS ON CENTERLINE AT 300 FEET MAXIMUM SPACING AND AT ALL P.I.'S.



SEDIMENT BARRIER AT INLET OR APPROVED EQUAL

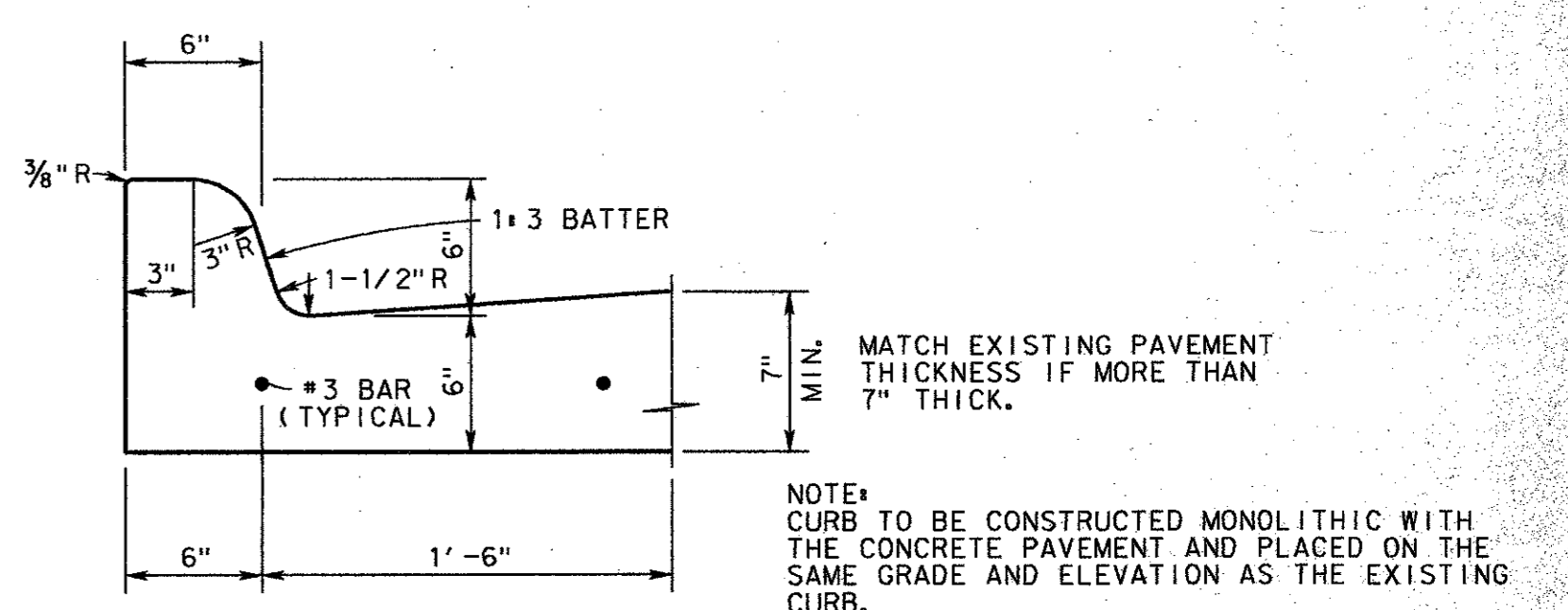


NO SCALE

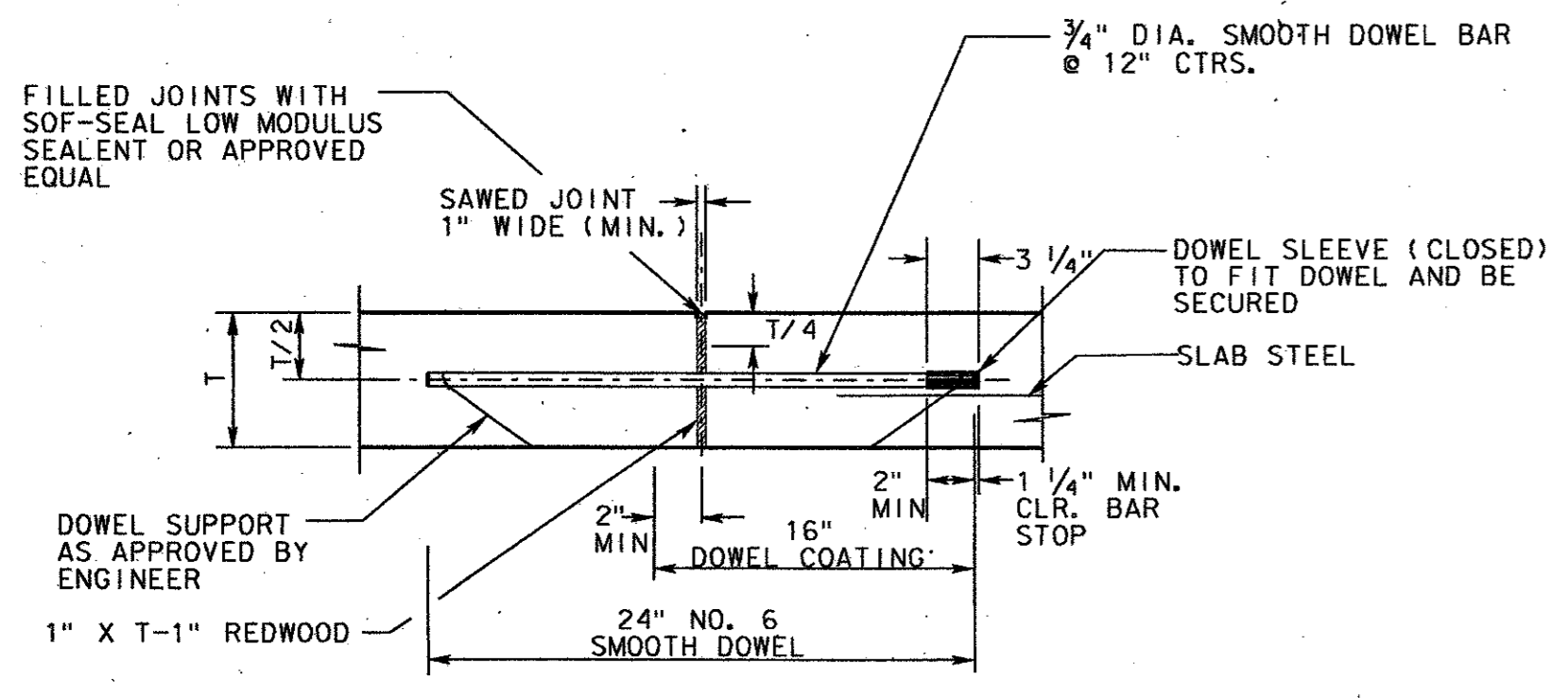


SILT FENCE DETAIL
(NOT TO SCALE)

NOTE:
1.) SILT FENCE FABRIC SHALL BE MIRAFI 100 X OR EQUAL.
2.) INSTALL SILT FENCES AND HAY BALES AT LOCATIONS DIRECTED BY OWNER.
3.) FENCE POSTS SHALL BE GALVANIZED STEEL AND MAY BE ROLLED, FORMED OR TUBULAR IN CROSS-SECTION. "T" POSTS MAY BE USED WHEN IN CONFORMANCE WITH SPECIFICATION.

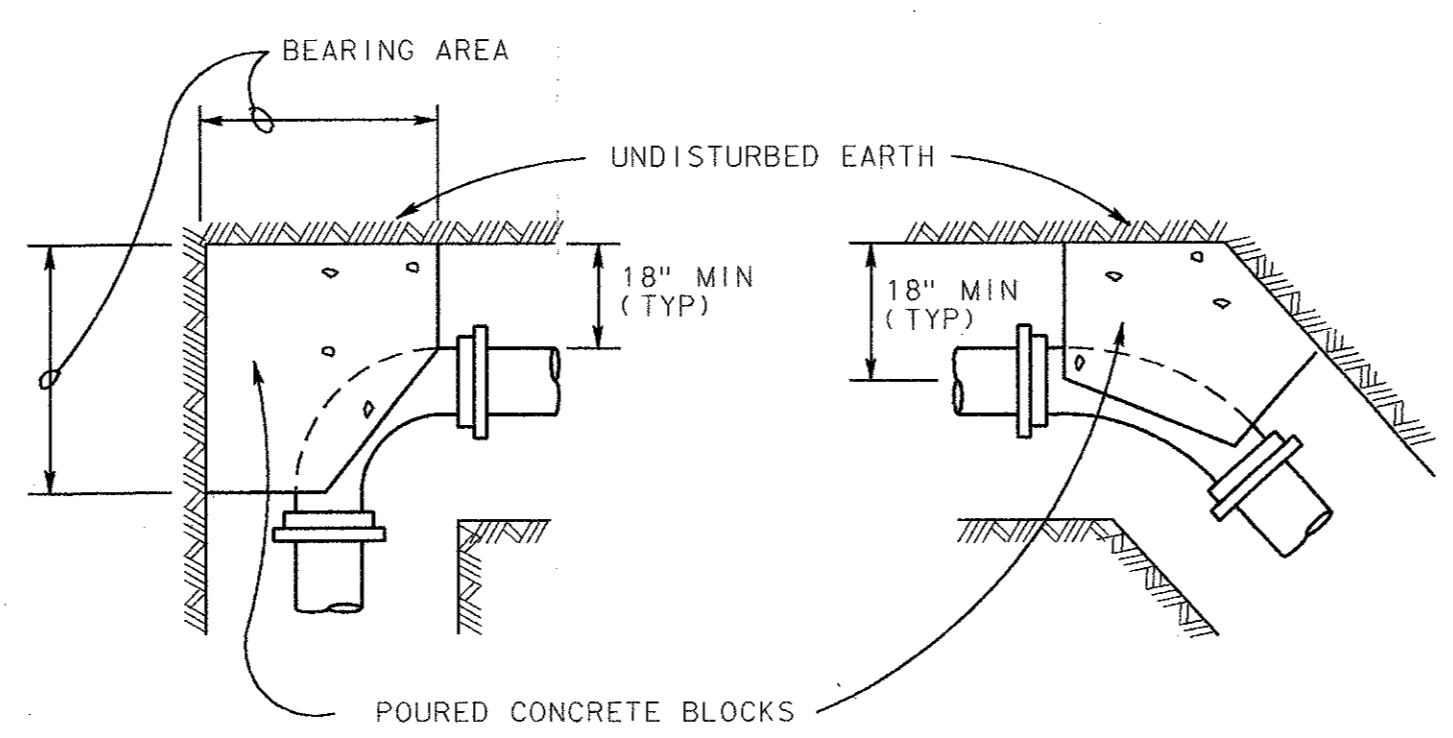


6" CONCRETE CURB



TRANSVERSE EXPANSION JOINT

NOTES:
1. DOWEL SPACER TO BE PLACED ON FIRST POURED SIDE OF DOWELS.
2. SPACER SHALL BE ALIGNED SUCH THAT DOWELS ARE PARALLEL TO EACH OTHER, AND PERPENDICULAR TO REDWOOD.

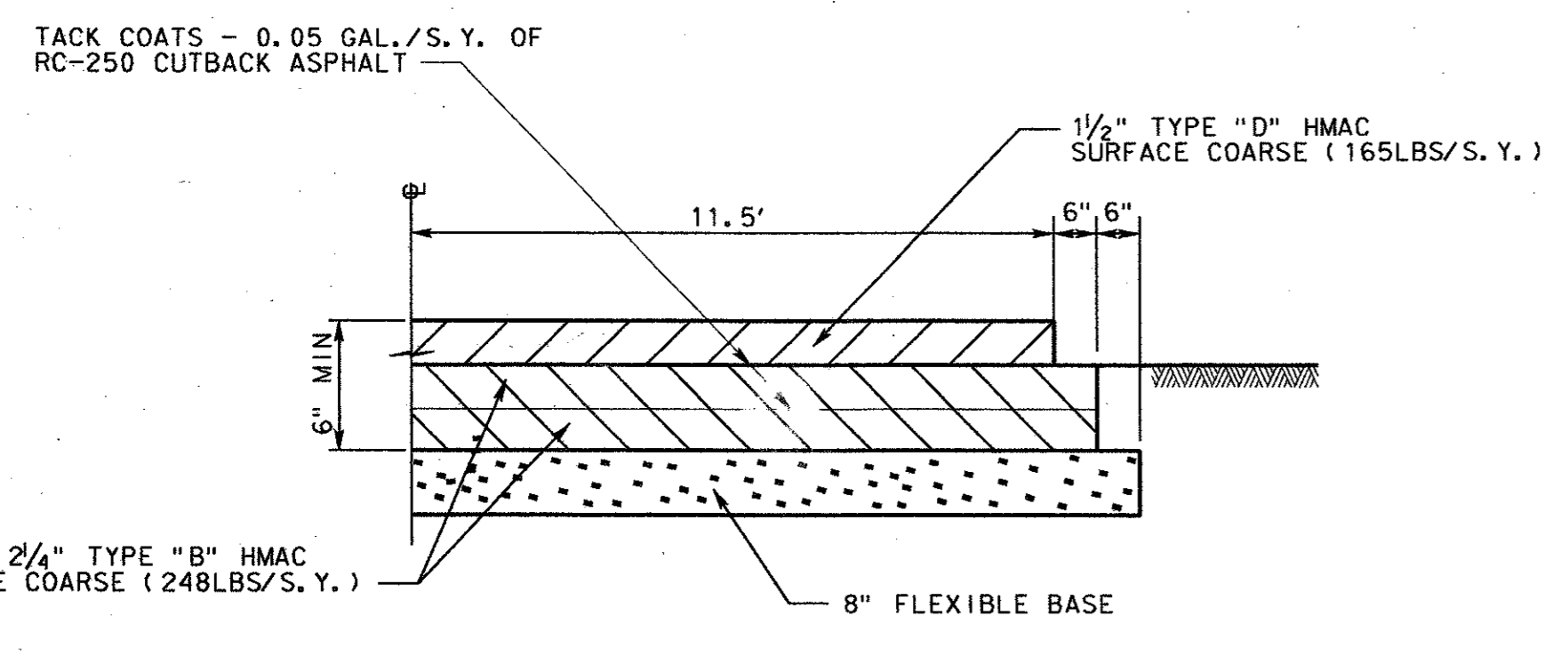


FITTING SIZES	BEARING AREA OF BLOCK IN SQ. FT.				
	TEE & END	90° BEND	45° BEND	22 1/2° BEND	11 1/4° BEND
6"	3.6	5.4	2.5	1.5	0.8
8"	6.3	8.9	4.8	2.5	1.3
10"	9.9	13.9	7.6	3.9	2.0
12"	14.2	20.0	10.9	5.6	2.8

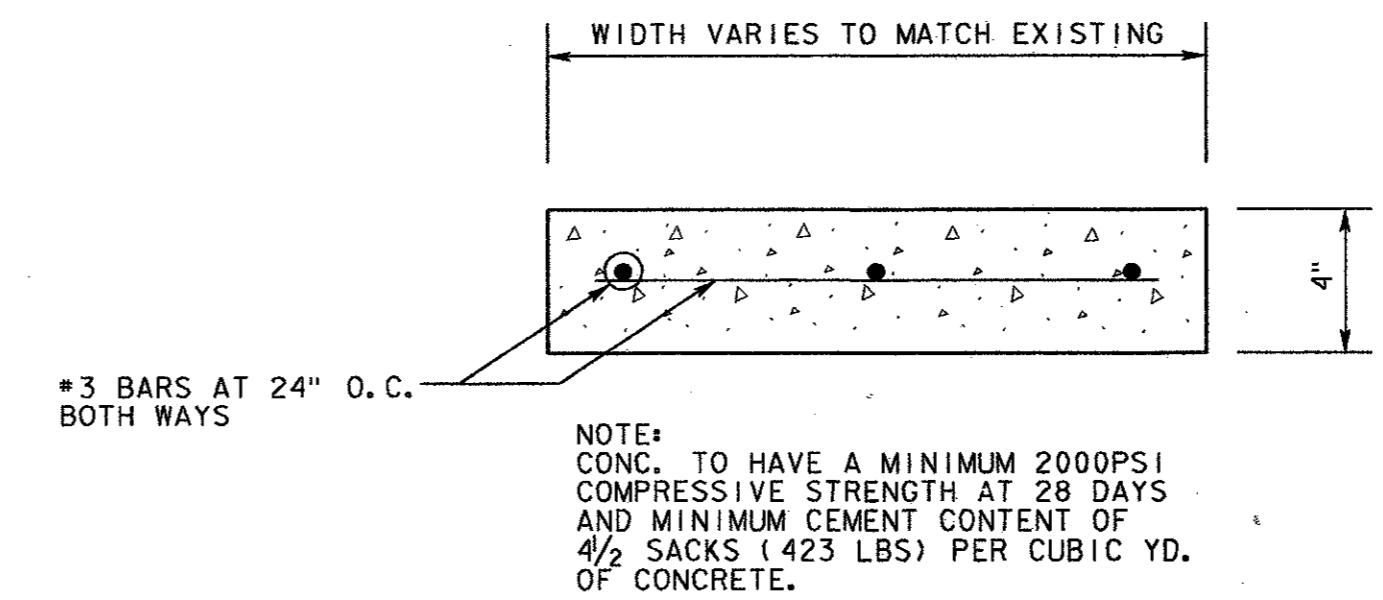
NOTE:
AREAS BASED ON PIPE BURST PRESSURE OF 250 PSI. SOIL BEARING PRESSURE MULTIPLIER

1000	2.0
1500	1.33
2000	1.0
3000	0.67

THRUST BLOCK DETAILS
NOT TO SCALE



6 INCH ASPHALT PAVEMENT DETAIL

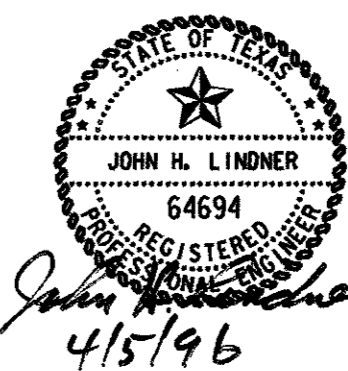


SIDEWALK REPLACEMENT DETAIL

NO.	DATE	REVISION	APPROV.
4			
3			
2			
1			

TOWN OF ADDISON, TEXAS
MIDWAY/BELTLINE SANITARY SEWER PHASE II
SANITARY SEWER DETAILS SHEET 2

Carter & Burgess
Consultants in Engineering, Architecture, Planning, and the Environment
CARTER & BURGESS, INC.
7500 EMBROOK DRIVE, SUITE 250
DALLAS, TX 75247-4961



Unit	Scale	1" = 2'	Date	04-05-96
Designed	J. Lindner	Checked	J. Lindner	Job No. 93327601D
Drawn	R. Howman	Approved	J. Lindner	Sheet 37 of 63