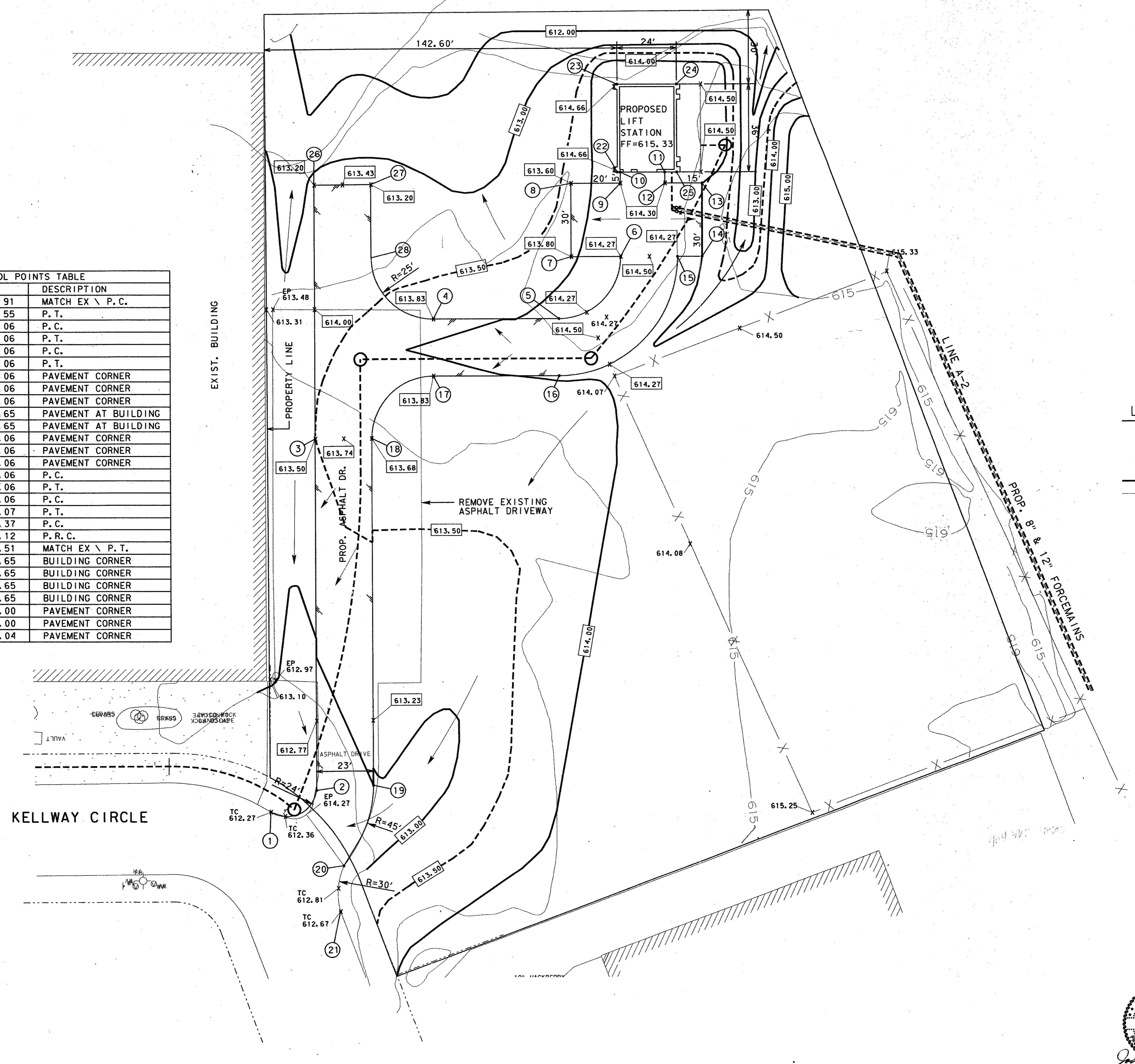


COORDINATE CONTROL POINTS TABLE			
NO.	N	E	DESCRIPTION
1	2202172.75	475582.91	MATCH EX \ P. C.
2	2202177.02	475592.55	P. T.
3	2202176.92	475735.06	P. C.
4	2202224.89	475783.06	P. T.
5	2202275.77	475783.06	P. C.
6	2202300.77	475808.06	P. T.
7	2202280.77	475808.06	PAVEMENT CORNER
8	2202280.77	475838.06	PAVEMENT CORNER
9	2202300.77	475838.06	PAVEMENT CORNER
10	2202300.77	475842.65	PAVEMENT AT BUILDING
11	2202318.77	475842.65	PAVEMENT AT BUILDING
12	2202318.77	475838.06	PAVEMENT CORNER
13	2202333.77	475838.06	PAVEMENT CORNER
14	2202333.77	475808.06	PAVEMENT CORNER
15	2202323.77	475808.06	P. C.
16	2202275.77	475760.06	P. T.
17	2202224.89	475760.06	P. C.
18	2202199.88	475735.07	P. T.
19	2202199.98	475594.37	P. C.
20	2202187.91	475562.12	P. R. C.
21	2202186.45	475543.51	MATCH EX \ P. T.
22	2202299.61	475842.65	BUILDING CORNER
23	2202299.61	475878.65	BUILDING CORNER
24	2202323.61	475878.65	BUILDING CORNER
25	2202323.61	475842.65	BUILDING CORNER
26	2202176.85	475838.00	PAVEMENT CORNER
27	2202199.81	475838.00	PAVEMENT CORNER
28	2202199.83	475808.04	PAVEMENT CORNER



**LEGEND**

- 6 COORDINATE POINT NUMBER
- 614.08 EXISTING ELEVATION
- 614.27 PROPOSED ELEVATION
- PROPOSED CONTOUR
- EXISTING CONTOUR

**PRELIMINARY - FOR REVIEW ONLY**  
 These documents are for Design Review and not intended for Construction, Bidding, or Permit Purposes. They were prepared by, or under the supervision of:

JOHN LINDNER 64694 01-02-96  
 Type or Print Name PE Date

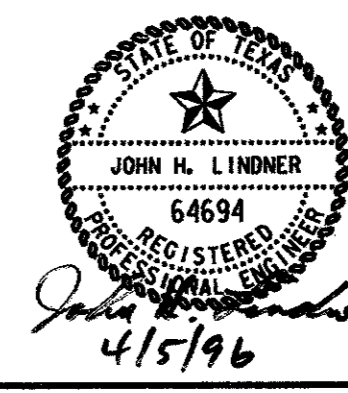
NO.	DATE	REVISION	APPROV.

**TOWN OF ADDISON, TEXAS**

**MIDWAY/BELTLINE SANITARY SEWER  
 PHASE II**

**LIFT STATION  
 SITE & GRADING PLAN**

**Carter Burgess**  
 Consultants in Engineering, Architecture,  
 Planning and the Environment  
**CARTER & BURGESS, INC.**  
 7950 ELMBROOK DRIVE, SUITE 250  
 DALLAS, TX 75247-4961



Unit	Scale	Date	
	1" = 20'	04-05-96	
Designed	J. Lindner	Checked	J. Lindner
Drawn	R. Howman	Approved	J. Lindner
		Job No.	93327601D
		Sheet	39 of 63