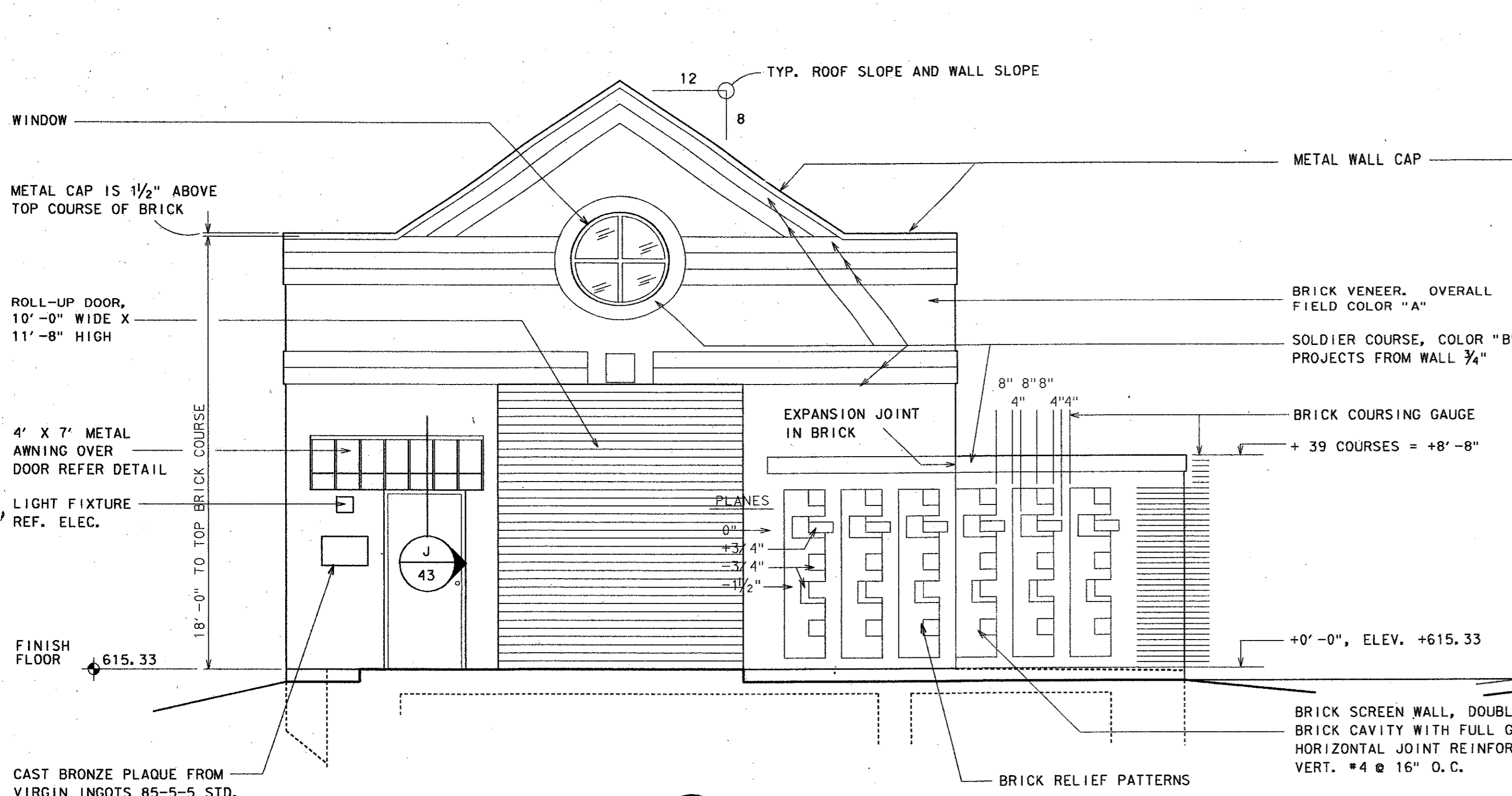


DESIGNER: R. WRIGHT  
 ARCHITECT: R. WRIGHT  
 ENGINEER: J. LINDNER  
 DATE: 4/15/96  
 SHEET: 42 OF 63



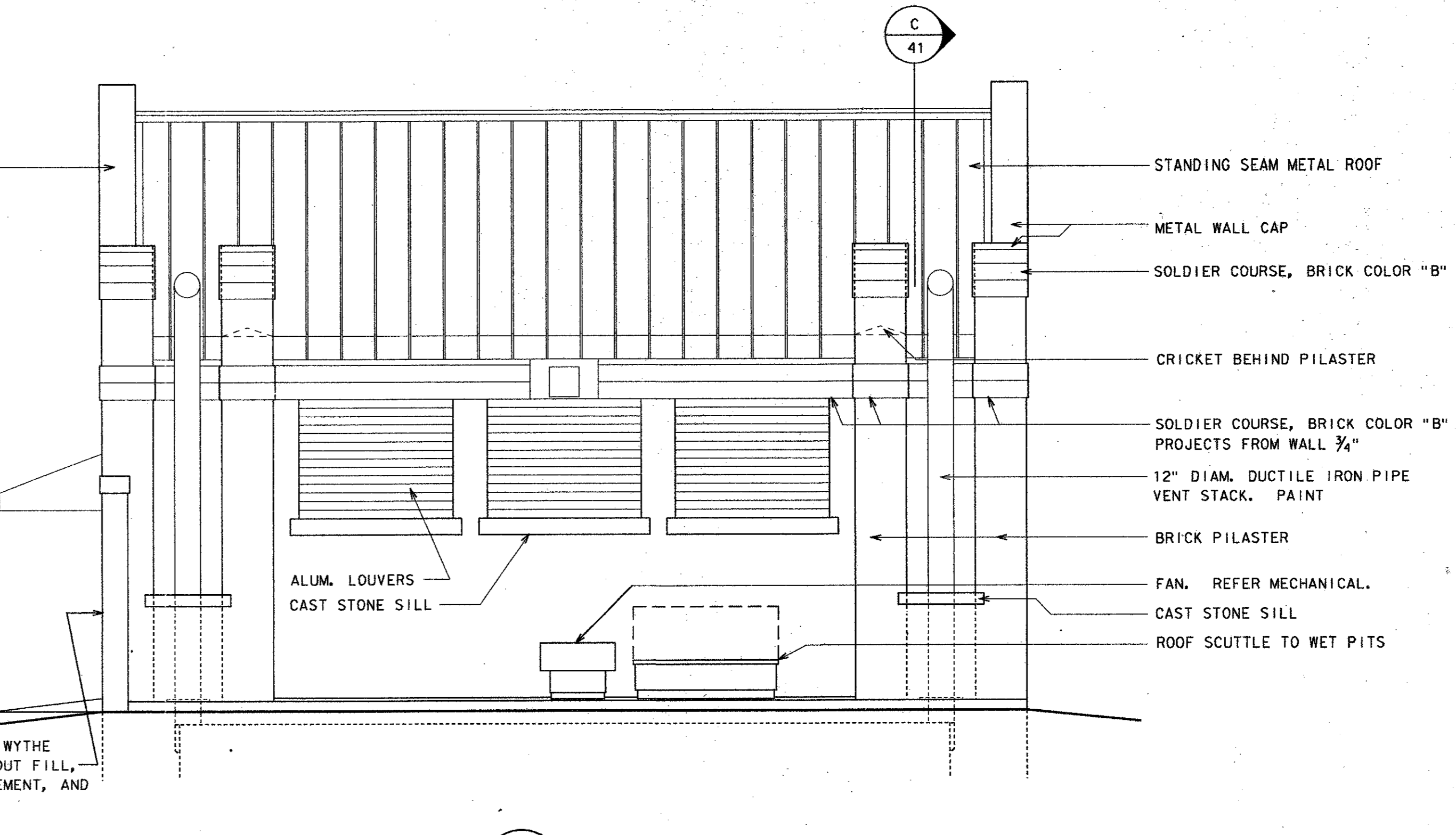
**SOUTH ELEVATION** (A) 42  
1/4" = 1'-0"

CAST BRONZE PLAQUE FROM VIRGIN INGOTS 85-5-5 STD. U.S. BRONZE ALLOY PROJECTED BEVEL BORDER. RAISED SATIN FINISH LETTERS ON STIPPLE TEXTURE BACKGROUND, OXIDIZED. MOUNT FLUSH TO BRICK W/ CONCEALED FASTENERS. 2 COATS CLEAR ACRYLIC LACQUER. BY SOUTH WELL CO.

NUCORE BY KAWNEER, 62055 1 3/4" x 5 3/8" ALUMINUM FRAME, 1/4" CLEAR TEMPERED GLASS.

SOLDIER COURSE, COLOR "B"  
 BRICK SCREEN WALL  
 FAN BEYOND. REFER MECHANICAL  
 ROOF SCUTTLE TO WET PITS  
 GRADE

**NORTH ELEVATION** (C) 42  
1/4" = 1'-0"

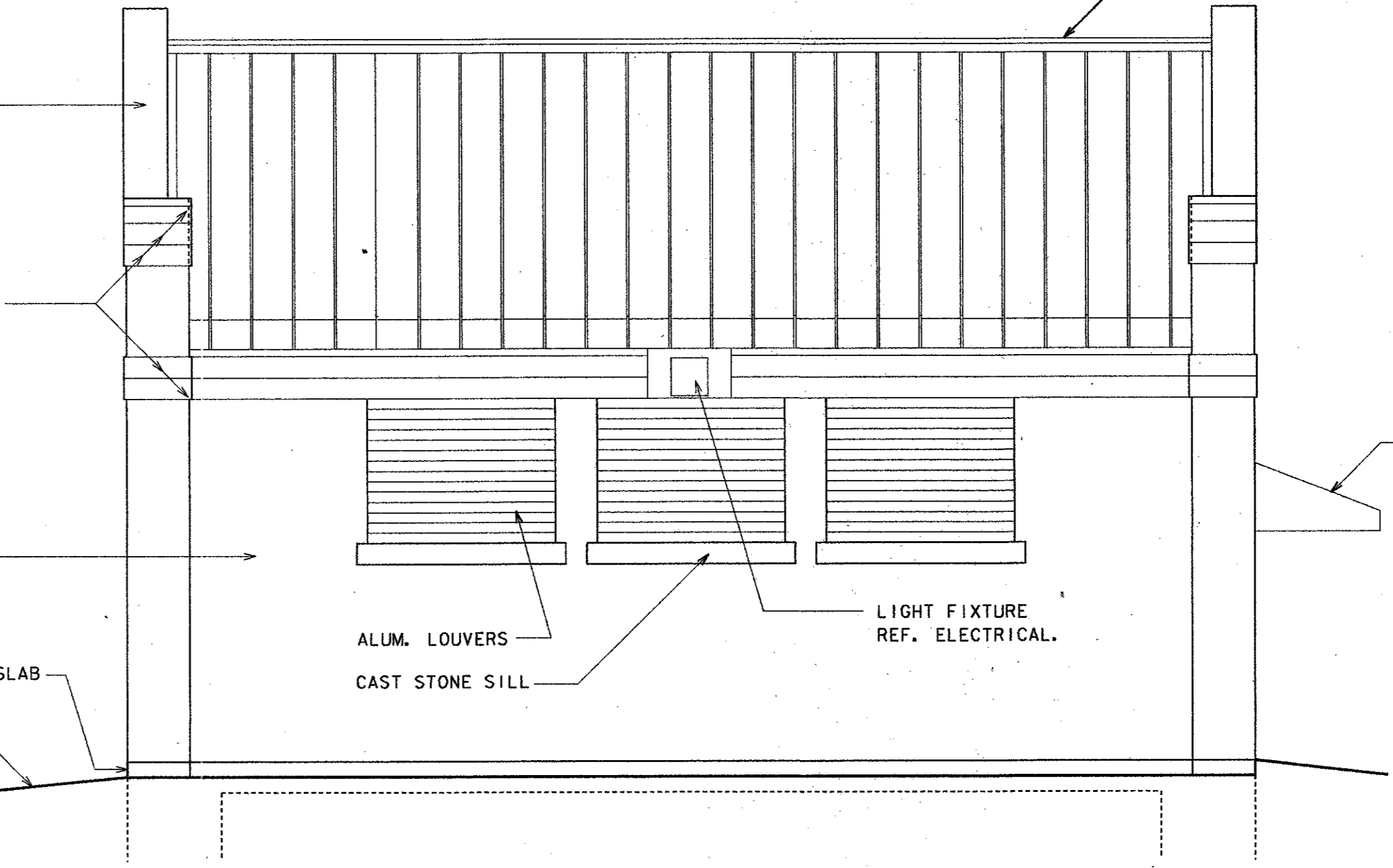


**EAST ELEVATION** (B) 42  
1/4" = 1'-0"

BRICK SCREEN WALL, DOUBLE WYTHE BRICK CAVITY WITH FULL GROUT FILL, HORIZONTAL JOINT REINFORCEMENT, AND VERT. #4 @ 16" O.C.  
 BRICK RELIEF PATTERNS

ALUM. LOUVERS  
 CAST STONE SILL

STANDING SEAM METAL ROOF  
 METAL WALL CAP  
 SOLDIER COURSE, BRICK COLOR "B"  
 CRICKET BEHIND PILASTER  
 SOLDIER COURSE, BRICK COLOR "B" PROJECTS FROM WALL 3/4"  
 12" DIAM. DUCTILE IRON PIPE VENT STACK. PAINT  
 BRICK PILASTER  
 FAN. REFER MECHANICAL.  
 CAST STONE SILL  
 ROOF SCUTTLE TO WET PITS



**WEST ELEVATION** (D) 42  
1/4" = 1'-0"

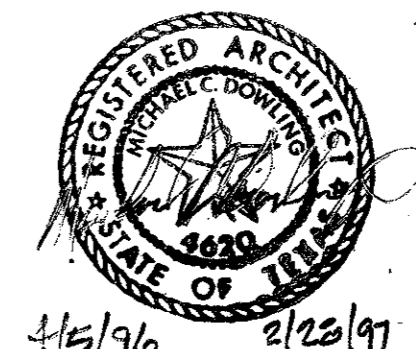
METAL WALL CAP  
 SOLDIER COURSE, COLOR "B", PROJECTS FROM WALL 3/4"  
 LIGHT FIXTURE REF. ELECTRICAL.  
 BRICK VENEER OVERALL FIELD COLOR "A"  
 EXPOSED EDGE OF CONCRETE SLAB  
 GRADE

ALUM. LOUVERS  
 CAST STONE SILL  
 LIGHT FIXTURE REF. ELECTRICAL

EXPANDABLE RIDGE, BY ROOFING MANUFACTURER

METAL AWNING, REFER DETAIL J/43

**GENERAL NOTES:**  
 1. CAST STONE TO BE 6,500 PSI W/ LESS THAN 6% WATER ABSORPTION. WHITE CEMENT. MANUFACTURER TO BE MEMBER OF CAST STONE INSTITUTE.



4			
3			
2			
1			
NO.	DATE	REVISION	APPROV.
<b>TOWN OF ADDISON, TEXAS</b>			
<b>MIDWAY/BELTLINE SANITARY SEWER PHASE II</b>			
<b>LIFT STATION - ARCHITECTURAL EXTERIOR ELEVATIONS</b>			
<b>Carter &amp; Burgess</b> <small>Consultants in Engineering, Architecture, Planning and the Environment</small> <b>CARTER &amp; BURGESS, INC.</b> <small>7950 ELMBROOK DRIVE, SUITE 250 DALLAS, TX 75247-4960</small>			
Unit	Scale	Date	04-05-96
Designed	R. WRIGHT	Checked	R. WRIGHT
Drawn	R. WRIGHT	Approved	J. Lindner
		Job No.	93327601D
		Sheet	42 of 63