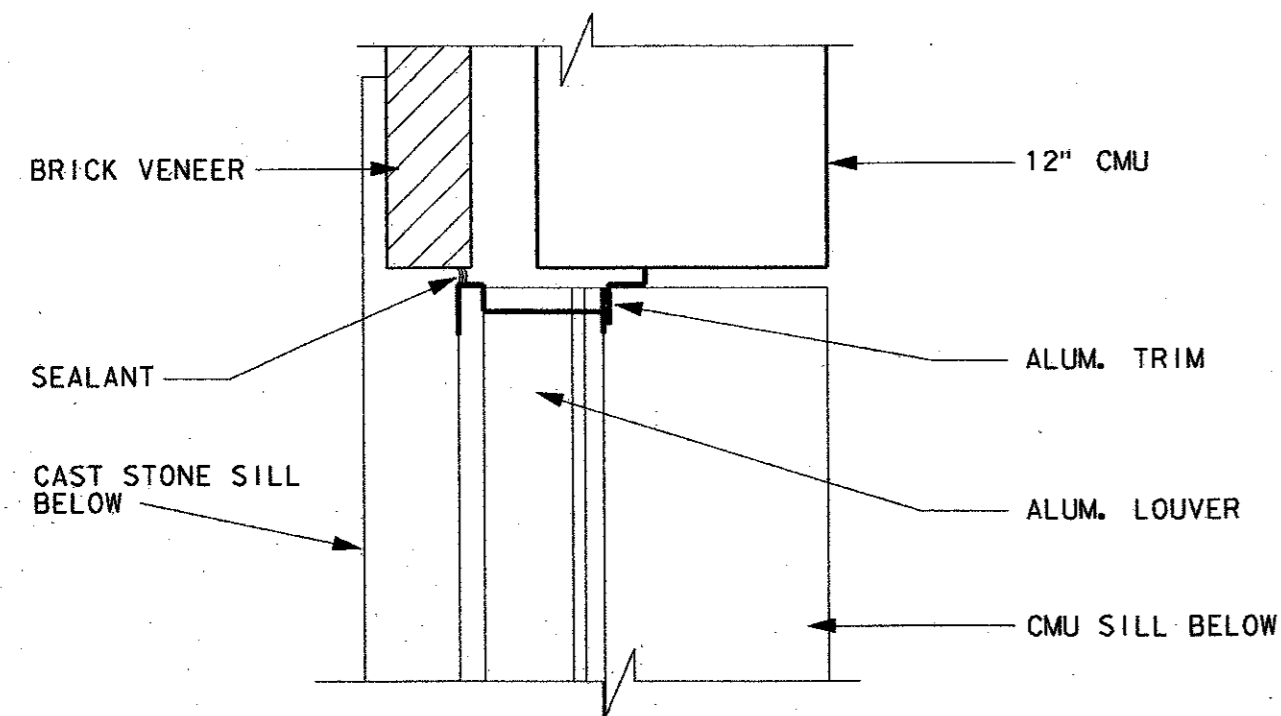
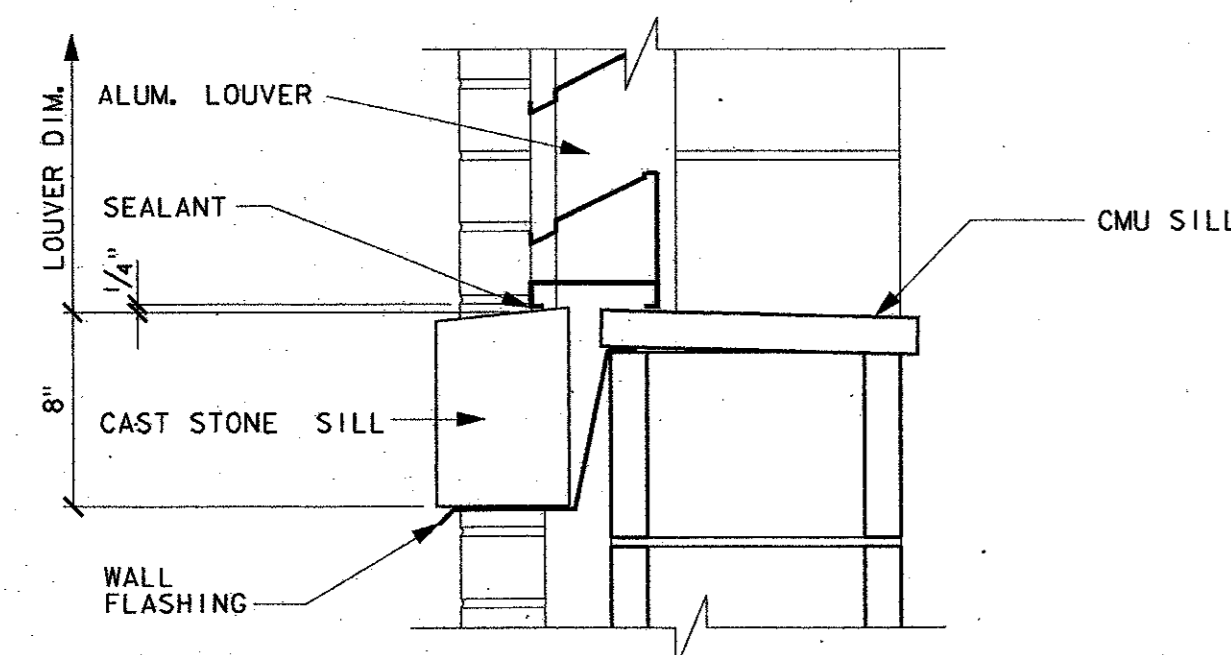


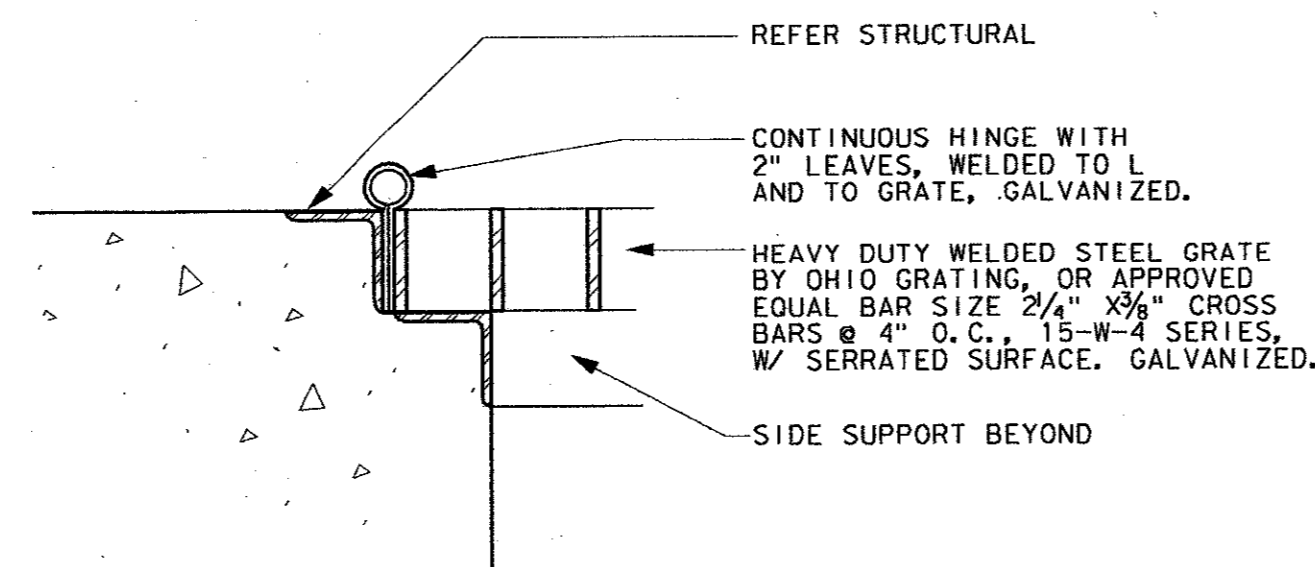
LOUVER HEAD (A) 43  
 1/2" = 1'-0"



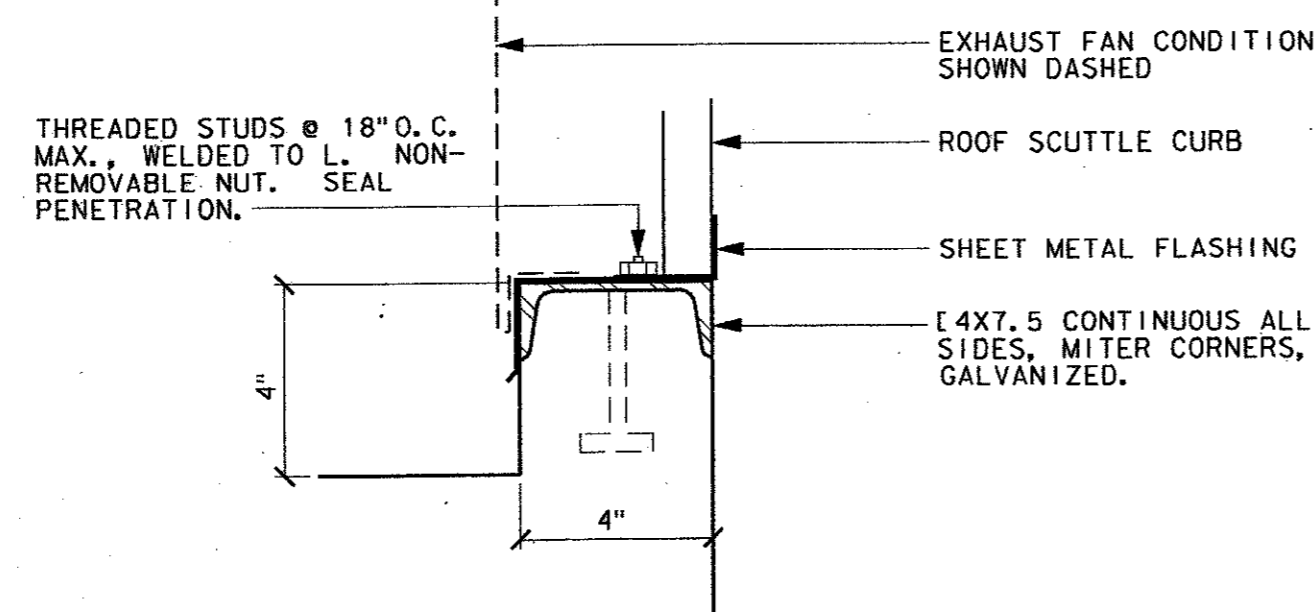
LOUVER JAMB (B) 43  
 1/2" = 1'-0"



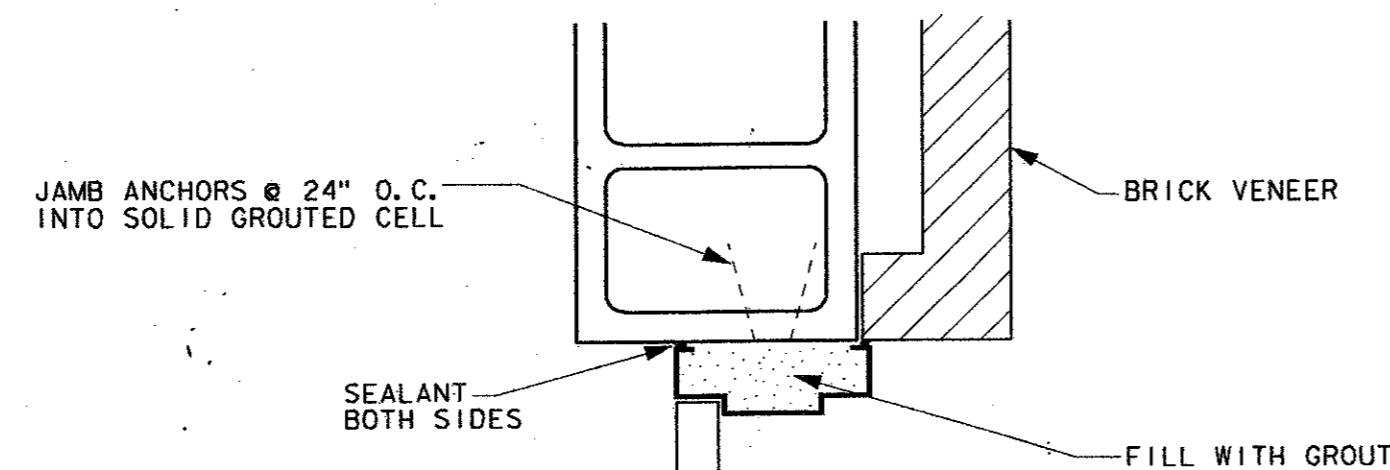
LOUVER SILL (C) 43  
 1/2" = 1'-0"



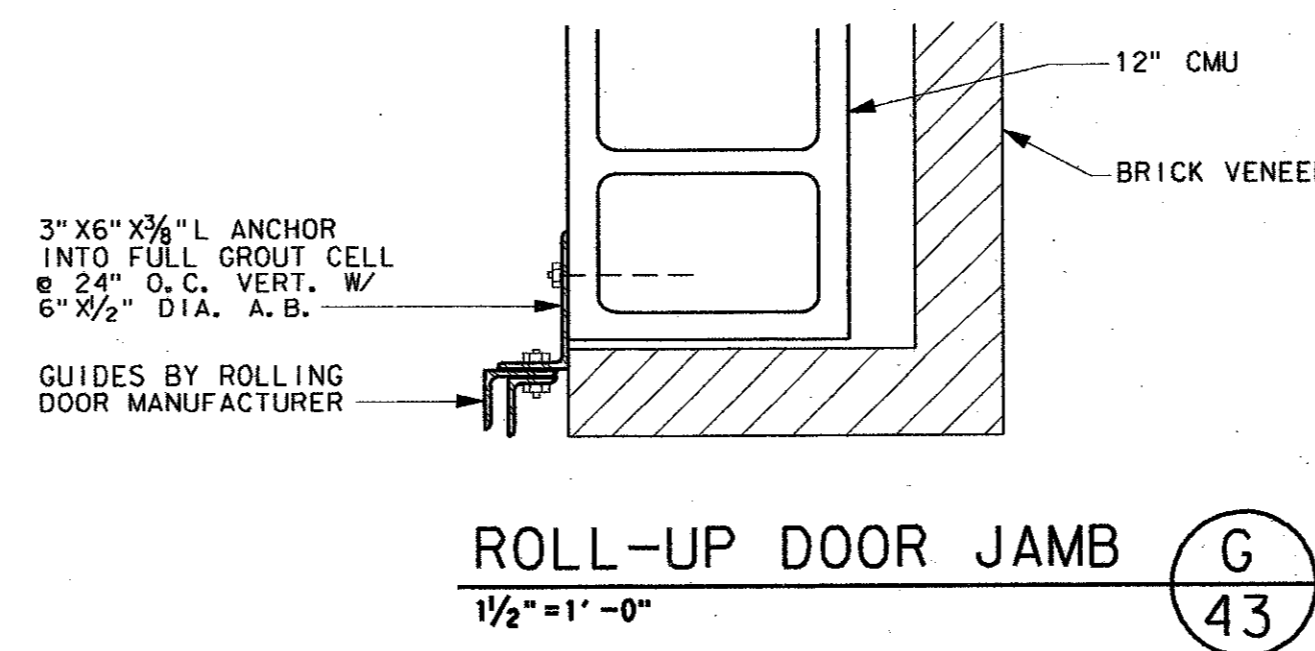
SECTION (D) 43  
 3" = 1'-0"



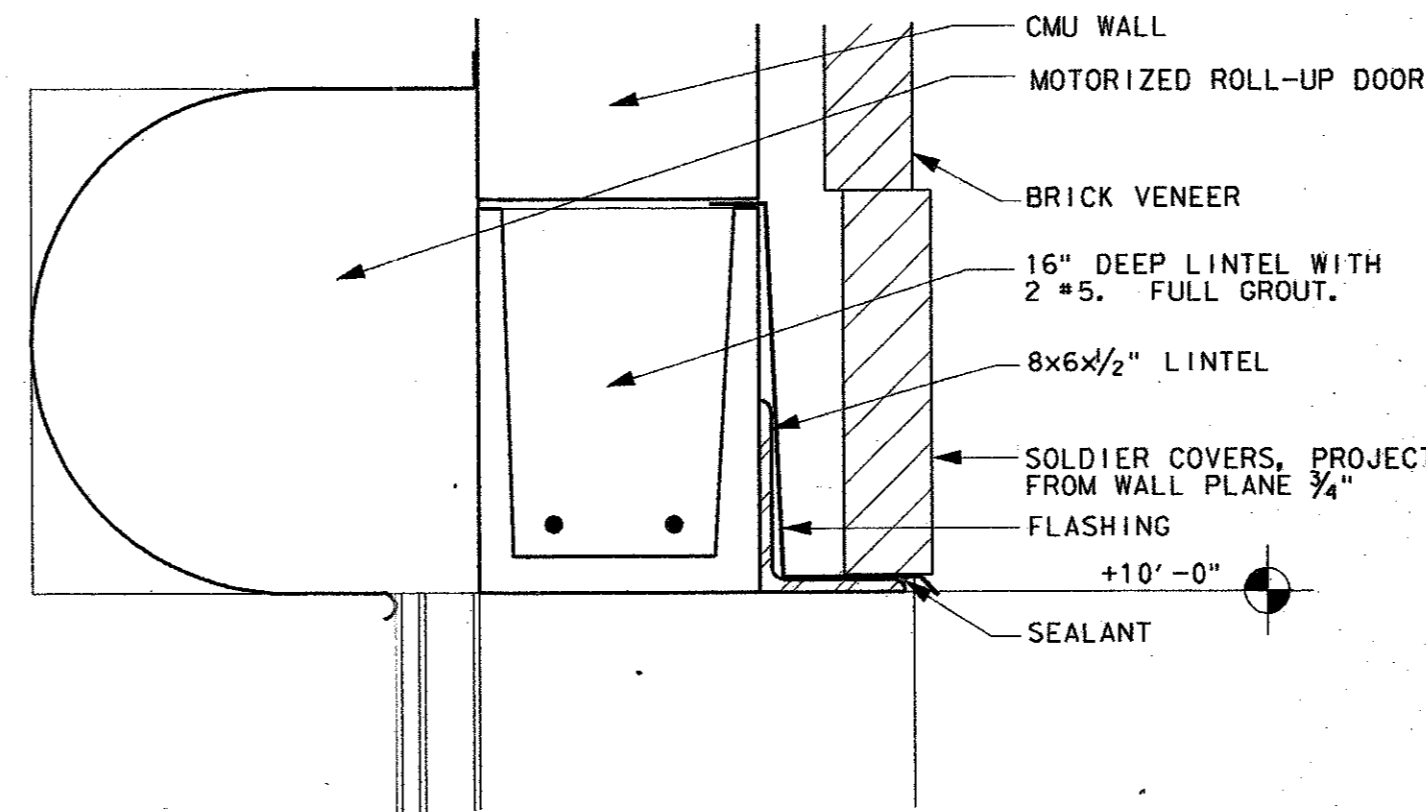
TYPICAL EQUIPMENT CURB (E) 43  
 3" = 1'-0"



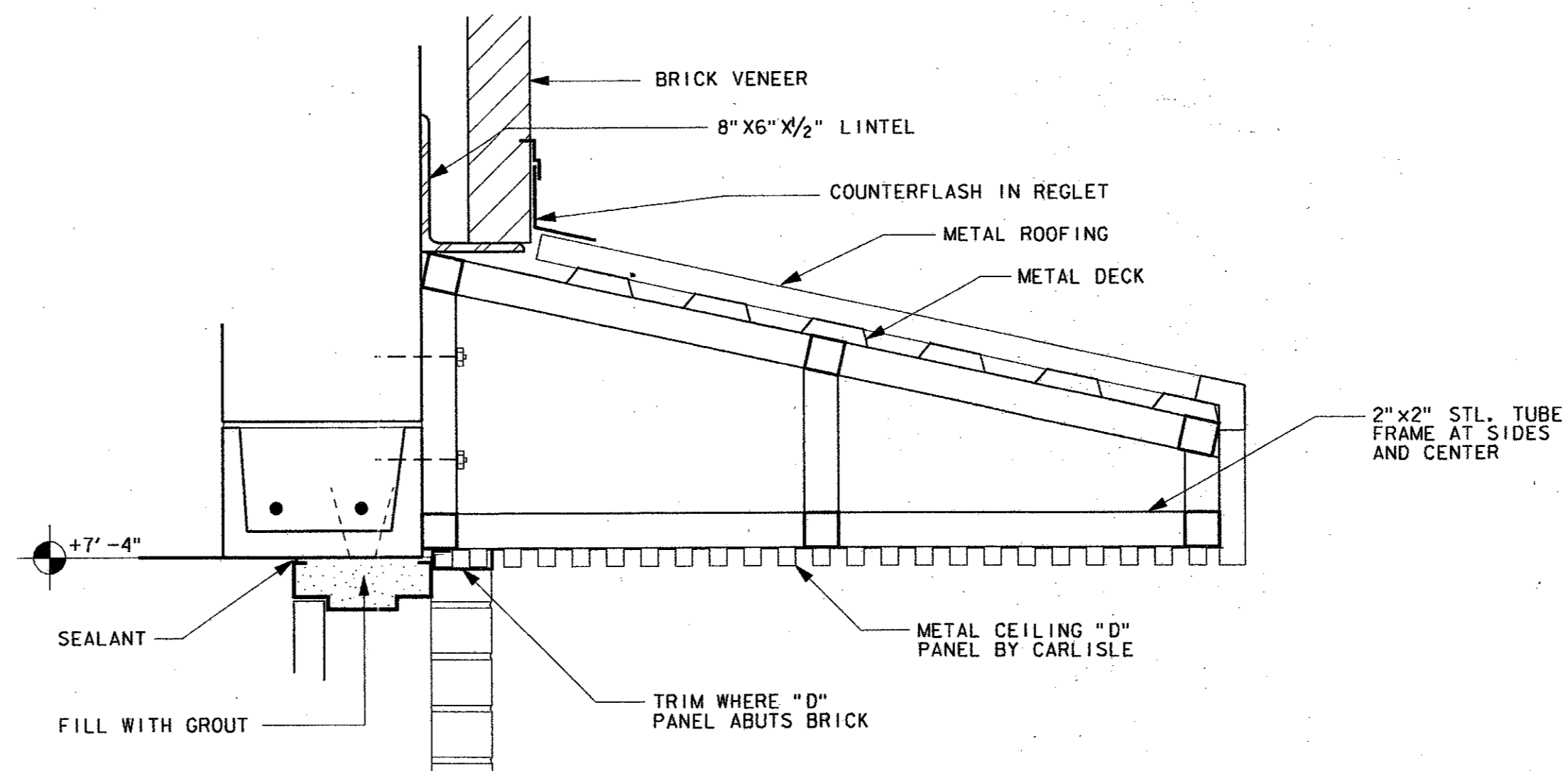
HM DOOR JAMB (F) 43  
 1/2" = 1'-0"



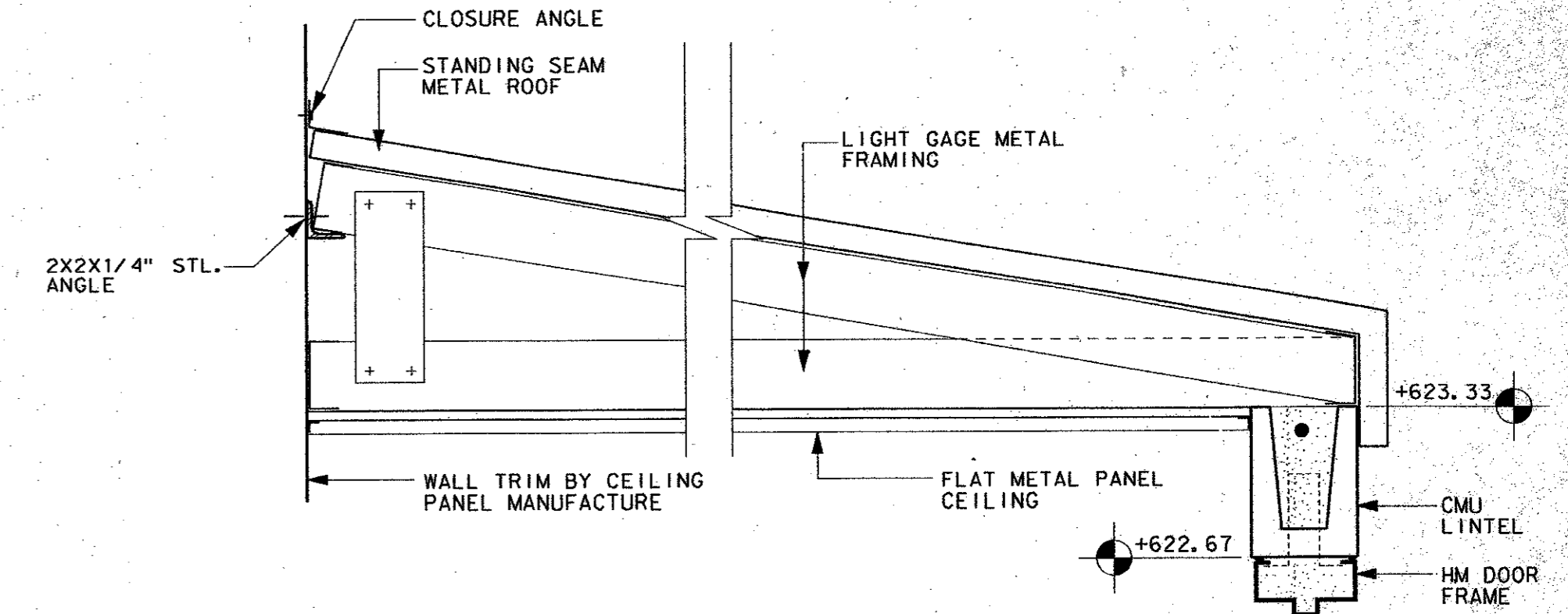
ROLL-UP DOOR JAMB (G) 43  
 1/2" = 1'-0"



ROLL-UP DOOR HEAD (H) 43  
 1/2" = 1'-0"



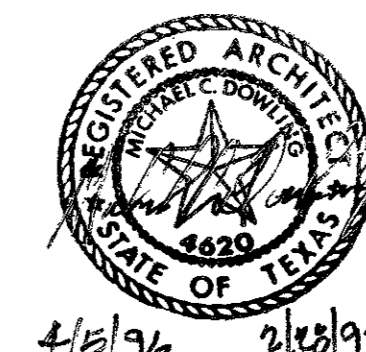
HM DOOR HEAD (J) 43  
 1/2" = 1'-0"



ROOF SECTION (K) 43  
 1/2" = 1'-0"

4			
3			
2			
1			
NO.	DATE	REVISION	APPROV.

TOWN OF ADDISON, TEXAS  
 MIDWAY/BELTLINE SANITARY SEWER  
 PHASE II  
 LIFT STATION -  
 ARCHITECTURAL DETAILS - SHEET 1



**Carter & Burgess**

Consultants in Engineering, Architecture,  
 Planning and the Environment  
 CARTER & BURGESS, INC.  
 7950 ELMBROOK DRIVE, SUITE 250  
 DALLAS, TX 75247-4963

Unit	Scale	Date	04-05-96
Designed	R. WRIGHT	Checked	R. WRIGHT
Drawn	R. WRIGHT	Approved	J. Lindner
Job No.	93327601D	Sheet	43 of 63