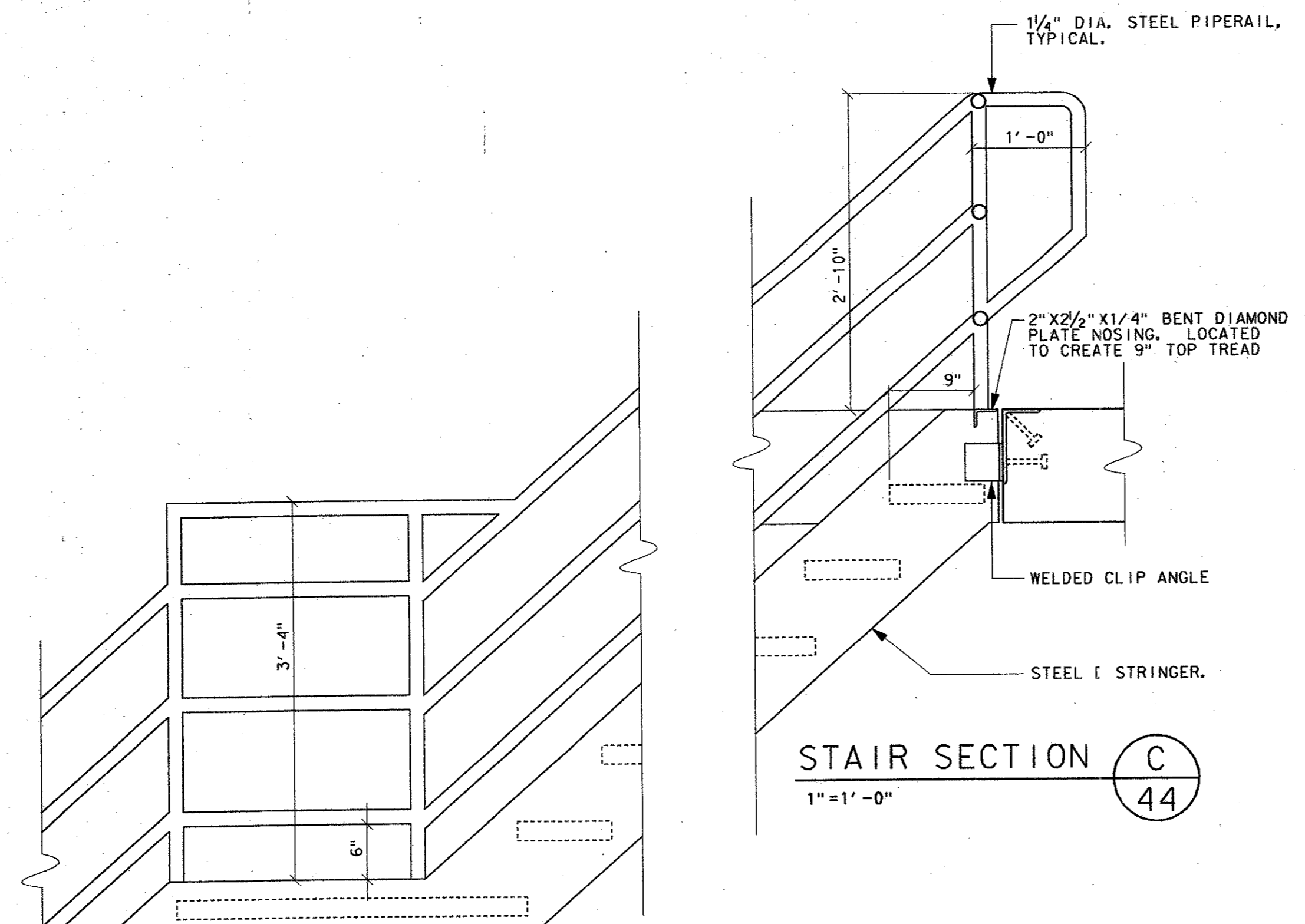
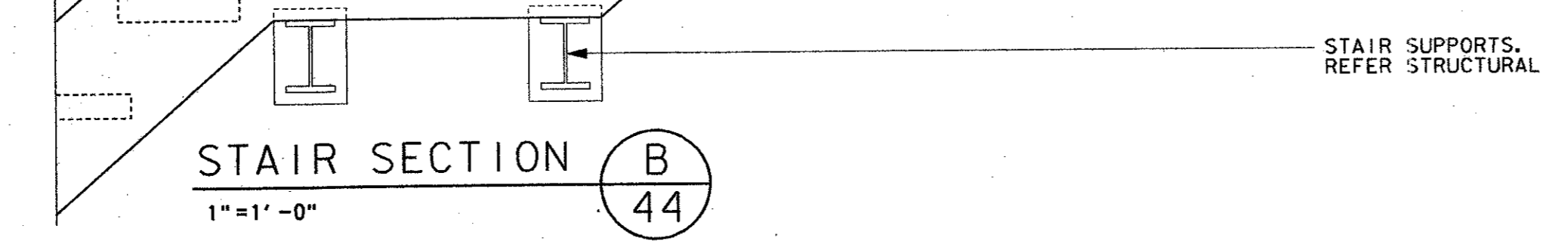


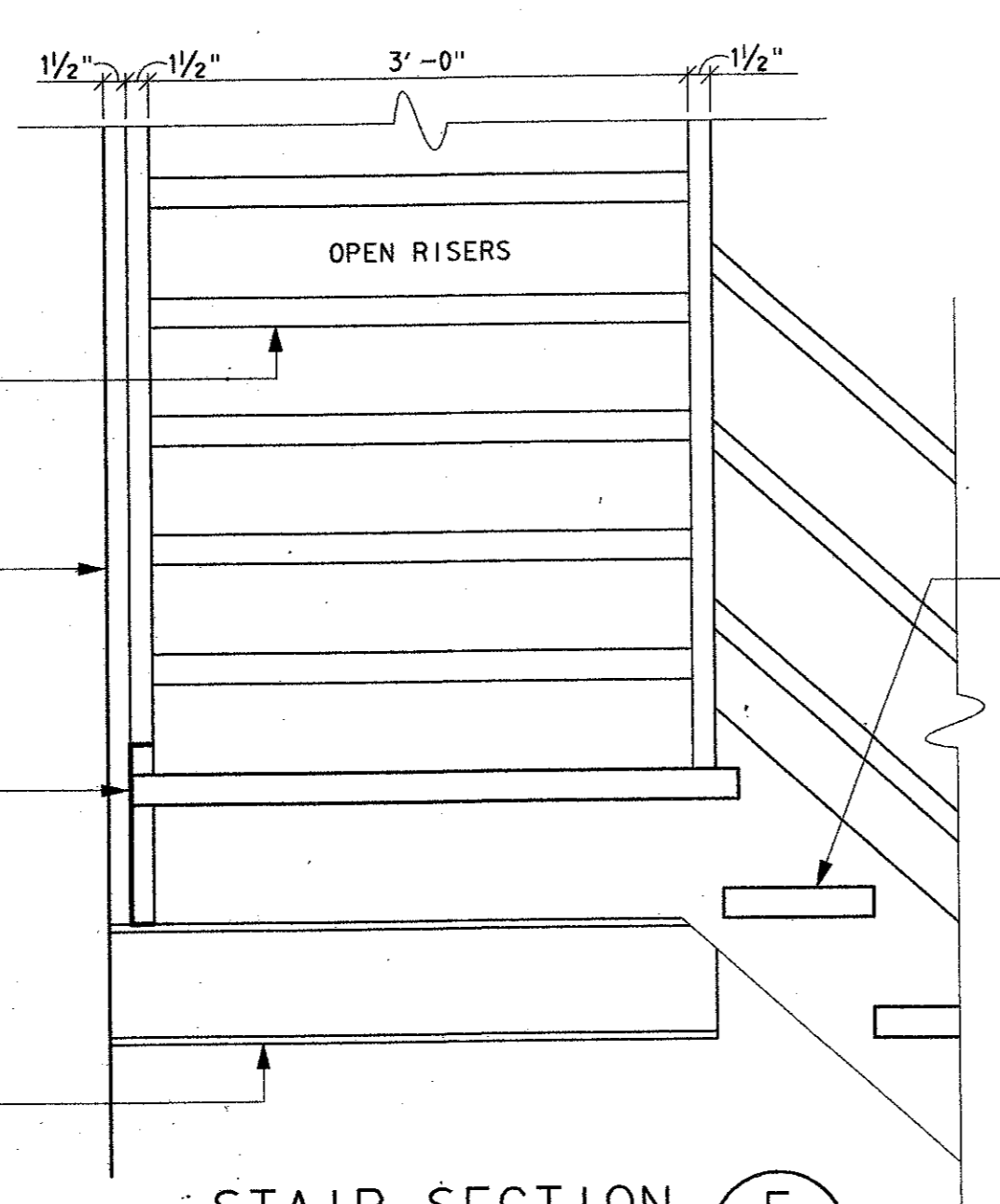
GUARDRAIL AT STAIR OPENING  
1"=1'-0" (A) 44



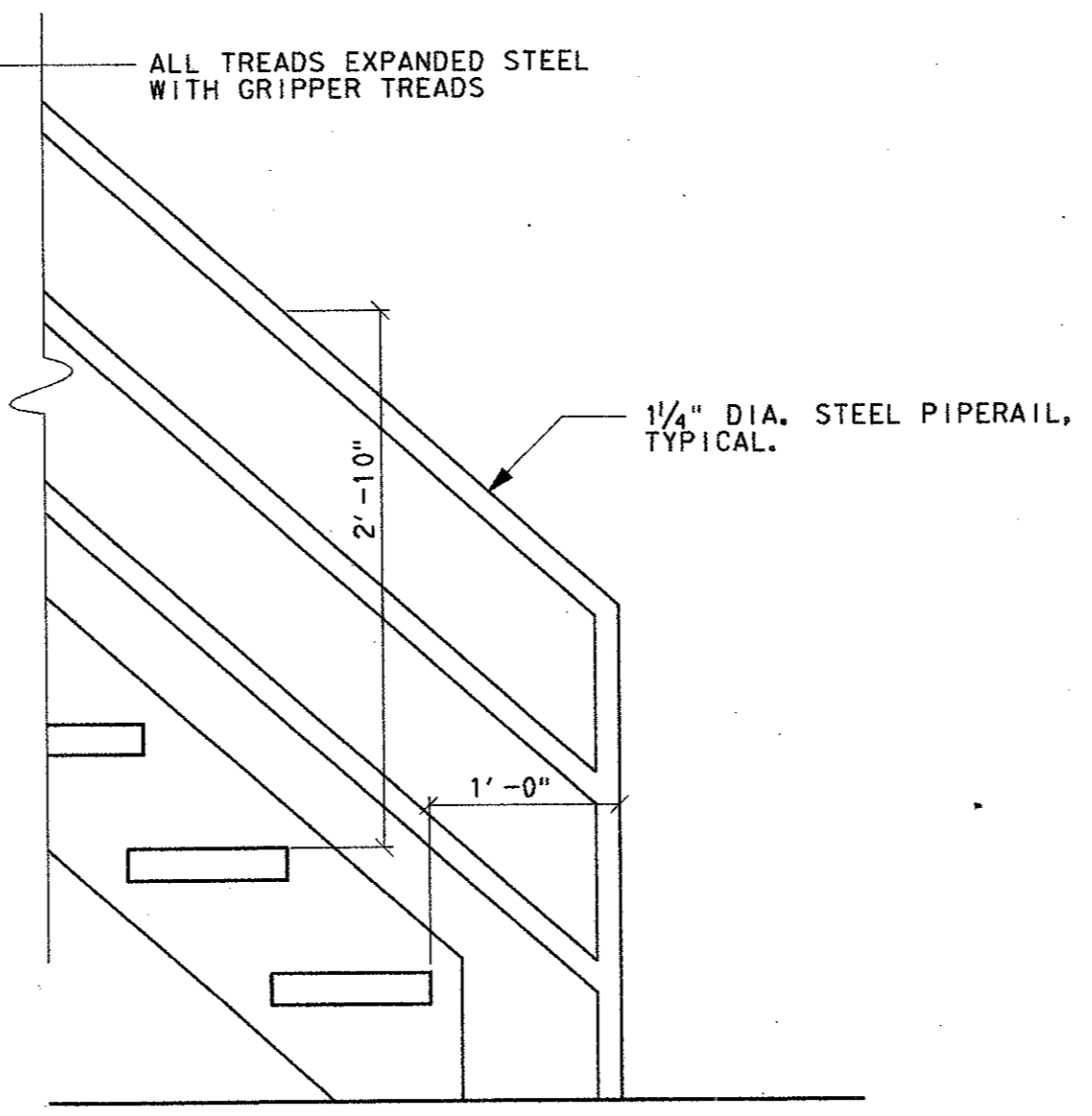
STAIR SECTION C  
1"=1'-0" (C) 44



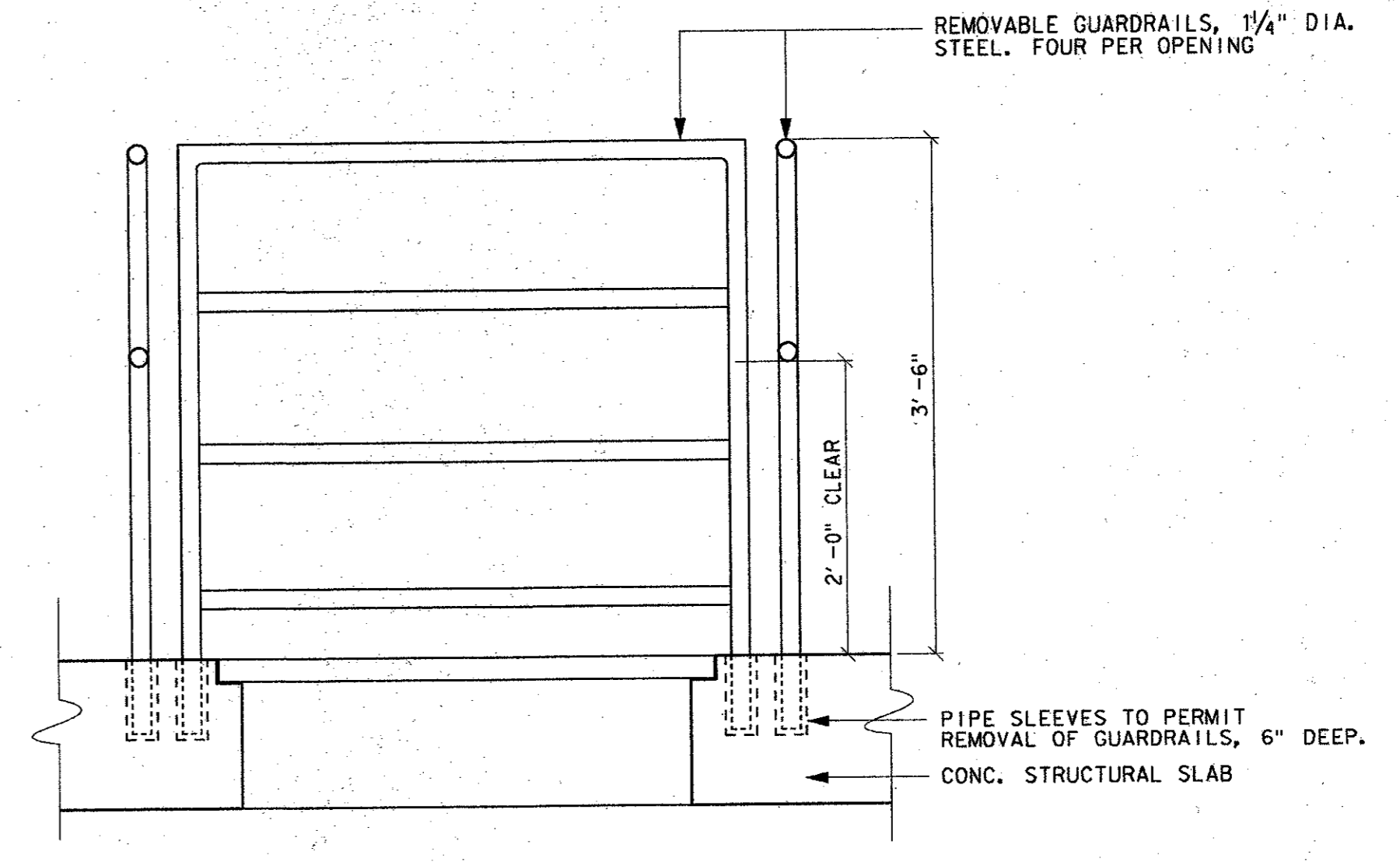
STAIR SECTION B  
1"=1'-0" (B) 44



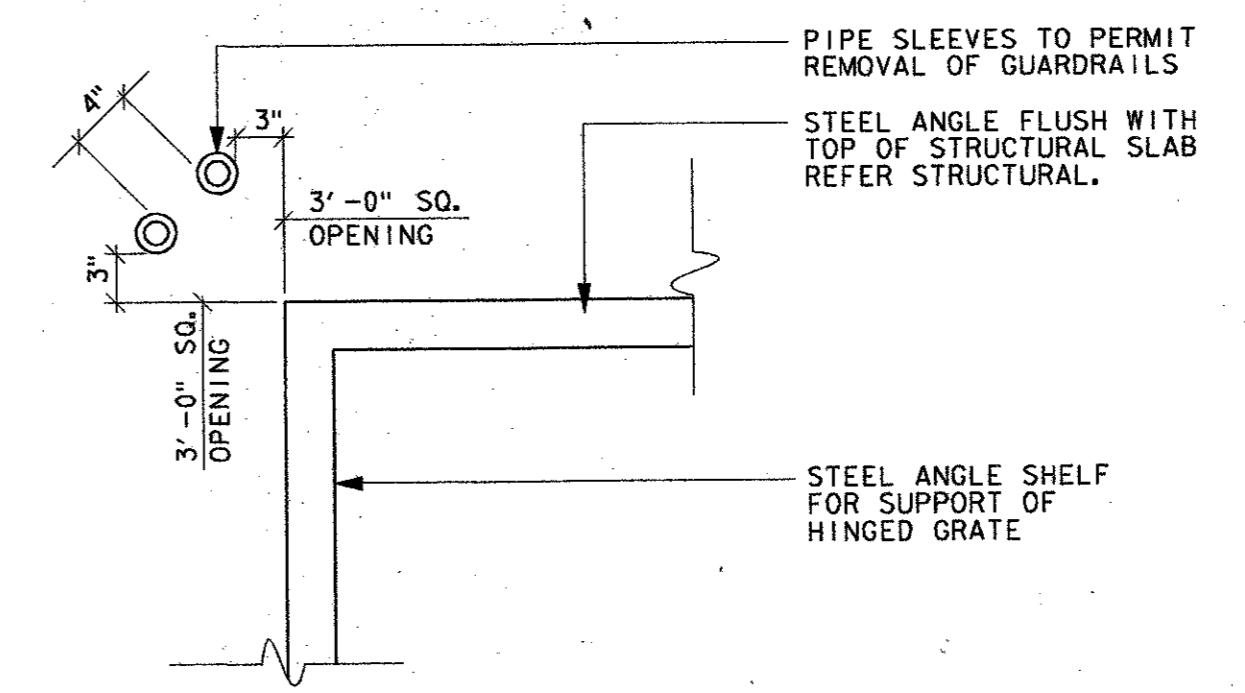
STAIR SECTION E  
1"=1'-0" (E) 44




STAIR SECTION G  
1"=1'-0" (G) 44



GUARDRAIL AT ACCESS HOLE  
1"=1'-0" (D) 44



PLAN DETAIL AT ACCESS HOLE  
1"=1'-0" (F) 44

4			
3			
2			
1			
NO.	DATE	REVISION	APPROV.
TOWN OF ADDISON, TEXAS			
MIDWAY/BELTLINE SANITARY SEWER PHASE II			
LIFT STATION - ARCHITECTURAL DETAILS - SHEET 2			
 <b>Carter &amp; Burgess</b> <small>Consultants in Engineering, Architecture, Planning and the Environment</small> <b>CARTER &amp; BURGESS, INC.</b> <small>7560 ELMBROOK DRIVE, SUITE 250 DALLAS, TX 75247-4961</small>			
Unit	Soiler	Date	04-05-96
Designed	R. WRIGHT	Checked	R. WRIGHT
Drawn	R. WRIGHT	Approved	J. Lindner
		Job No.	93327601D
		Sheet	44 of 63

