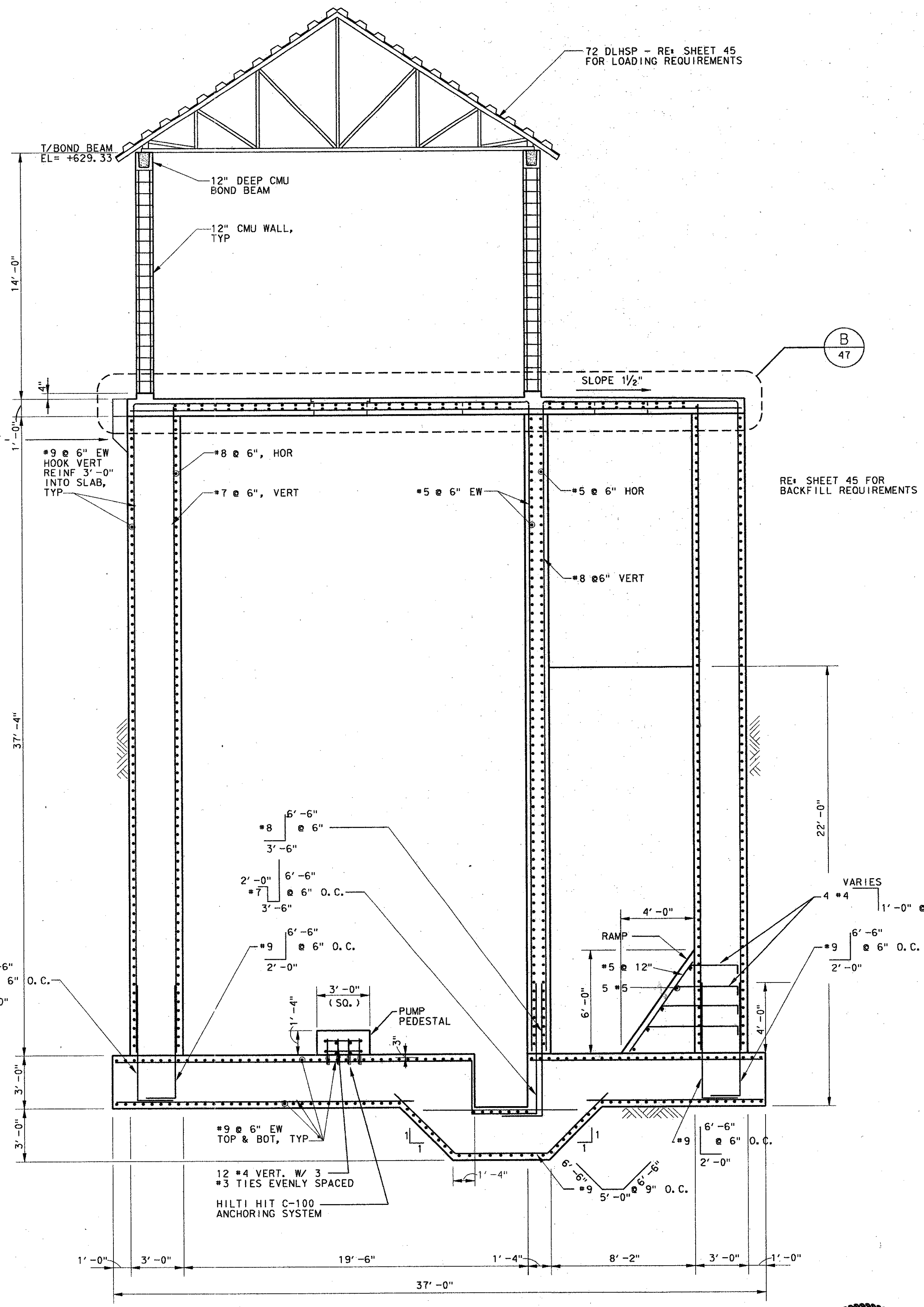


SECTION A  
1/4" = 1'-0"

NOTE: BRACE WALLS CONTINUOUSLY AT TOP DURING BACKFILLING OPERATION. BRACING TO REMAIN IN PLACE UNTIL TOP SLAB HAS REACHED 75% OF ITS DESIGN STRENGTH.



SECTION B  
1/4" = 1'-0"

4			
3			
2			
1			
NO.	DATE	REVISION	APPROV.
TOWN OF ADDISON, TEXAS			
MIDWAY/BELTLINE SANITARY SEWER PHASE II			
LIFT STATION STRUCTURAL BUILDING SECTIONS			
<b>Carter &amp; Burgess</b> <small>Consultants in Engineering, Architecture, Planning and the Environment</small> <b>CARTER &amp; BURGESS, INC.</b> <small>7950 ELAMWOOD DRIVE, SUITE 250 DALLAS, TX 75247-4961</small>			
Unit:	Scale:	Date:	04-05-96
Designed:	K. Houghton	Checked:	K. Houghton
Drawn:	C. Sammons	Approved:	J. Lindner
Job No.:	93327601D	Sheet:	46 of 63

415196