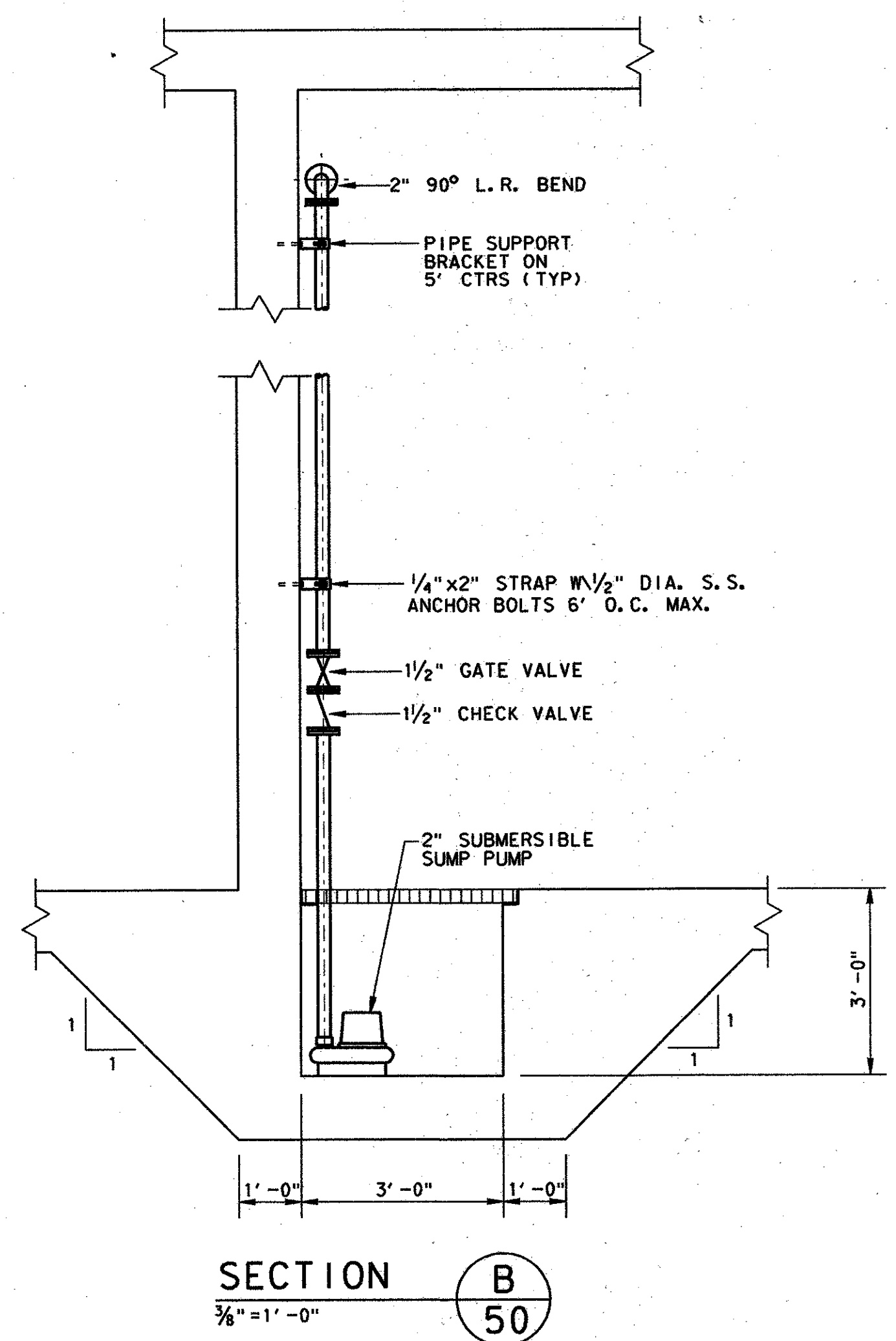
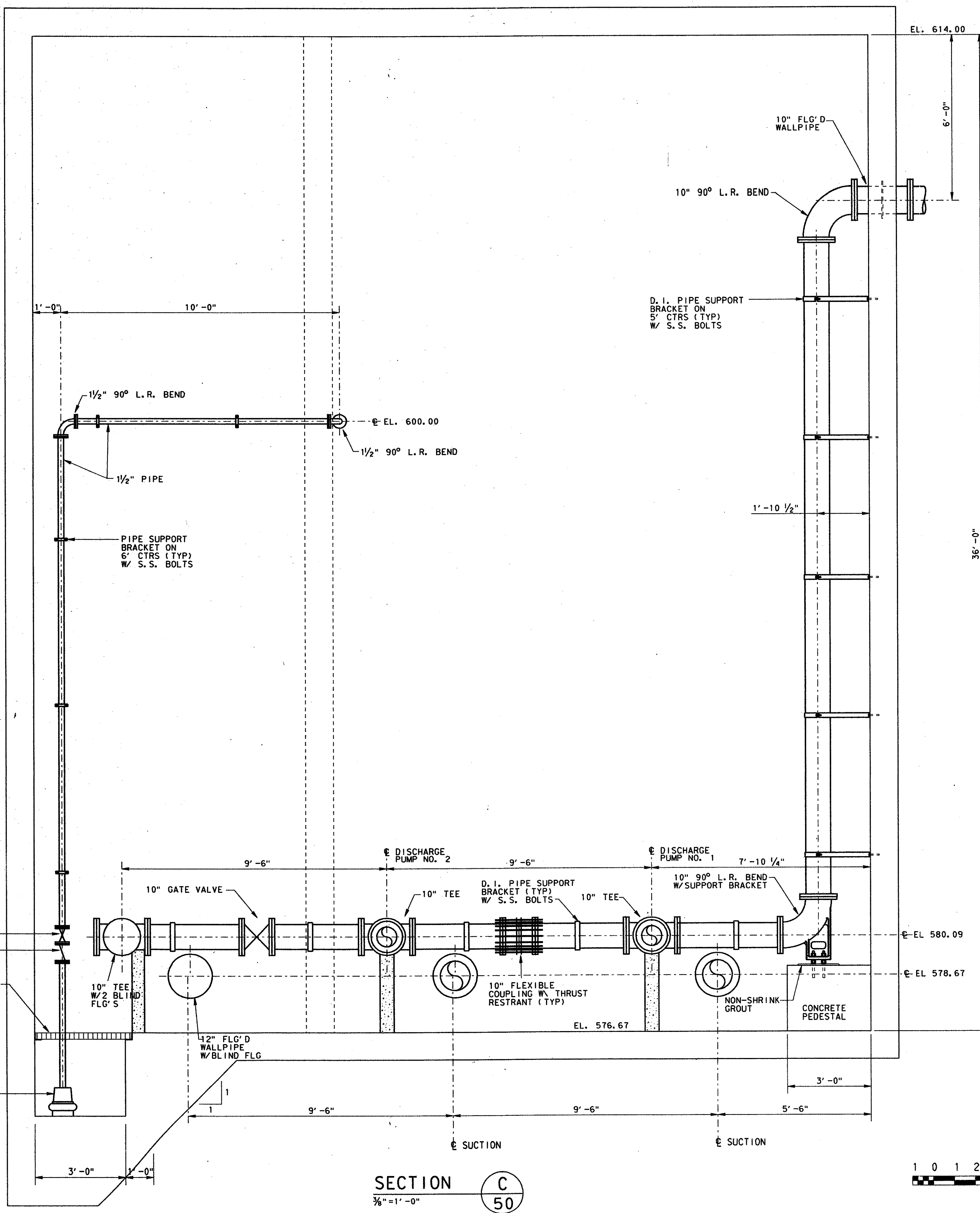
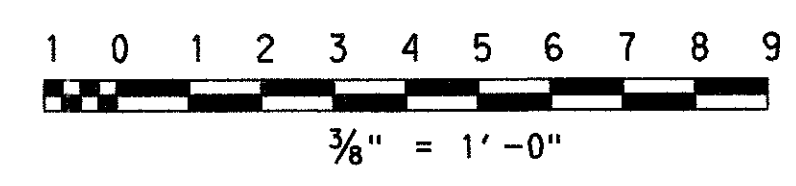


REVISIONS  
 NO. DATE REVISION  
 1 08/08/96  
 2 08/08/96  
 3 08/08/96  
 4 08/08/96  
 5 08/08/96  
 6 08/08/96  
 7 08/08/96  
 8 08/08/96  
 9 08/08/96  
 10 08/08/96  
 11 08/08/96  
 12 08/08/96  
 13 08/08/96  
 14 08/08/96  
 15 08/08/96  
 16 08/08/96  
 17 08/08/96  
 18 08/08/96  
 19 08/08/96  
 20 08/08/96  
 21 08/08/96  
 22 08/08/96  
 23 08/08/96  
 24 08/08/96  
 25 08/08/96  
 26 08/08/96  
 27 08/08/96  
 28 08/08/96  
 29 08/08/96  
 30 08/08/96  
 31 08/08/96  
 32 08/08/96  
 33 08/08/96  
 34 08/08/96  
 35 08/08/96  
 36 08/08/96  
 37 08/08/96  
 38 08/08/96  
 39 08/08/96  
 40 08/08/96  
 41 08/08/96  
 42 08/08/96  
 43 08/08/96  
 44 08/08/96  
 45 08/08/96  
 46 08/08/96  
 47 08/08/96  
 48 08/08/96  
 49 08/08/96  
 50 08/08/96  
 51 08/08/96  
 52 08/08/96  
 53 08/08/96  
 54 08/08/96  
 55 08/08/96  
 56 08/08/96  
 57 08/08/96  
 58 08/08/96  
 59 08/08/96  
 60 08/08/96  
 61 08/08/96  
 62 08/08/96  
 63 08/08/96  
 64 08/08/96  
 65 08/08/96  
 66 08/08/96  
 67 08/08/96  
 68 08/08/96  
 69 08/08/96  
 70 08/08/96  
 71 08/08/96  
 72 08/08/96  
 73 08/08/96  
 74 08/08/96  
 75 08/08/96  
 76 08/08/96  
 77 08/08/96  
 78 08/08/96  
 79 08/08/96  
 80 08/08/96  
 81 08/08/96  
 82 08/08/96  
 83 08/08/96  
 84 08/08/96  
 85 08/08/96  
 86 08/08/96  
 87 08/08/96  
 88 08/08/96  
 89 08/08/96  
 90 08/08/96  
 91 08/08/96  
 92 08/08/96  
 93 08/08/96  
 94 08/08/96  
 95 08/08/96  
 96 08/08/96  
 97 08/08/96  
 98 08/08/96  
 99 08/08/96  
 100 08/08/96



SECTION C  
3/8" = 1'-0"

SECTION B  
3/8" = 1'-0"



4			
3			
2			
1			
NO.	DATE	REVISION	APPROV.
TOWN OF ADDISON, TEXAS			
MIDWAY/BELTLINE SANITARY SEWER PHASE II			
LIFT STATION MECHANICAL PLAN SECTIONS			
<b>Carter Burgess</b> Consultants in Engineering, Architecture, Planning and the Environment CARTER & BURGESS, INC. 7950 ELMBROOK DRIVE, SUITE 250 DALLAS, TX 75247-4961			
Unit	Scale	3/8" = 1'	Date 04-05-96
Designed	J. Lindner	Checked	J. Lindner
Drawn	R. Howman	Approved	J. Lindner
Job No.	93327601D	Sheet	51 of 63

