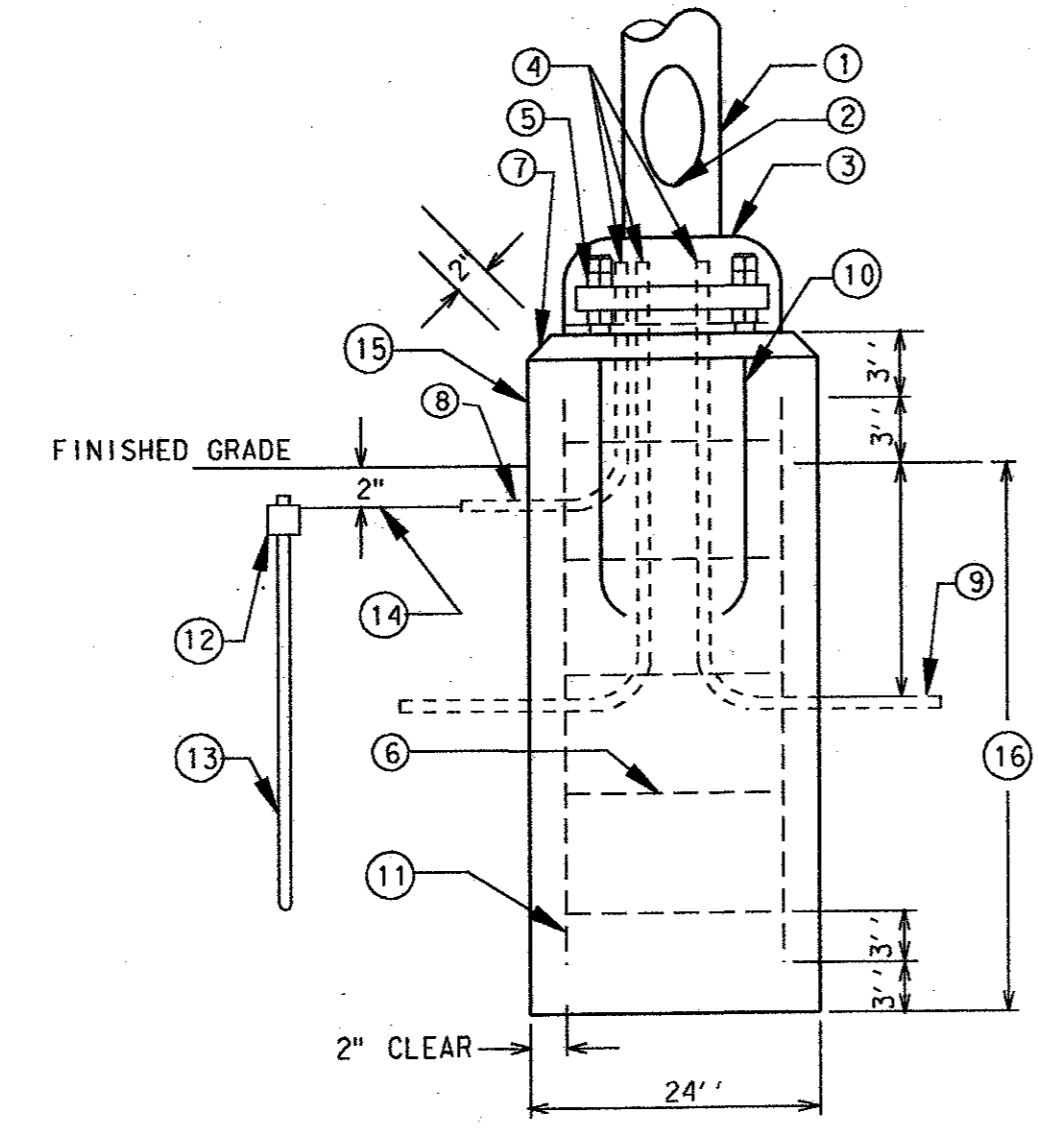
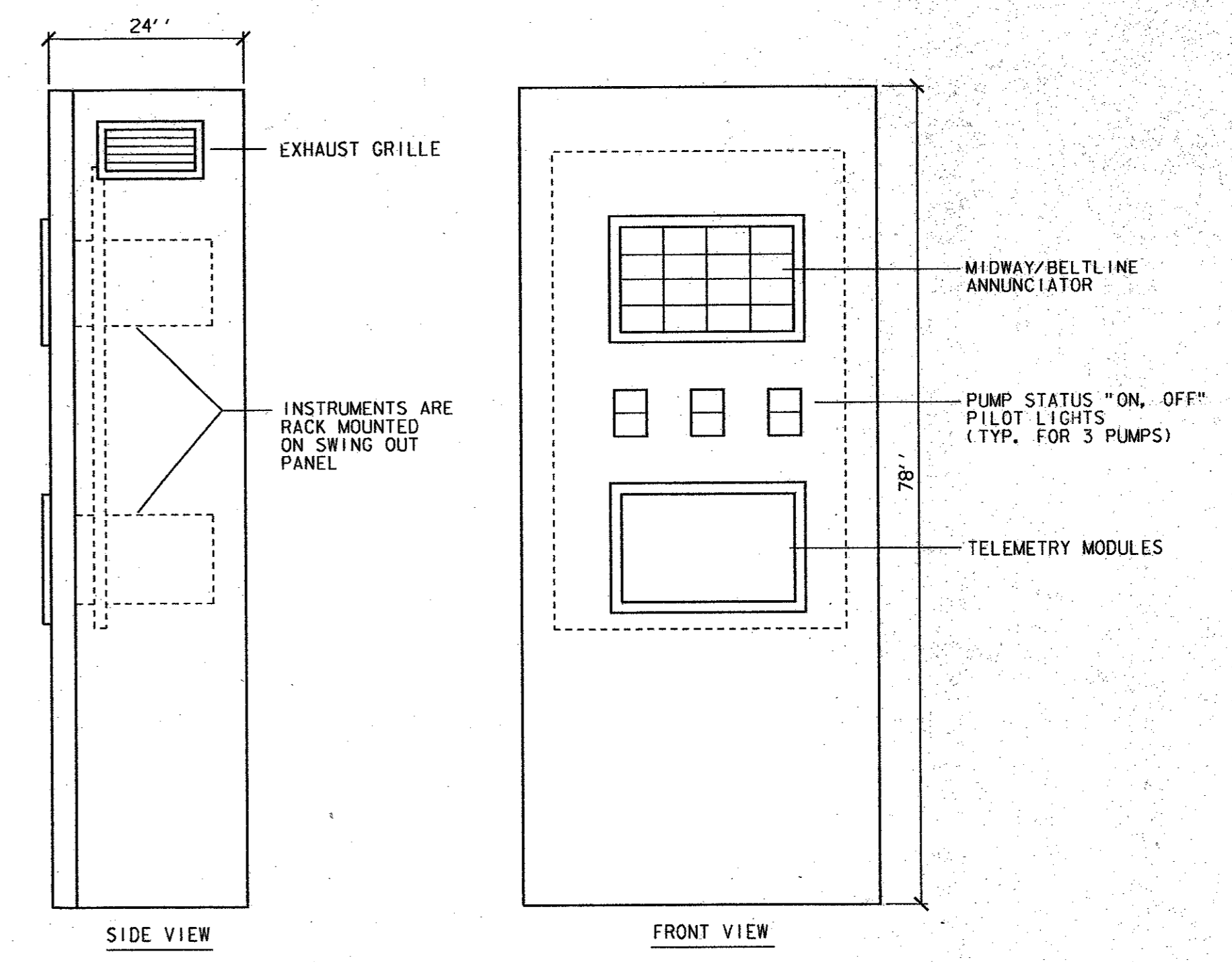


1 2E4 DUCT BANK
SCALE: NO SCALE

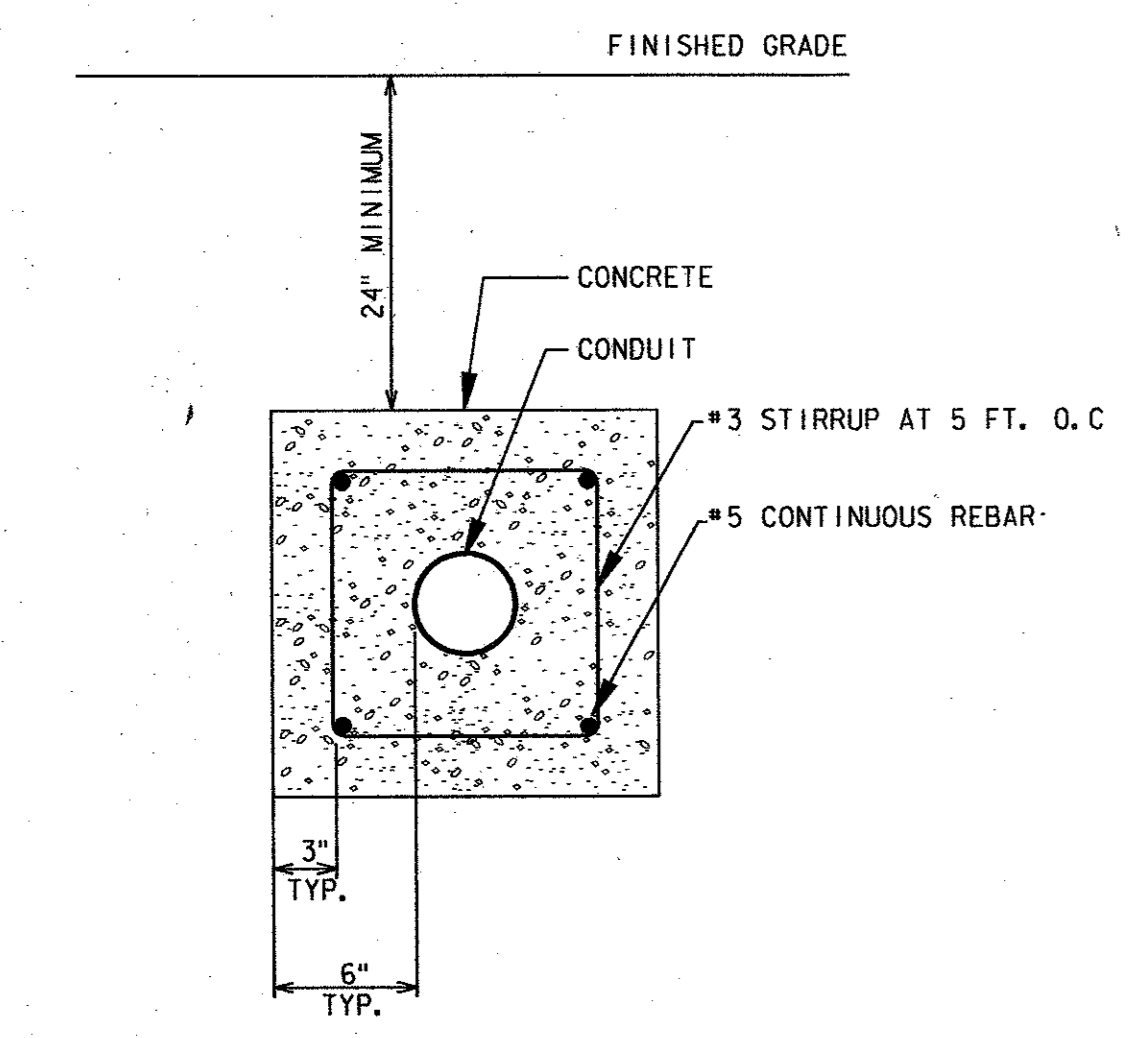


- NOTES BY SYMBOL**
- LIGHTING STANDARD.
 - HANDHOLE: PROVIDE INTERIOR GROUNDING LUG ACCESSIBLE FROM OPENING. PROVIDE STAINLESS STEEL COVER WITH STAINLESS STEEL SCREWS.
 - BASE COVER: MATCH MATERIAL OF POLE, EXCEPT WHERE POLE IS CONCRETE, BASE COVER SHALL BE STAINLESS STEEL.
 - CONNECT CONDUITS TO GROUNDING LUG AND GROUNDING CONDUCTOR TO GROUND ROD.
 - PROVIDE BOTTOM NUT FOR LEVELING AND DOUBLE NUTS ON TOP.
 - NO. 4 STEEL REINFORCING TIES ON 12" CENTERS.
 - CHAMFER EDGES ON BASE.
 - 1" RIGID GALVANIZED CONDUIT.
 - RIGID GALVANIZED STEEL CONDUIT TO 12" BEYOND EDGE OF CONCRETE BASE.
 - GALVANIZED STEEL ANCHOR BOLTS, FURNISHED WITH POLE, AS REQUIRED BY MANUFACTURER.
 - EIGHT NO. 4 STEEL REINFORCING RODS.
 - EXOTHERMIC WELD.
 - 3/4" X 10'-0" COPPER CLAD GROUND ROD.
 - NO. 6 BARE STRANDED COPPER CLAD GROUND WIRE CONNECT TO GROUND ROD, CONDUITS AND GROUNDING LUG.
 - CONCRETE BASE SHALL BE HAND RUBBED TO REMOVE ALL IRREGULARITIES AND PROVIDE SMOOTH FINISH. PAINT AS DIRECTED BY ARCHITECT.
 - REFER TO SPECIFICATIONS FOR DIMENSIONS.

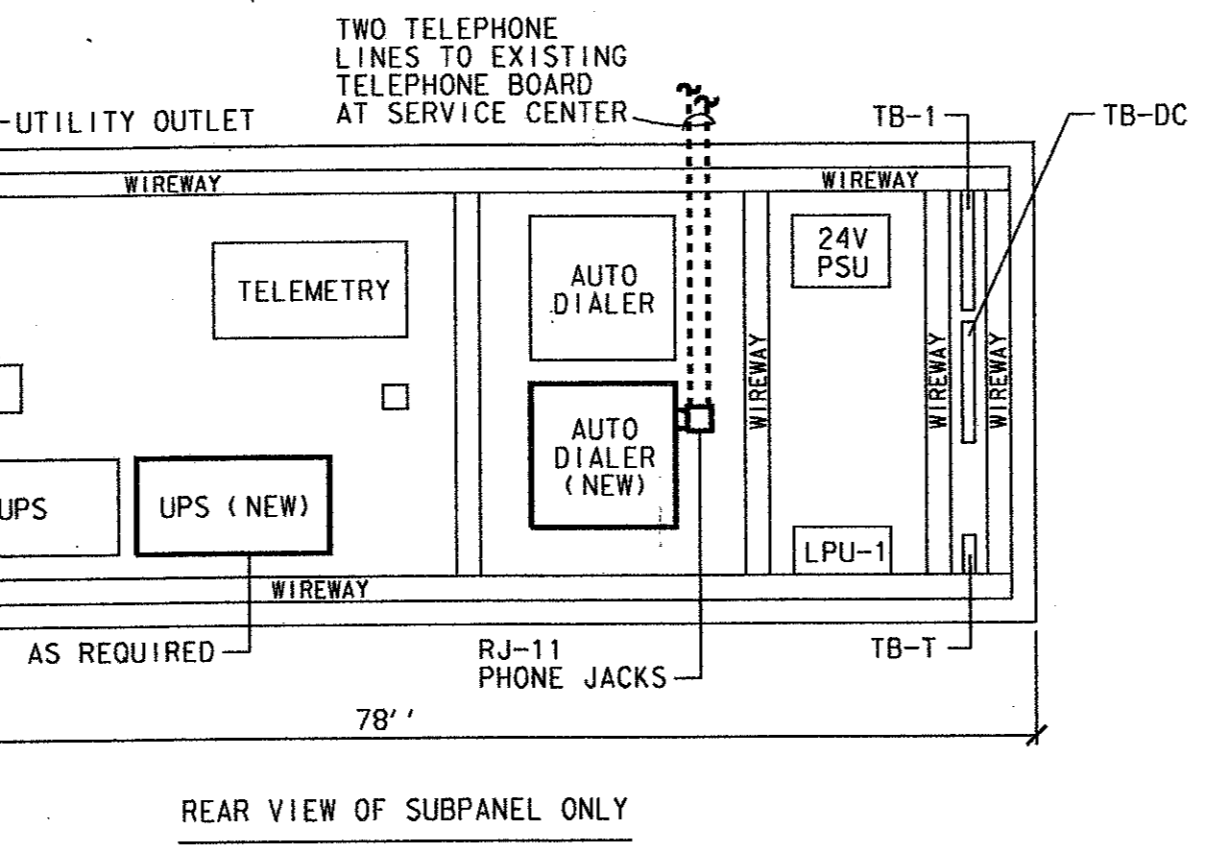
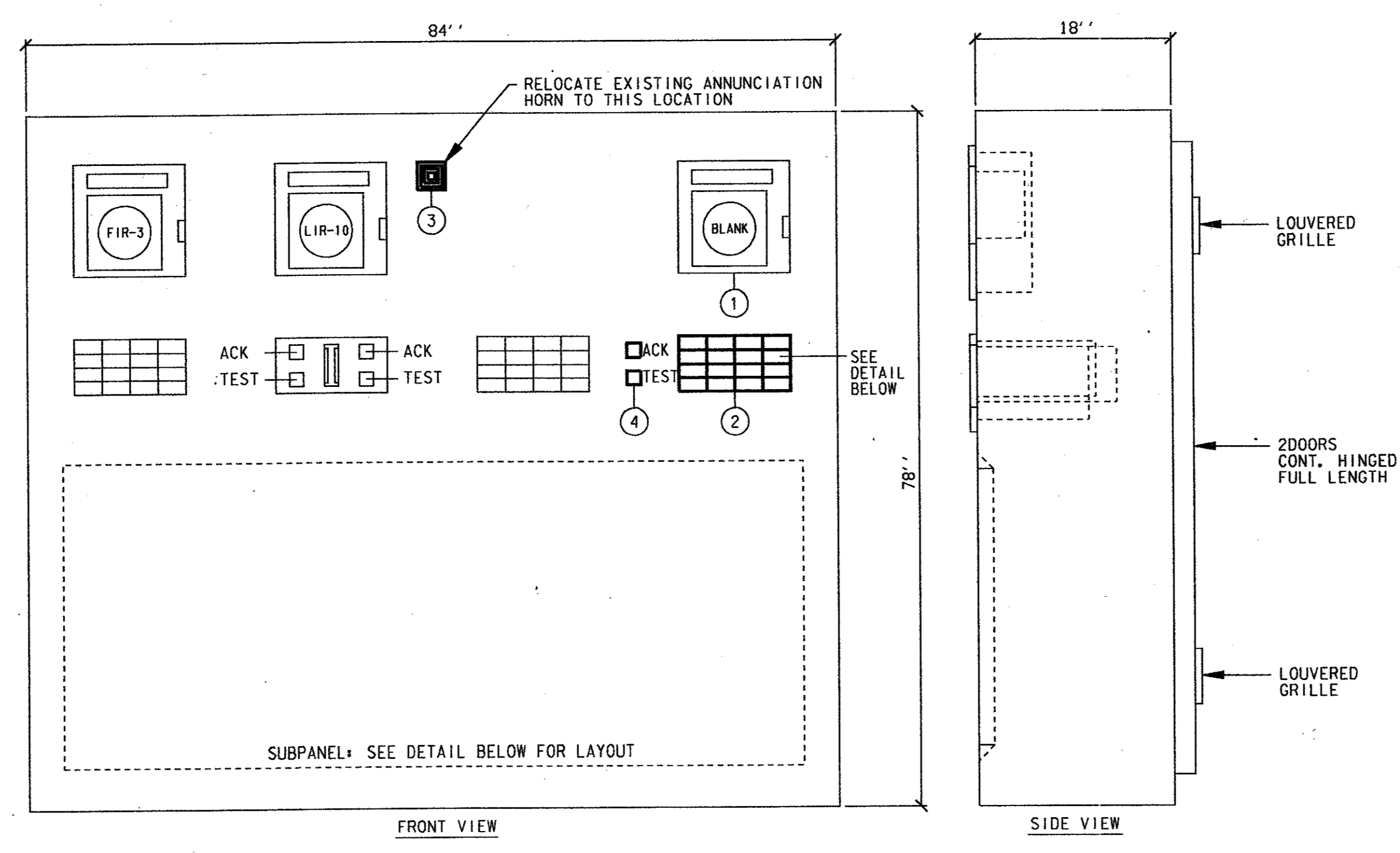
4 POLE BASE DETAIL
SCALE: NO SCALE



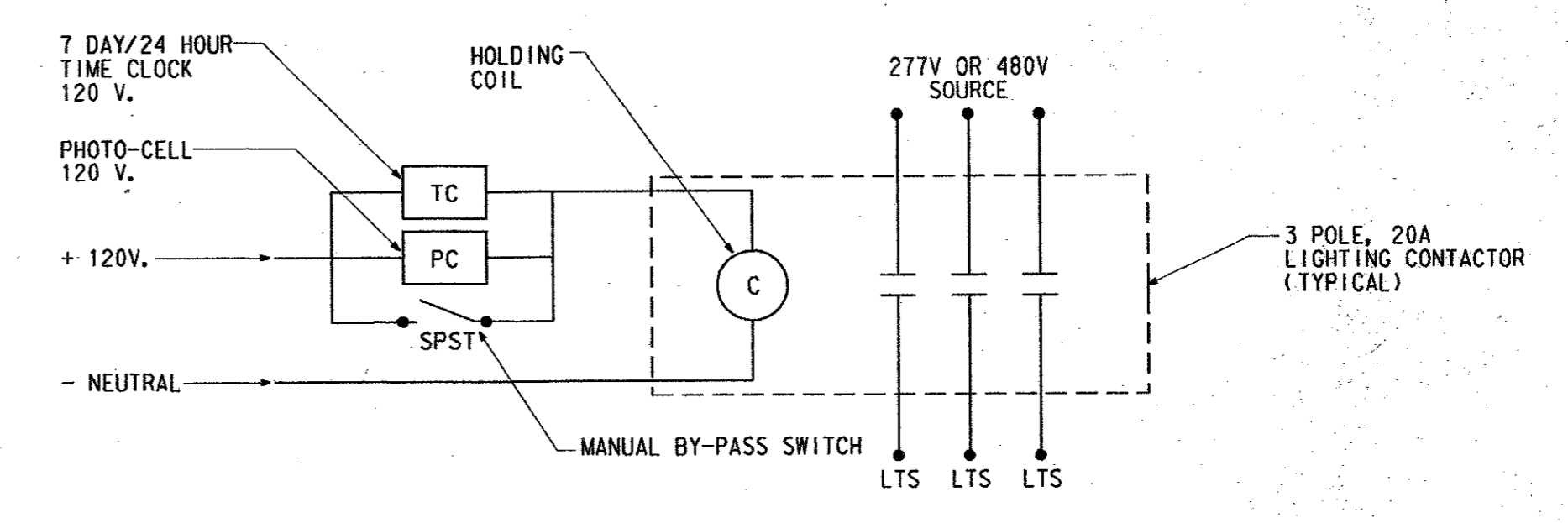
6 LEVEL CONTROL/TELEMETRY PANEL DETAIL
SCALE: NO SCALE



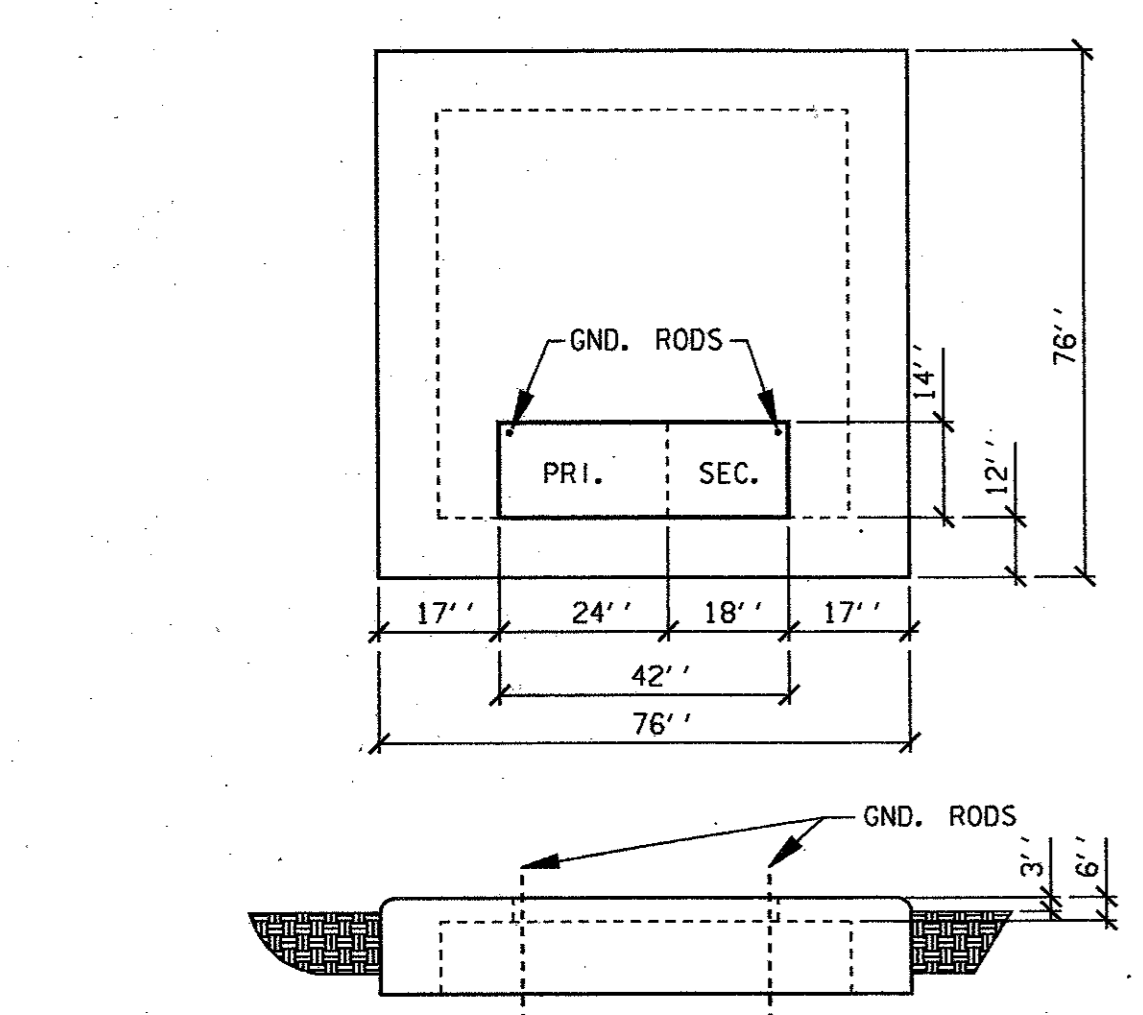
2 1E2 DUCT BANK
SCALE: NO SCALE



5 MODIFICATIONS TO EXISTING SERVICE CENTER MONITOR PANEL (GARYCO)
SCALE: NO SCALE



7 SITE LIGHTING CONTROL SCHEMATIC
SCALE: NO SCALE



3 PADMOUNT TRANSFORMER PAD DETAIL
SCALE: NO SCALE

- NOTES BY SYMBOL**
- ADD NEW CHESSELL, MODEL 390, RECORDER IN EXISTING BLANK LOCATION. PROVIDE NEW ANALOG TONE RECEIVER - DAO MODEL DAR 36-1X AND DR 38.
 - ADD NEW MIDWAY/BELTLINE LIFT STATION ANNUNCIATOR IN LOCATION UTILIZED BY EXISTING ANNUNCIATOR HORN. SEE DETAIL BELOW.
 - NEW LOCATION OF EXISTING ANNUNCIATOR HORN.
 - NEW ANNUNCIATOR TEST PUSHBUTTON / ACK TO MATCH EXISTING.
- | | | | |
|------------------------|---------------------|-------------------|--------------------------------|
| PUMP #1 FAILURE | HIGH LEVEL ALARM | POWER FAILURE | SPARE (ALARM MOD) |
| PUMP #2 FAILURE | LOW LEVEL ALARM | PHASE LOSS | MIDWAY/BELTLINE L.S. INTRUSION |
| FUTURE-PUMP #3 FAILURE | DRY WELL HIGH LEVEL | TELEMETRY FAIL | MIDWAY/BELTLINE L.S. FIRE |
| SPARE (ALARM MOD) | SPARE (ALARM MOD) | SPARE (ALARM MOD) | SPARE (ALARM MOD) |

MIDWAY/BELTLINE LIFT STATION ANNUNCIATOR DETAIL

4			
3			
2			
1			
NO.	DATE	REVISION	APPROV.
TOWN OF ADDISON, TEXAS			
MIDWAY/BELTLINE SANITARY SEWER PHASE II			
LIFT STATION ELECTRICAL DETAILS			
Carter Burgess			
<small>Consultants in Engineering, Architecture, Planning and the Environment CARTER & BURGESS, INC. 7550, ELMENDORF DRIVE, SUITE 250 DALLAS, TX 75247-4963</small>			
Unit:	Scale:	Date:	04-05-96
Designed:	R. POWERS	Checked:	R. POWERS
Job No.:	93327601D		
Drawn:	J. WEBB	Approved:	J. Lindner
Sheet:	58 of 63		

