

DRAINAGE CALCULATIONS 12/06/2008

Drainage Area #	Impervious Area C=0.95	Pervious Area C=0.25	Total Area (acres)	C Pervious	C Impervious	CW	Tc	I100	Q100
EXISTING CONDITIONS									
B1	0.000	0.271	0.271	0.25	0.95	0.25	15	7.52	0.51
B2	0.096	1.013	1.109	0.25	0.95	0.31	15	7.52	2.59
TOTAL			1.38						3.10
OS-1									
OS-1	0.204	0.003	0.207	0.25	0.95	0.94	15	7.52	1.47
OS-2	1.286	0.920	2.206	0.25	0.95	0.66	15	7.52	10.91
OS-3	0.987	1.416	2.403	0.25	0.95	0.55	15	7.52	10.00
OS-4	0.074	0.138	0.213	0.25	0.95	0.49	15	7.52	0.79

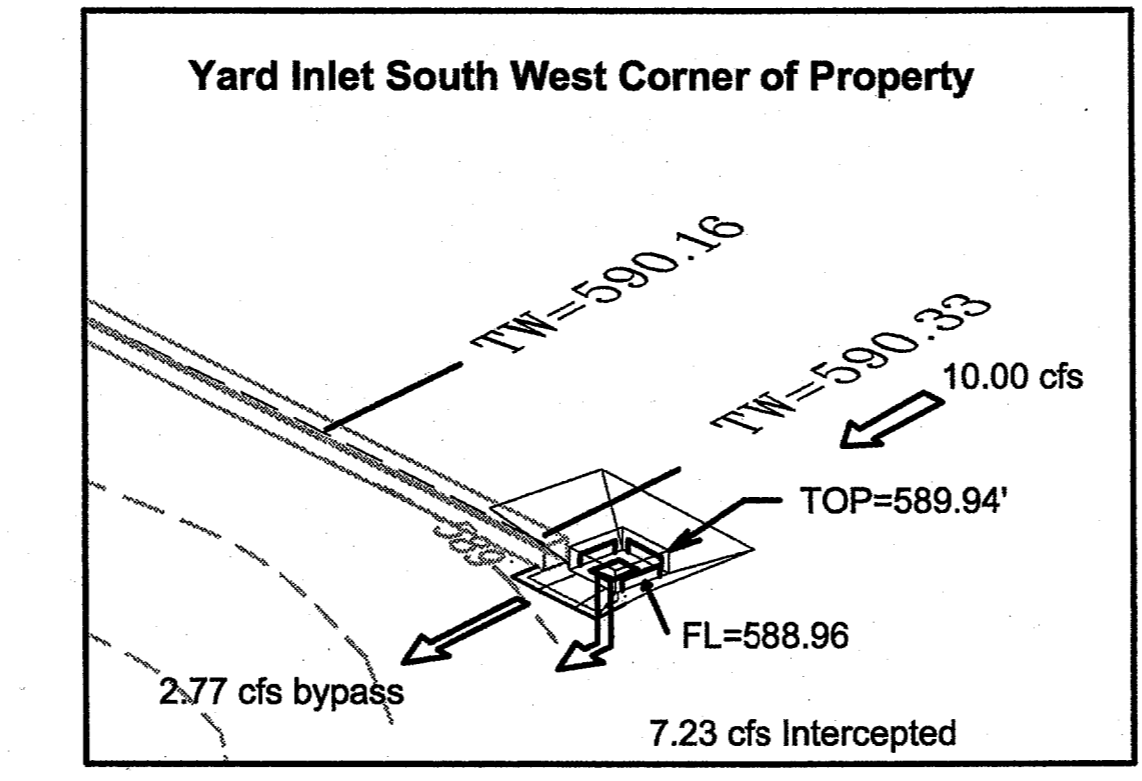
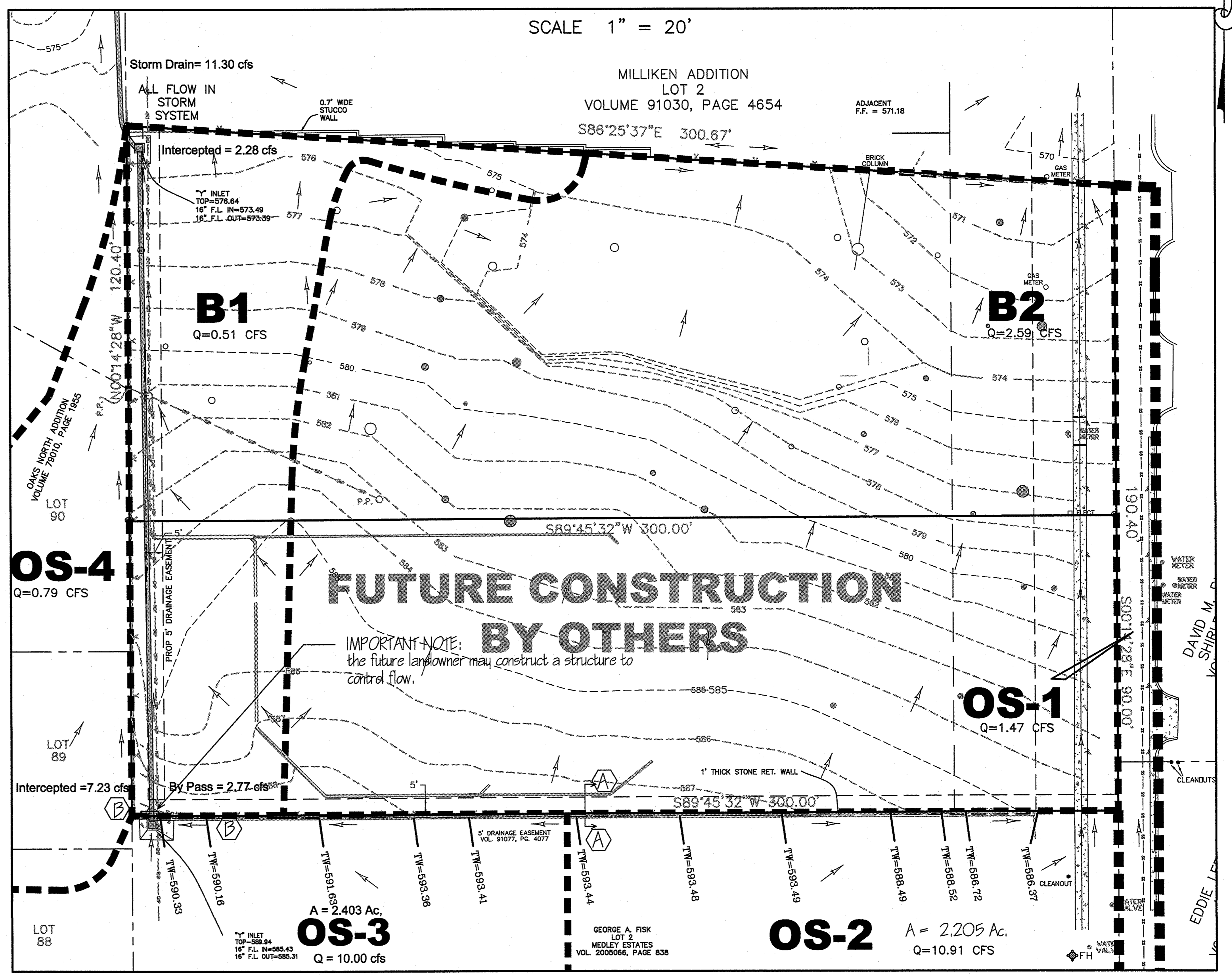
TEXAS EXCAVATION SAFETY SERVICES
1-800-344-8377

GRAPHIC SCALE
0 20 40 60 80 100 FEET

LEGEND

- EXIST. DRAINAGE FLOW ARROW
- - - EXISTING CONTOUR
- B1** Q=0.00 CFS DRAINAGE AREA NUMBER 100 YR RUNOFF

CALL BEFORE YOU DIG
1-800-245-4545
TEXAS ONE CALL SYSTEM



Summary for Pond 2P: (new Pond)

[82] Warning: Early inflow requires earlier time span
[57] Hint: Peaked at 589.38' (Flood elevation advised)

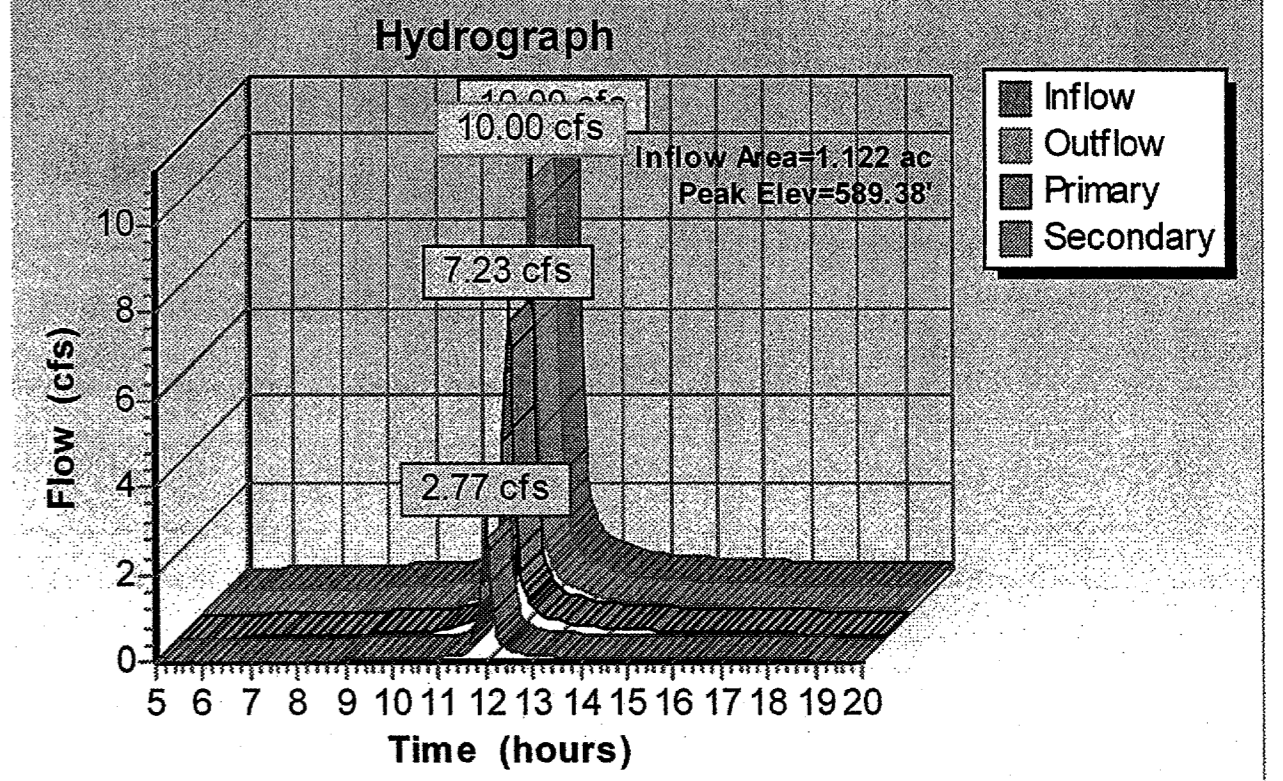
Inflow Area = 1.122 ac. 0.00% Impervious, Inflow Depth > 5.84"
Inflow = 10.00 cfs @ 12.01 hrs, Volume = 0.546 af
Outflow = 10.00 cfs @ 12.01 hrs, Volume = 0.546 af, Atten=0%, Lag=0.0 min
Primary = 7.23 cfs @ 12.01 hrs, Volume = 0.395 af
Secondary = 2.77 cfs @ 12.01 hrs, Volume = 0.150 af

Routing by Stor-Ind method, Time Span=5.00-20.00 hrs, dt=0.05 hrs
Peak Elev=589.38 @ 12.01 hrs

Devices Routing Invert Outlet Devices
#1 Primary 588.96' 2.00' x 2.00' Horiz. Orifice/Grate Limited to weir flow C=0.600
#2 Secondary 588.96' 3.0' long x 1.00' rise Sharp-Crested Rectangular Weir
2 End Contractions 1.0' Crest Height

Primary Outflow Max=7.11 cfs @ 12.01 hrs HW=589.38' (Free Discharge)
L-1-Orifice/Grate (Weir Controls 7.11 cfs @ 2.12 fps)

Secondary Outflow Max=2.72 cfs @ 12.01 hrs HW=589.38' (Free Discharge)
L-2-Sharp-Crested Rectangular Weir (Weir Controls 2.72 cfs @ 2.23 fps)



DATE: _____

BY: _____

REVISIONS: _____

LARRY BLILIE P.E.
OLSON LAND DEVELOPMENT SERVICES
988 CR. 108
WHITESBORO, TX 76273
PH. 940.595.0528
CONTACT: NATHAN OLSON

LOT 1B, MILLIKEN ADDITION
VICTOR MEYERS CUSTOM HOMES, LLC
(OWNER LOT 1B) MICHAEL & RACHEL HARDIN

DRAINAGE PLAN
(EXISTING CONDITIONS)

PROJECT MANAGER: NJO
PROJECT TECHNICIAN: NJO
JOB NUMBER: 2006.018
SHEET NUMBER: 3.1

1-7-09

STATE OF TEXAS
LARRY A. BLILIE
Professional Engineer
No. 91583