



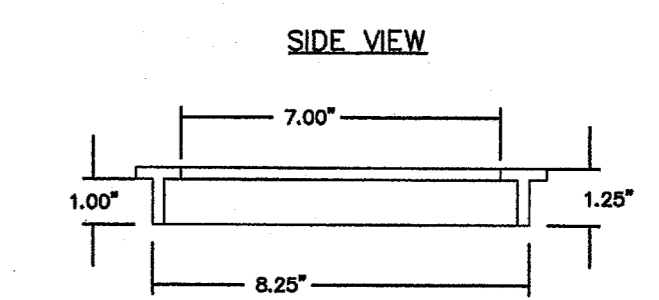
TEXAS EXCAVATION
SAFETY SERVICES
1-800-344-8377

GRATE CAPACITY CALCULATION

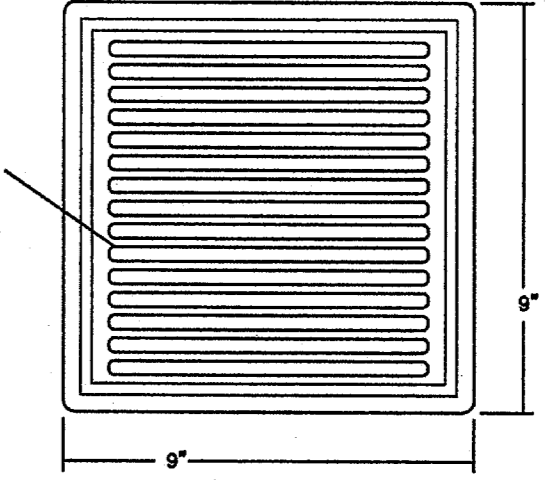
$Q = (Co)A(2gd)^{0.5}$
 WHERE:
 Q = INLET CAPACITY, C.F.S.
 Co = ORIFICE COEFFICIENT = 0.67
 A = CLEAR OPENING AREA OF THE GRATE, FT²
 g = 32.2 FT/SEC²
 d = DEPTH OF WATER ABOVE THE TOP OF GRATE, FT
 MINIMUM ALLOWED CLEAR OPENING OF 9" SQUARE GRATE TO BE 27.3 IN² = 0.19 FT²
 $Q = (Co)A(2gd)^{0.5}$
 $Q = 0.67 \times 0.19(2 \times 32.2 \times 0.5)^{0.5}$

Q (cfs)	Head	
	3"	6"
	0.51	0.72

GRATE INLET DETAIL

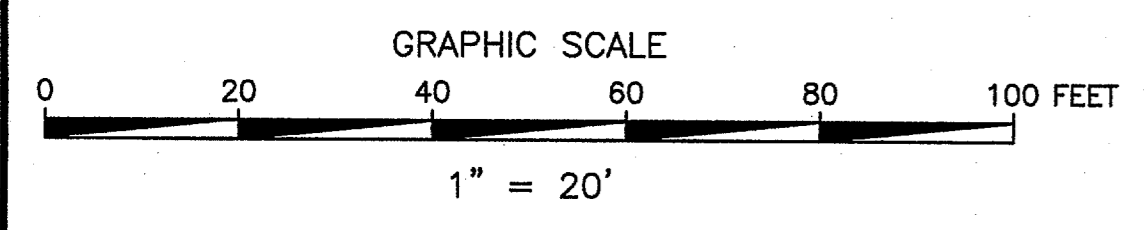
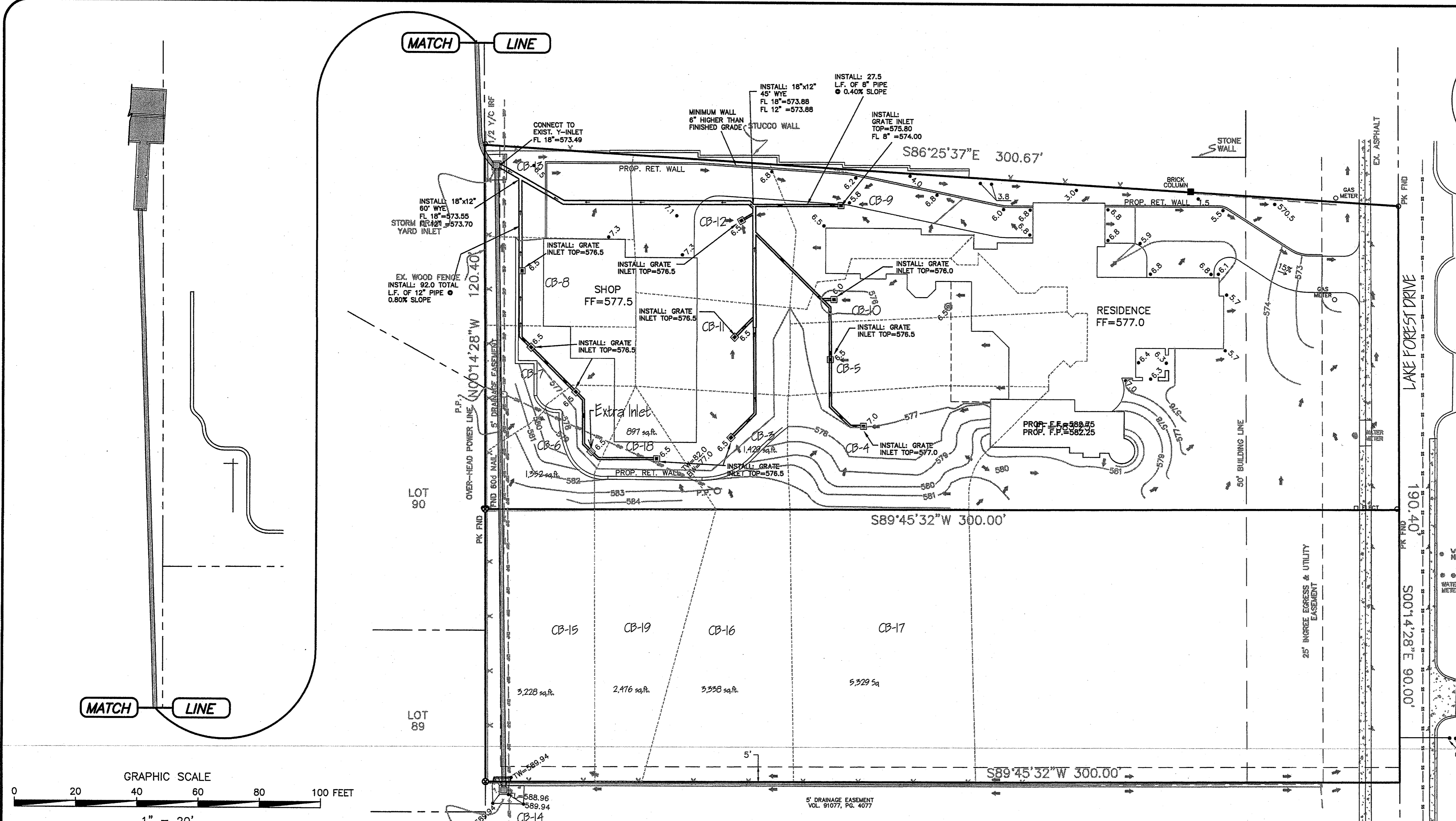


TOP VIEW



SITE NOTES

- 1) CONTRACTOR SHALL REFER TO ARCHITECTURAL PLANS FOR EXACT LOCATIONS AND DIMENSIONS OF VESTIBULE, SLOPED PAVING, EXIT PORCHES, RAMPS, TRUCK DOCKS, PRECISE BUILDING DIMENSIONS, EXACT BUILDING UTILITY ENTRANCE LOCATIONS, TOTAL NUMBER, LOCATIONS & SIZES OF ROOF DOWNSPOUTS.
- 2) PRIVATE STORM DRAIN PIPE TO BE CONSTRUCTED OF H.D.P.E. SUCH AS ADS-N12 OR EQUAL.
- 3) ALL CATCH BASINS TO BE 9" x 9" SQUARE P.V.C.
- 4) ALL GRATE INLETS TO BE 9" x 9" SQUARE LOW-PROFILE WITH 5/16" OR GREATER GRATE OPENINGS WITH 27.3 SQUARE INCH OR GREATER OPEN SURFACE AREA.
- 5) ALL ROOF DOWNSPOUTS SHALL CONNECT DIRECTLY TO PRIVATE STORM SYSTEM.
- 6) REFER TO ARCHITECTURAL PLANS FOR PLANS AND SPECS. FOR PRIVATE ENTRY GATES.
- 7) TREE SURVEY PERFORMED BY OTHERS.
- 8) DAMAGE TO LAKE FOREST DRIVE AND THE ASSOCIATED DRAINAGE SWALE DUE TO CONSTRUCTION RELATED ACTIVITIES SHALL BE REPAIRED/REPLACED PRIOR TO FINAL ACCEPTANCE.



BENCHMARK

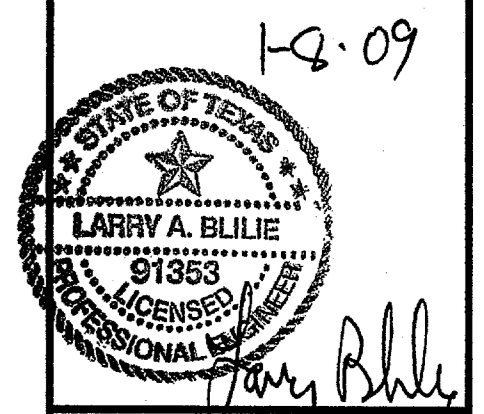
"I" SQUARE CUT ON CURB RETURN, WEST SIDE OF MONFORT & SAKOWITZ, NE CORNER. ELEV=608.63

D.A.	T.C.	C.	$1/100$ (IN/100)	A (ACRES)	Q_{100} (CFS)	Q_{100} Carry Over	COMMENTS
CB-3	10	0.80	8.74	0.033	0.22	0.00	DRAINING TO INLET "CB-3"
CB-4	10	0.80	8.74	0.063	0.45	0.00	DRAINING TO INLET "CB-4"
CB-5	10	0.80	8.74	0.050	0.36	0.00	DRAINING TO INLET "CB-5"
CB-6	10	0.80	8.74	0.031	0.22	0.70	DRAINING TO INLET "CB-6"
CB-7	10	0.80	8.74	0.030	0.22	0.70	DRAINING TO INLET "CB-7"
CB-8	10	0.80	8.74	0.033	0.24	0.00	DRAINING TO INLET "CB-8"
CB-9	10	0.80	8.74	0.047	0.34	0.00	DRAINING TO INLET "CB-9"
CB-10	10	0.80	8.74	0.031	0.22	0.00	DRAINING TO INLET "CB-10"
CB-11	10	0.80	8.74	0.035	0.25	0.00	DRAINING TO INLET "CB-11"
CB-12	10	0.80	8.74	0.054	0.39	0.00	DRAINING TO INLET "CB-12"
CB-13	10	0.80	8.74	0.033	0.24	0.00	DRAINING TO INLET "CB-13"
CB-14	15	0.55	7.52	2.403	7.23	0.00	DRAINING TO INLET "CB-14"
CB-15	10	0.57	8.74	0.074	0.52	0.00	DRAINING TO INLET "CB-6"
CB-16	10	0.57	8.74	0.103	0.51	0.00	DRAINING TO INLET "CB-3"
CB-17	10	0.57	8.74	0.122	0.61	0.00	DRAINING TO INLET "CB-4"
CB-18	10	0.57	8.74	0.021	0.10	0.70	DRAINING TO INLET "CB-18"
CB-19	10	0.57	8.74	0.057	0.28	0.00	DRAINING TO INLET "CB-18"
CB-Extra 6	0	0.00	0.00	0.00	0.00	0.70	DRAINING TO INLET "CB-6"

DATE	BY	REVISIONS

LARRY BLILIE P.E.
OLSON LAND DEVELOPMENT SERVICES
 998 CR 109
 WHITESBORO, TX 76273
 PH. 940.395.0528
 CONTACT: NATHAN OLSON

LOT 1B, MILLIKEN ADDITION
 VICTOR MEYERS CUSTOM HOMES, LLC
 (OWNER LOT 1B) MICHAEL & RACHEL HARDIN
PRIVATE STORM SYSTEM PLAN



PROJECT MANAGER
NJ0
 PROJECT TECHNICIAN
NJ0
 JOB NUMBER
120-10981-000
 SHEET NUMBER