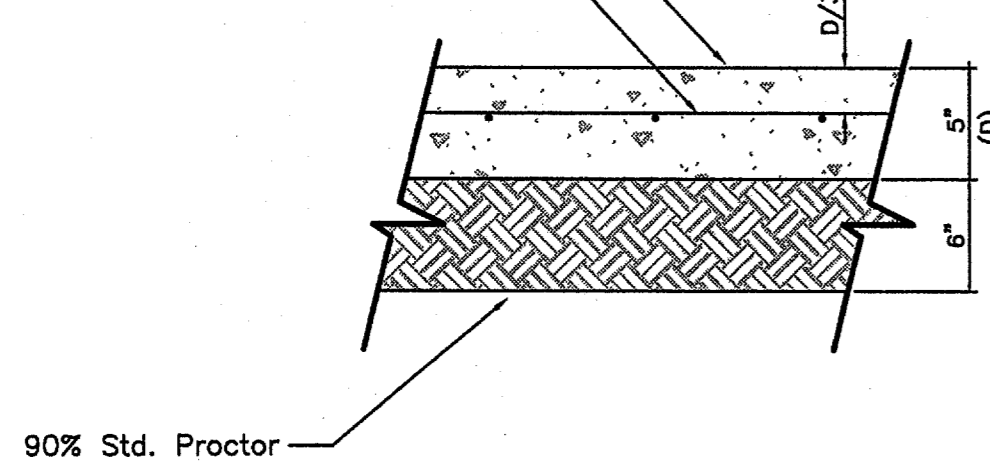


PORTLAND CEMENT CONCRETE PAVING
(3000 PSI AT 28 DAYS)
(REFER TO SITework SPECIFICATIONS)
NO. 3 BARS @ 24" O.C.E.W.



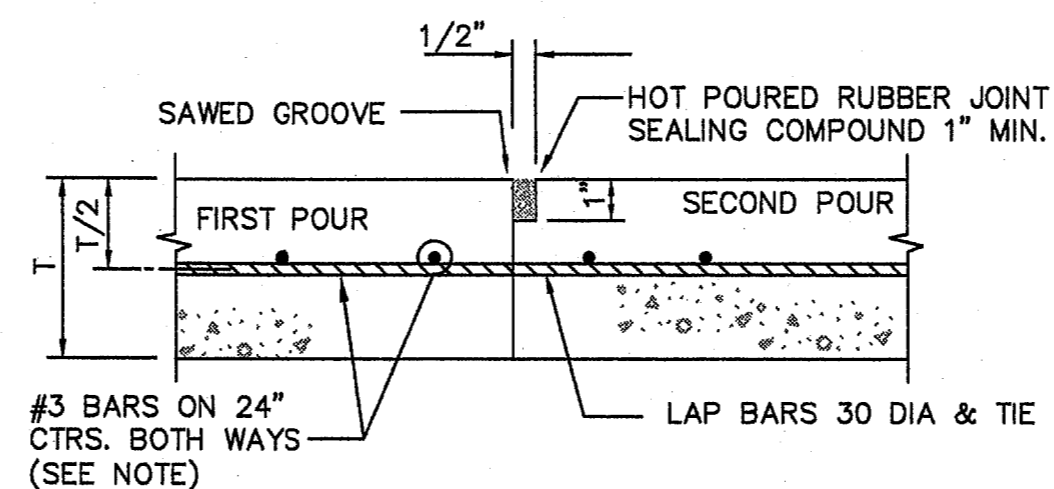
CONCRETE PAVEMENT (DRIVEWAYS)

**PORTLAND CEMENT
CONCRETE PAVEMENT SECTIONS**

NOTES:

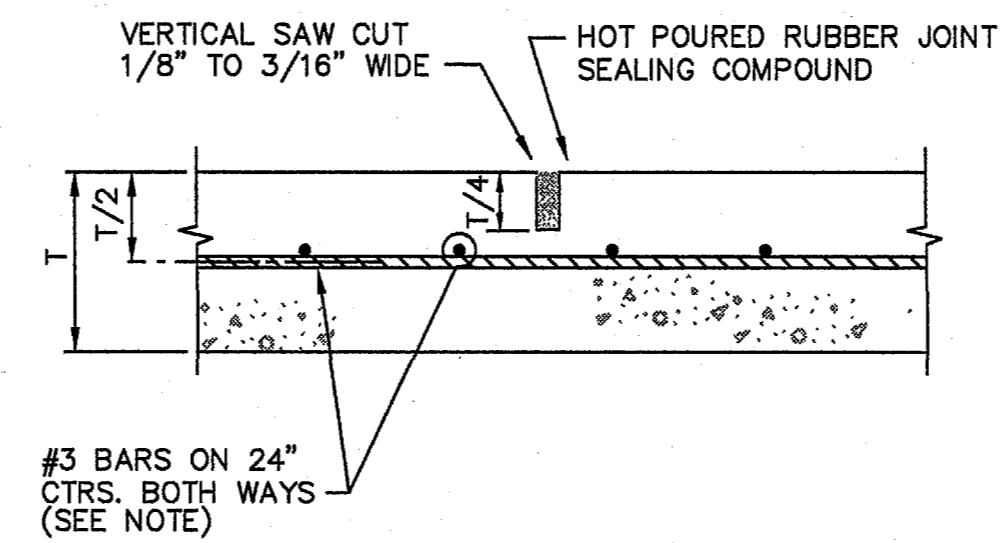
- 1) THE EXPOSED SURFACE OF THE SOILS SHOULD BE SCARIFIED TO A DEPTH OF AT LEAST 6 INCHES AND MIXED WITH AN ESTIMATED 10 PERCENT HYDRATED LIME, CURE FOR 48 HOURS, THEN BE REMIXED. THE RESULTING MIXTURE SHOULD THEN BE BROUGHT TO NEAR OPTIMUM (OPTIMUM TO PLUS 3 PERCENTAGE POINTS) MOISTURE CONDITION AND UNIFORMLY COMPACTED TO A MINIMUM OF 95 PERCENT OF STANDARD PROCTOR (ASTM D-698) DENSITY. THE COMPACTED MATERIAL SHOULD THEN BE COVERED IMMEDIATELY WITH THE PAVING OR KEPT MOIST UNTIL THE PAVING IS PLACED.
- 2) ANY ON SITE FILL SHALL BE PLACED IN SUBSEQUENT LIFTS IN THIN LAYERS NOT EXCEEDING 8 INCHES IN LOOSE THICKNESS TO THE DESIRED ROUGH GRADE AND COMPACT EACH LIFT TO A MINIMUM OF 95 PERCENT OF STANDARD PROCTOR (ASTM D-698) DENSITY. MAINTAIN MOISTURE WITHIN TWO PERCENT BELOW TO FOUR PERCENT ABOVE THEORETICAL OPTIMUM.
- 3) THE PORTLAND CEMENT CONCRETE SHALL BE AIR ENTRAINED TO RESULT IN 4-6% AIR AND SHALL POSSESS A MINIMUM COMPRESSIVE STRENGTH OF 3,000 P.S.I. AT 28 DAYS FOR REGULAR AND HEAVY DUTY.
- 4) CRACK CONTROL JOINTS SHALL BE PLACED AT 15' CENTER TO CENTER (MAX.)
- 5) REINFORCEMENT SHALL BE #3 BARS 18" O.C.E.W.

REINFORCED CONCRETE PAVEMENT



CONSTRUCTION JOINT

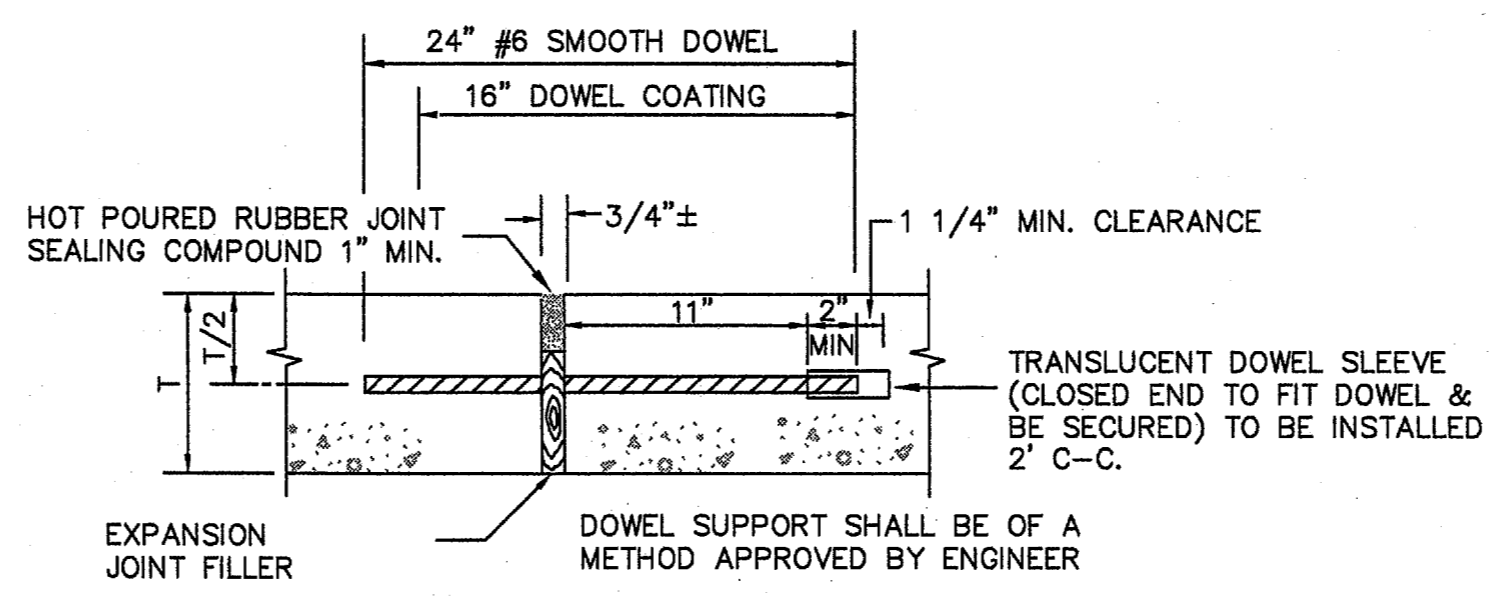
N.T.S.



SAWED CONTRACTION JOINT

N.T.S.

NOTE:
ALTERNATE REINFORCEMENT
#4 BARS ON 30" CTRS.
BOTH WAYS.

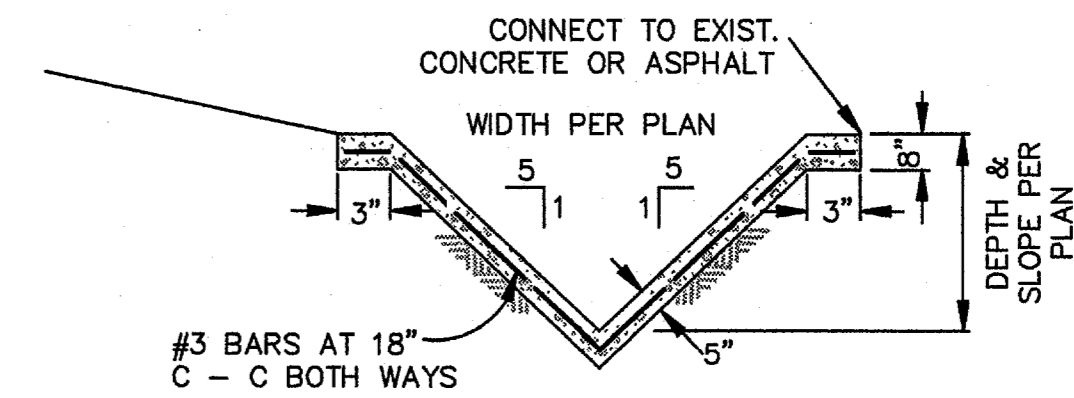


EXPANSION JOINT

(SPACED 600 FT. MAXIMUM; LOCATE AT
STRUCTURES AND AT INTERSECTION P.C.'S & P.T.'S)
N.T.S.

REINFORCED CONCRETE PAVEMENT

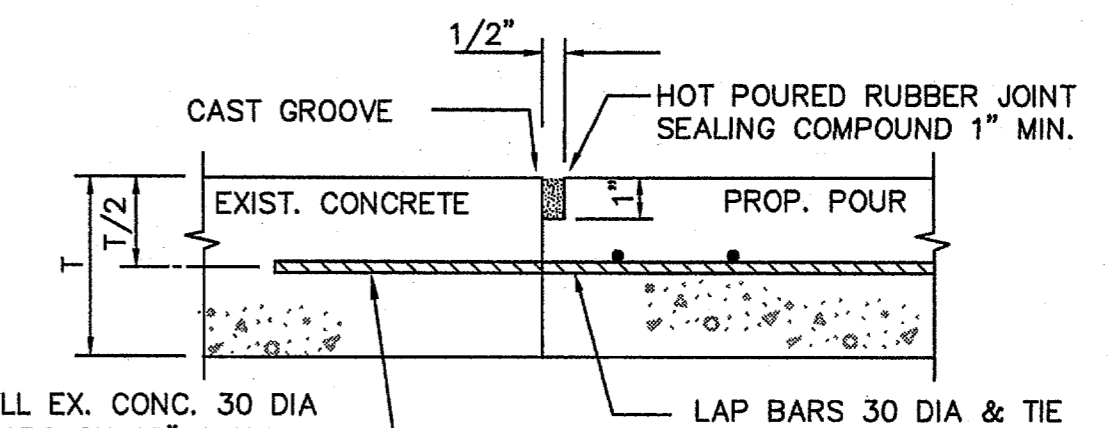
JOINTS



CONCRETE V-CHANNEL

N.T.S.

NOTE:
CONCRETE
SHALL BE
CLASS "A".

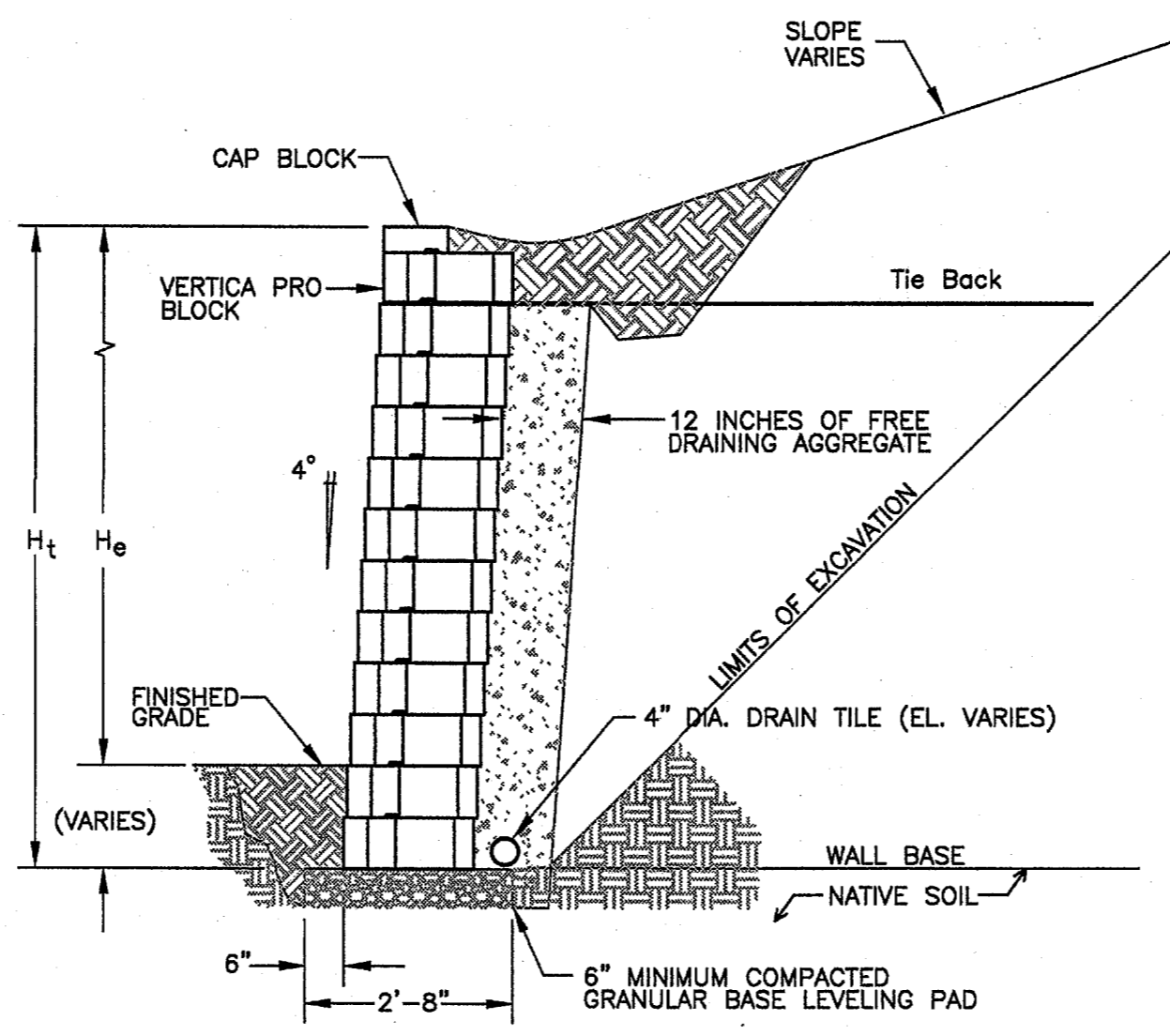
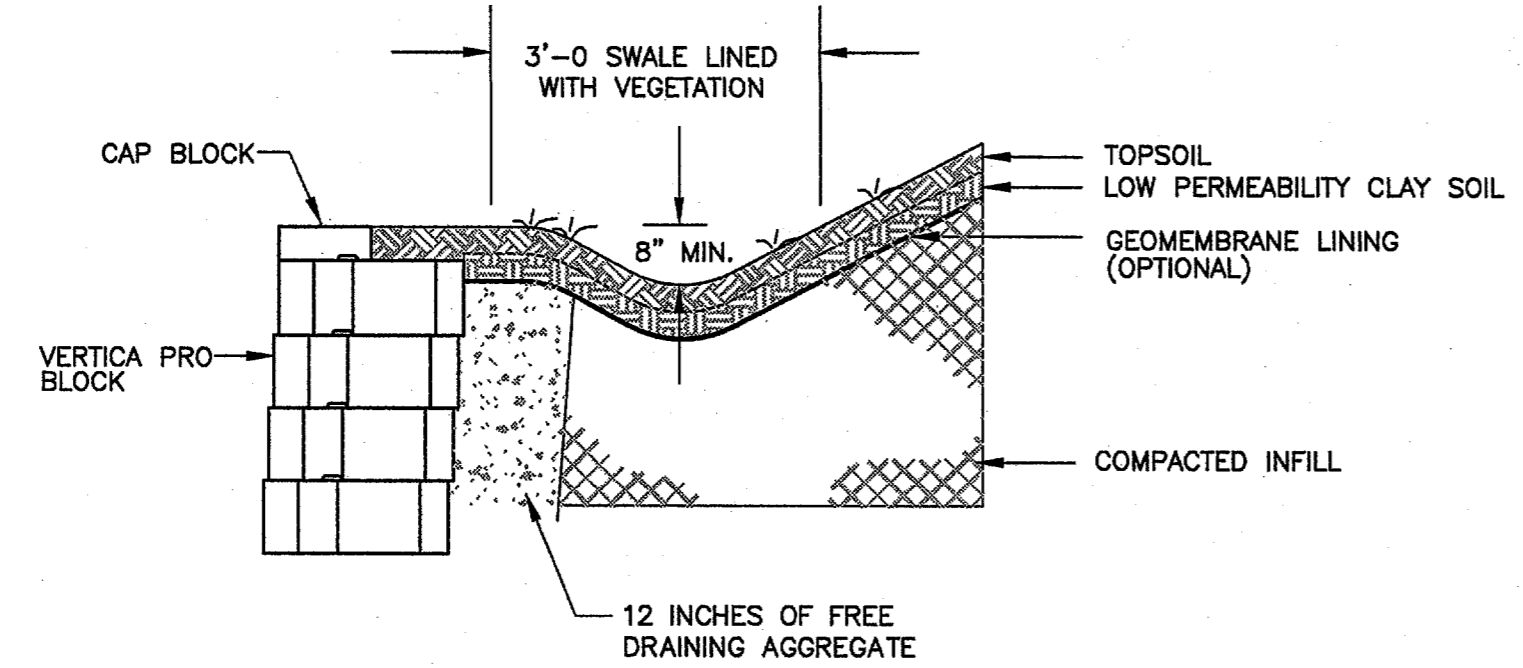


CONSTRUCTION JOINT FOR CONNECTION

TO EXISTING CONCRETE

CORE-DRILL EX. CONC. 30 DIA
FOR #3 BARS ON 18" CENTERS
SET IN PLACE WITH NON-SHRINK
GROUT

RETAINING WALL TO BE ANCHOR VERTICA PRO
OR APPROVED EQUAL
NO REINFORCEMENT REQUIRED FOR
WALLS NOT EXCEEDING 4 FEET.



RETAINING WALL

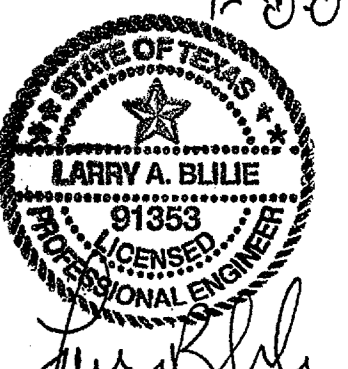
(NOT TO SCALE)

REVISIONS	DATE

LARRY BLILIE P.E.
OLSON LAND DEVELOPMENT SERVICES
999 CR 108
WHITESBORO, TX 76273
PH. 940.595.0528

CONTACT: NATHAN OLSON

LOT 1B, MILLIKEN ADDITION
VICTOR MEYERS CUSTOM HOMES, LLC
(OWNER LOT 1B) MICHAEL & RACHEL HARDIN



PROJECT MANAGER
NJO
PROJECT TECHNICIAN
CAB
JOB NUMBER
2006.018
SHEET NUMBER