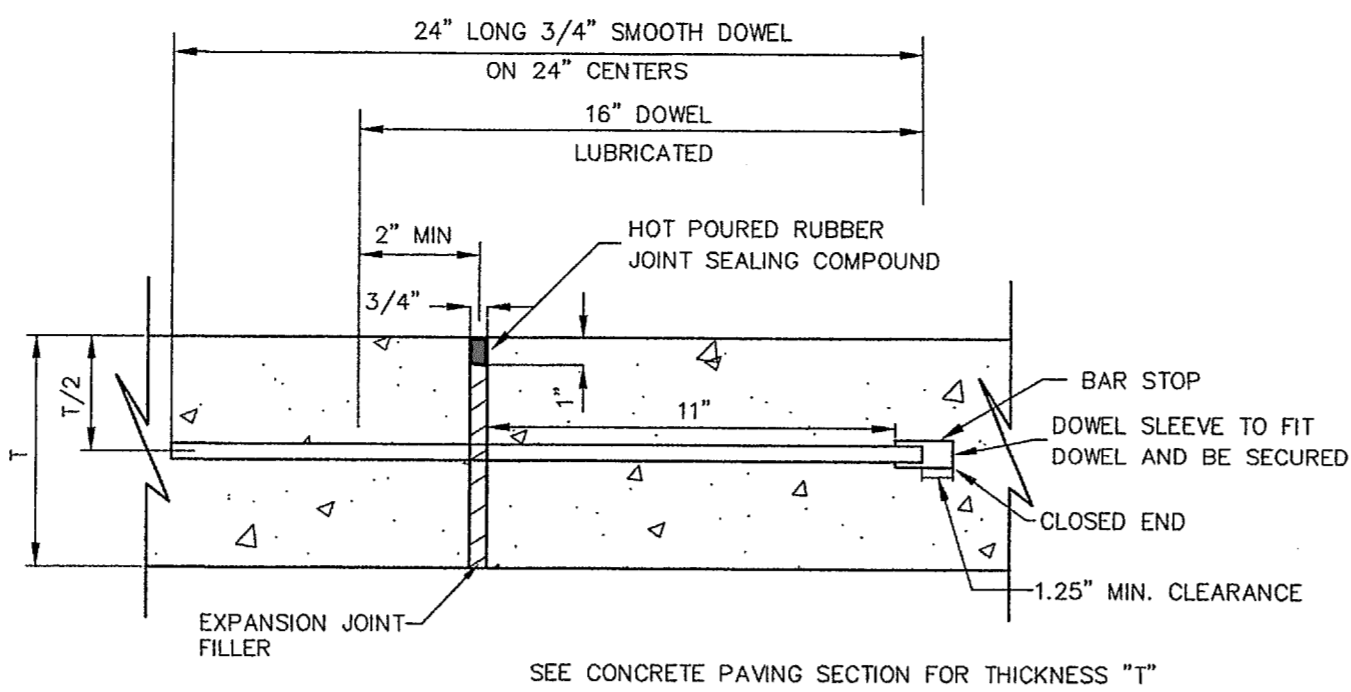
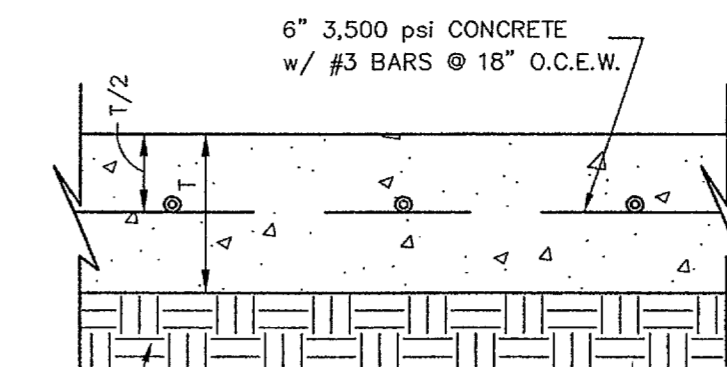


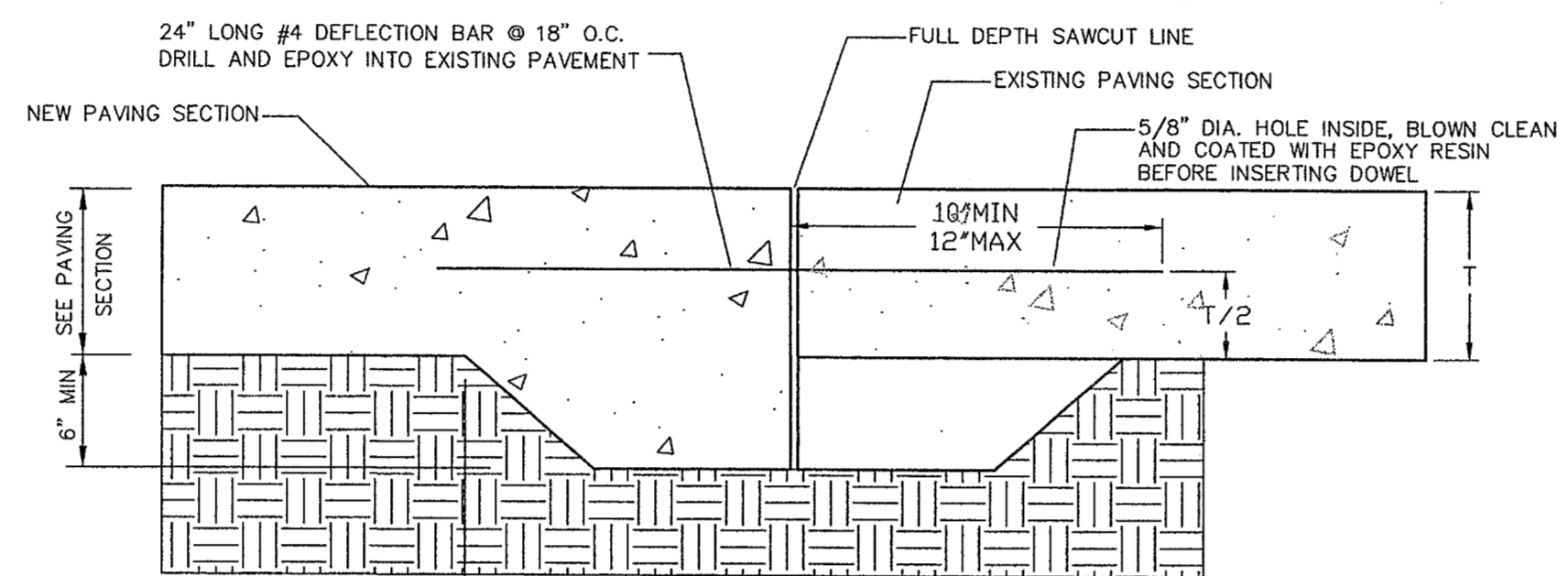
3B CONTROL JOINT
N.T.S.



3A EXPANSION JOINT DETAIL
N.T.S.



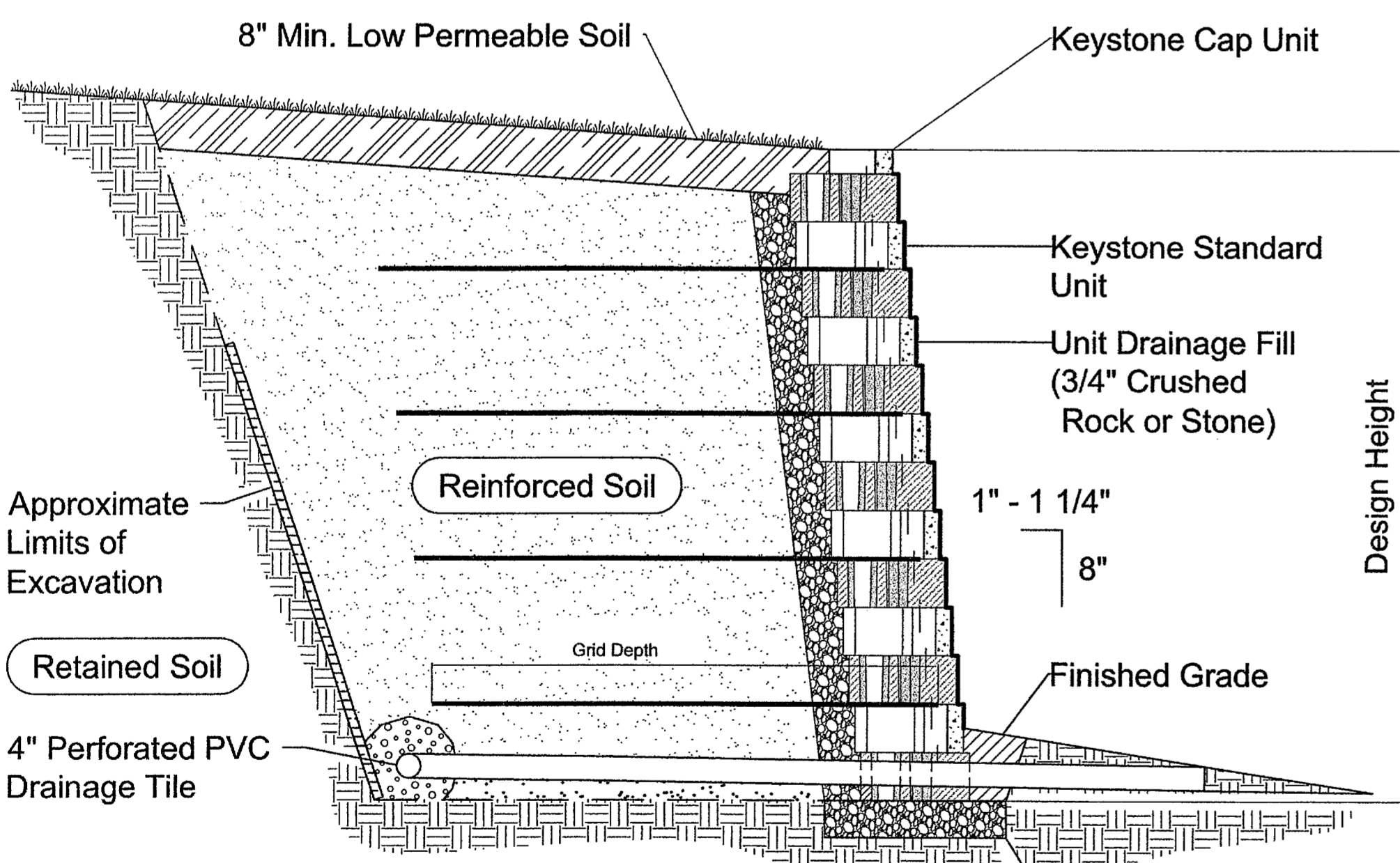
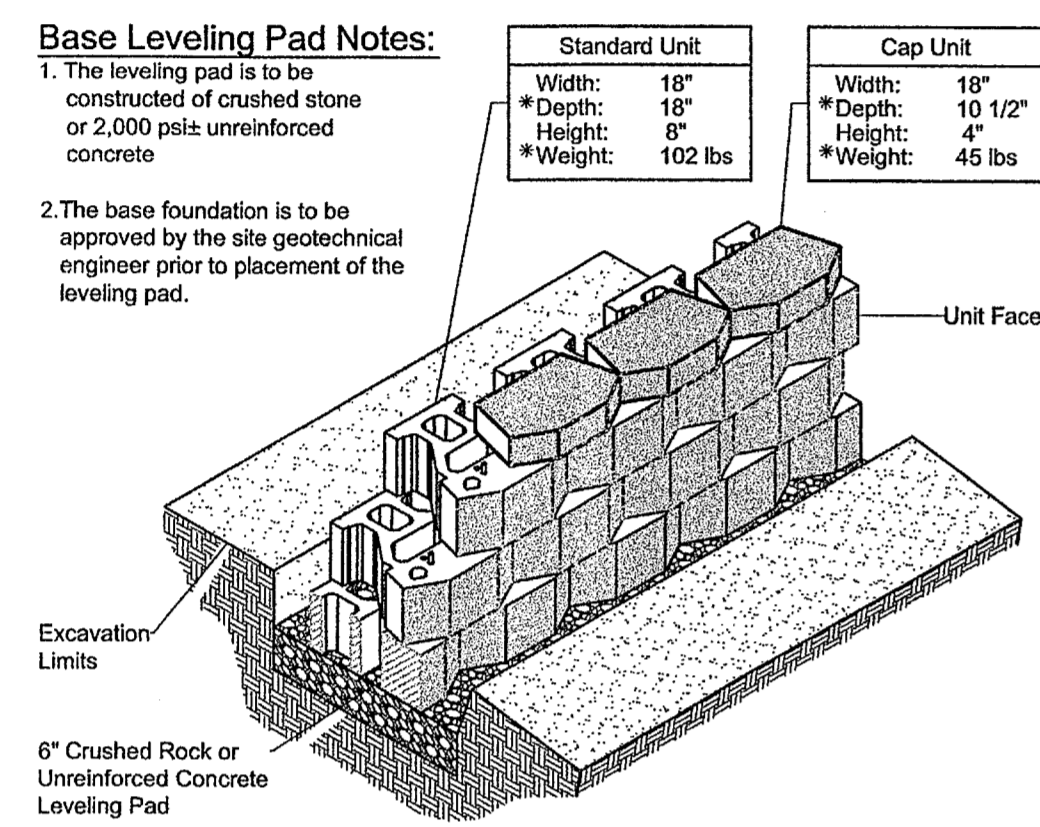
1C REINF. CONCRETE PAVING
N.T.S.



3D CONNECTION TO EXIST. CONCRETE PAVING
N.T.S.

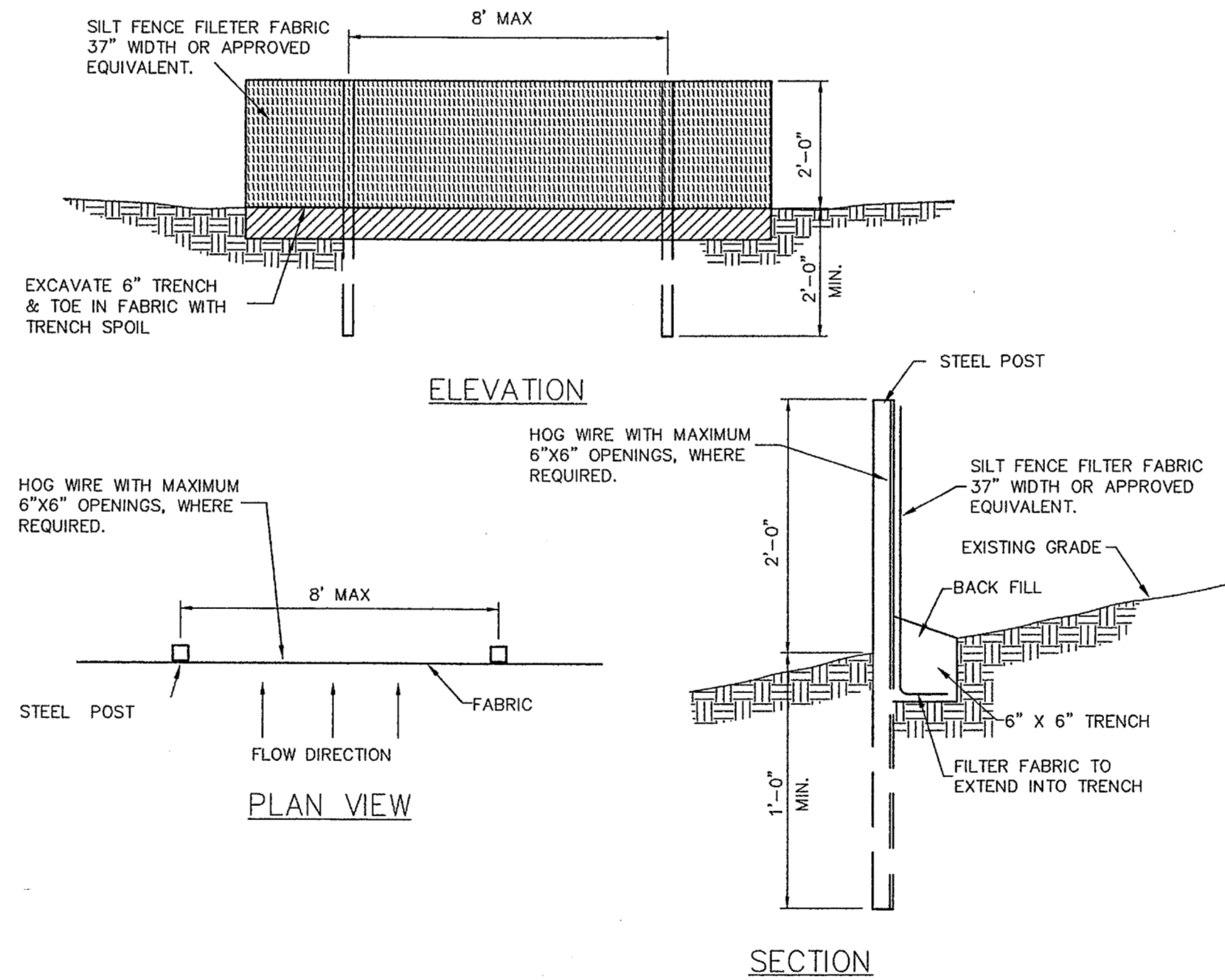
- PAVING NOTES:**
1. SUBGRADE TO BE MODIFIED WITH 6% HYDRATED LIME(DRY WEIGHT), IN ACCORDANCE WITH THE APPLICABLE PROVISION OF ITEM 260 OF THE LATEST TxDOT SPECIFICATIONS. SUBGRADE TO HAVE A PI OF 15 OR LESS.
 2. CONCRETE TO BE A MINIMUM OF 3,500 P.S.I. @ 28 DAYS.
 3. CONCRETE TO HAVE 5% (+/- 1%) AIR ENTRAINMENT
 4. CONTROL JOINTS TO BE PLACED AT A MINIMUM OF 15'.

1C CONCRETE PAVING SECTIONS
N.T.S.



Typical Reinforced Wall Section
Standard Unit - 1" Setback

Note:
When site conditions require, wrap drainage tile in 3/4" aggregate and filter fabric with drainage composite or aggregate back drain system, as directed by geotechnical engineer.

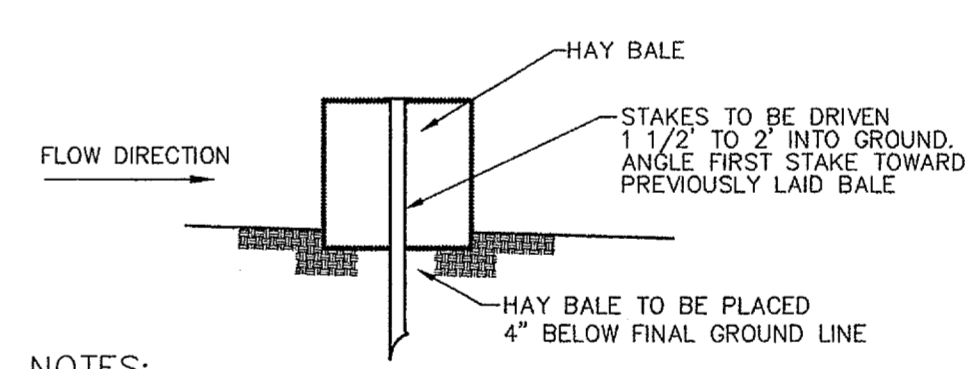


31A SILT FENCE DETAIL
N.T.S.

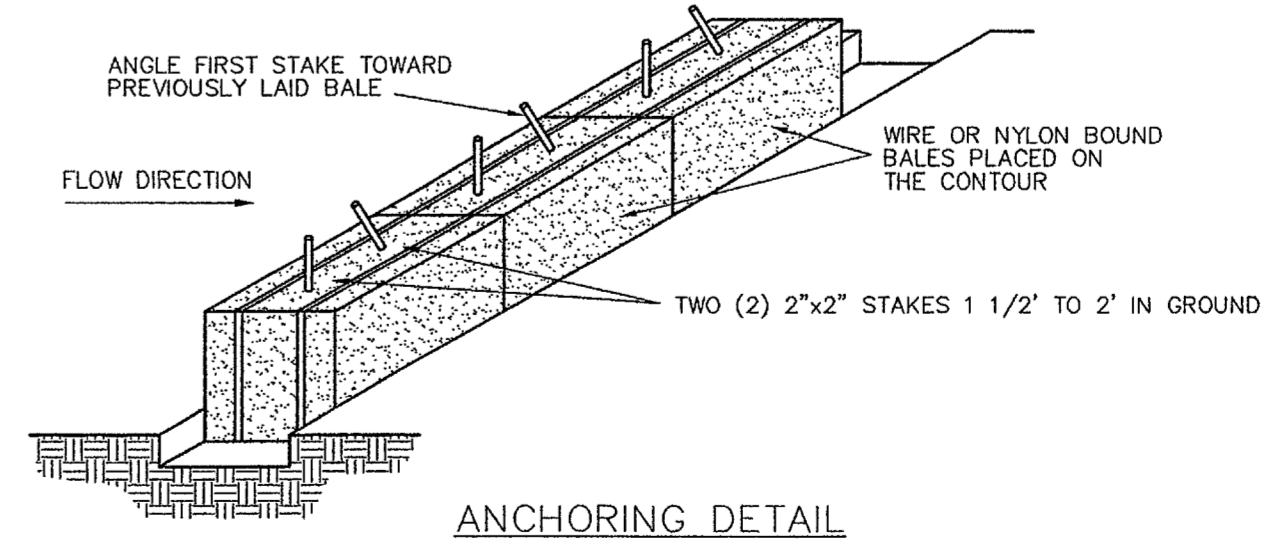


HAY BALE CHECK DAM DETAIL STORM SEWER CURB INLET
N.T.S.

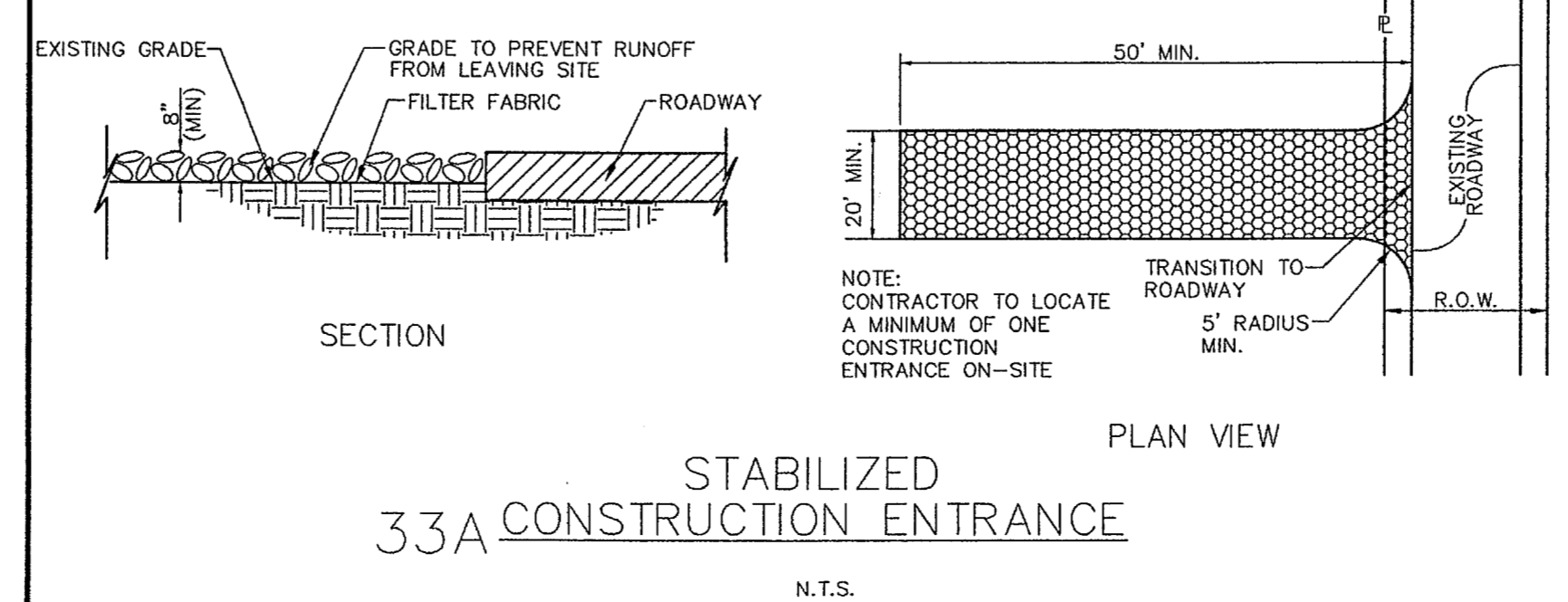
HAY BALE CHECK DAM DETAIL STORM SEWER GRATE INLET
N.T.S.



- NOTES:**
- 1 Bales shall be placed in a row with ends tightly abutting the adjacent bales.
 - 2 Each bale shall be embedded in the soil a minimum of 4".
 - 3 Bales shall be securely anchored in place by stakes or rebars driven through the bales. The first stake in each bale shall be angled toward previously laid bale to force bales together.
 - 4 Inspection shall be frequent and repair or replacement shall be made promptly as needed.
 - 5 Bales shall be removed when they have served their usefulness so as not to block or impede storm flow or drainage.



37C ALTERNATE - HAY BALE INSTALLATION DETAIL
N.T.S.



33A CONSTRUCTION ENTRANCE
N.T.S.

Engineer Information:
The Bousquet Group, Inc.
PO Box 545
Argyle, TX. 76226
940.455.2177
940.455.2254 fax

Texas Firm No. F-8942
Professional of Record:

Travis J. Bousquet
08/07/09

LOT 1B, MILLIKEN ADDITION
VICTOR MEYER CUSTOM HOMES, LLC
MICHAEL AND RACHEL HARDIN
14905 LAKE FOREST DRIVE
ADDISON, TEXAS

Revisions:

#	Date Issued:	Description:
-	-	-

Sheet Title:
DETAILS

Date: August 7, 2009
Project Number: 09015.0
Drawn By: TJB

Sheet Number:
C-4.0