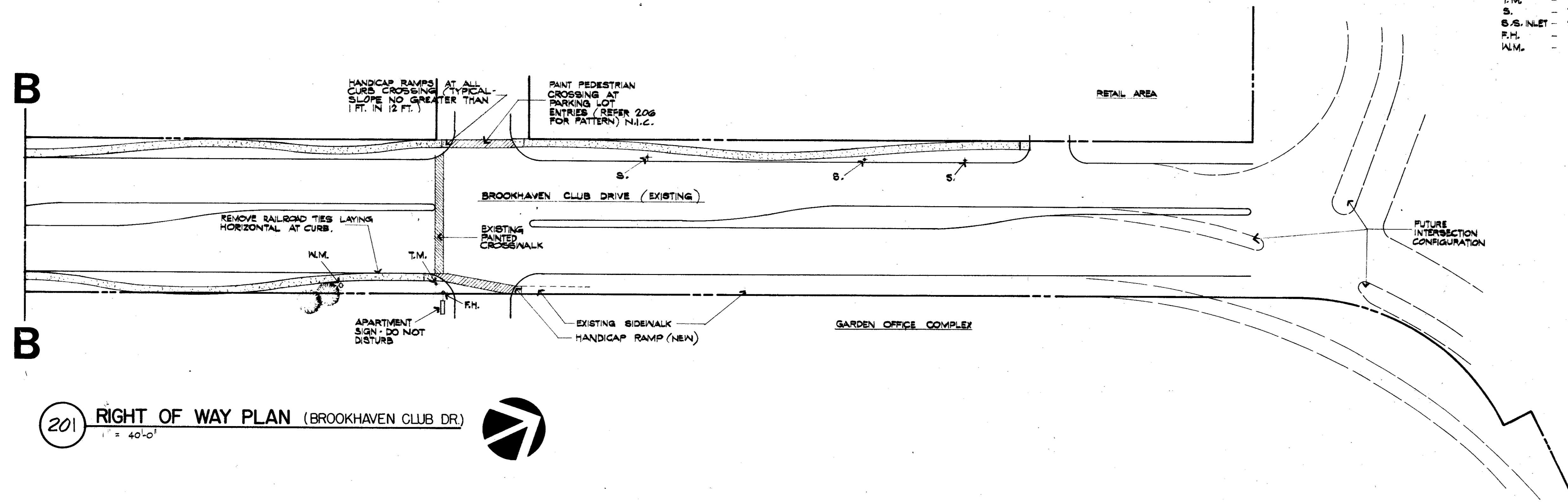
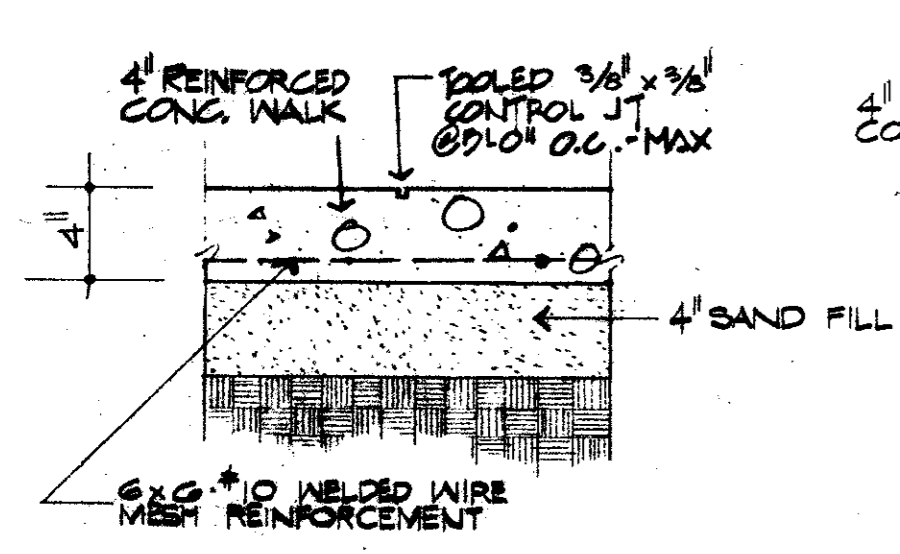


EDI CAPE HOPKINS CLEMENT, INC.
 PLANNING - ARCHITECTURE - INTERIOR DESIGN
 TWO NORTHPARK EAST, 120 · DALLAS · 214/750-1945
 AMERICAN INSTITUTE OF ARCHITECTS · AMER. SOC. CONSULTING PLANNERS

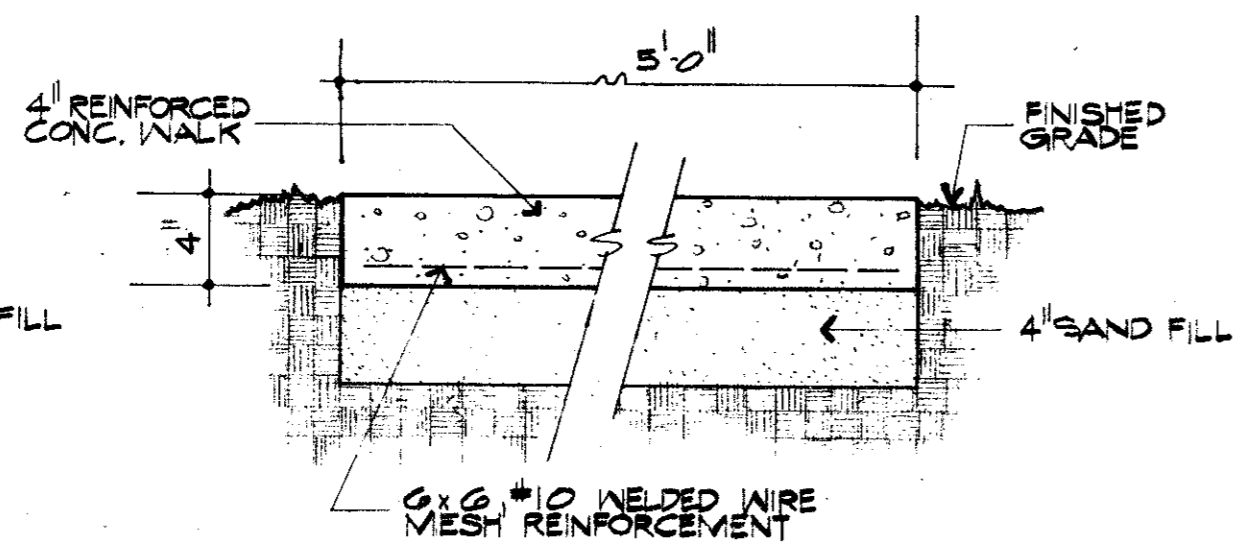
- LEGEND - EXISTING STREET RELATED EQUIPMENT**
- M.H. - MAN-HOLE
 - T.V. - TELEPHONE EQUIPMENT VAULT
 - T.M. - TELE. CABLE LOCATION MARKER
 - S. - TRAFFIC SIGNS
 - S.S. INLET - STORM SEWER INLET
 - F.H. - FIRE HYDRANT
 - W.M. - WATER METER



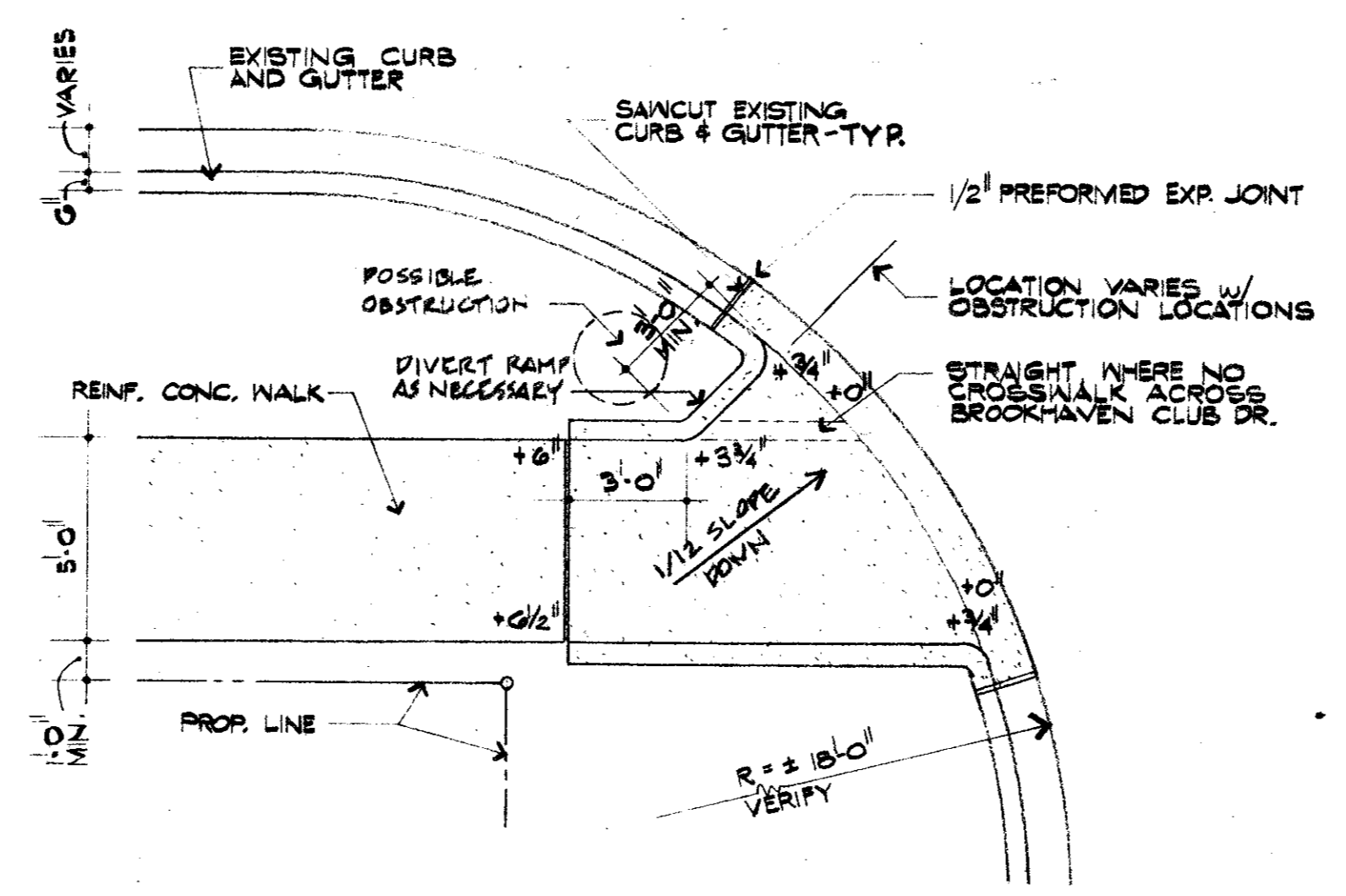
201 RIGHT OF WAY PLAN (BROOKHAVEN CLUB DR.)
 1" = 40'-0"



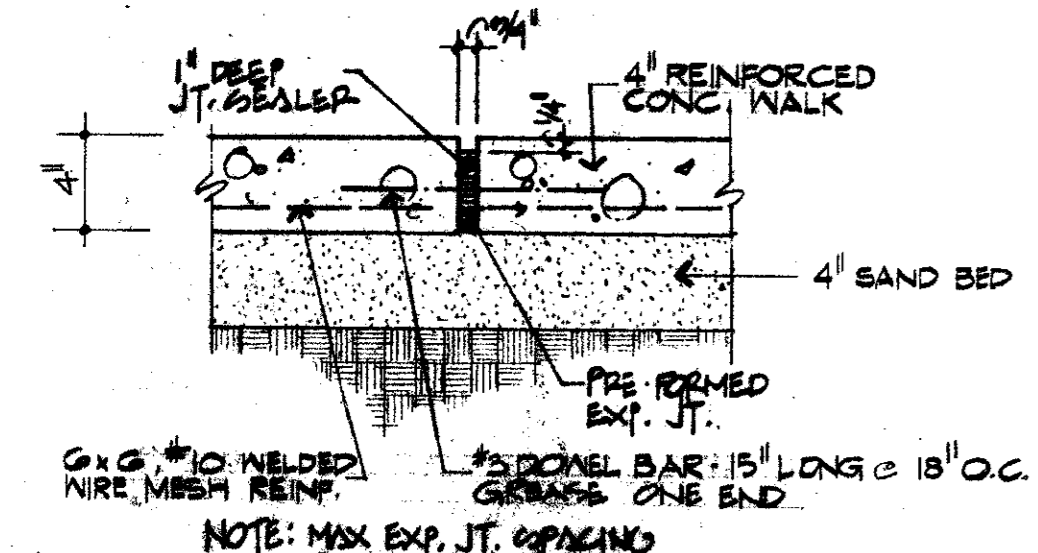
202 CONTROL JT.
 1/4" = 1'-0"



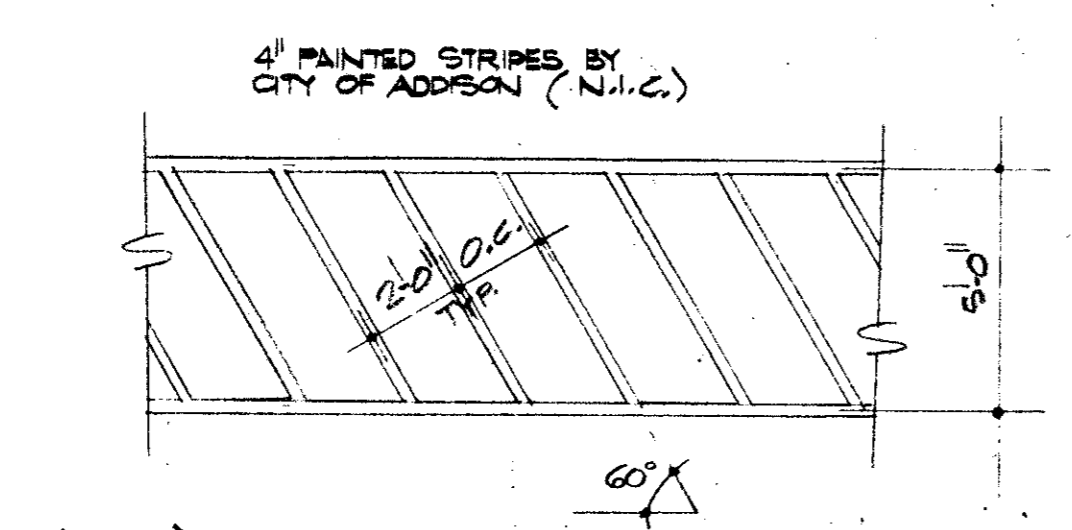
203 CROSS SECTION
 1/2" = 1'-2"



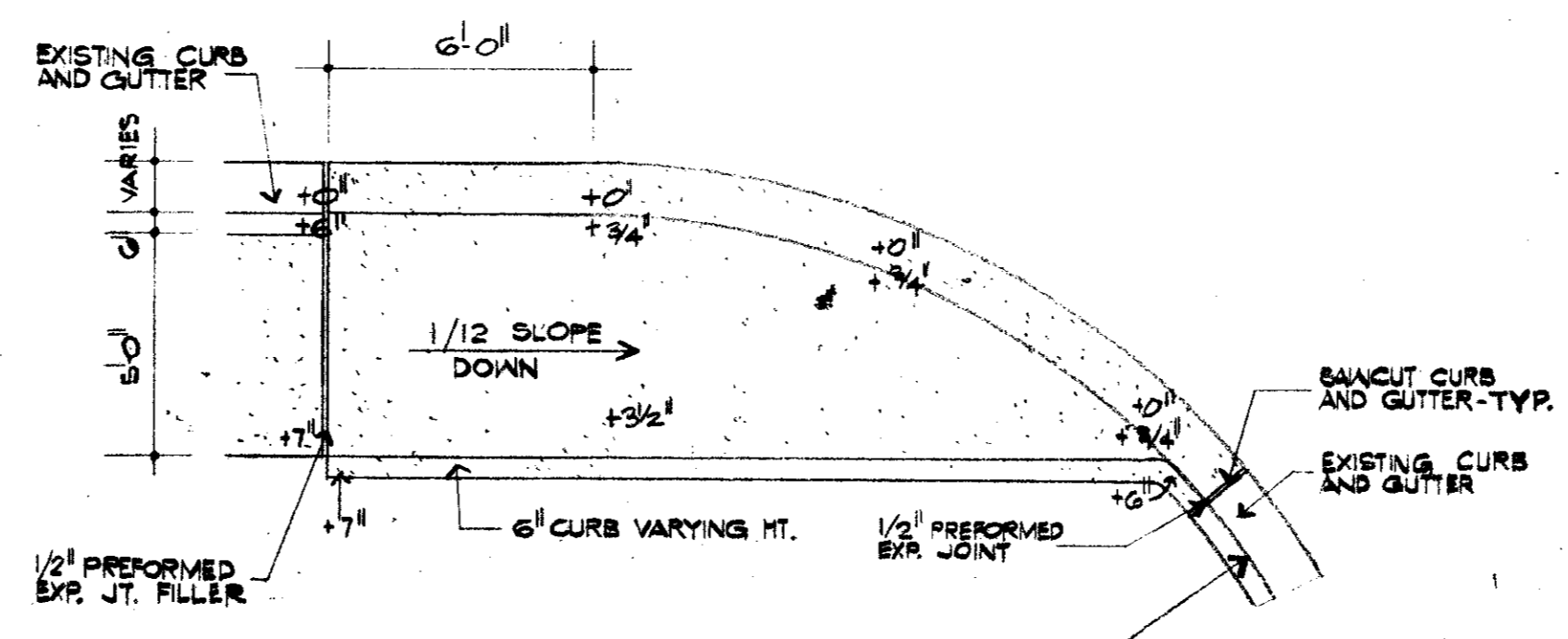
204 TYPICAL RAMP PLAN - TYPE A
 1/4" = 1'-0"



205 EXP. JOINT
 1/4" = 1'-0"



206 PEDESTRIAN CROSSING PAINT PATTERN
 (N.I.C.)
 1/4" = 1'-0"



207 TYPICAL RAMP PLAN - TYPE B
 1/4" = 1'-0"

Sidewalks for Brookhaven Club Drive
 Addison, Texas

ISSUE DATE	11/21/77
REVISIONS	

SHEET NUMBER
2