

BILLS OF REINFORCING STEEL - FOR 44' CLEAR WIDTH - BARRELS ONLY

Main table with columns for MARK, NUMBER, SIZE, SPACING, LENGTH, WEIGHT across various span configurations (2 SPANS, 3 SPANS, 4 SPANS, 5 SPANS, 6 SPANS) and heights (8'x4', 8'x5', 8'x6', 8'x7').

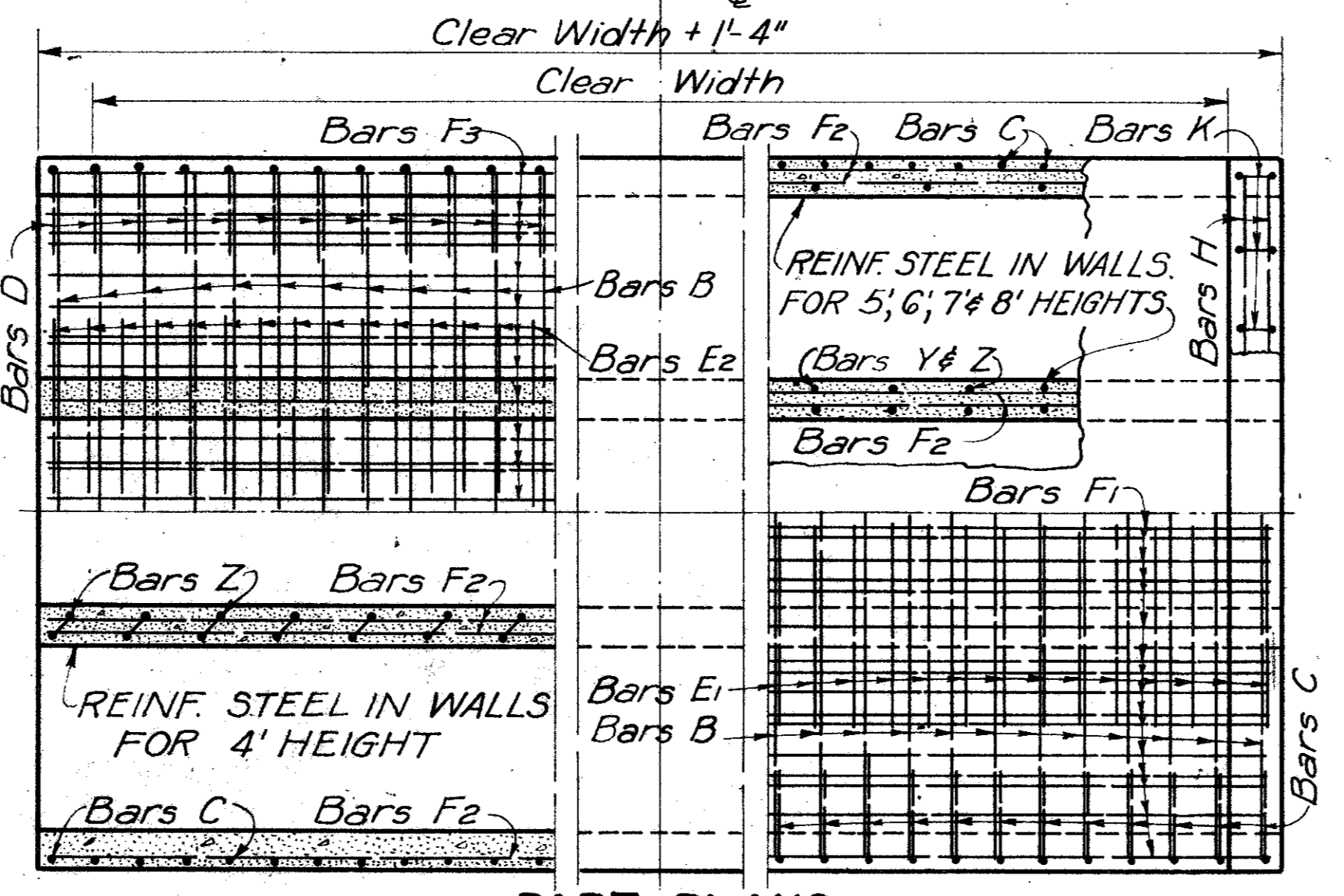
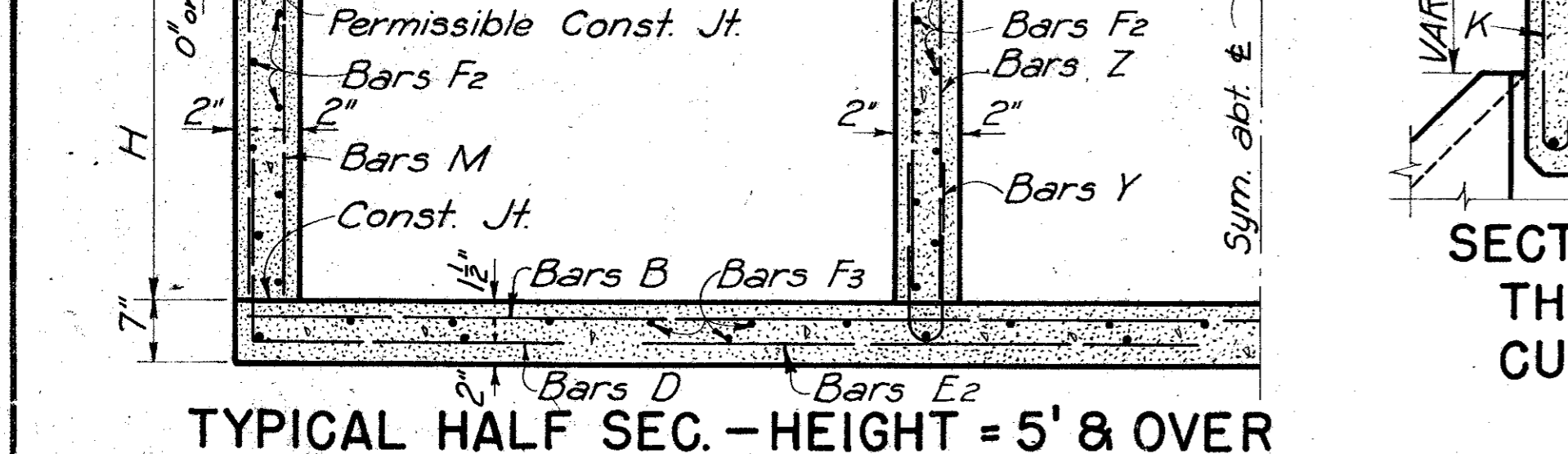
Table for 2 SPANS 8'x4' showing MARK, NUMBER, SIZE, SPACING, LENGTH, WEIGHT.

Table for 3 SPANS 8'x8' showing MARK, NUMBER, SIZE, SPACING, LENGTH, WEIGHT.

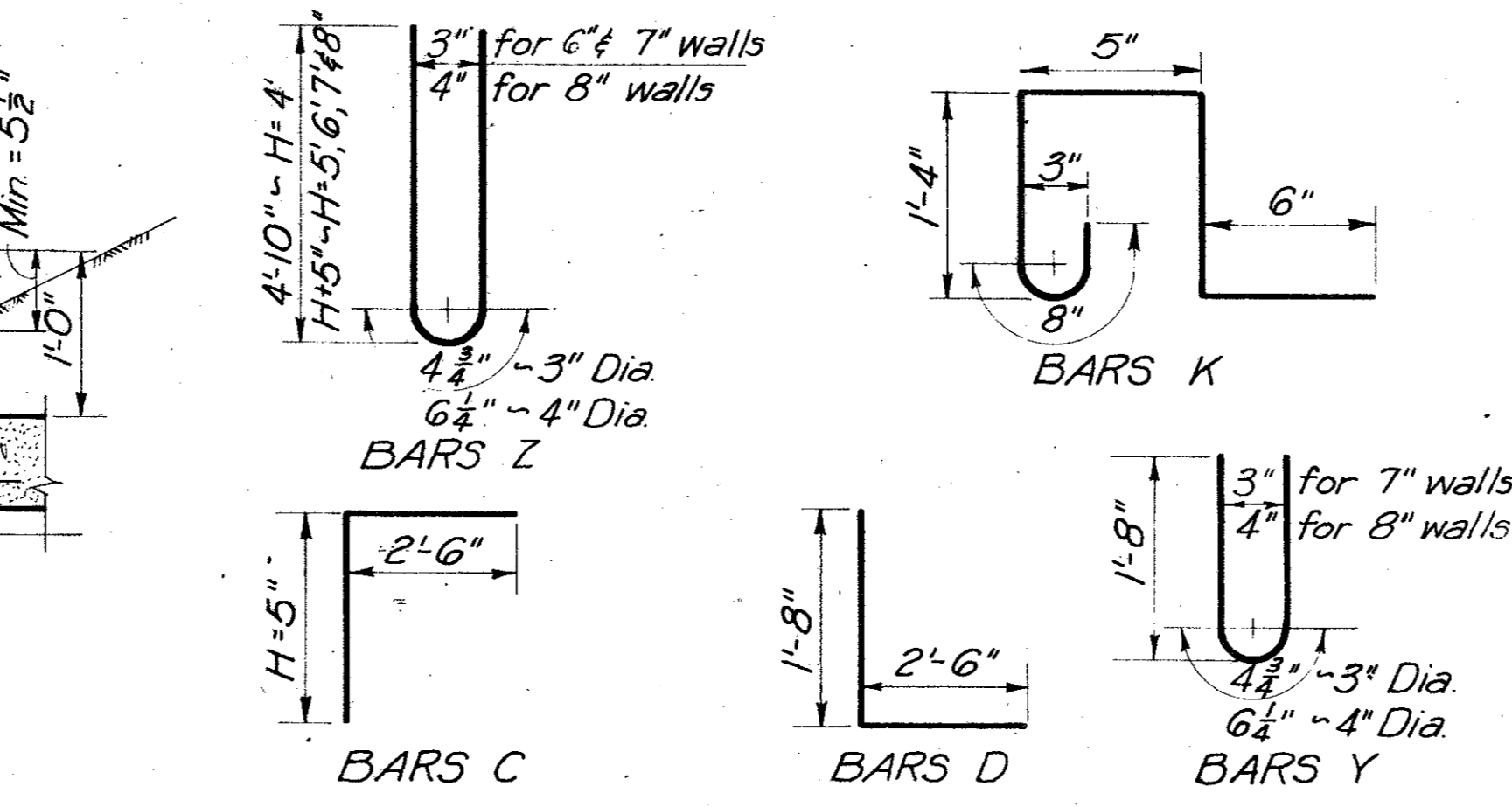
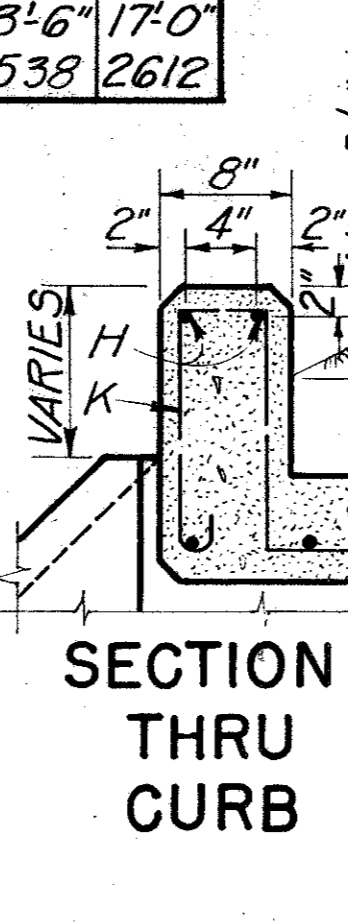
Table for 4 SPANS 8'x8' showing MARK, NUMBER, SIZE, SPACING, LENGTH, WEIGHT.

Table for 5 SPANS 8'x8' showing MARK, NUMBER, SIZE, SPACING, LENGTH, WEIGHT.

Table for 6 SPANS 8'x8' showing MARK, NUMBER, SIZE, SPACING, LENGTH, WEIGHT.



BOTTOM SLAB PART PLANS. TOP SLAB NOTE: TOP & BOTTOM SLAB REINF. STEEL SIMILAR FOR CULVERT SIZES SHOWN ON THIS SHEET.



BARREL QUANTITIES FOR 44' CLEAR WIDTH

Table with columns: CULV. SIZE, NO. OF SPANS, LENGTH OF STRUCT., *BARREL QUANTITIES (CONC., STEEL), QUANTITIES P.L.F. BBL. (CONC., STEEL).

GENERAL NOTES:- Design Loading: H-20- or H20 516- in accordance with A.A.S.H.O. 1957 Standard Specifications. All concrete shall be Class C. Chamfer exposed corners 1/4". All dimensions relating to reinforcing steel are to centers of bars. Quantities of reinforcing steel shown hereon are for 44'-0" clear width between headwalls. Construction Joint at the flow line may be raised a maximum of 6" at the contractor's option. Bars M may be cut off or raised, Bars C & D may be reversed (D on top) and bars Y & Z may be reversed (Y on top).

TEXAS HIGHWAY DEPARTMENT MULTIPLE BOX CULVERTS SIZES 8'x4', 8'x5', 8'x6', 8'x7' & 8'x8' 2'-1" TO 4'-0" FILL

MC8-2 drawing title block with revision history (Rev. 1959, 1964, 1967) and department information (DEPARTMENT OF PUBLIC WORKS, COUNTY OF DALLAS, TEXAS).

74 80