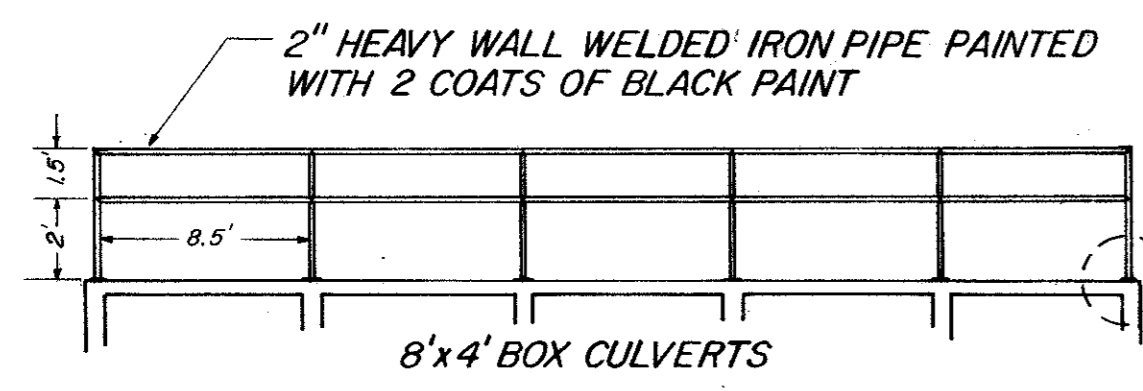
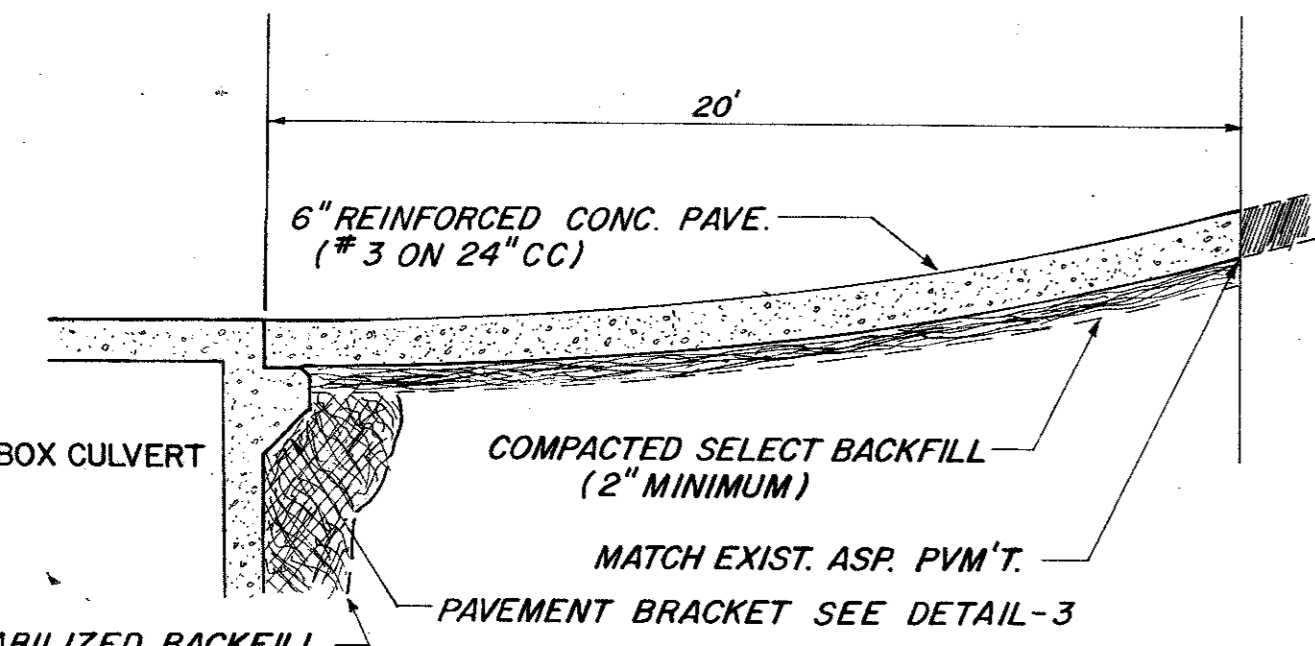


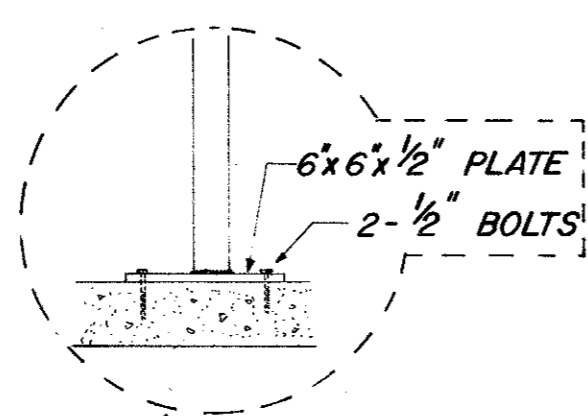
DETAIL-3



DETAIL-2  
(No Scale)

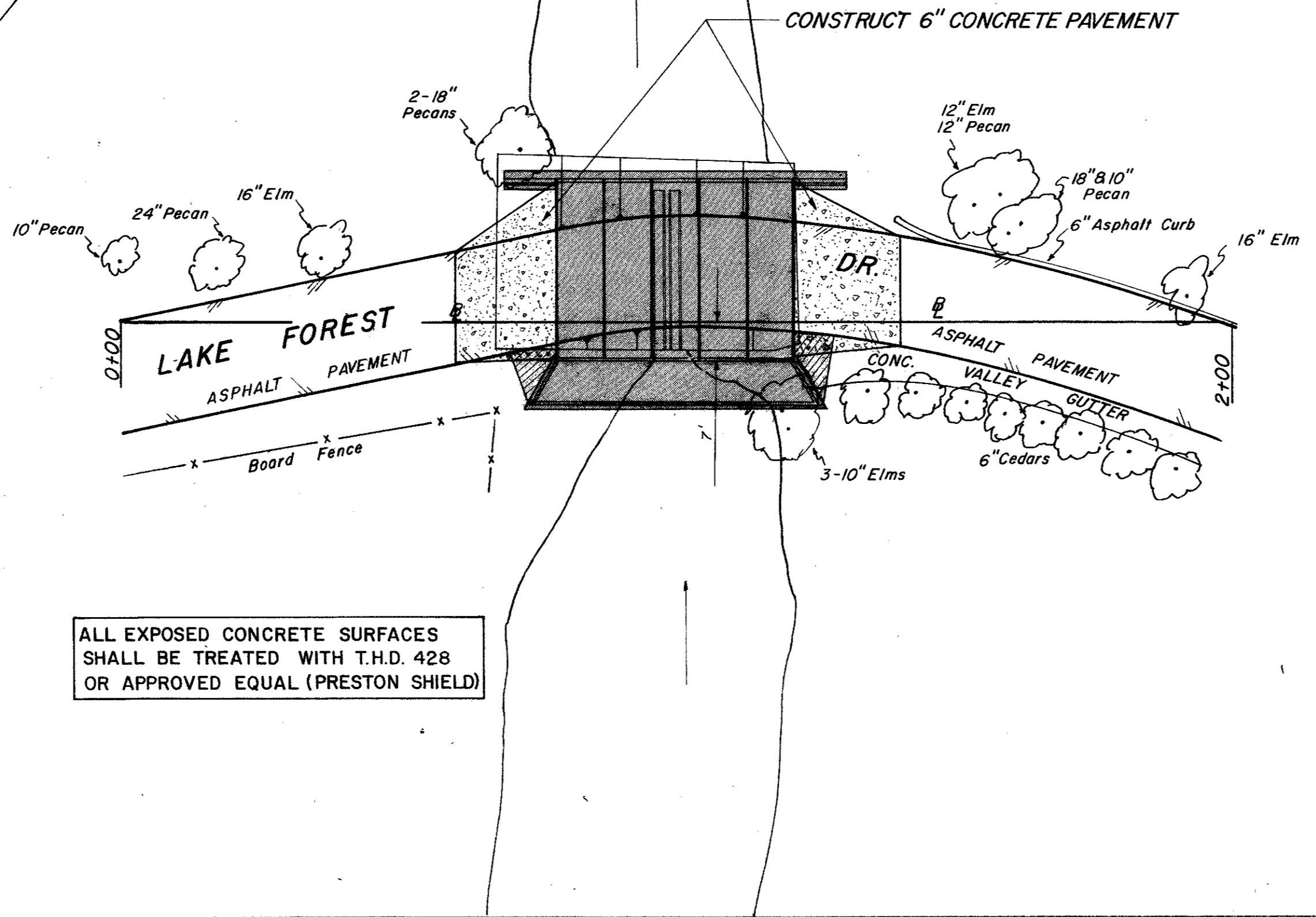
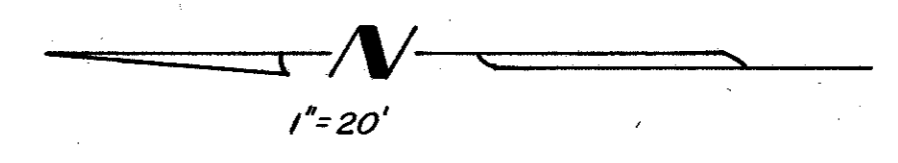


DETAIL-1  
(No Scale)

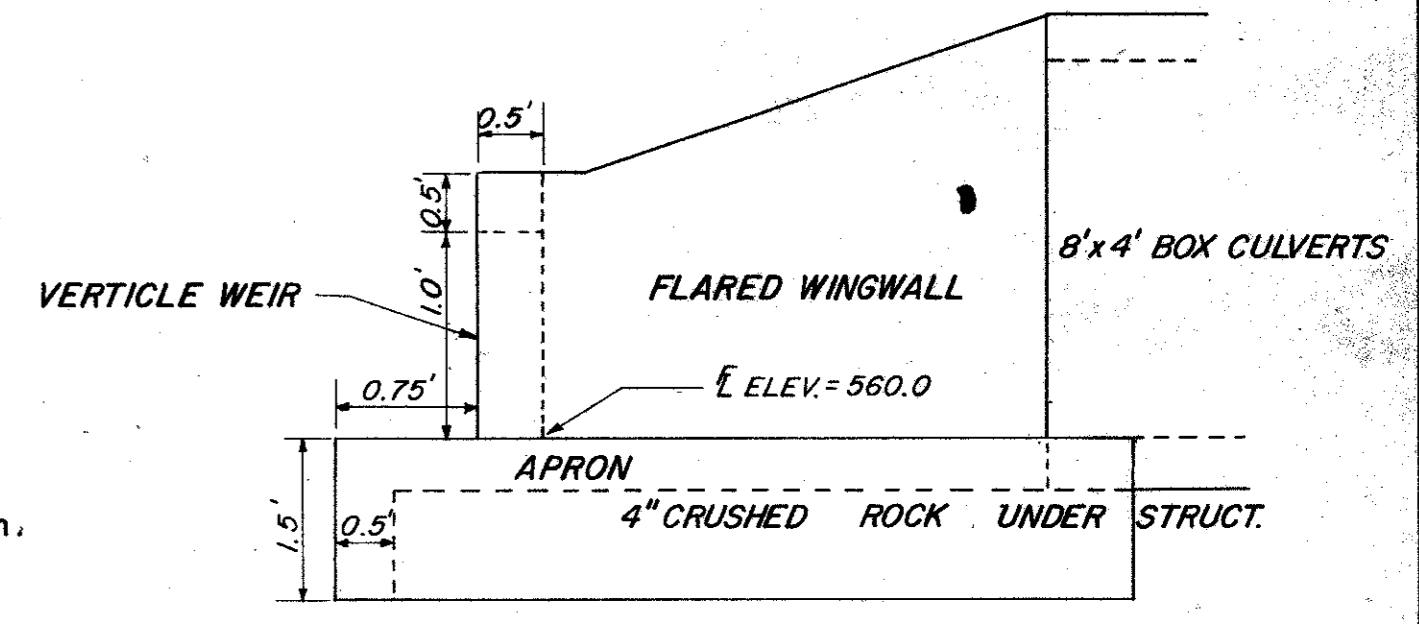


PRIOR TO WORKING ON LAKE FOREST, CONTRACTOR SHALL PERFORM THESE ITEMS:

1. Remove 10 joints of 24" R.C.P. and store at city facilities on Mildred Street.
2. Excavate below culverts to allow pond to drain completely. Channel width shall be approx. 30 feet.
3. Grade to drain to elevation 553.
4. Save all trees if possible



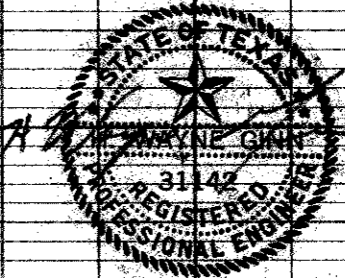
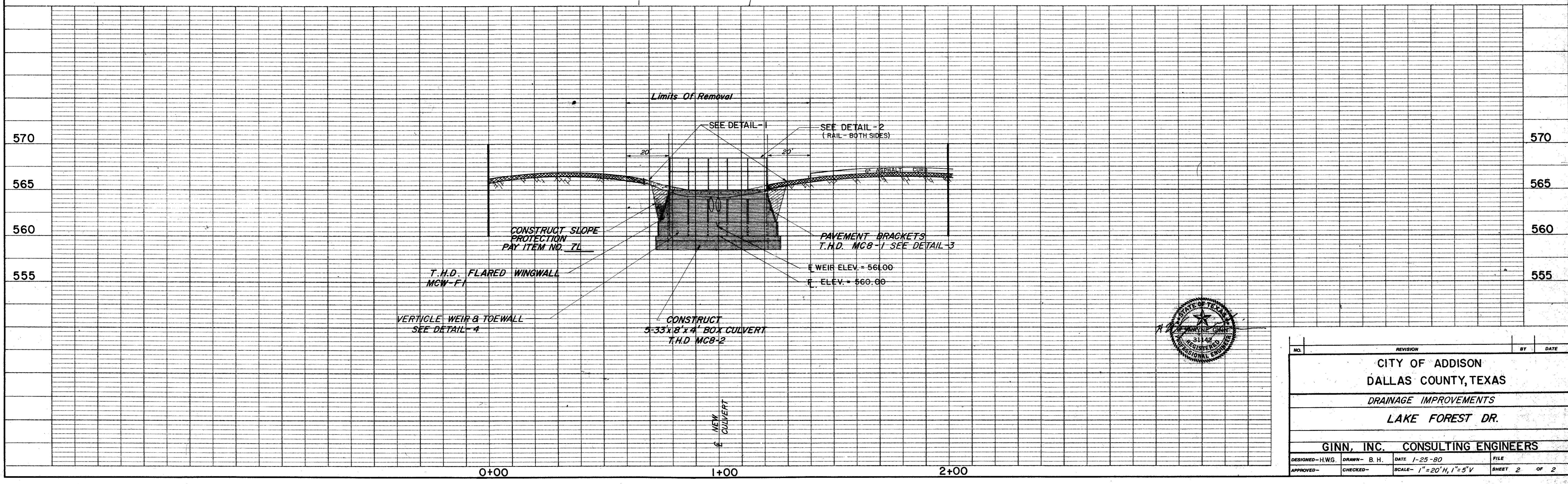
ALL EXPOSED CONCRETE SURFACES SHALL BE TREATED WITH T.H.D. 428 OR APPROVED EQUAL (PRESTON SHIELD)



DETAIL-4  
(No Scale)

NOTES:

1. See sh.1 for utility location.
2. See sh.1 for quantities.



NO.	REVISION	BY	DATE
CITY OF ADDISON DALLAS COUNTY, TEXAS DRAINAGE IMPROVEMENTS LAKE FOREST DR.			
GINN, INC. CONSULTING ENGINEERS			
DESIGNED-HWG	DRAWN-B.H.	DATE 1-25-80	FILE
APPROVED-	CHECKED-	SCALE- 1"=20'H, 1"=5'V	SHEET 2 OF 2