

STREET WILL BE CLOSED DURING CONSTRUCTION

FINISH FLOOR ELEV. = 567.26

FINISH FLOOR ELEV. = 564.56

FINISH FLOOR ELEV. = 569.70

FINISH FLOOR ELEV. = 565.25

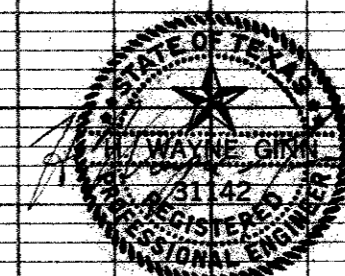
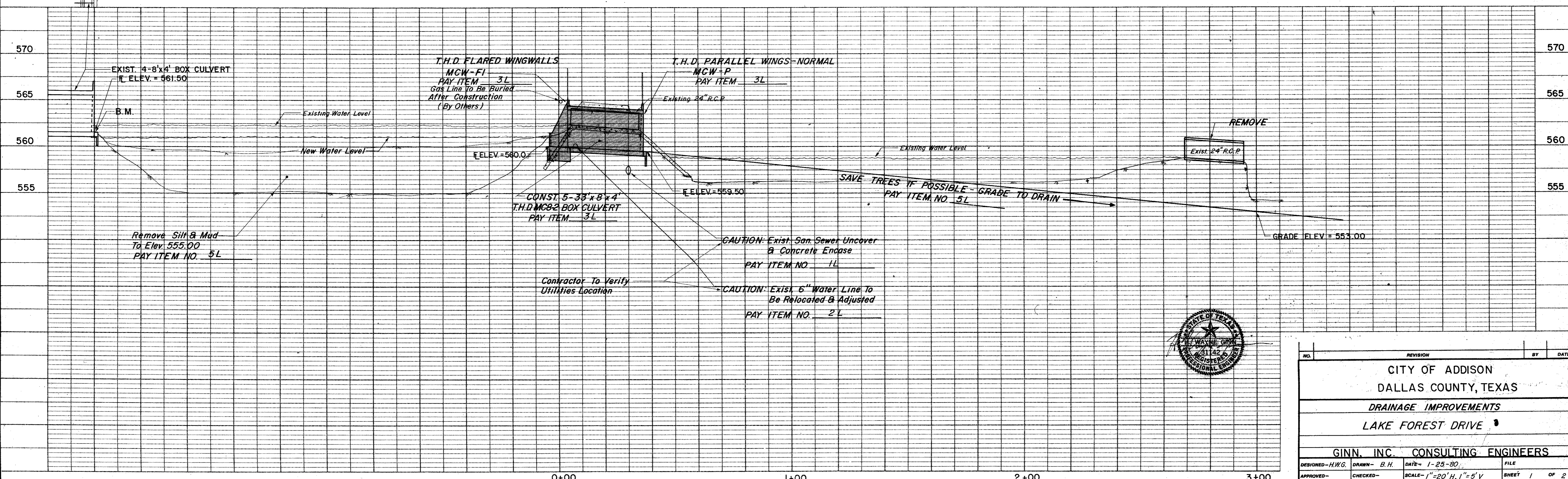
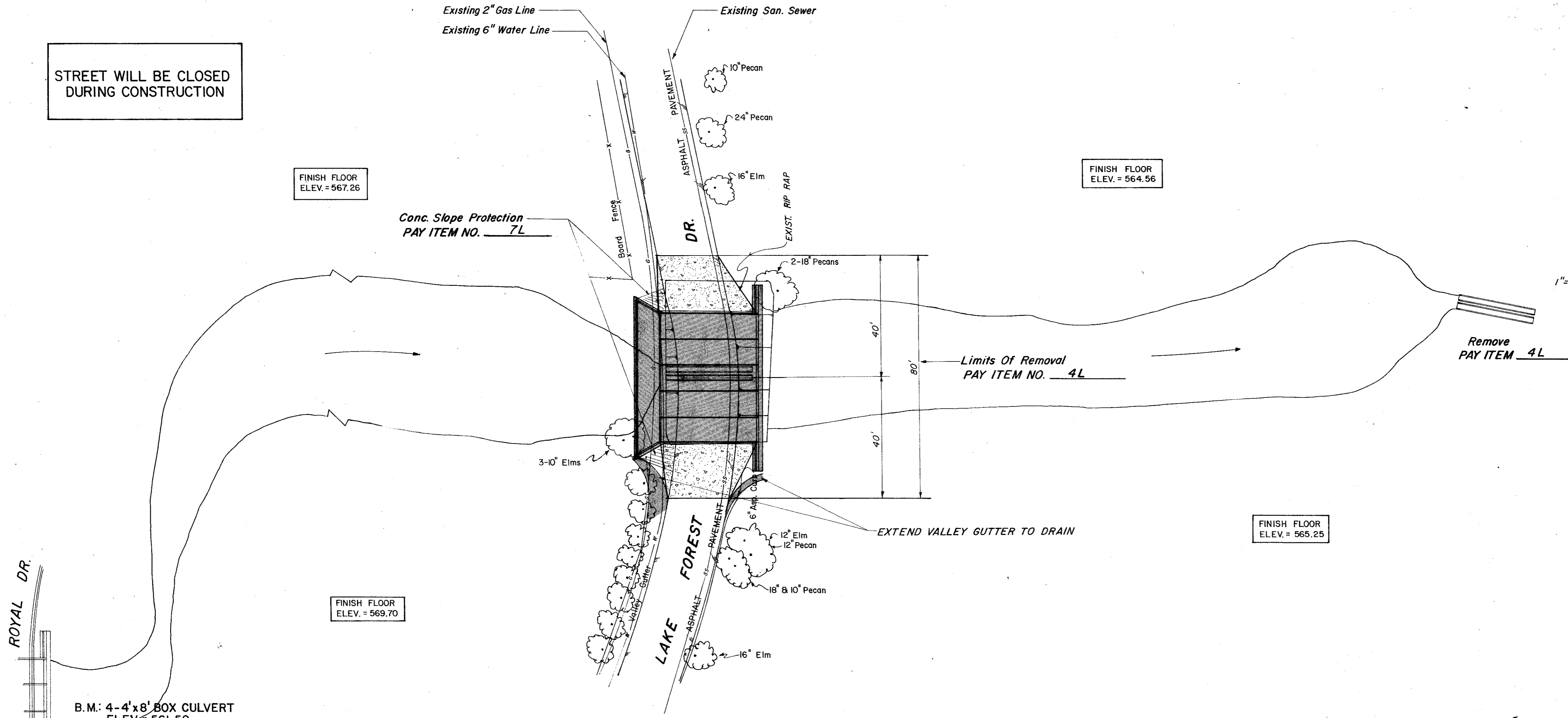
B.M.: 4-4'x8' BOX CULVERT ELEV. = 561.50

ESTIMATED QUANTITIES			
ITEM	DESCRIPTION	UNIT	QUANTITY
1L	CONCRETE ENCASE 8" SEWER	L.S.	1
2L	ADJUST 6" W.L.	L.S.	1
3L	BOX CULVERT 8 RAILS W/HEADWALL	L.S.	1
4L	REMOVE EXISTING CULVERT	L.S.	1
5L	HOURLY RATE/CHANNEL EXCAV.	HRS.	1
6L	CONCRETE PAVEMENT	S.Y.	150
7L	CONCRETE SLOPE PROTECTION	C.Y.	5

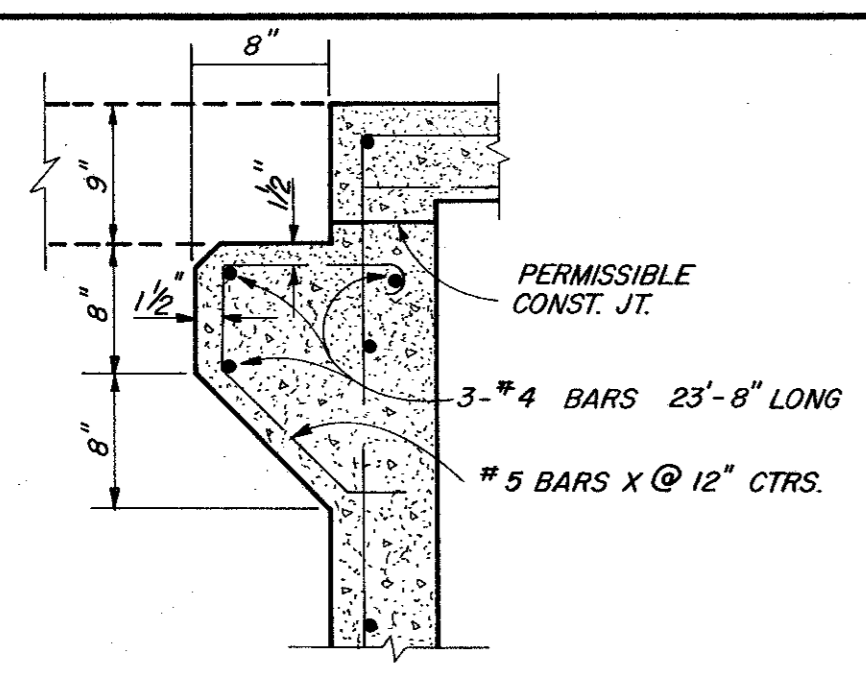
ESTIMATED QUANTITIES				
DESCRIPTION	SPAN	LENGTH OF STRUCT.	CONC. C.Y.	STEEL LBS.
8'x4' BOX CULVERT	5	33'	75	10,960
TOEWALL / UPSTREAM	—	—	1.14	83
FLARED WINGWALL	—	—	2.17	232.5
VERTICAL WEIR	—	—	1.43	153
APRON / UPSTREAM	—	—	6.41	685
PAVING BRACKET	—	—	1.64	364
PARALLEL WINGS-NORM.	—	—	7.40	846

LEGEND

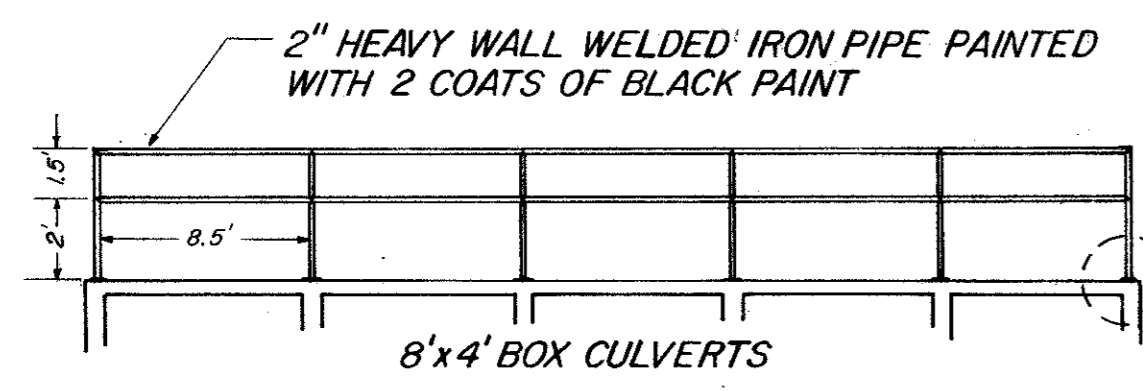
- Bench Mark
- ⊕ Hub and Tack
- ⊕ Iron Pin
- ⊕ Monument
- ⊕ O.M.W.
- ⊕ Gas Valve
- ⊕ Gas Line
- ⊕ Power Pole (typical pole symbol)
- ⊕ Power Line
- ⊕ Guy Wire and Anchor
- ⊕ Telephone Cable Box or Riser
- ⊕ Telephone Line
- ⊕ Water Meter
- ⊕ Water Valve
- ⊕ Water Line
- ⊕ Fire Hydrant
- ⊕ Water Sump
- ⊕ Manhole
- ⊕ Catchment
- ⊕ Drainage Inlet
- ⊕ Storm Sewer Line
- ⊕ Sanitary Sewer Line
- ⊕ Storm Sewer Line
- ⊕ Flow Line
- ⊕ Flow Direction Indicator
- ⊕ Property or Right-of-Way Line
- ⊕ Easement Line



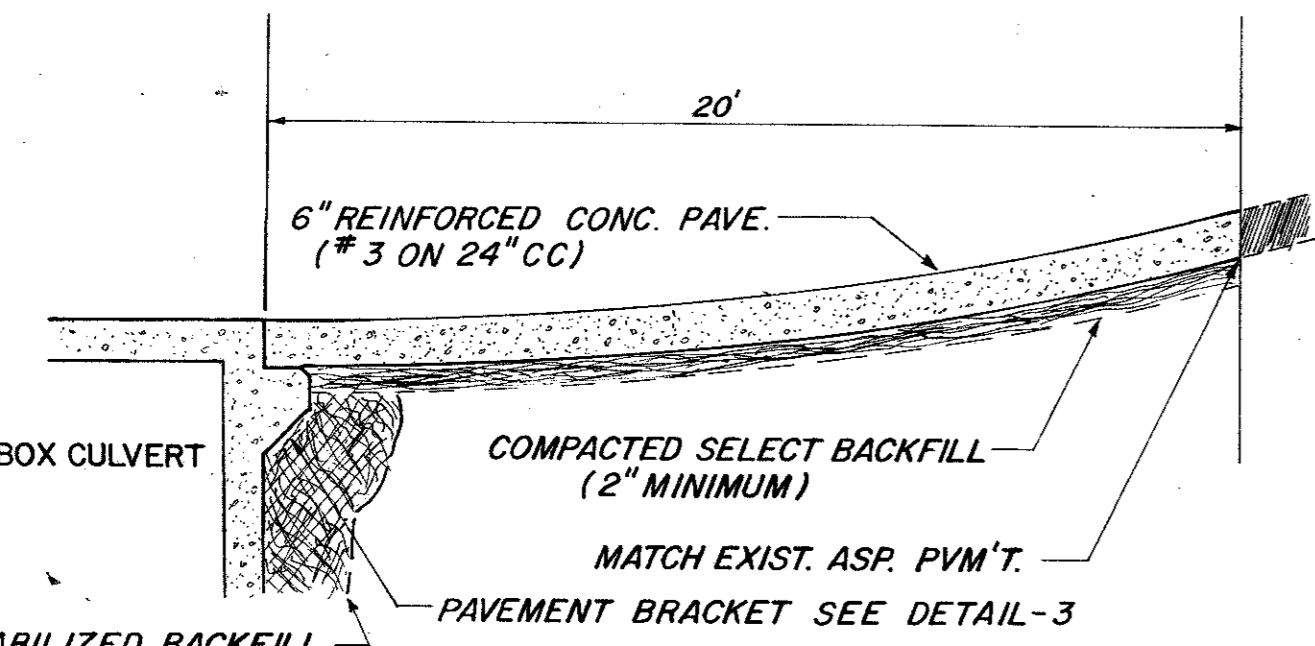
NO.	REVISION	BY	DATE
CITY OF ADDISON DALLAS COUNTY, TEXAS DRAINAGE IMPROVEMENTS LAKE FOREST DRIVE GINN, INC. CONSULTING ENGINEERS DESIGNED-H.W.G. DRAWN-B.H. DATE-1-25-80 FILE APPROVED-CHECKED-SCALE-1"=20'H, 1"=5'V SHEET 1 OF 2			



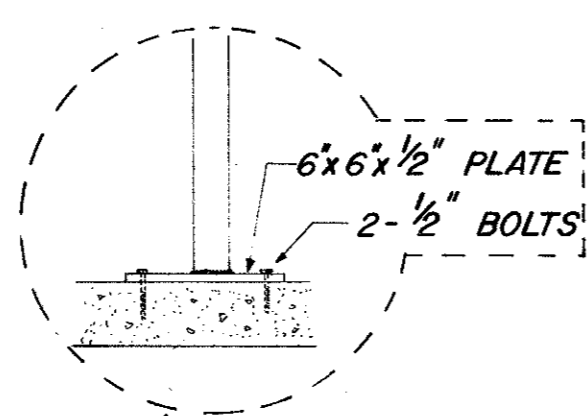
DETAIL-3



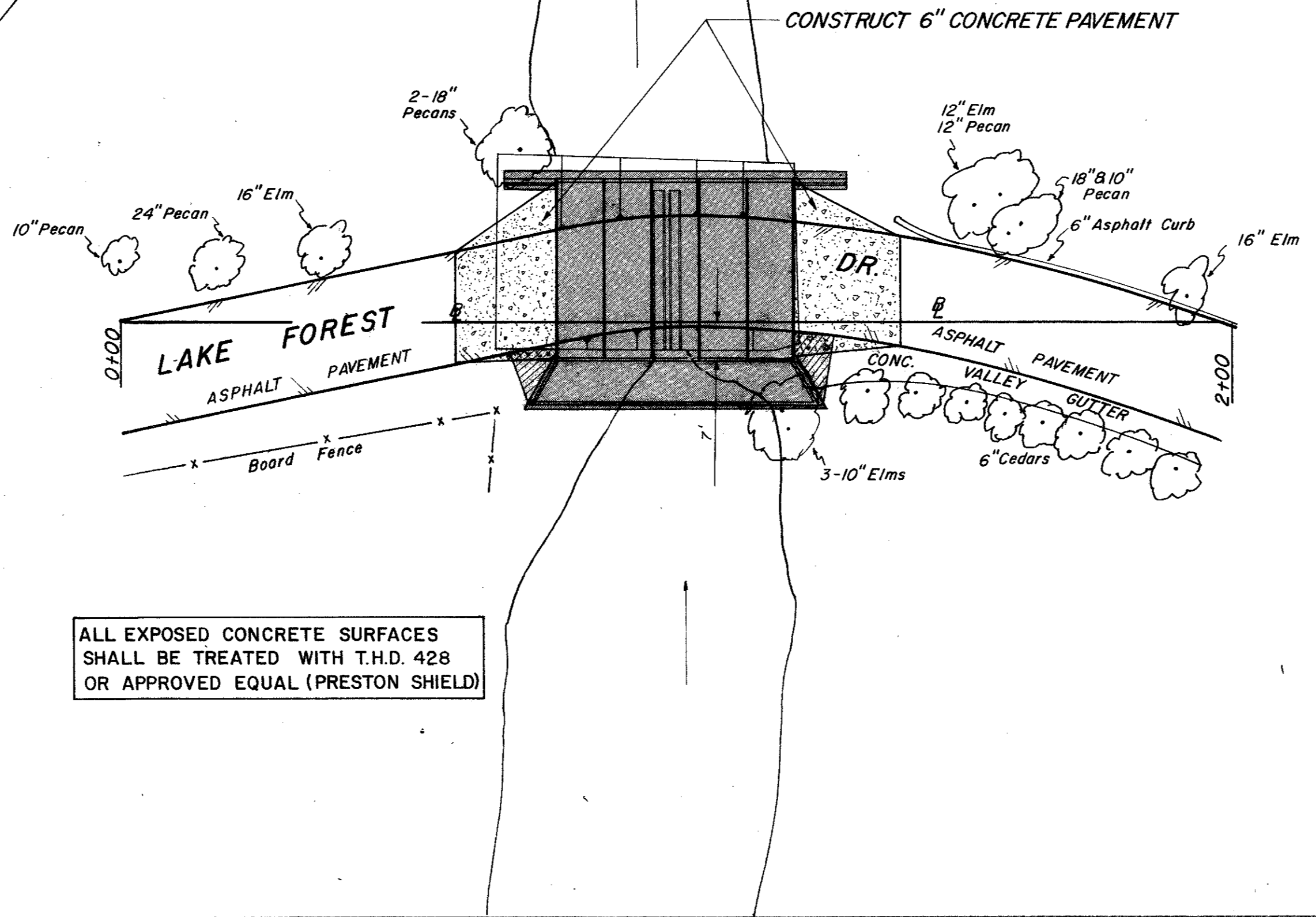
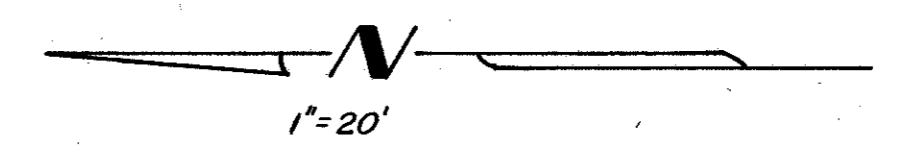
DETAIL-2
(No Scale)



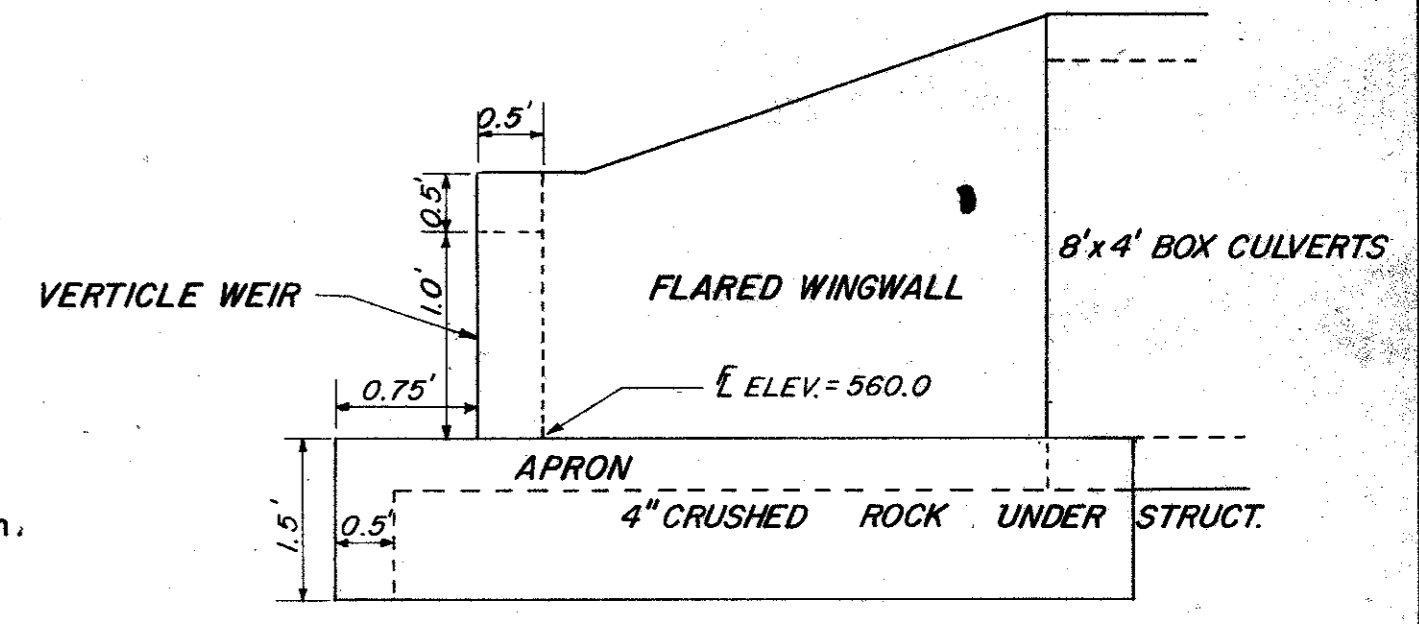
DETAIL-1
(No Scale)



PRIOR TO WORKING ON LAKE FOREST, CONTRACTOR SHALL PERFORM THESE ITEMS:
 1. Remove 10 joints of 24" R.C.P. and store at city facilities on Mildred Street.
 2. Excavate below culverts to allow pond to drain completely. Channel width shall be approx. 30 feet.
 3. Grade to drain to elevation 553.
 4. Save all trees if possible



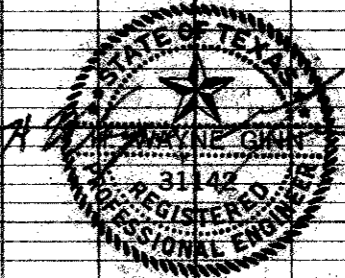
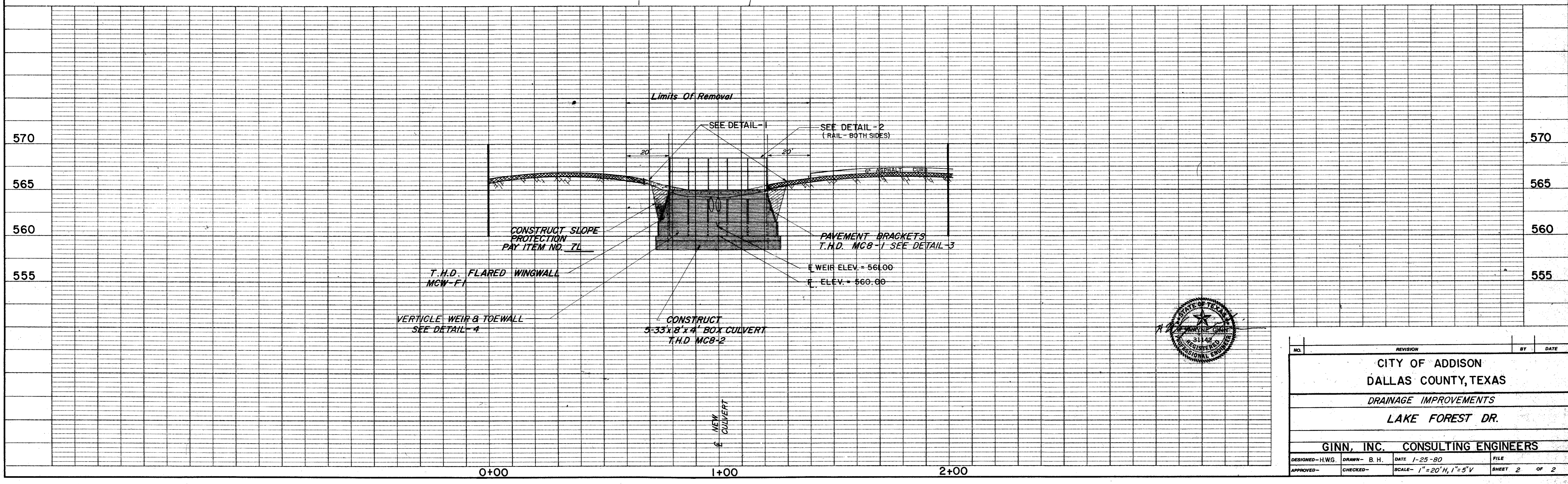
ALL EXPOSED CONCRETE SURFACES SHALL BE TREATED WITH T.H.D. 428 OR APPROVED EQUAL (PRESTON SHIELD)



DETAIL-4
(No Scale)

NOTES:

1. See sh.1 for utility location.
2. See sh.1 for quantities.



NO.	REVISION	BY	DATE
CITY OF ADDISON DALLAS COUNTY, TEXAS DRAINAGE IMPROVEMENTS LAKE FOREST DR.			
GINN, INC. CONSULTING ENGINEERS			
DESIGNED - HWG	DRAWN - B.H.	DATE 1-25-80	FILE
APPROVED -	CHECKED -	SCALE - 1" = 20' H, 1" = 5' V	SHEET 2 OF 2