

STREET WILL BE CLOSED DURING CONSTRUCTION

FINISH FLOOR  
ELEV. = 567.26

FINISH FLOOR  
ELEV. = 564.56

FINISH FLOOR  
ELEV. = 569.70

FINISH FLOOR  
ELEV. = 565.25

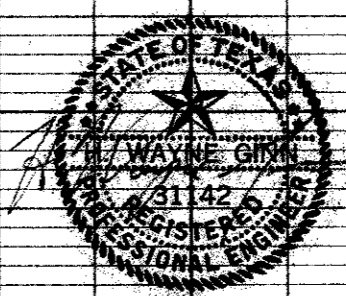
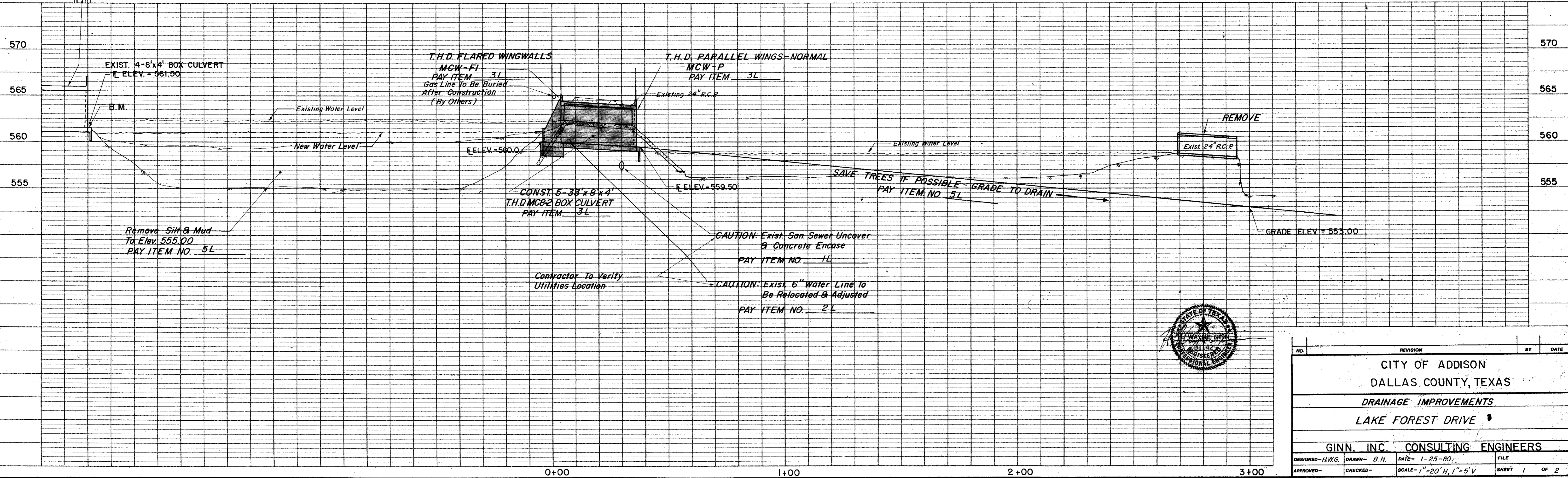
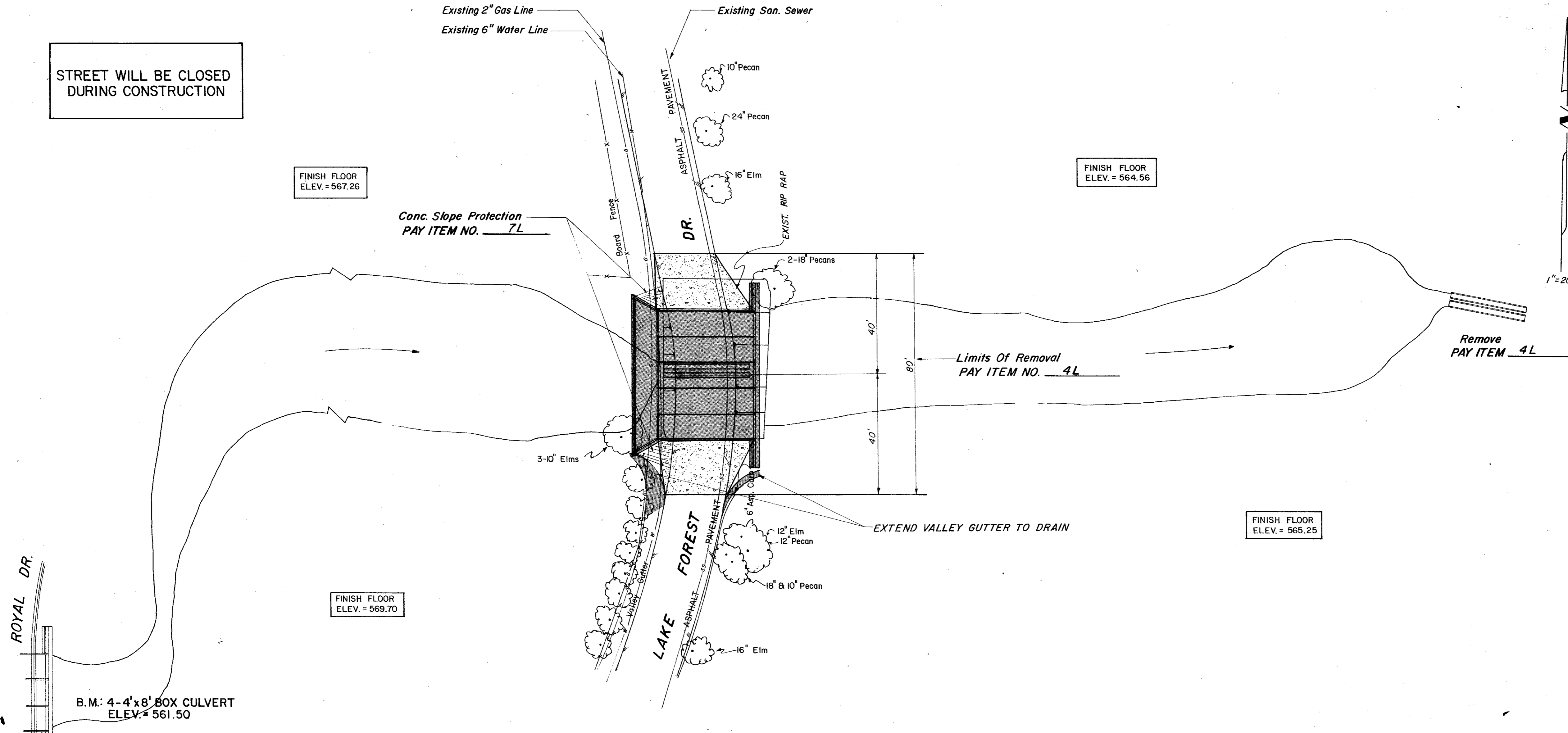
B.M.: 4-4'x8' BOX CULVERT  
ELEV. = 561.50

ESTIMATED QUANTITIES			
ITEM	DESCRIPTION	UNIT	QUANTITY
1L	CONCRETE ENCASE 8" SEWER	L.S.	1
2L	ADJUST 6" W.L.	L.S.	1
3L	BOX CULVERT & RAILS W/HEADWALL	L.S.	1
4L	REMOVE EXISTING CULVERT	L.S.	1
5L	HOURLY RATE/CHANNEL EXCAV.	HRS.	1
6L	CONCRETE PAVEMENT	S.Y.	150
7L	CONCRETE SLOPE PROTECTION	C.Y.	5

ESTIMATED QUANTITIES				
DESCRIPTION	SPAN	LENGTH OF STRUCT.	CONC. C.Y.	STEEL LBS.
8'x4' BOX CULVERT	5	33'	75	10,960
TOEWALL / UPSTREAM	—	—	1.14	83
FLARED WINGWALL	—	—	2.17	232.5
VERTICAL WEIR	—	—	1.43	153
APRON / UPSTREAM	—	—	6.41	685
PAVING BRACKET	—	—	1.64	364
PARALLEL WINGS-NORM.	—	—	7.40	846

**LEGEND**

- Bench Mark
- ⊕ Hub and Tack
- ⊕ Iron Pin
- ⊕ Monument
- ⊕ Gas Meter
- ⊕ Gas Valve
- ⊕ Gas Line
- ⊕ Power Pole (typical pole symbol)
- ⊕ Power Line
- ⊕ Guy Wire and Anchor
- ⊕ Telephone Cable Box or Riser
- ⊕ Telephone Line
- ⊕ Water Meter
- ⊕ Water Valve
- ⊕ Water Line
- ⊕ Fire Hydrant
- ⊕ Water Sump
- ⊕ Manhole
- ⊕ Catchment
- ⊕ Drainage Inlet
- ⊕ Storm Sewer Line
- ⊕ Sanitary Sewer Line
- ⊕ Storm Sewer Line
- ⊕ Flow Line
- ⊕ Flow Direction Indicator
- ⊕ Property or Right-of-Way Line
- ⊕ Easement Line



NO.	REVISION	BY	DATE
CITY OF ADDISON DALLAS COUNTY, TEXAS <b>DRAINAGE IMPROVEMENTS</b> LAKE FOREST DRIVE			
<b>GINN, INC. CONSULTING ENGINEERS</b>			
DESIGNED-H.W.G.	DRAWN-B.H.	DATE-1-25-80	FILE
APPROVED-	CHECKED-	SCALE-1"=20'H, 1"=5'V	SHEET 1 OF 2