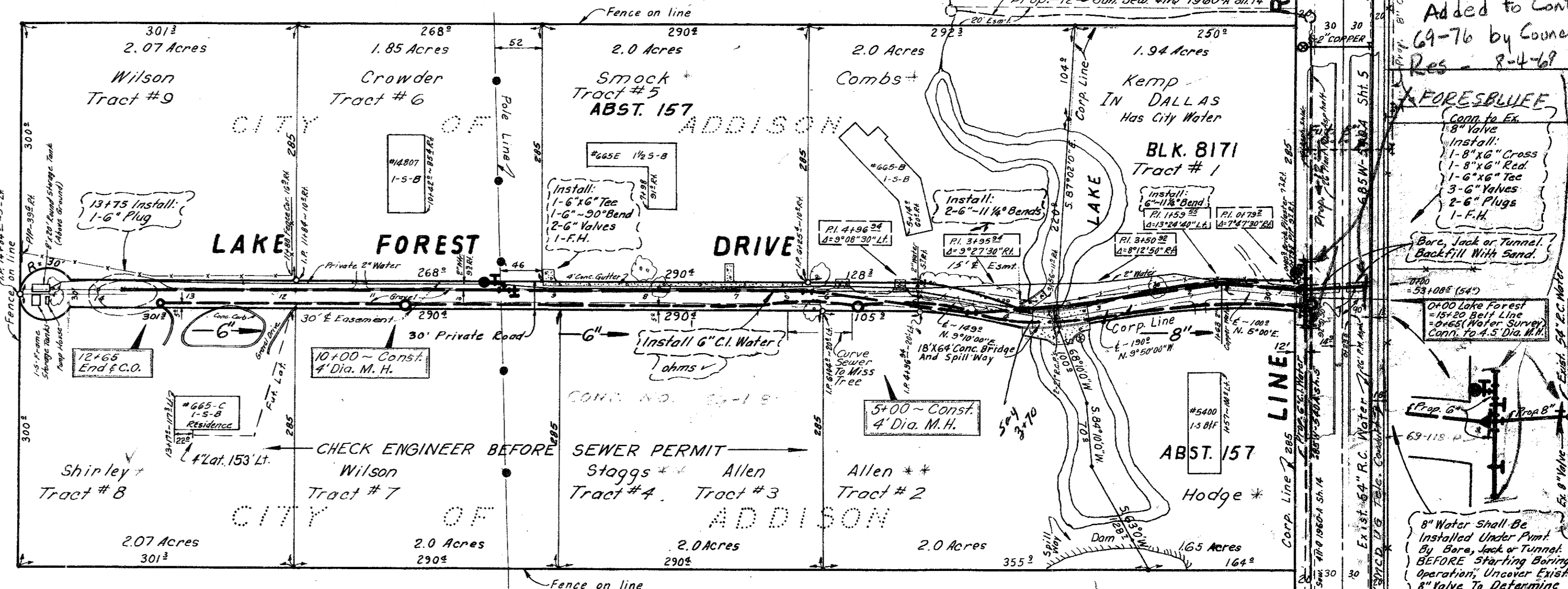


STATION	LT. RT.	DESCRIPTION
4148		1/4" 6" C. Water
4149		1/4" 6" C. Water
4150		1/4" 6" C. Water
4151		1/4" 6" C. Water
4152		1/4" 6" C. Water
4153		1/4" 6" C. Water
4154		1/4" 6" C. Water
4155		1/4" 6" C. Water
4156		1/4" 6" C. Water
4157		1/4" 6" C. Water
4158		1/4" 6" C. Water
4159		1/4" 6" C. Water
4160		1/4" 6" C. Water
4161		1/4" 6" C. Water
4162		1/4" 6" C. Water
4163		1/4" 6" C. Water
4164		1/4" 6" C. Water
4165		1/4" 6" C. Water
4166		1/4" 6" C. Water
4167		1/4" 6" C. Water
4168		1/4" 6" C. Water
4169		1/4" 6" C. Water
4170		1/4" 6" C. Water
4171		1/4" 6" C. Water
4172		1/4" 6" C. Water
4173		1/4" 6" C. Water
4174		1/4" 6" C. Water
4175		1/4" 6" C. Water
4176		1/4" 6" C. Water
4177		1/4" 6" C. Water
4178		1/4" 6" C. Water
4179		1/4" 6" C. Water
4180		1/4" 6" C. Water
4181		1/4" 6" C. Water
4182		1/4" 6" C. Water
4183		1/4" 6" C. Water
4184		1/4" 6" C. Water
4185		1/4" 6" C. Water
4186		1/4" 6" C. Water
4187		1/4" 6" C. Water
4188		1/4" 6" C. Water
4189		1/4" 6" C. Water
4190		1/4" 6" C. Water
4191		1/4" 6" C. Water
4192		1/4" 6" C. Water
4193		1/4" 6" C. Water
4194		1/4" 6" C. Water
4195		1/4" 6" C. Water
4196		1/4" 6" C. Water
4197		1/4" 6" C. Water
4198		1/4" 6" C. Water
4199		1/4" 6" C. Water
4200		1/4" 6" C. Water

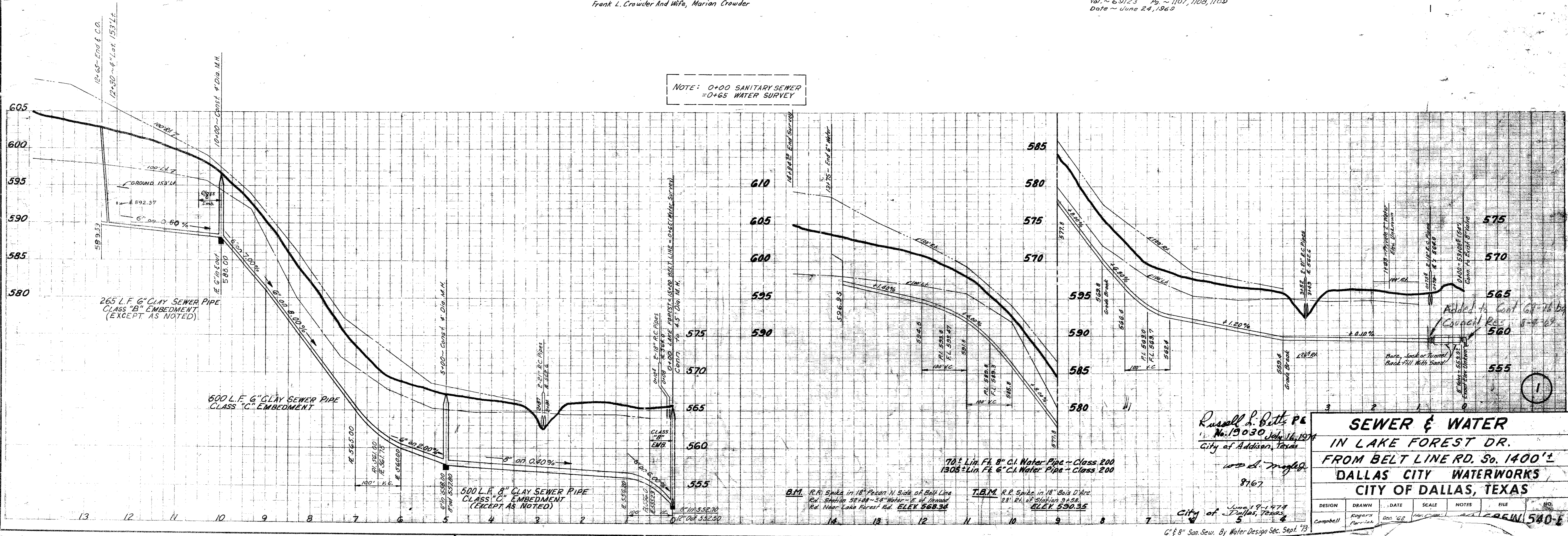
Weldon Edward Combs & Anna D. Combs 4-25-69  
 15' Strip Easement along East side of property, see instrument  
 The City of Dallas shall not have right to remove or harm  
 any tree described in tree list and located on said  
 property without written permission of owners  
 From Sta. 4+00 to 6+12  
 Blk. 8171, Abst. 157  
 The City of Dallas shall be responsible for  
 installing 6" water on East side of street  
 C.O. ~ 69-3495  
 Vol. ~ 69123 Pg. ~ 114, 115, 116, 117  
 Date ~ June 24, 1969



**LAKE FOREST DRIVE** Dedicated to The CITY OF ADDISON For Street & Utility Purposes By Easement Instruments Dated June 1974 By The Following Property Owners:  
 John L. Shirley And Wife, Wanda Shirley  
 Donald R. Dinsmore And Wife, Cary J. Dinsmore  
 Dr. J. P. Korke And Wife, Nancy R. Korke  
 W.L. Kemp And Wife, Rena Kemp  
 Paul Hodge And Wife, Hazel Hodge  
 Victor A. Sahn, Jr. And Wife, Bobbie Sahn, Jr.  
 Frank L. Crowder And Wife, Marion Crowder

Philip Edward Wilson, Homer L. Kemp, Rena A. Kemp, 4-25-69  
 John B. Allen, Virginia D. Allen, Kenneth L. Staggs,  
 Priscilla Staggs, S. C. Smock Jr., Jean C. Smock,  
 Wynona L. Shirley  
 15' (30' Esmt. ~ From Sta. 0+703 to 14+84) 30  
 Tracts # 1, 2, 3, 4, 5, 6, 7, 8, 9  
 Blk. 8171, Abst. 157  
 C.O. ~ 69-3495  
 Vol. ~ 69123 Pg. ~ 1107, 1108, 1109  
 Date ~ June 24, 1969

NOTE: 0+00 SANITARY SEWER  
 =+65 WATER SURVEY



Russell D. Batt, P.E.  
 No. 19030 July 16, 1974  
 City of Addison, Texas

**SEWER & WATER**  
**IN LAKE FOREST DR.**  
**FROM BELT LINE RD. So. 1400'**  
**DALLAS CITY WATERWORKS**  
**CITY OF DALLAS, TEXAS**

DESIGN	DRAWN	DATE	SCALE	NOTES	FILE NO.
Campbell	Purvis	Dec 69	1" = 40'		1540-1

Added to Cont.  
 69-76 by Council  
 Res. 8-4-69

FOREST BLUE DR.

8" Water Shall Be Installed Under Point By Bars, Jack or Tunnel BEFORE Starting Being Operation, Uncover Existing Valve To Determine Exact Elevation.

Added to Cont. 69-76 by Council Res. 8-4-69

Base, Jack or Tunnel Backfill With Sand