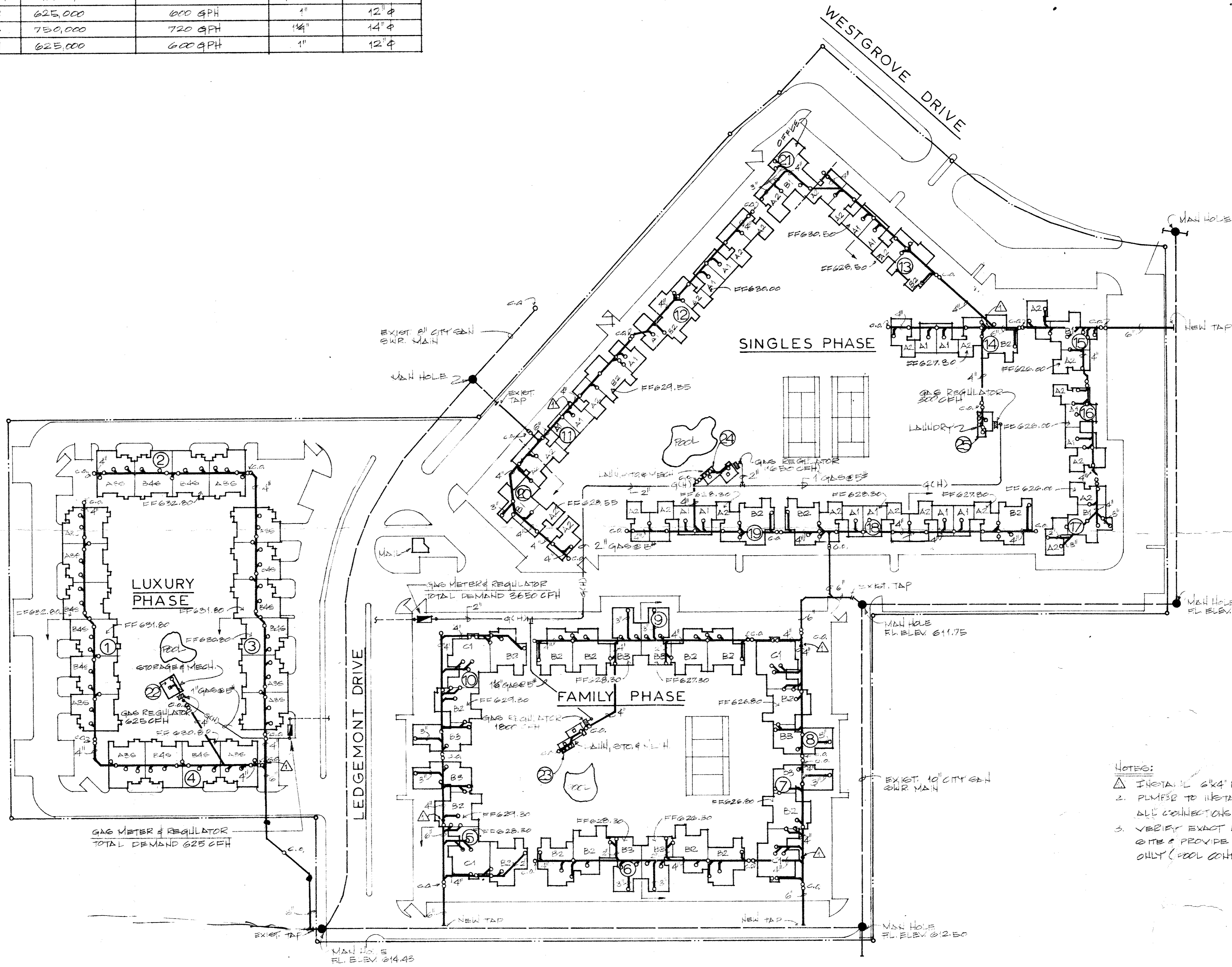


HOT WATER BOILER SCHEDULE

MAKE	MODEL NO.	QTY.	LOCATION	BTH INPUT EA.	REC TO 100 REE EA.	GAS CON.	FLUE SIZE
LAARS	625-S	1 EA.	Bldg# 22	625,000	600 GPH	1"	12" φ
LAARS	750-S	2 EA.	Bldg# 23	750,000	720 GPH	1 1/4"	14" φ
LAARS	625-S	2 EA.	Bldg# 24	625,000	600 GPH	1"	12" φ

PLUMBING SYMBOLS	
SYMBOL	DESCRIPTION
(Symbol)	CITY SANITARY SEWER MAIN
(Symbol)	CITY WATER MAIN
(Symbol)	CITY WATER METER
(Symbol)	SANITARY SEWER PIPE
(Symbol)	SANITARY SEWER VENT PIPE
(Symbol)	COLD WATER SUPPLY PIPE
(Symbol)	HOT WATER SUPPLY PIPE
(Symbol)	HOT WATER RETURN PIPE
(Symbol)	VALVE BOX AND VALVES
(Symbol)	DOUBLE CHECK ASSEMBLY 4" IN 4" X 4"
(Symbol)	GAS MAIN - INTERMEDIATE HIGH PRESSURE
(Symbol)	GAS SUPPLY PIPE - HIGH PRESSURE 3/8"
(Symbol)	GAS SUPPLY PIPE - LOW PRESSURE 1/2"
(Symbol)	GAS METER AND REGULATOR
(Symbol)	GAS REGULATOR
(Symbol)	GAS STOP
(Symbol)	GATE VALVE
(Symbol)	CHECK VALVE
(Symbol)	GLOBE VALVE
(Symbol)	ONE-WAY SANITARY SEWER CLEAN-OUT
(Symbol)	TWO-WAY SANITARY SEWER CLEAN-OUT
(Symbol)	WALL CLEAN-OUT
(Symbol)	FLOOR DRAIN
(Symbol)	ROOF DRAIN
(Symbol)	AREA DRAIN
(Symbol)	FROST PROOF HOSE BIB
(Symbol)	TEMP. PRES. AND RELIEF VALVE

NOTE: ALL SYMBOLS SHOWN MAY NOT NECESSARILY BE USED



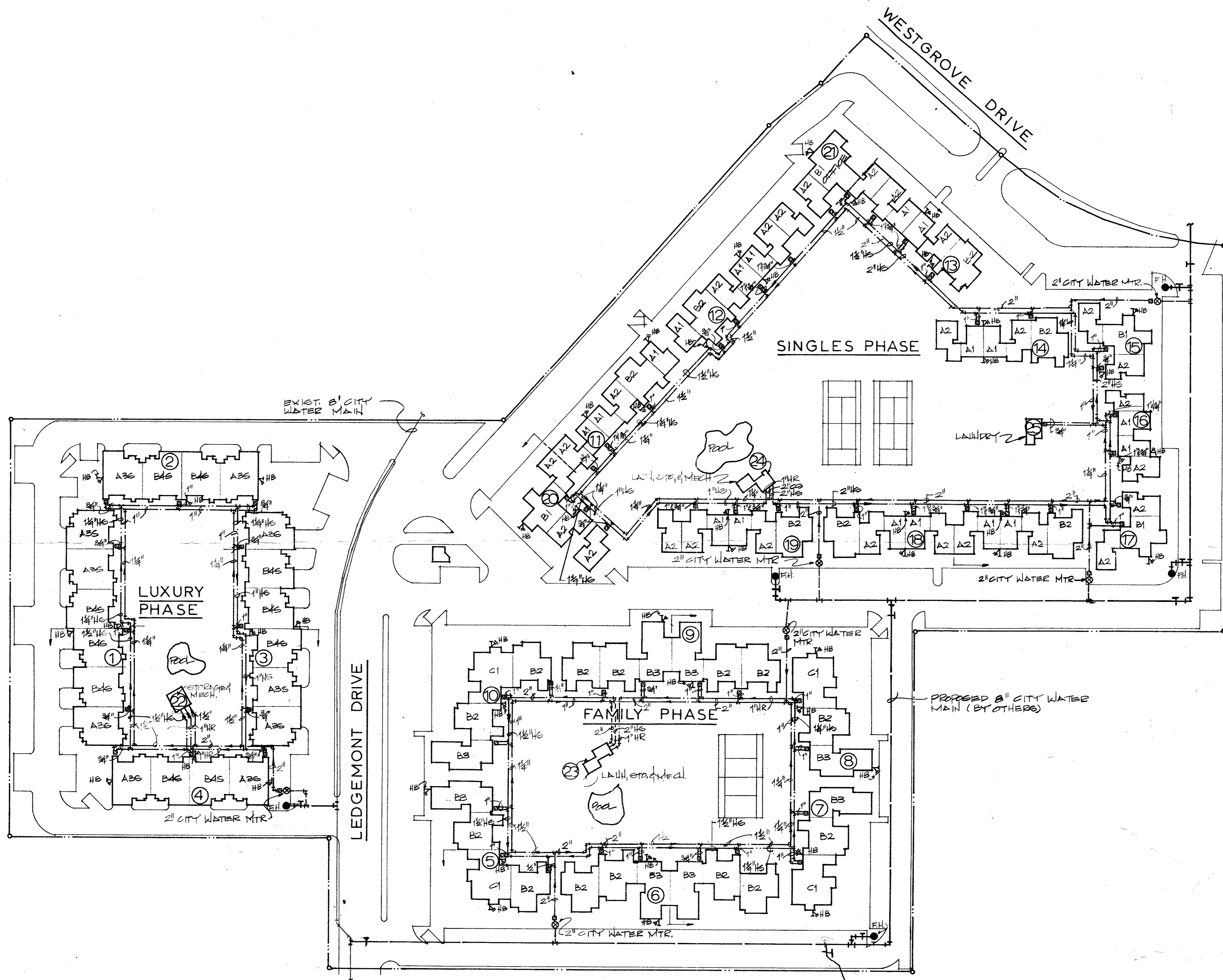
- NOTES:
1. INSTALL 6" x 4" REDUCER @ THIS LOCATION
 2. PUMPER TO INSTALL WATER METERS AND MAKE ALL CONNECTIONS RECD TO EXIST. CITY SANITARY SEWER MAIN
 3. VERIFY EXACT LOCATIONS OF POOL EQUIP @ JOB SITE & PROVIDE 2" DRAIN @ 2' SPLY ROUGH-IN ONLY (POOL CONTR TO MAKE FINAL CONN'S)



PLUMBING SITE PLAN - SANITARY SEWER & GAS PIPING
 SCALE: 1" = 50'-0"

REV: 8-21-79 (GH)

PLUMBING SITE PLAN THE FOUNTAINS - 184 UNITS 16400 LEDGEMONT DR.	Job No. 526
Tempo Mechanical A Texas Distributors Inc. Company 2252 Wisconsin St. Dallas, Texas 75229 Phone 214-241-9475	Date 7-22-79 Dwn By G.M. Ckd By Scale: 1" = 50'-0" Dwg No. 1 of 7



PLUMBING SYMBOLS	
SYMBOL	DESCRIPTION
---	CITY SANITARY SEWER MAIN
---	CITY WATER MAIN
○	CITY WATER METER
---	SANITARY SEWER PIPE
---	SANITARY SEWER VENT PIPE
---	COLD WATER SUPPLY PIPE
---	HOT WATER SUPPLY PIPE
---	HOT WATER RETURN PIPE
VB	VALVE BOX AND VALVES
DCA	DOUBLE CHECK ASSEMBLY SET IN BOX
IMF	GAS MAIN-INTERMEDIATE HIGH PRESSURE
GMH	GAS SUPPLY PIPE-HIGH PRESSURE 5/8"
GLL	GAS SUPPLY PIPE-LOW PRESSURE 1/2"
MR	GAS METER AND REGULATOR
R	GAS REGULATOR
GS	GAS STOP
GV	GATE VALVE
CV	CHECK VALVE
SV	SHUT VALVE
CO	ONE WAY SANITARY SEWER CLEAN-OUT
CO	TWO WAY SANITARY SEWER CLEAN-OUT
WC	WALL CLEAN-OUT
FD	FLOOR DRAIN
RD	ROOF DRAIN
AD	AREA DRAIN
HB	FROST PROOF HOSE BIB
TR	TEMP. PRESS. AND RELIEF VALVE
NOTE: ALL SYMBOLS SHOWN MAY NOT NECESSARILY BE USED	



PLUMBING SITE PLAN-HOT & COLD WATER PIPING
 SCALE: 1"=50'-0"

REV: B-21-79 (GM)

PLUMBING SITE PLAN THE FOUNTAINS-184 UNITS 16400 LEDGEMONT DR.	Job No. 526
Tempo Mechanical A Texas Distributors Inc. Company 2252 Wisconsin St. Dallas Texas 75229 Phone 214-241-9475	Date 7-24-79 Dwn By G.M. Ckd By Scale: 1"=50'-0" Dwg No. 2 of 7

WATER & SEWER SPECIFICATIONS

PVC Pressure Pipe

The PVC pipe shall be SDR-18. Dimensions Class 150. The pipe shall meet or exceed requirements of AWWA C-900-75, PVC pipe with cast iron outside dimensions and with rubber ring joints. PVC water pipe shall be listed by Underwriters Laboratories and approved for use in cities and towns of Texas by the State Board of Insurance. The rigid PVC pipe shall bear the seal of approval (or "NSF" mark) of the National Sanitation Foundation Testing Laboratory for potable water pipe. Provisions must be made for contraction and expansion at each joint with a rubber ring, and an integral thickened bell as part of each joint. Pipe and fittings must be assembled with a non-toxic lubricant. Pipe shall be made from NSF approved Class 12454-A or B PVC Pipe Compound conforming to ASTM resin specification D1784.

Joints and Fittings - Fittings shall be mechanical joint or rubber ring slip joint cast iron fittings.

PVC Sewer Pipe

PVC pipe and fittings shall meet the extra strength requirements of ASTM specification D3034, SDR 35. Pipe shall have integral wall bell and spigot joints.

Joints - Joints for the PVC pipe and fittings shall be compression rubber gasket joints. The bell shall consist of an integral wall section with factory installed ring securely locked in bell groove to provide positive seal under all installation conditions.

Fittings - Fittings and accessories shall be manufactured and furnished by the pipe supplier and have bell and/or spigot configuration identical to that of the pipe.

Stiffness - Minimum pipe stiffness at 3% deflection shall be 46 for all sizes when calculated in accordance with ASTM D-2412.

Connections at Manholes - Asbestos cement sleeves with rubber ring joint will be used at manhole walls to provide positive water tight connections.

Pipe Bedding

Bedding material for water and sewer pipe shall be sand. Sand shall be placed 6" below the pipe, around the pipe, and 6" above the pipe.

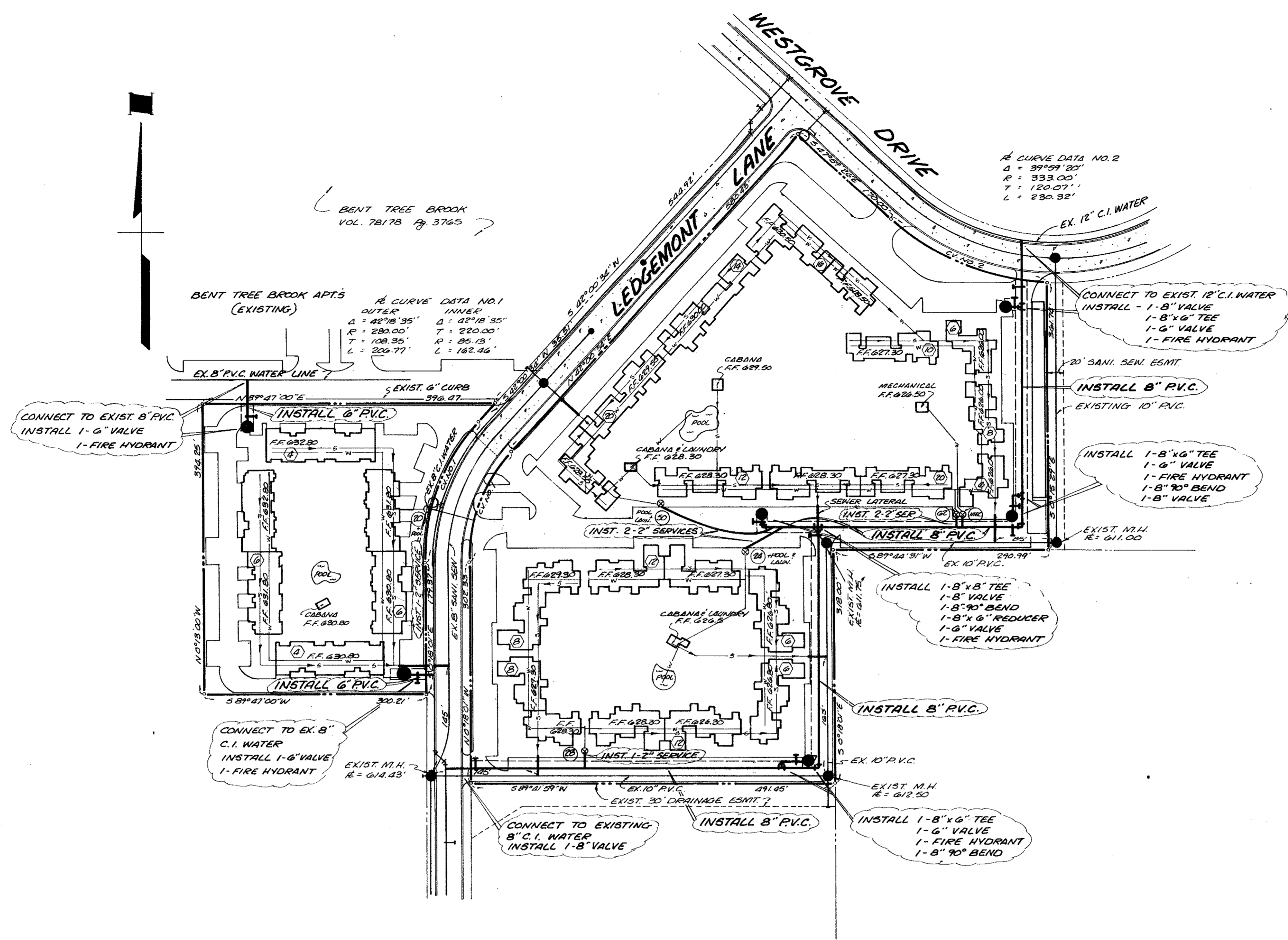
Tracer

A no. 12 coated copper wire or metallic tracer tape equivalent shall be placed in the trench over all water lines.

BENCH MARK: TOP OF FIREHYDRANT AT NORTHWEST CORNER WESTGROVE DRIVE AND DALLAS NORTH PARKWAY. ELEVATION 621.01

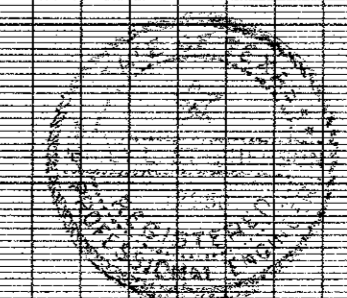
SITE SYMBOLS

- F.F. DENOTES FINISH FLOOR
- (U) DENOTES UNITS PER BUILDING
- (S) DENOTES UNITS PER SERVICE

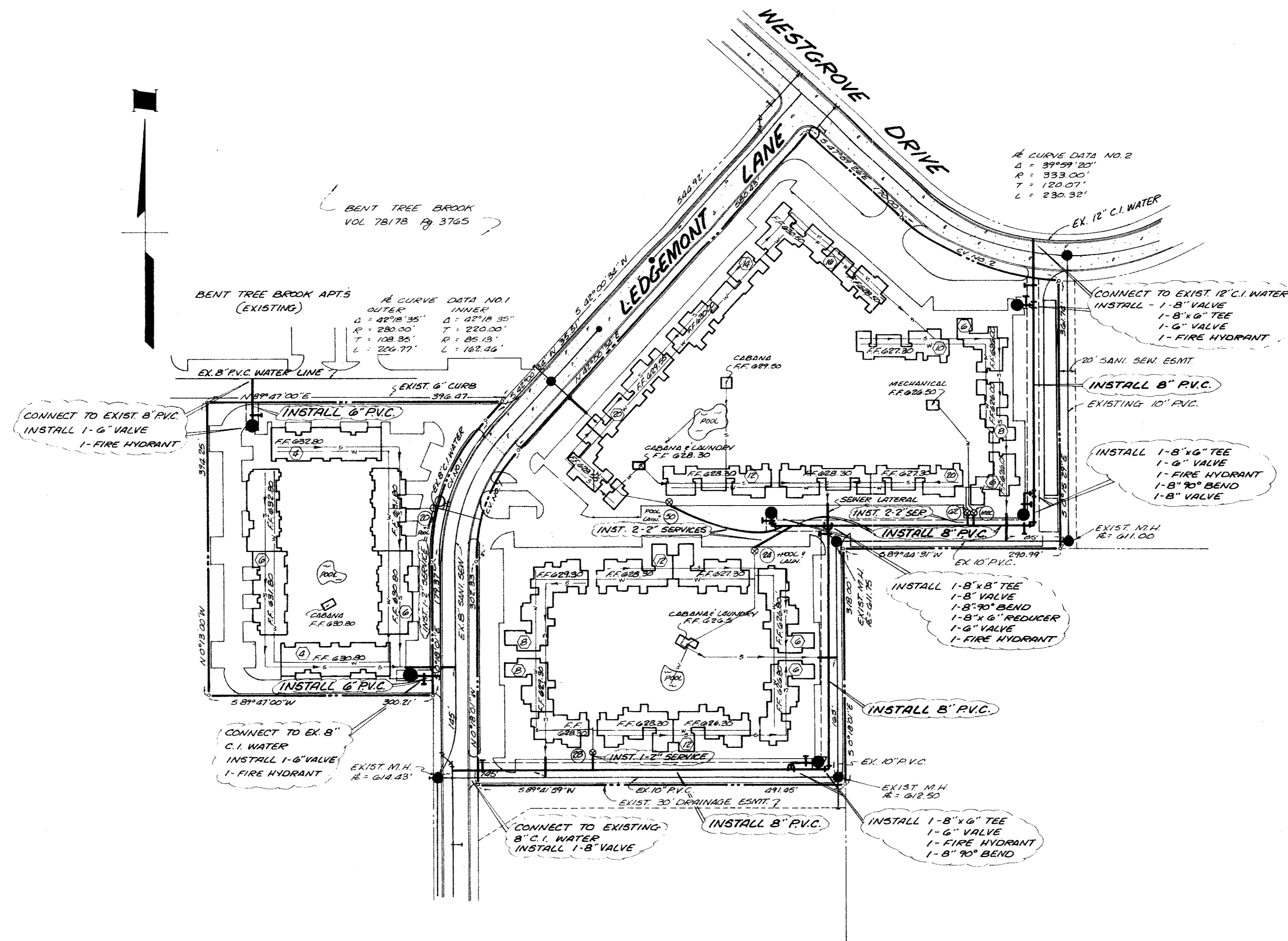


DESIGN	DRAWN	DATE	SCALE	NOTES	FILE	NO.
BLS	SCG	5-1-77	1/2"=1'-0"	R.O.H.		

WATER & SANITARY SEWER
BENT TREE III
FOLSOM INVESTMENT CO. - DEVELOPER
BILLY L. STEPHENSON - ENGINEER
CITY OF ADDISON, TEXAS



DESIGN	DRAWN	DATE	SCALE	NOTES	FILE	NO.
BLS	SCG	5-1-77	1/2"=1'-0"	R.O.H.		



PVC Pressure Pipe

The PVC pipe shall be SDR-18, Dimensions Class 150. The pipe shall meet or exceed requirements of AWWA C-900-75, PVC pipe with cast iron outside dimensions and with rubber ring joints. PVC water pipe shall be listed by Underwriters Laboratories and approved for use in cities and towns of Texas by the State Board of Insurance. The rigid PVC pipe shall bear the seal of approval (or "NSF" mark) of the National Sanitation Foundation Testing Laboratory for potable water pipe. Provisions must be made for contraction and expansion at each joint with a rubber ring, and an integral thickened bell as part of each joint. Pipe and fittings must be assembled with a non-toxic lubricant. Pipe shall be made from NSF approved Class 12454-A or B PVC Pipe Compound conforming to ASTM resin specification D1784.

Joints and Fittings - Fittings shall be mechanical joint or rubber ring slip joint cast iron fittings.

PVC Sewer Pipe

PVC pipe and fittings shall meet the extra strength requirements of ASTM specification D3034, SDR 35. Pipe shall have integral wall bell and spigot joints.

Joints - Joints for the PVC pipe and fittings shall be compression rubber gasket joints. The bell shall consist of an integral wall section with factory installed ring securely locked in bell groove to provide positive seal under all installation conditions.

Fittings - Fittings and accessories shall be manufactured and furnished by the pipe supplier and have bell and/or spigot configuration identical to that of the pipe.

Stiffness - Minimum pipe stiffness at 5% deflection shall be 46 for all sizes when calculated in accordance with ASTM D-2412.

Connections at Manholes - Asbestos cement sleeves with rubber ring joint will be used at manhole walls to provide positive water tight connections.

Pipe Bedding

Bedding material for water and sewer pipe shall be sand. Sand shall be placed 6" below the pipe, around the pipe, and 6" above the pipe.

Tracer

A no. 12 coated copper wire or metallic tracer tape equivalent shall be placed in the trench over all water lines.

BENCH MARK: TOP OF FIREHYDRANT AT NORTHWEST CORNER WESTGROVE DRIVE AND DALLAS NORTH PARKWAY. ELEVATION 621.01

- SITE SYMBOLS**
- F.F. DENOTES FINISH FLOOR
 - (⊙) DENOTES UNITS PER BUILDING
 - (⊚) DENOTES UNITS PER SERVICE

Don P... 8-2-79

WATER & SANITARY SEWER
BENT TREE III
 FOLSOM INVESTMENT CO. - DEVELOPER
 BILLY L. STEPHENSON - ENGINEER
 CITY OF ADDISON, TEXAS

DESIGN	DRAWN	DATE	SCALE	NOTES	FILE	NO.
B.L.S.	S.C.S.	5-1-79	1"=100'	R.O.M.		