

WATER & SEWER SPECIFICATIONS

PVC Pressure Pipe

The PVC pipe shall be SDR-18. Dimensions Class 150. The pipe shall meet or exceed requirements of AWWA C-900-75, PVC pipe with cast iron outside dimensions and with rubber ring joints. PVC water pipe shall be listed by Underwriters Laboratories and approved for use in cities and towns of Texas by the State Board of Insurance. The rigid PVC pipe shall bear the seal of approval (or "NSF" mark) of the National Sanitation Foundation Testing Laboratory for potable water pipe. Provisions must be made for contraction and expansion at each joint with a rubber ring, and an integral thickened bell as part of each joint. Pipe and fittings must be assembled with a non-toxic lubricant. Pipe shall be made from NSF approved Class 12454-A or B PVC Pipe Compound conforming to ASTM resin specification D1784.

Joints and Fittings - Fittings shall be mechanical joint or rubber ring slip joint cast iron fittings.

PVC Sewer Pipe

PVC pipe and fittings shall meet the extra strength requirements of ASTM specification D3034, SDR 35. Pipe shall have integral wall bell and spigot joints.

Joints - Joints for the PVC pipe and fittings shall be compression rubber gasket joints. The bell shall consist of an integral wall section with factory installed ring securely locked in bell groove to provide positive seal under all installation conditions.

Fittings - Fittings and accessories shall be manufactured and furnished by the pipe supplier and have bell and/or spigot configuration identical to that of the pipe.

Stiffness - Minimum pipe stiffness at 3% deflection shall be 46 for all sizes when calculated in accordance with ASTM D-2412.

Connections at Manholes - Asbestos cement sleeves with rubber ring joint will be used at manhole walls to provide positive water tight connections.

Pipe Bedding

Bedding material for water and sewer pipe shall be sand. Sand shall be placed 6" below the pipe, around the pipe, and 6" above the pipe.

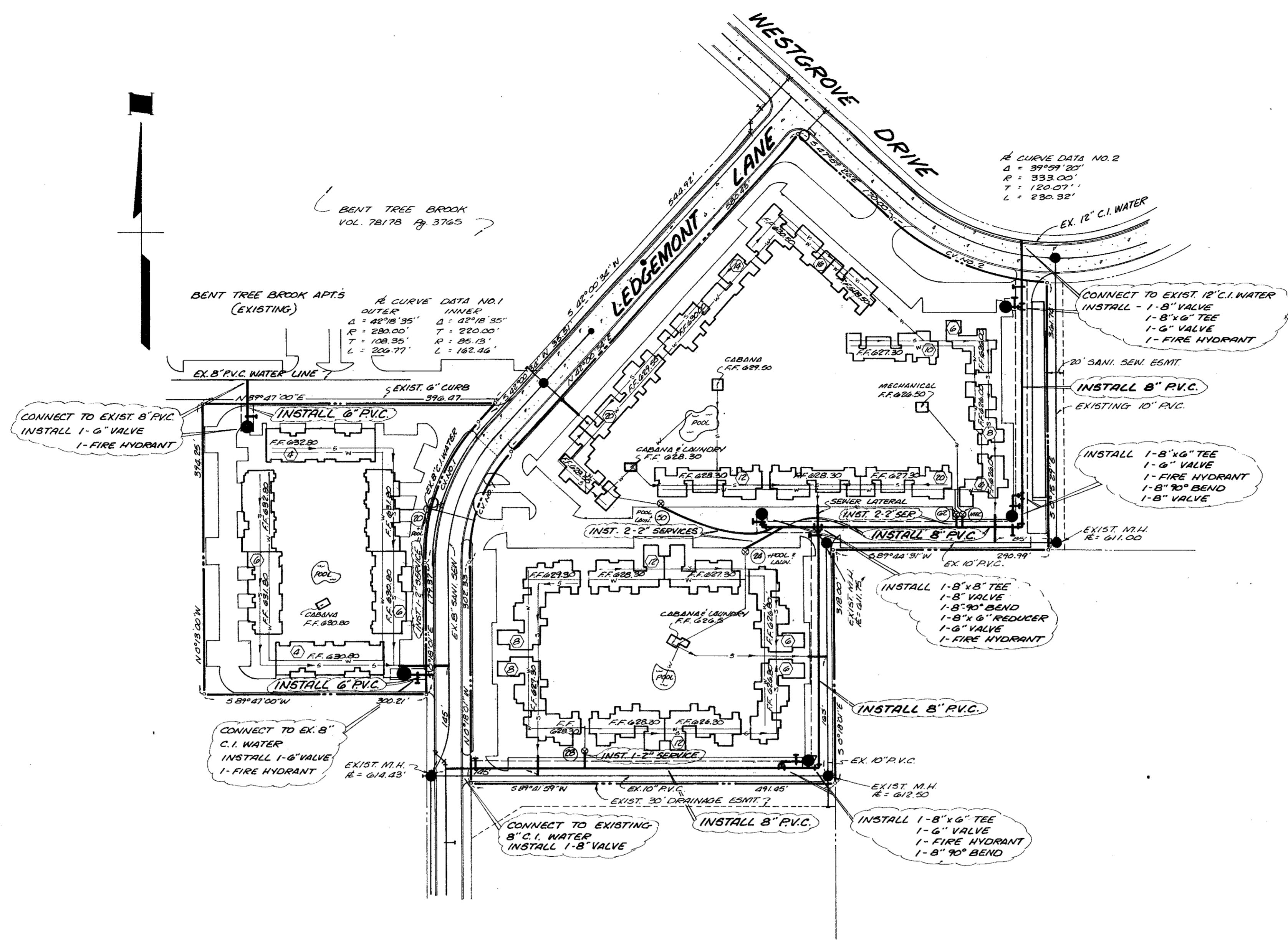
Tracer

A no. 12 coated copper wire or metallic tracer tape equivalent shall be placed in the trench over all water lines.

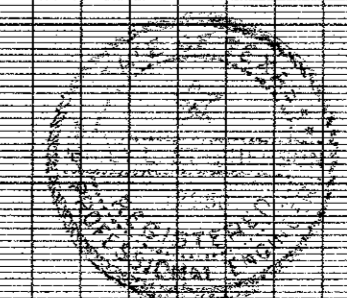
BENCH MARK: TOP OF FIREHYDRANT AT NORTHWEST CORNER WESTGROVE DRIVE AND DALLAS NORTH PARKWAY. ELEVATION 621.01

SITE SYMBOLS

- F.F. DENOTES FINISH FLOOR
- (U) DENOTES UNITS PER BUILDING
- (S) DENOTES UNITS PER SERVICE



WATER & SANITARY SEWER						
BENT TREE III						
FOLSOM INVESTMENT CO. - DEVELOPER						
BILLY L. STEPHENSON - ENGINEER						
CITY OF ADDISON, TEXAS						
DESIGN	DRAWN	DATE	SCALE	NOTES	FILE	NO.
B.L.S.	S.C.G.	5-1-77	1/2" = 1'-0"	R.O.H.		



CITY OF ADDISON
 [Signature]
 5-10-77