



ADDISON - WESTGROVE SUBDIVISION  
(T.P. & L. SUBSTATION)

A: 2.1 ACRES  
C: 0.9  
I: 7.2  
Q: 13.06

ADDISON ROAD  
(60' R.O.W.)

N. 00° 13' 00" W.

N. 89° 47' 00" E.

334.60'

N. 00° 13' 00" W.

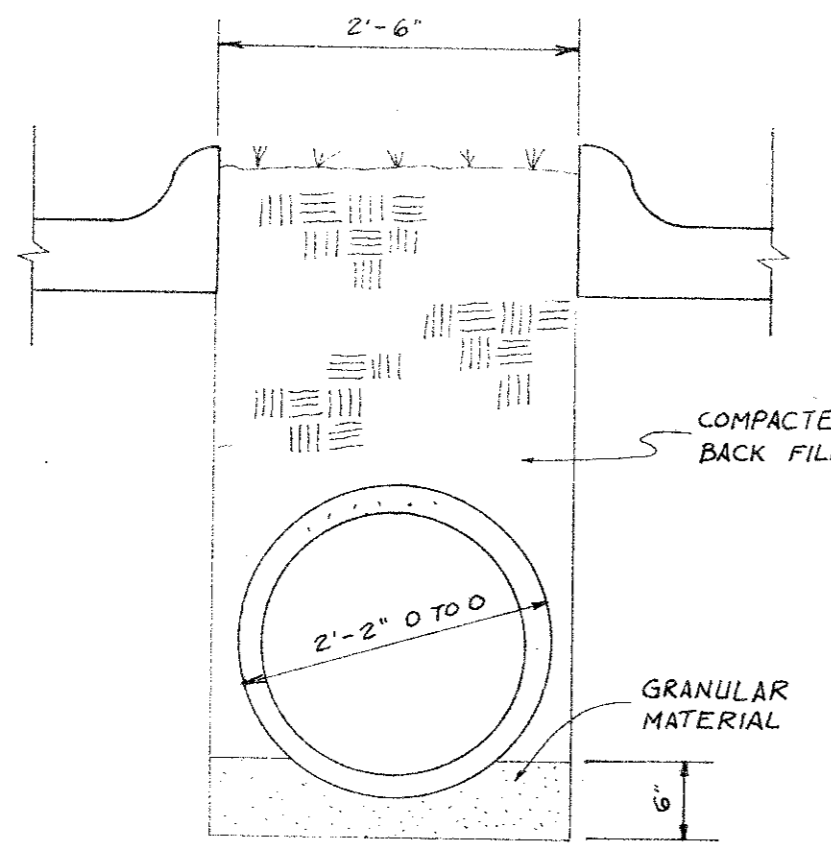
N. 89° 47' 00" E.

N. 00° 13' 00" W.

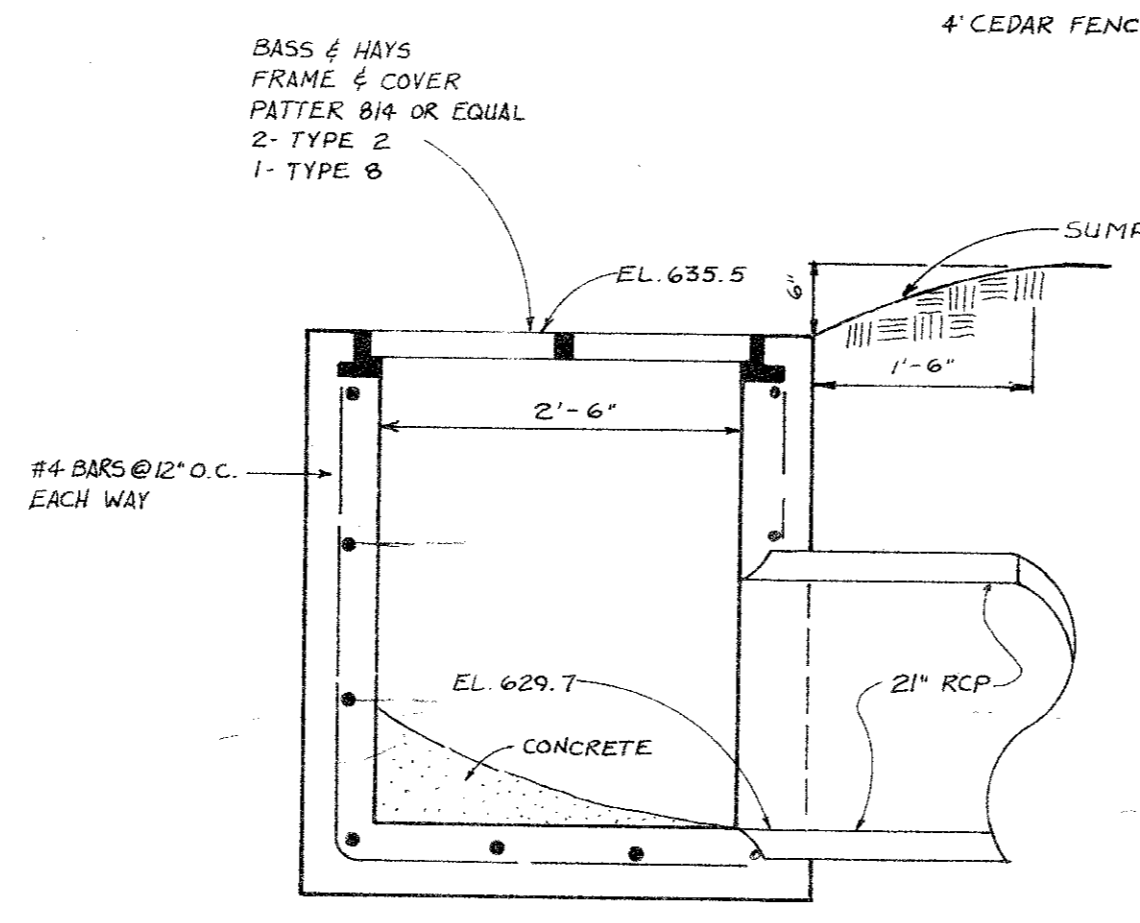
BENT TREE BROOK

LEDGE MONT LANE  
(60' R.O.W.)

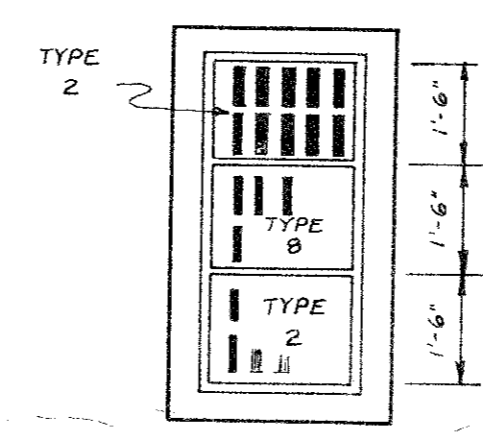
BENT TREE III



SECTION B  
3/4" = 1'-0"



SECTION A  
3/4" = 1'-0"

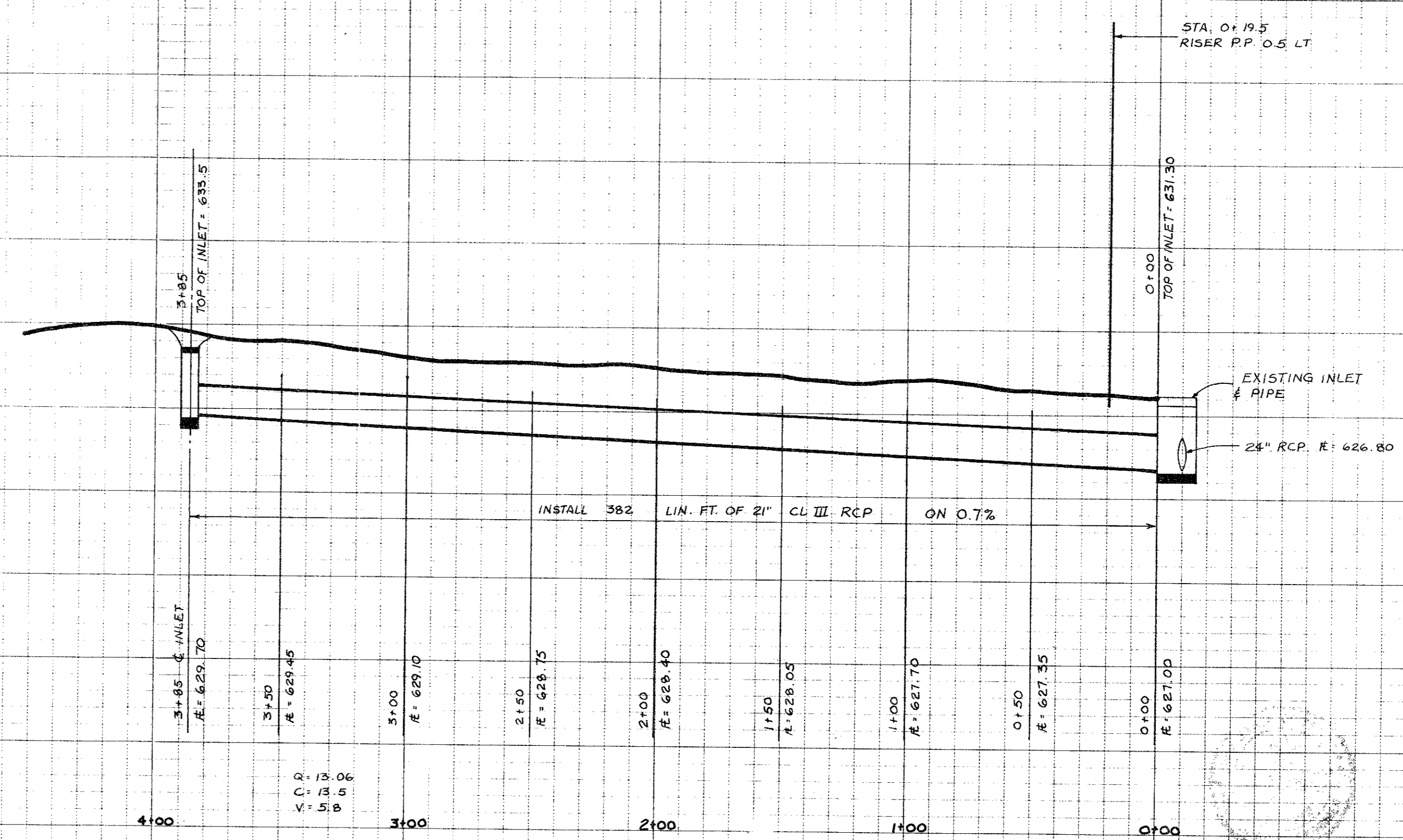


PLAN OF GRATE INLET  
3/8" = 1'-0"

REVERSE CURVE  
Δ: 15° 00' 00"  
R: 146.67'  
T: 19.51'  
C: 38.8'  
L: 38.39'

CURVE DATA:  
Δ: 42° 18' 35"  
R: 200.00'  
T: 108.55'  
L: 206.77'

CURVE DATA:  
Δ: 42° 18' 35"  
R: 220.00'  
T: 95.15'  
L: 162.45'



**STORM SEWER**  
TEXAS POWER AND LIGHT  
ADDISON, TEXAS  
BILLY L. STEPHENSON - ENGINEER

DESIGN	DRAWN	DATE	SCALE	NOTES	FILE	NO.
BLS	TNM	11 JUL 83	1" = 30'	RDH		83038

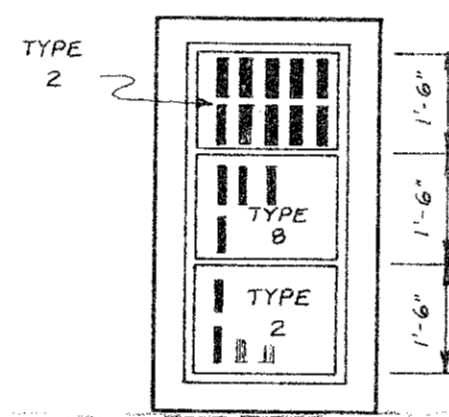
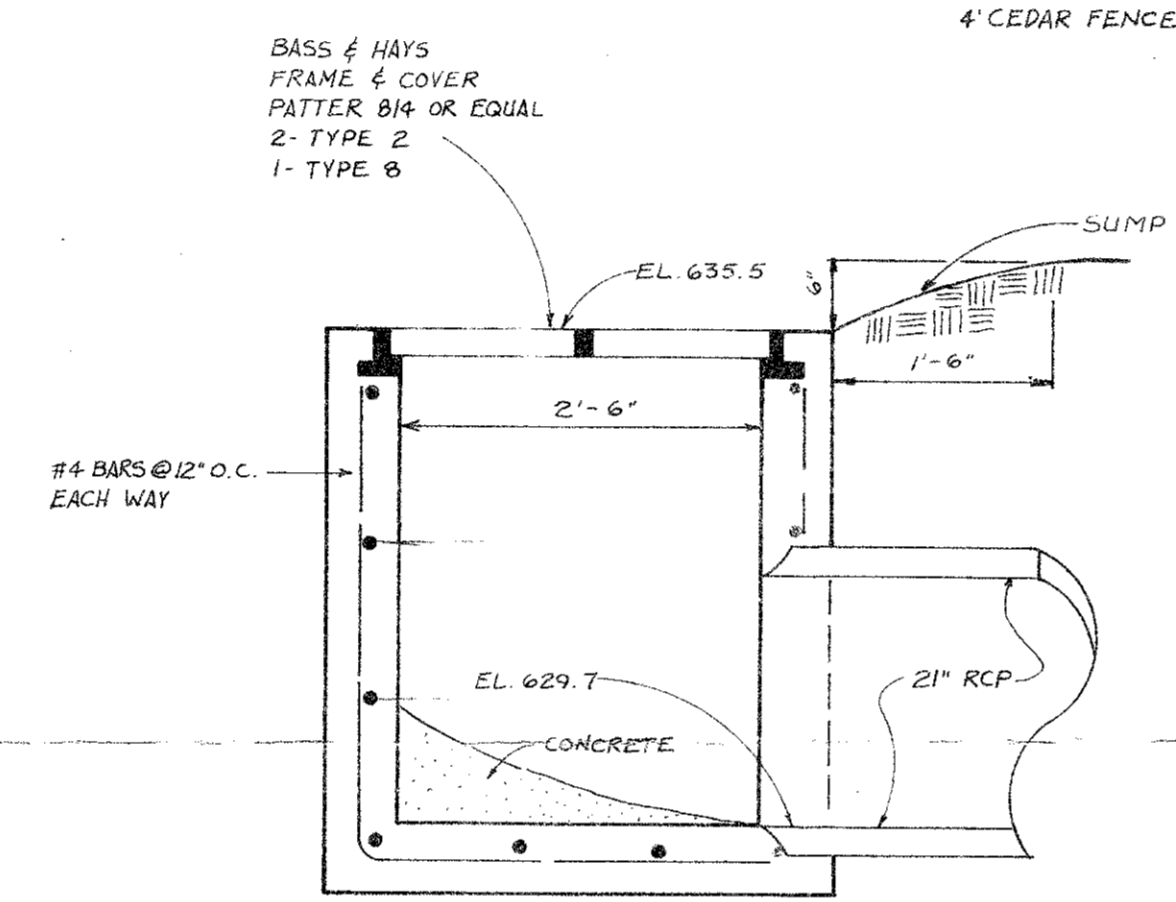
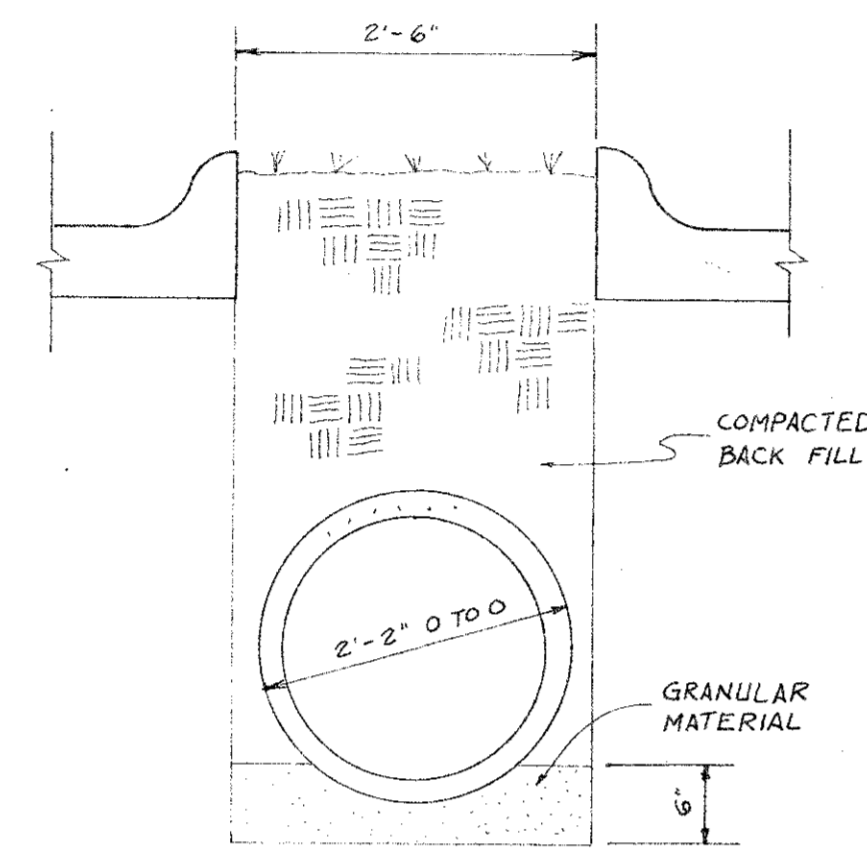
ADDISON - WESTGROVE SUBDIVISION  
(T.P. & L. SUBSTATION)

A: 2.1 ACRES  
C: 0.9  
I: 7.2  
Q: 13.06

ADDISON ROAD (60' R.O.W.)

BENT TREE BROOK

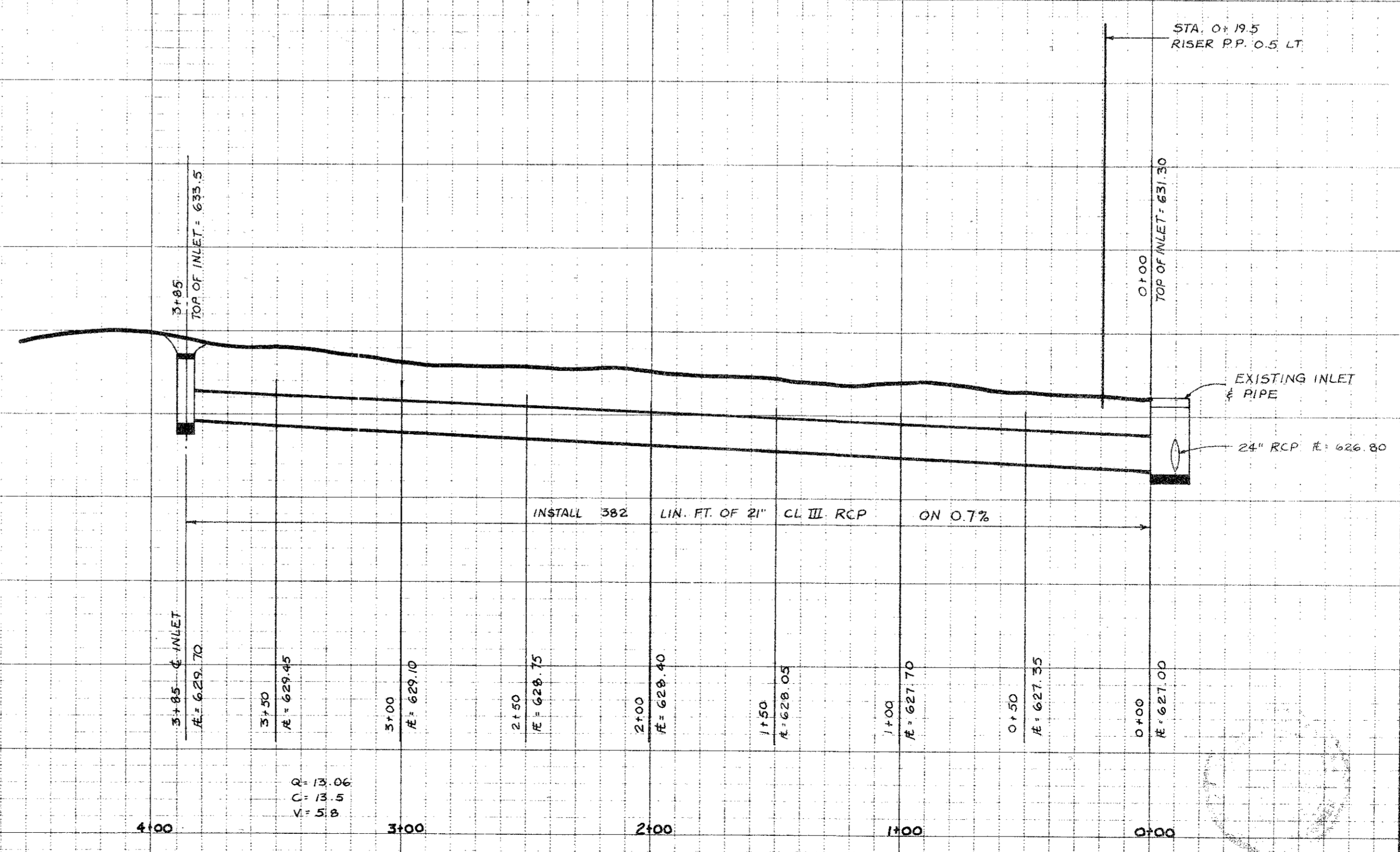
LEDGE MONT LANE (60' R.O.W.)



REVERSE CURVE  
A: 15° 00' 00"  
R: 146.67'  
T: 19.31'  
C: 38.6'  
L: 38.39'

CURVE DATA  
A: 42° 18' 35"  
R: 280.00'  
T: 108.55'  
L: 206.77'

CURVE DATA  
A: 42° 18' 35"  
R: 280.00'  
T: 85.15'  
L: 162.45'



**STORM SEWER**  
TEXAS POWER AND LIGHT  
ADDISON, TEXAS  
BILLY L. STEPHENSON - ENGINEER

DESIGN	DRAWN	DATE	SCALE	NOTES	FILE	NO.
BLS	TNM	11 JUL 83	1"=30'	RDH		83038