



ADDISON - WESTGROVE SUBDIVISION
(T.P. & L. SUBSTATION)

A: 2.1 ACRES
C: 0.9
I: 7.2
Q: 13.06

ADDISON ROAD
(60' R.O.W.)

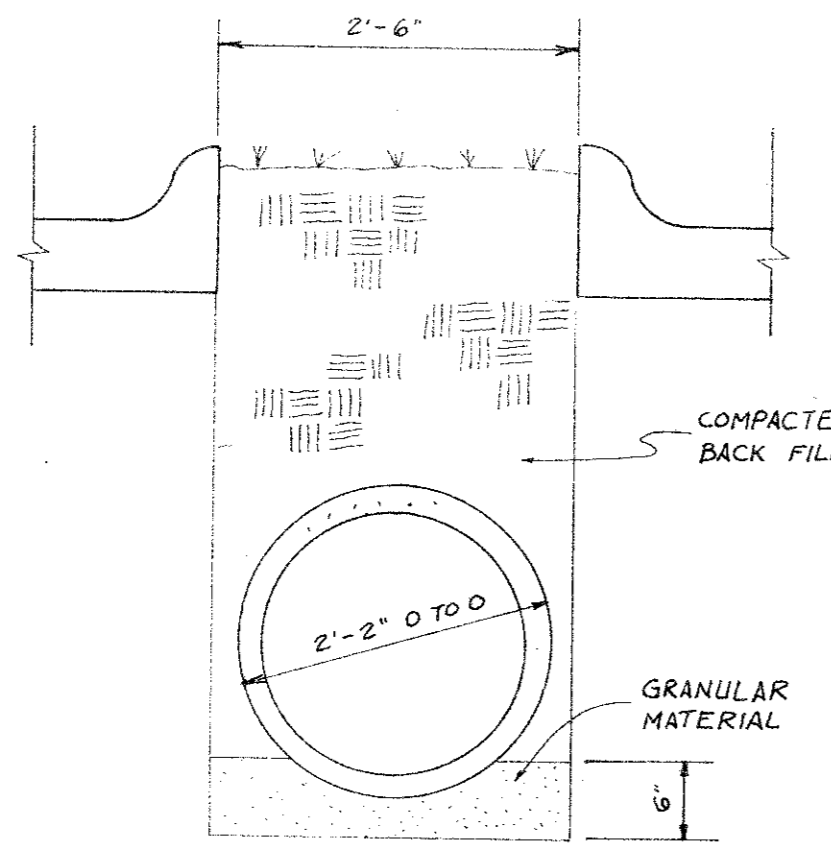
N. 00° 13' 00" W.

N. 89° 47' 00" E.

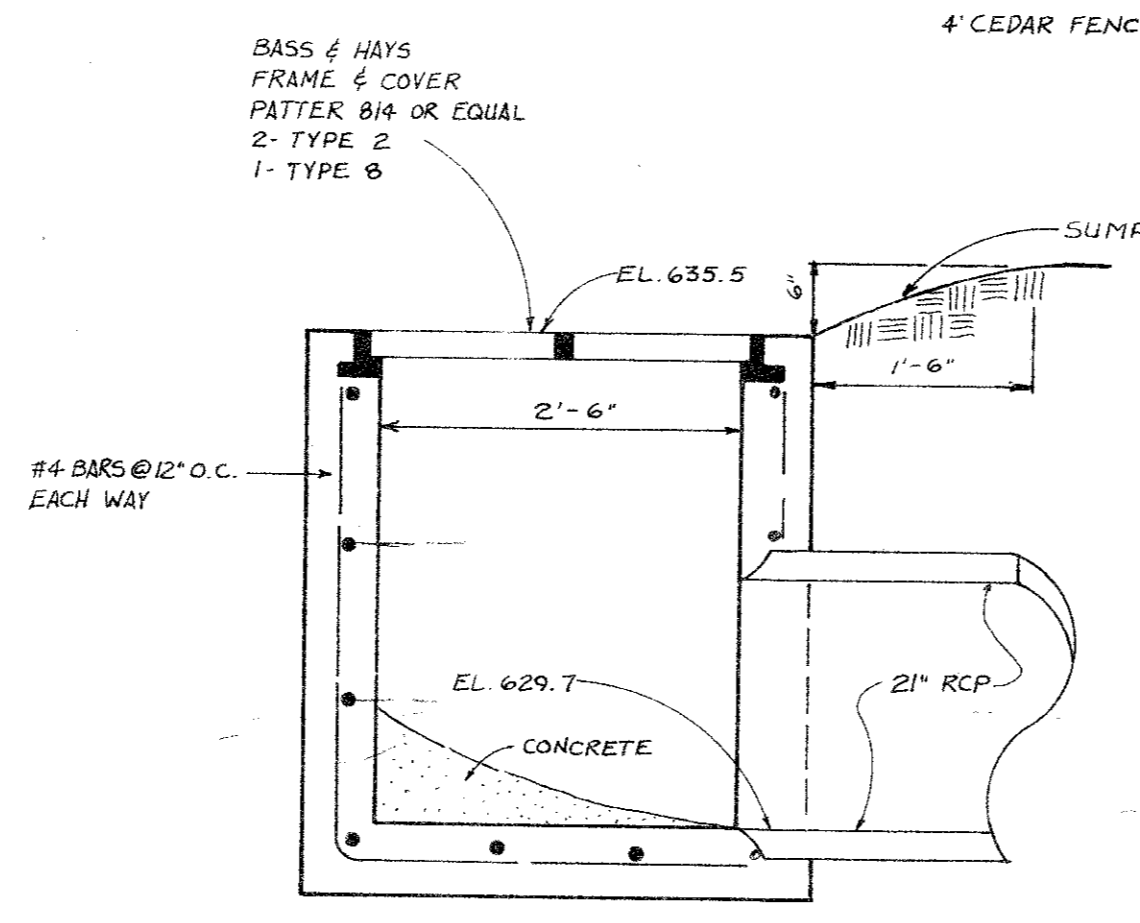
334.60'

N. 00° 13' 00" W.

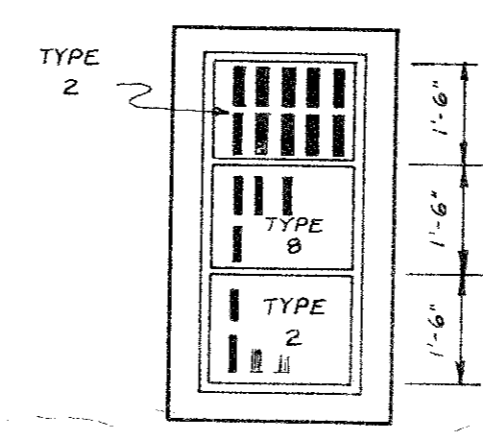
N. 89° 47' 00" E.



SECTION B
3/4" = 1'-0"



SECTION A
3/4" = 1'-0"



PLAN OF GRATE INLET
3/8" = 1'-0"

REMOVE & REPLACE PAVEMENT

REMOVE & REPLACE CURB

BENT TREE BROOK

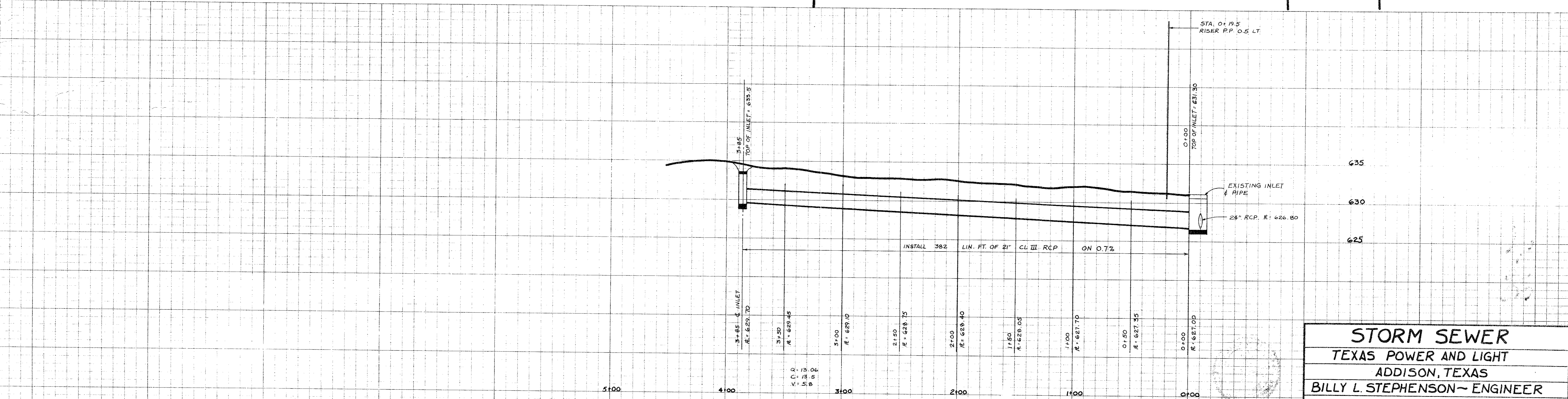
BENT TREE III

LEDGE MONT LANE
(60' R.O.W.)

REVERSE CURVE
Δ: 15° 00' 00"
R: 146.67'
T: 19.51'
C: 38.8'
L: 38.39'

CURVE DATA:
Δ: 42° 18' 35"
R: 200.00'
T: 108.55'
L: 206.77'

CURVE DATA:
Δ: 42° 18' 35"
R: 220.00'
T: 95.15'
L: 162.45'



STORM SEWER
TEXAS POWER AND LIGHT
ADDISON, TEXAS
BILLY L. STEPHENSON - ENGINEER

DESIGN	DRAWN	DATE	SCALE	NOTES	FILE	NO.
BLS	TNM	11 JUL 83	1" = 30'	RDH		83038