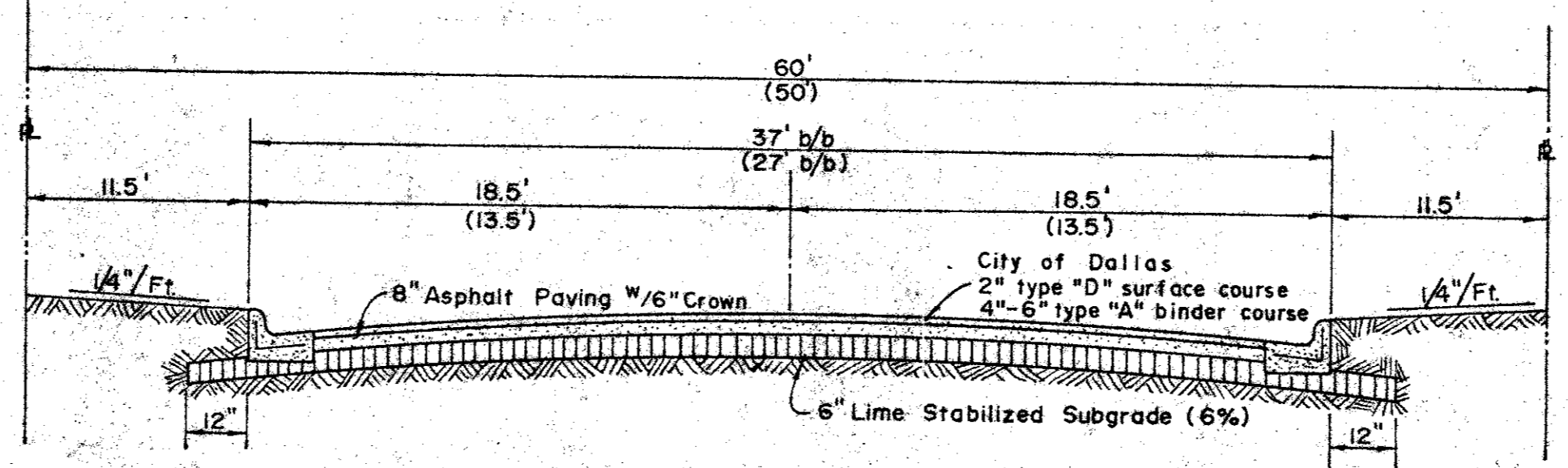
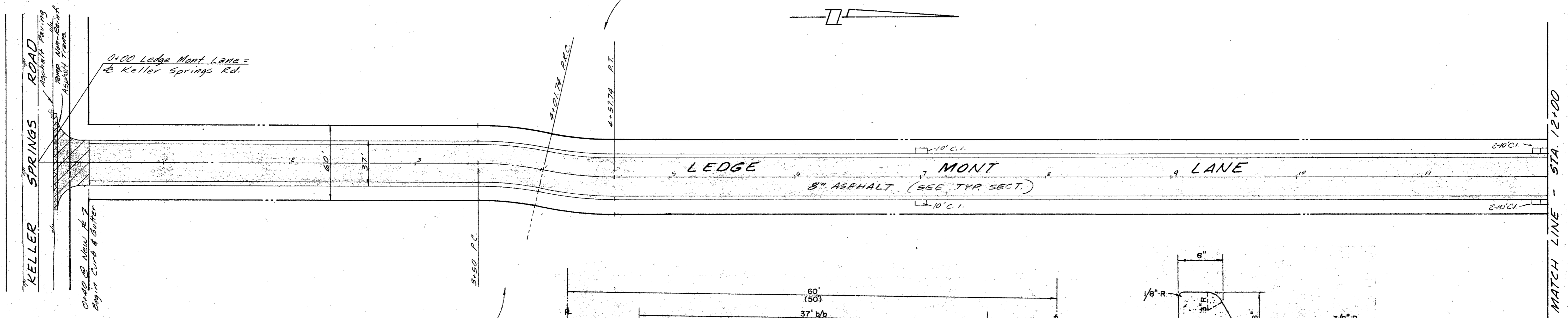
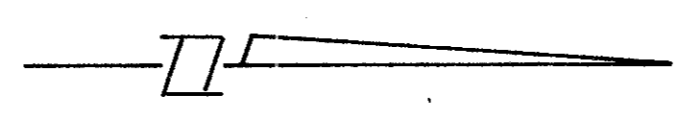
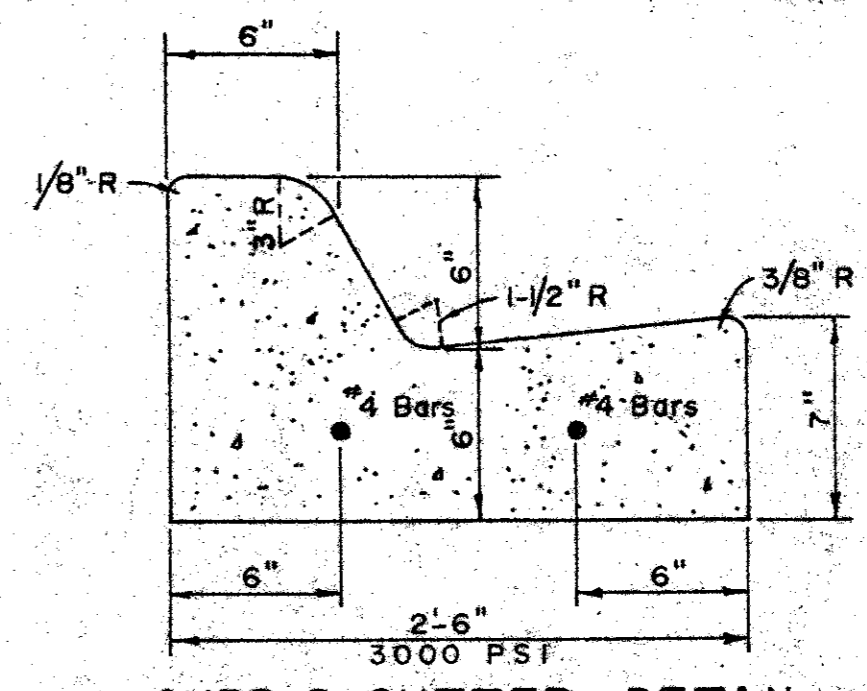


$\Delta = 12^\circ 50' 07''$
 $R = 250'$
 $T = 28.12'$
 $L = 56.00'$

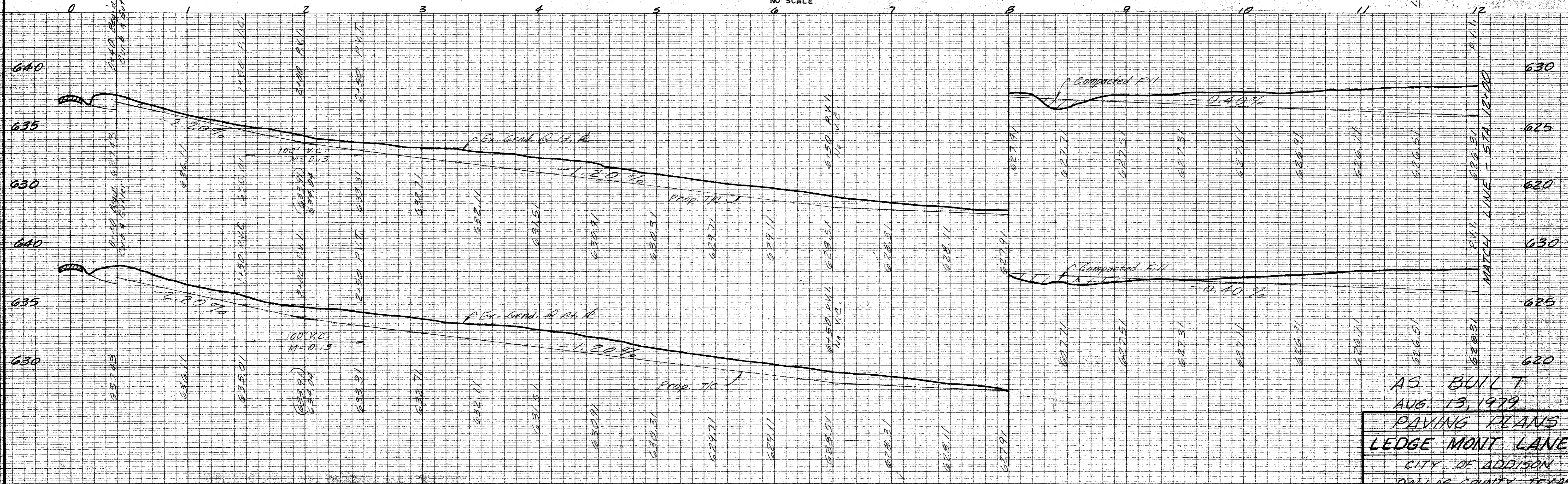


TYPICAL SECTION
NO SCALE



CURB & GUTTER DETAIL

NOTE:
Paving & subgrade preparation and materials to be installed in accordance with City of Dallas general specifications and standards.



AS BUILT
 AUG. 13, 1979
 PAVING PLANS
 LEDGE MONT LANE
 CITY OF ADDISON
 DALLAS COUNTY, TEXAS

NO.	DATE	BY	REVISION
1	5/7/79	RE	Revised P.V. Sta. from 11+50 to 12+00 New Point set at 11+50 and at 12+00.

NO. 1265-PLAN PROFILE PLATE A
"CLEARPRINT PAPER CO."
MADE IN U.S.A.

BENCH MARK: Bolt in Brazos Power Pole (No. A6-12-G) on the south side of Keller Springs Road, 1350' west of the west line of Ledge Mont Lane. Elev. 636.67

BENCH MARK: 60d nail in power pole, east side Addison Road, northwest corner of Bent Tree Oaks Addition. Elev. 644.05

THREADGILL - DOWDEY and ASSOCIATES CONSULTING ENGINEERS DALLAS, TEXAS						
DESIGN	DRAWN	CHECKED	DATE	SCALE	JOB	SHEET
AR.W.	R.E.	J.G.B.	4-78	1/4" = 1'-0"	14014 199-A	1/2