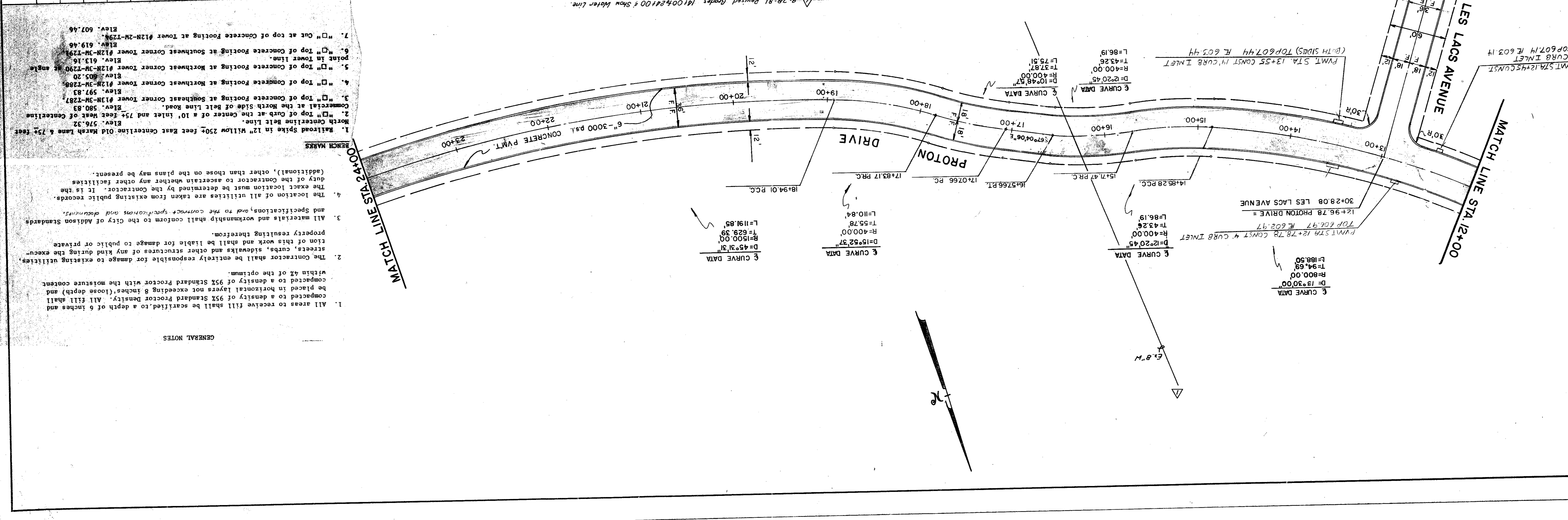
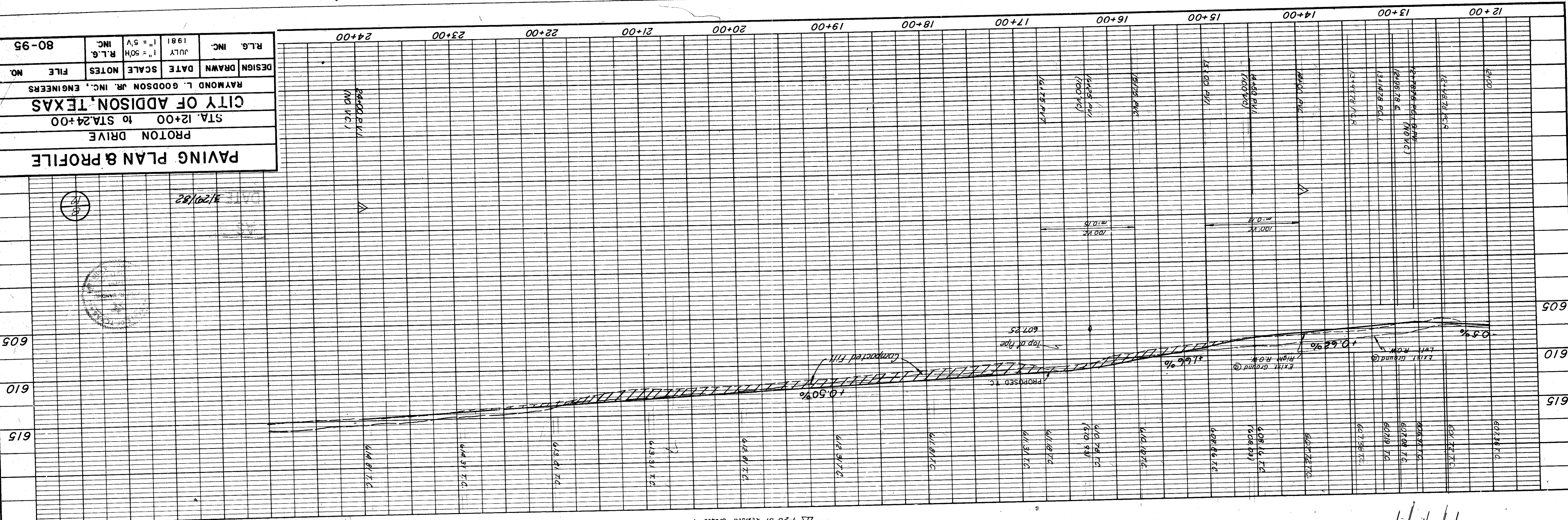


PROFILE	
DATE	BY
REVISION	BY
NOTED	BY
NO. OF SHEETS	TOTAL SHEETS
PROJECT NO.	
PROJECT NAME	
ENGINEER	
DATE	

PLAN	
DATE	BY
REVISION	BY
NOTED	BY
NO. OF SHEETS	TOTAL SHEETS
PROJECT NO.	
PROJECT NAME	
ENGINEER	
DATE	



- GENERAL NOTES**
- All areas to receive fill shall be scarified to a depth of 6 inches and compacted to a density of 95% Standard Proctor Density. All fill shall be placed in horizontal layers not exceeding 8 inches (loose depth) and compacted to a density of 95% Standard Proctor with the moisture content within 4% of the optimum.
 - The contractor shall be entirely responsible for damage to existing utilities, streets, curbs, sidewalks and other structures of any kind during the execution of this work and shall be liable for damage to public or private property resulting therefrom.
 - All materials and workmanship shall conform to the City of Addison Standards and Specifications, and to the contract specifications and drawings.
 - The location of all utilities are taken from existing public records. The exact location must be determined by the contractor. It is the duty of the contractor to ascertain whether any other facilities (additional), other than those on the plans may be present.
- BENCHMARKS**
- Railroad spike in 12" Willow 250' East Centerline Old Marsh Lane & 7 1/2' West North Centerline Belt Line. Elev. 576.32
 - Top of curb at the center of a 10' inlet and 7 1/2' West West of Centerline Commercial at the North Side of Belt Line Road. Elev. 580.83
 - Top of concrete footing at southeast corner tower #12N-3M-7287. Elev. 597.83
 - Top of concrete footing at Northwest corner tower #12N-3M-7288. Elev. 605.20
 - Top of concrete footing at Northwest corner tower #12N-3M-7290 at angle point in tower line. Elev. 613.16
 - Top of concrete footing at southeast corner tower #12N-3M-7291. Elev. 619.46
 - Cut at top of concrete footing at tower #12N-2M-7294. Elev. 607.46

PAVING PLAN & PROFILE	
PROTON DRIVE	
STA 12+00 TO STA 24+00	
CITY OF ADDISON, TEXAS	
RAYMOND L. GOODSON JR., INC., ENGINEERS	
DESIGN	DATE
DRAWN	SCALE
NOTES	R.L.G.
FILE	R.L.G.
NO.	INC.
80-95	1981
	JULY
	1" = 5' V
	1" = 50' H