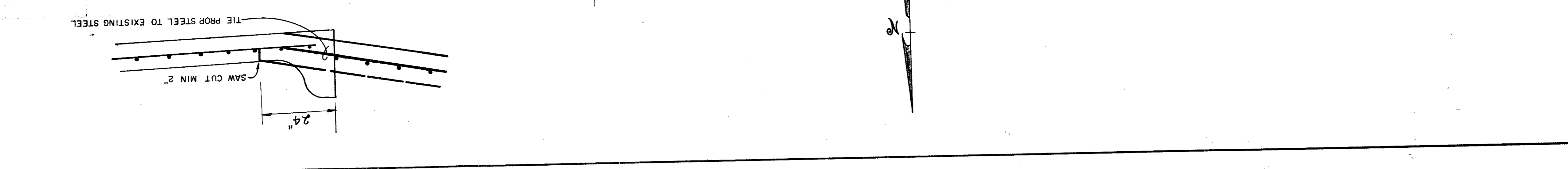
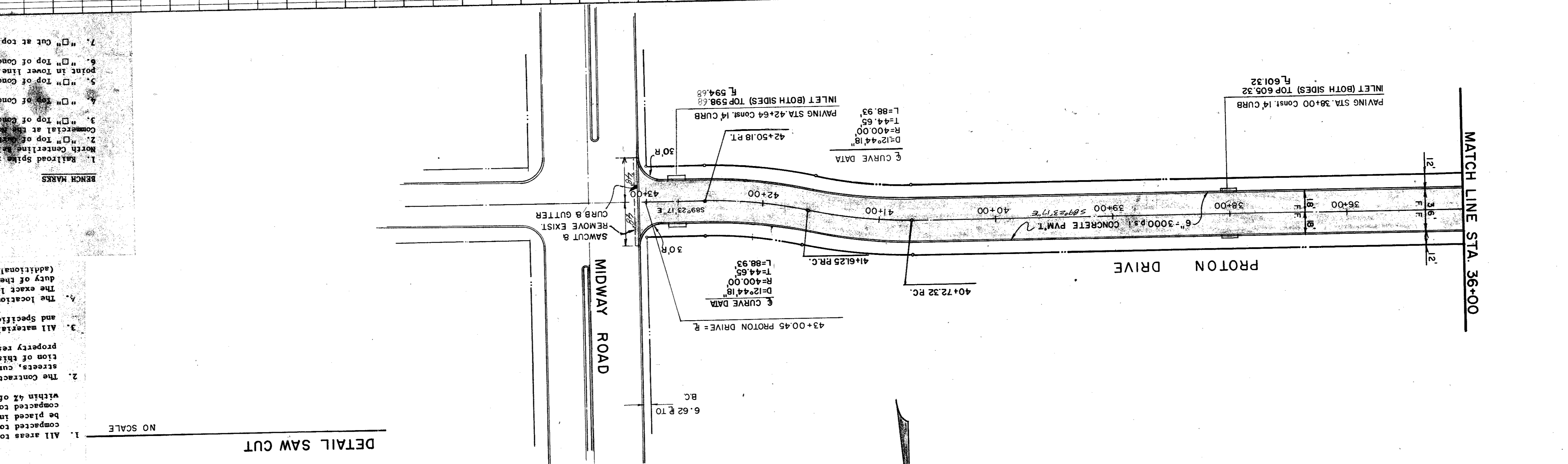
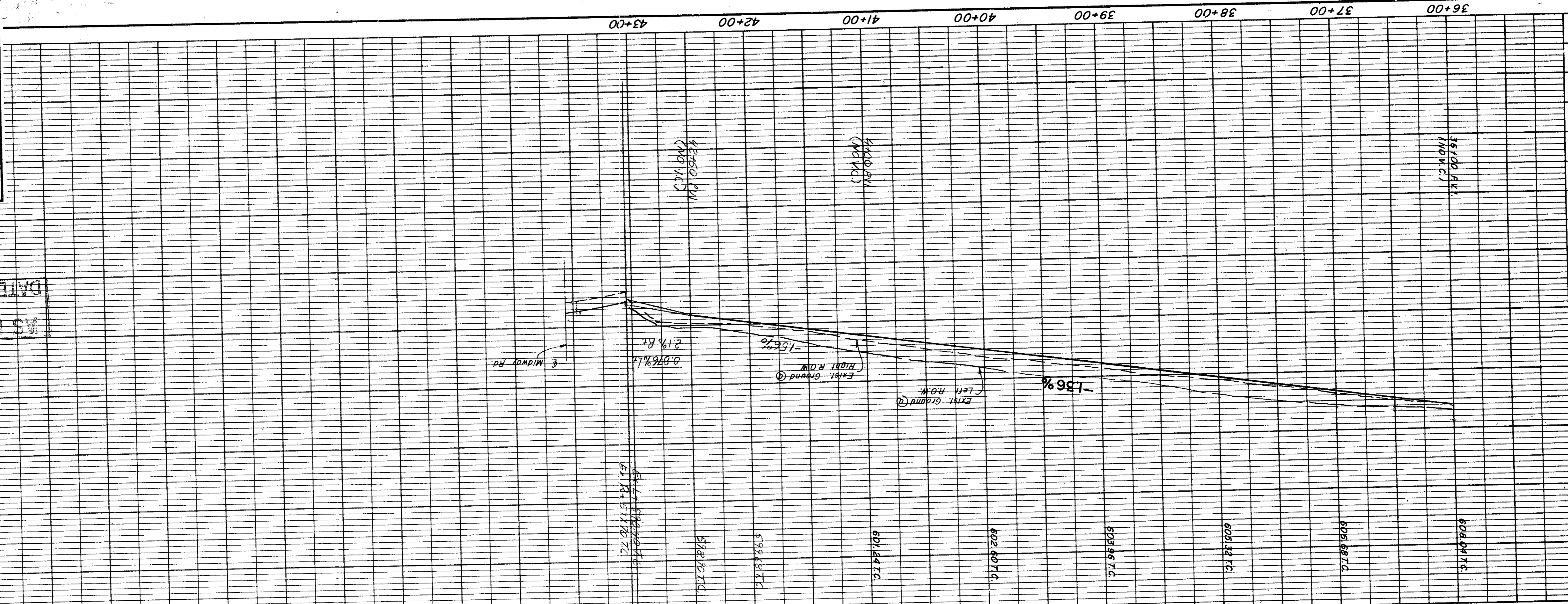


PROFILE	
DATE	BY
REVISIONS	
NO.	DATE
1	
2	
3	
4	
5	
6	
7	
8	
9	
10	
11	
12	
13	
14	
15	
16	
17	
18	
19	
20	
21	
22	
23	
24	
25	
26	
27	
28	
29	
30	
31	
32	
33	
34	
35	
36	
37	
38	
39	
40	
41	
42	
43	
44	
45	
46	
47	
48	
49	
50	
51	
52	
53	
54	
55	
56	
57	
58	
59	
60	
61	
62	
63	
64	
65	
66	
67	
68	
69	
70	
71	
72	
73	
74	
75	
76	
77	
78	
79	
80	
81	
82	
83	
84	
85	
86	
87	
88	
89	
90	
91	
92	
93	
94	
95	
96	
97	
98	
99	
100	

PLAN	
DATE	BY
REVISIONS	
NO.	DATE
1	
2	
3	
4	
5	
6	
7	
8	
9	
10	
11	
12	
13	
14	
15	
16	
17	
18	
19	
20	
21	
22	
23	
24	
25	
26	
27	
28	
29	
30	
31	
32	
33	
34	
35	
36	
37	
38	
39	
40	
41	
42	
43	
44	
45	
46	
47	
48	
49	
50	
51	
52	
53	
54	
55	
56	
57	
58	
59	
60	
61	
62	
63	
64	
65	
66	
67	
68	
69	
70	
71	
72	
73	
74	
75	
76	
77	
78	
79	
80	
81	
82	
83	
84	
85	
86	
87	
88	
89	
90	
91	
92	
93	
94	
95	
96	
97	
98	
99	
100	



GENERAL NOTES

- All areas to receive fill shall be scarified to a depth of 6 inches and compacted to a density of 95% Standard Proctor Density. All fill shall be placed in horizontal layers not exceeding 8 inches (loose depth) and compacted to a density of 95% Standard Proctor Density.
- The Contractor shall be entirely responsible for damage to existing utilities, streets, curbs, sidewalks and other structures of any kind during the execution of this work and shall be liable for damage to public or private property resulting therefrom.
- All materials and workmanship shall conform to the City of Addison Standard Specifications, and to the contract specifications and documents.
- The location of all utilities are taken from existing plans, records and Specifications, and to the contract specifications and documents.
- The exact location must be determined by the Contractor. It is the duty of the Contractor to ascertain whether any other facilities (additional), other than those on the plans may be present.

BENCH MARKS

- Railroad Spike in 1" Willow 250' East East Centerline Old Branch Line & 75' feet North Centerline Salt Line. Elev. 596.32
- "□" Top of curb at the Center of a 10' inlet and 75' feet West of centerline Commercial at the North Side of Mill Line Road. Elev. 580.83
- "□" Top of Concrete Footing at Southeast Corner Tower #12N-3M-121. Elev. 591.83
- "□" Top of Concrete Footing at Northwest Corner Tower #12N-3M-122. Elev. 605.20
- "□" Top of Concrete Footing at Northwest Corner Tower #12N-3M-123. Elev. 607.46
- "□" Top of Concrete Footing at Southwest Corner Tower #12N-3M-124. Elev. 613.16
- "□" Top of Concrete Footing at Northwest Corner Tower #12N-3M-125. Elev. 613.16
- "□" Out at top of concrete Footing at Tower #12N-2M-126. Elev. 607.46