

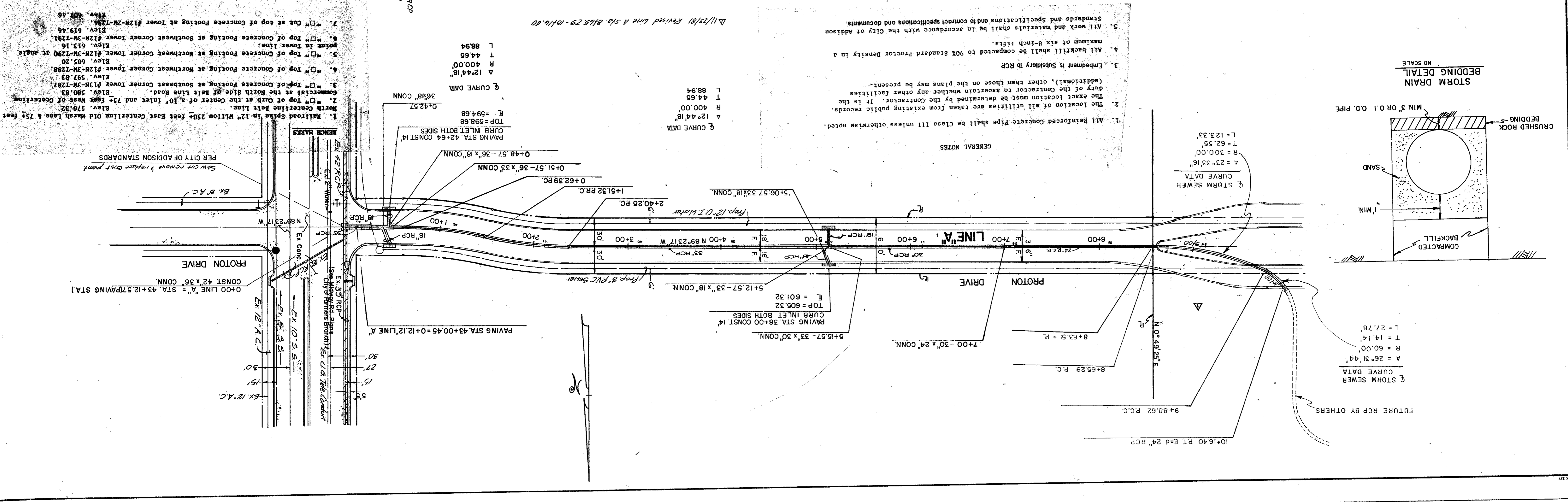
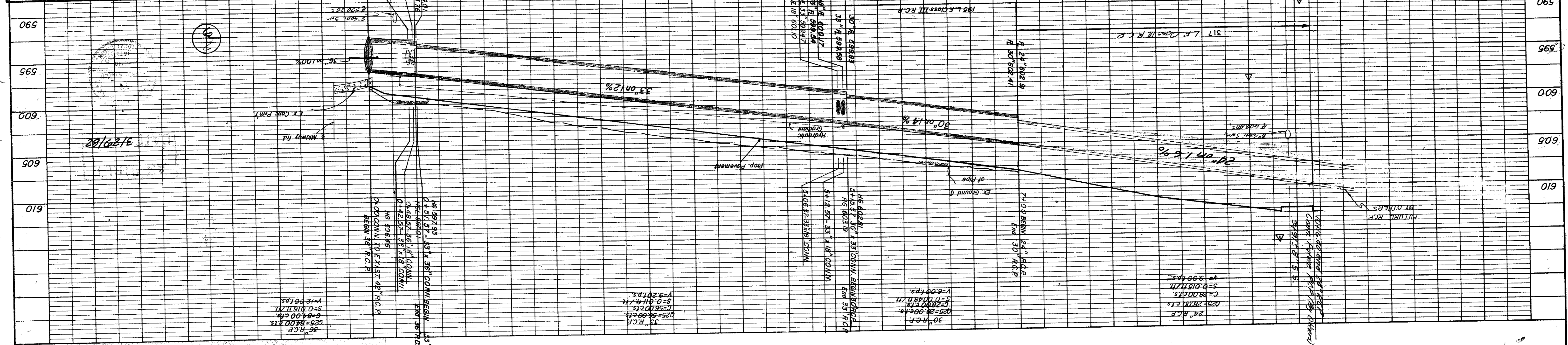
PROFILE	DATE	BY
REVISIONS:		
DATE	BY	DESCRIPTION

PLAN	DATE	BY
REVISIONS:		
DATE	BY	DESCRIPTION

STORM SEWER PLAN & PROFILE
LINE "A"

CITY OF ADDISON, TEXAS
RAYMOND L. GOODSON JR. INC., ENGINEERS

DESIGN NO.	FILE NO.
DATE	SCALE
R.L.G. INC.	1" = 50'
JULY 81	1" = 50'
R.L.G. INC.	1" = 50'
80-95	



- Railroad Spike in 12" Willow 250+ feet East Centerline Old Marsh Lane & 75+ feet North Centerline Belt Line.
- Top of Curb at the Center of a 10' Inlet and 75+ feet West of Centerline North Centerline Belt Line.
- Top of Concrete Footing at Southeast Corner Footing #12N-3M-1787.
- Top of Concrete Footing at Northwest Corner Footing #12N-3M-1788.
- Top of Concrete Footing at Northwest Corner Footing #12N-3M-1790 at angle point in Lower line.
- Top of Concrete Footing at Southwest Corner Footing #12N-3M-1791.
- Cut at top of Concrete Footing at Tower #12N-2M-1794.

PER CITY OF ADDISON STANDARDS
Saw cut remove & replace with pipe

PROTON DRIVE

0+00 LINE "A" = STA. 43+12.5 (PAVING STA)
CONST 42 X 36" CONN.

PAVING STA. 43+00.45 = 0+12.12 LINE "A"

PAVING STA. 38+00 CONST 14" CURB INLET BOTH SIDES

TOP = 605.32
L = 601.32

5+15.57 - 33' x 30" CONN.

PAVING STA. 42+64 CONST 14" CURB INLET BOTH SIDES

TOP = 598.68
L = 594.68

PAVING STA. 42+64 CONST 14" CURB INLET BOTH SIDES

0+48.57 - 36' x 18" CONN.

0+62.39 RC.

1+51.32 RC.

2+40.25 RC.

3+00 RCP

4+00 N 89° 23' 17" W 35" RCP

5+06.57 33' x 18" CONN.

5+12.57 - 33' x 18" CONN.

5+12.57 - 33' x 18" CONN.

6+55.29 P.C.

8+63.51 = R.

10+16.40 Pt. End 24" RCP

9+88.62 P.C.

10° 49' 26" E

30" STORM SEWER CURVE DATA
A = 26° 31' 44"
R = 60.00'
T = 14.14
L = 27.78

30" STORM SEWER CURVE DATA
A = 23° 33' 16"
R = 300.00'
T = 62.55
L = 123.33

GENERAL NOTES

- All Reinforced Concrete Pipe shall be Class III unless otherwise noted.
- The location of all utilities are taken from existing public records. It is the duty of the Contractor to ascertain whether any other facilities (additional), other than those on the plans may be present.
- Embedment is subsidiary to RCP.
- All backfill shall be compacted to 90% Standard Proctor Density in a maximum of six 6-inch lifts.
- All work and materials shall be in accordance with the City of Addison Standards and Specifications and to conform specifications and documents.