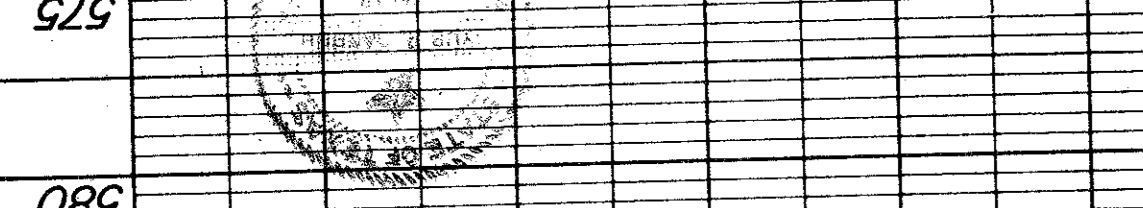


STORM SEWER PLAN & PROFILE		
LINE "D"		
CITY OF ADDISON, TEXAS		
RAYMOND L. GOODSON JR. INC., ENGINEERS		
DESIGN DRAWN	DATE	SCALE
RAYMOND L. GOODSON JR. INC., ENGINEERS	JULY, 81	1"=50'
FILE NO.	NOTES	R.L.G.
80-95		INC.

DATE: 3/20/82
AS BUILT



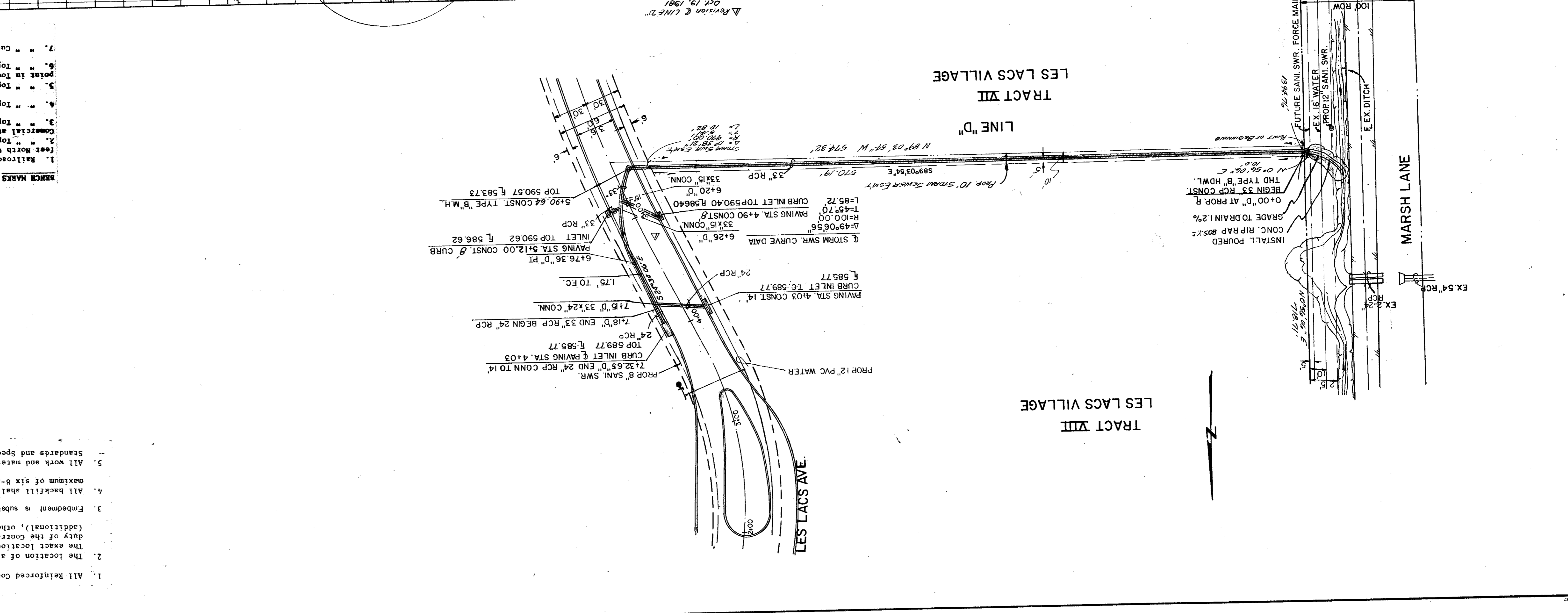
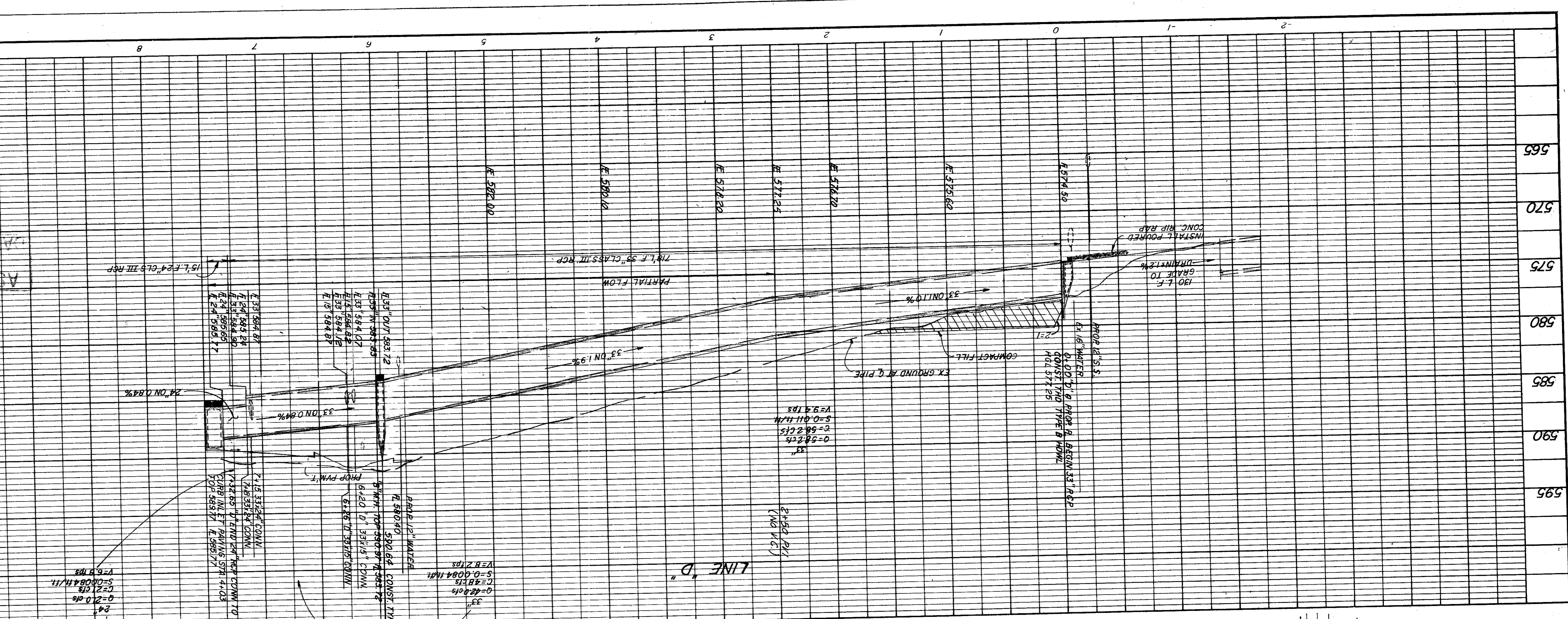
570	
575	
580	
585	
590	
595	

REVISION & LINE D
OCT 19, 1981

- REMARKS**
- Railroad Spike in 12" Willow 250' East Centerline Old March Lane & 75' Elev. 576.32
 - Top of Curb at the Center of a 10' Inlet and 75' East West of Centerline Commercial at the North Side of Belt Line Road. Elev. 580.83
 - Top of Concrete Footing at Southeast Corner Tower #12N-3M-7287 Elev. 597.83
 - Top of Concrete Footing at Northwest Corner Tower #12N-3M-7288 Elev. 605.20
 - Top of Concrete Footing at Northwest Corner Tower #12N-3M-7290 at angle Elev. 613.16
 - Top of Concrete Footing at Southwest Corner Tower #12N-3M-7291 Elev. 619.46
 - Top of Concrete Footing at Tower #12N-2M-1792 Elev. 607.46

- GENERAL NOTES**
- All Reinforced Concrete Pipe shall be Class III unless otherwise noted.
 - The location of all utilities are taken from existing public records. It is the duty of the Contractor to ascertain whether any other facilities (additional), other than those on the plans may be present.
 - Embedment is subsidiary to R.C.P.
 - All backfill shall be compacted to 90% Standard Proctor Density in a maximum of six 8-inch lifts.
 - All work and materials shall be in accordance with the City of Addison Standards and Specifications and to contract specifications and documents.

1. All work and materials shall be in accordance with the City of Addison Standards and Specifications and to contract specifications and documents.



PROFILE

DATE	
BY	
CHECKED	
APPROVED	
SCALE	
PROJECT	
NO. OF SHEETS	
TOTAL SHEETS	

PLAN

DATE	
BY	
CHECKED	
APPROVED	
SCALE	
PROJECT	
NO. OF SHEETS	
TOTAL SHEETS	