

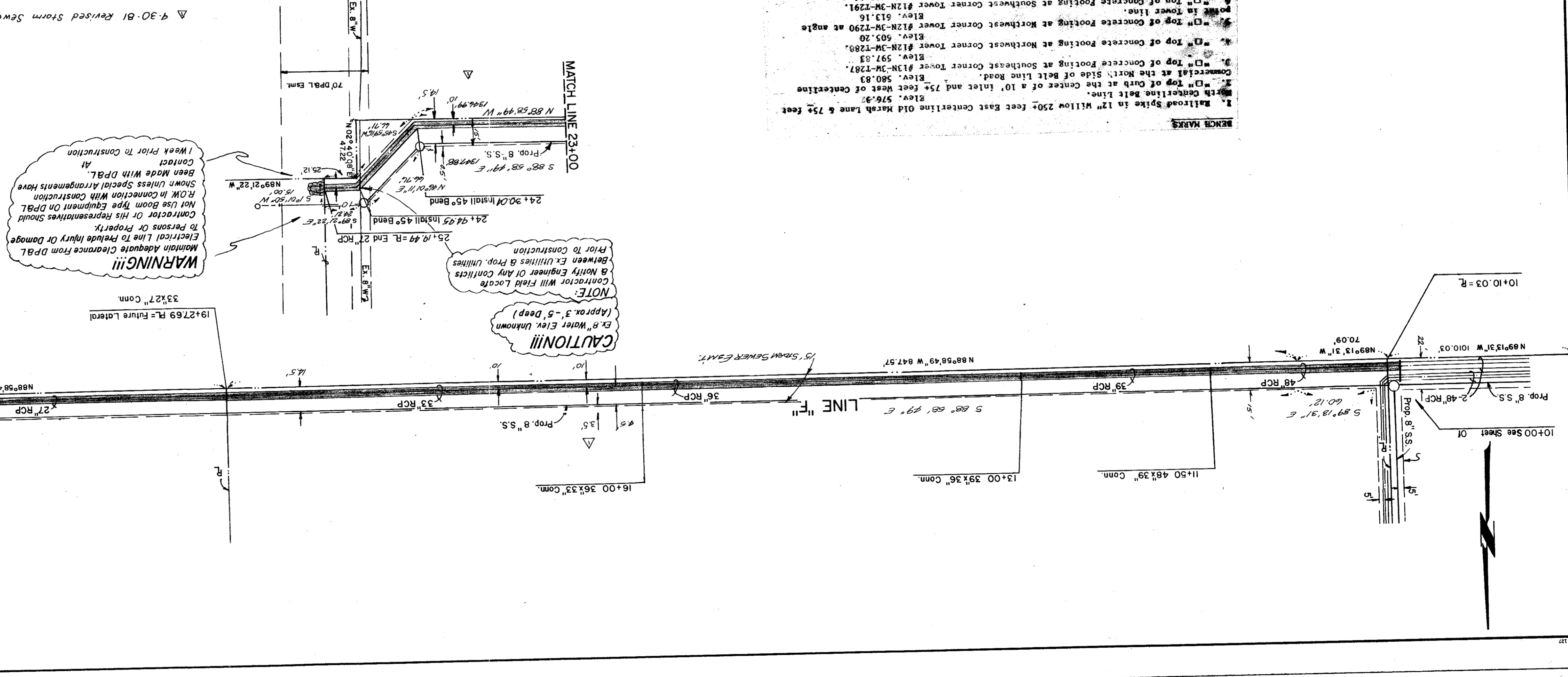
**CITY OF ADDISON, TEXAS**  
**RAYMOND L. GOODSON JR. INC., ENGINEERS**  
 DESIGN DRAWN DATE SCALE NOTES  
 R.L.G. INC. Aug-81 1"=50'H  
 FILE NO. 80-95

AS BUILT  
 DATE 9/29/82

**PROFILE**

|               |  |
|---------------|--|
| DATE          |  |
| BY            |  |
| CHECKED       |  |
| APPROVED      |  |
| SCALE         |  |
| PROJECT       |  |
| NO. OF SHEETS |  |
| SHEET NO.     |  |

- GENERAL NOTES**
- All Reinforced Concrete Pipe shall be Class III unless otherwise noted.
  - The location of all utilities are taken from existing public records. The exact location must be determined by the Contractor. It is the duty of the Contractor to ascertain whether any other facilities (additional), other than those on the plans may be present.
  - Embedment is subsidiary to RCP.
  - All backfill shall be compacted to 90% Standard Proctor Density in a maximum of six 8-inch lifts.
  - All work and materials shall be in accordance with the City of Addison Standards and Specifications and to contact specifications and documents.



- BENCH MARKS**
- Railroad Spike in 12" Willow 250' feet East Centerline Old Marsh Lane & 75' feet North Centerline Belt Line. Elev. 576.9.
  - Top of Curb at the Center of a 10' inlet and 75' feet West of Centerline. Elev. 580.83.
  - Top of Concrete Footing at Southeast Corner Tower #13N-3M-1287. Elev. 597.83.
  - Top of Concrete Footing at Northwest Corner Tower #12N-3M-1288. Elev. 505.20.
  - Top of Concrete Footing at Northwest Corner Tower #12N-3M-1290 at angle. Elev. 513.16.
  - Top of Concrete Footing at Southwest Corner Tower #12N-3M-1291. Elev. 619.46.
  - Top of Concrete Footing at Tower #12N-2W-1294. Elev. 607.46.

**WARNING!!!**  
 Maintain Adequate Clearance from D.P.A.L. to Persons or Property.  
 Contractor or His Representatives Should Not Use Boom Type Equipment On D.P.A.L. Show Unless Special Arrangements Have Been Made with D.P.A.L. Contact At Least One Week Prior to Construction.

**CAUTION!!!**  
 Ex. Water Elev. Unknown (Approx. 3'-5' Deep)  
 Contractor Will Find Location Between Ex. Utilities & Prop. Utilities A Notify Engineer of Any Conflicts Prior to Construction.

**PLAN**

|               |  |
|---------------|--|
| DATE          |  |
| BY            |  |
| CHECKED       |  |
| APPROVED      |  |
| SCALE         |  |
| PROJECT       |  |
| NO. OF SHEETS |  |
| SHEET NO.     |  |