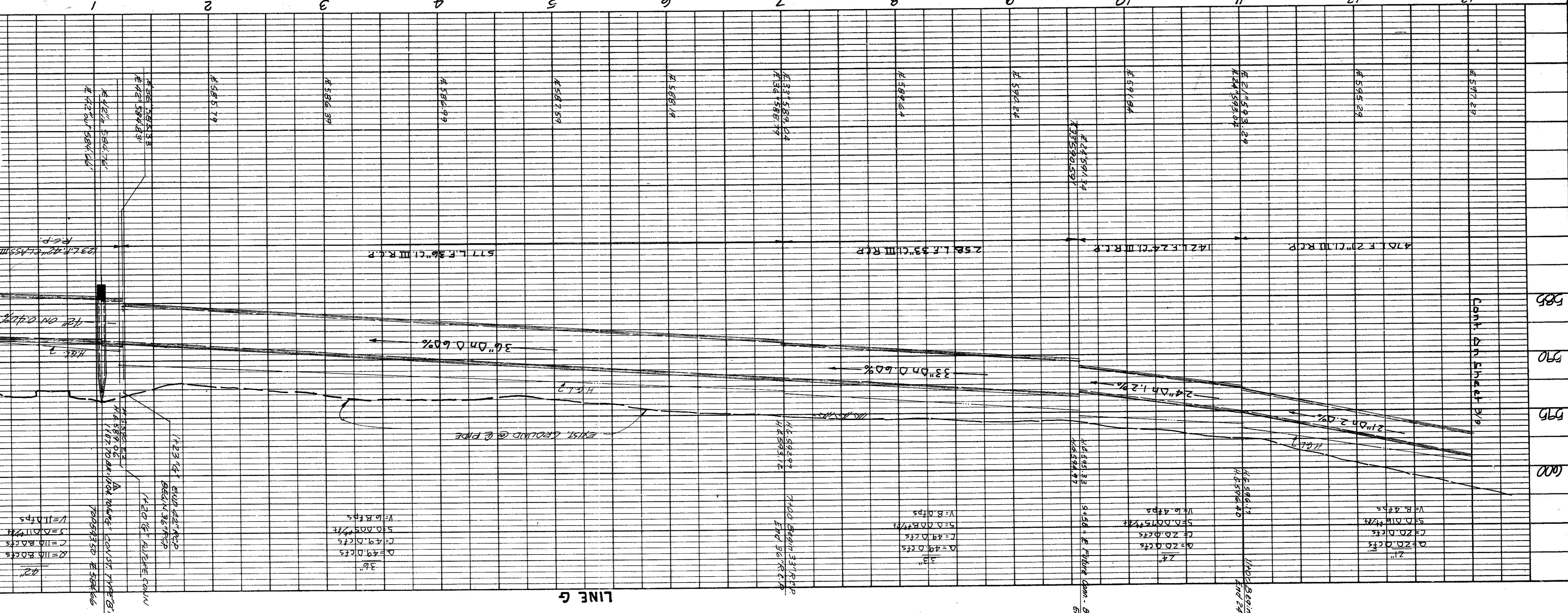
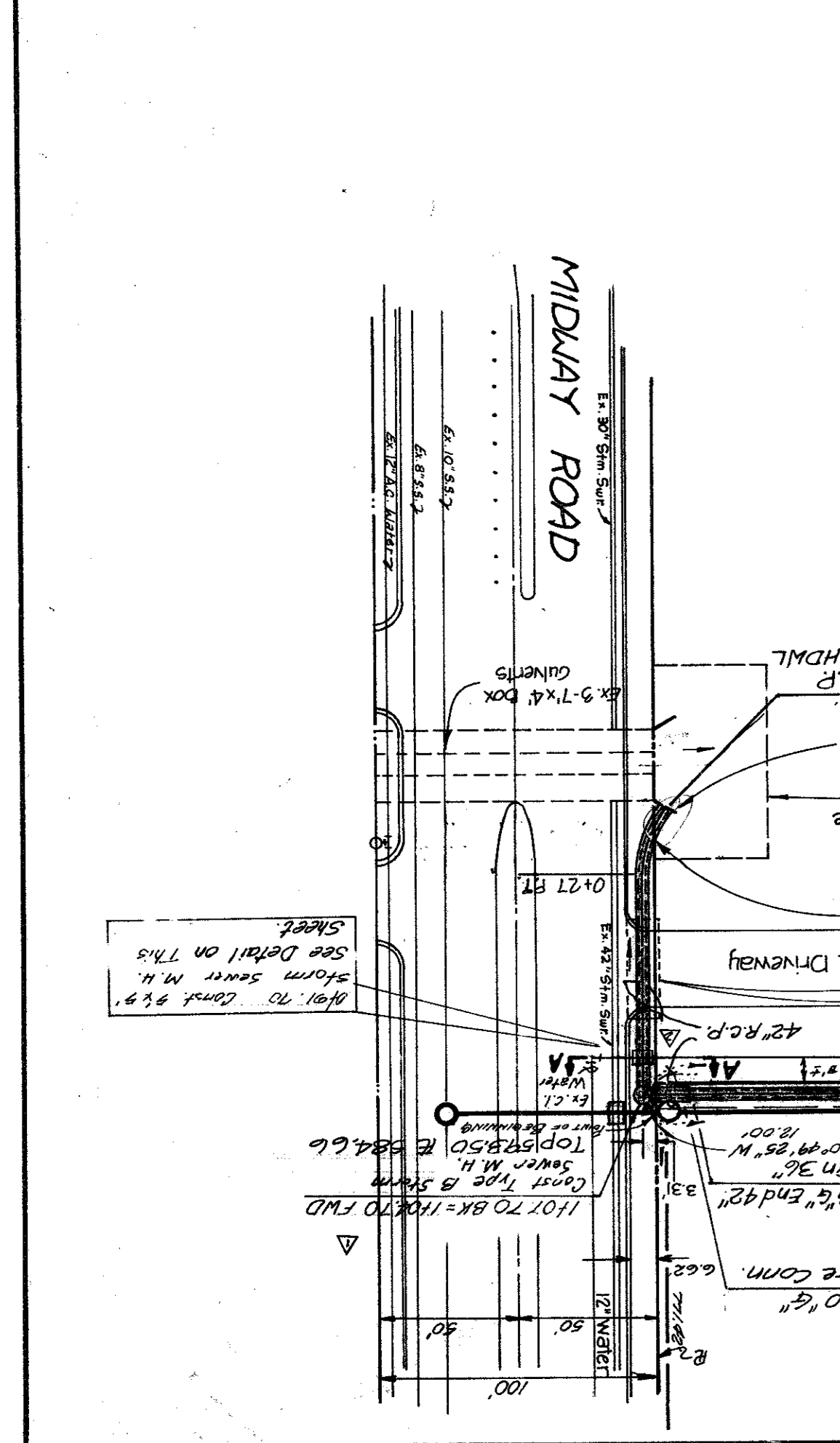


NO.	DATE	BY	REVISION
1			AS BUILT

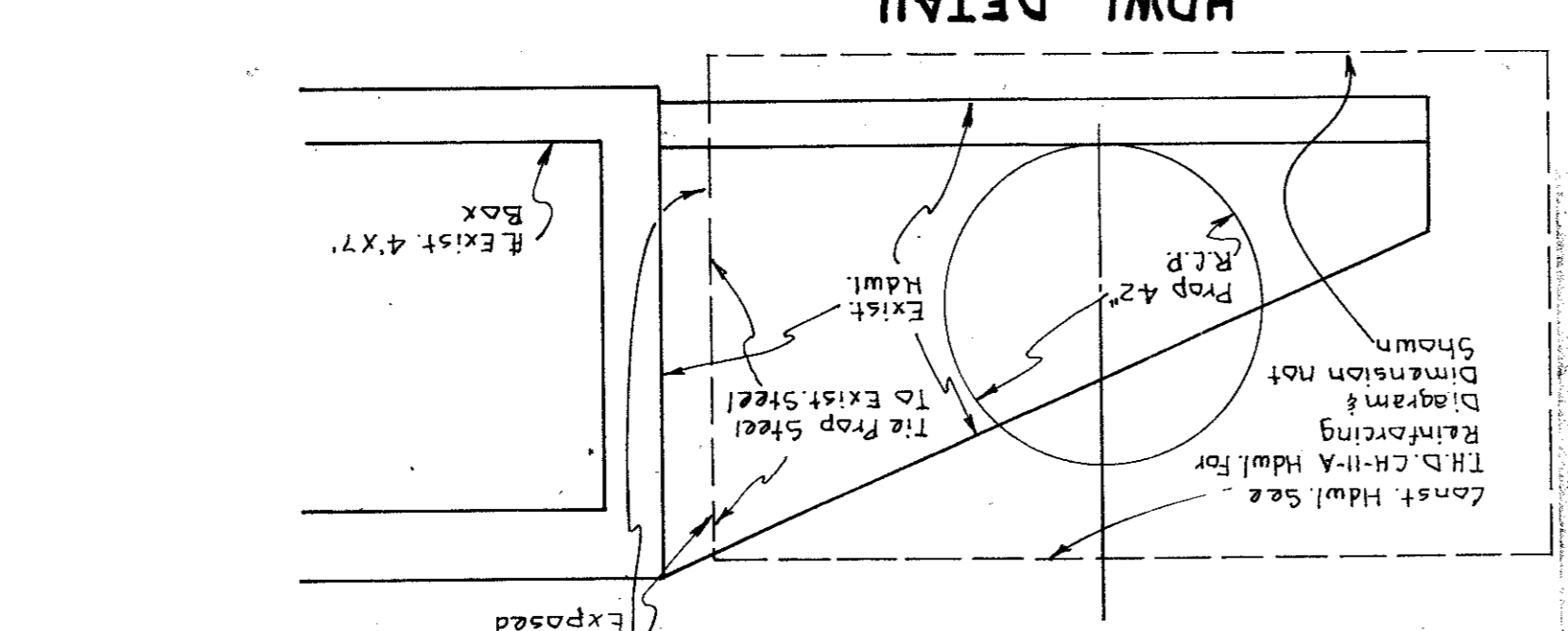
NO.	DATE	BY	REVISION
1			AS BUILT

80-95	FILE NO.
RAYMOND L. GOODSON JR. INC., ENGINEERS	DESIGNER
SCALE	DATE
NOTES	DESIGN DRAWN
R.L.G. INC.	R.L.G. INC.
JULY 81	JULY 81
1"=50'	1"=50'
INC.	INC.

**STORM SEWER PLAN & PROFILE**  
**LINE "G"**  
**AS BUILT**  
**DATE 3/20/82**



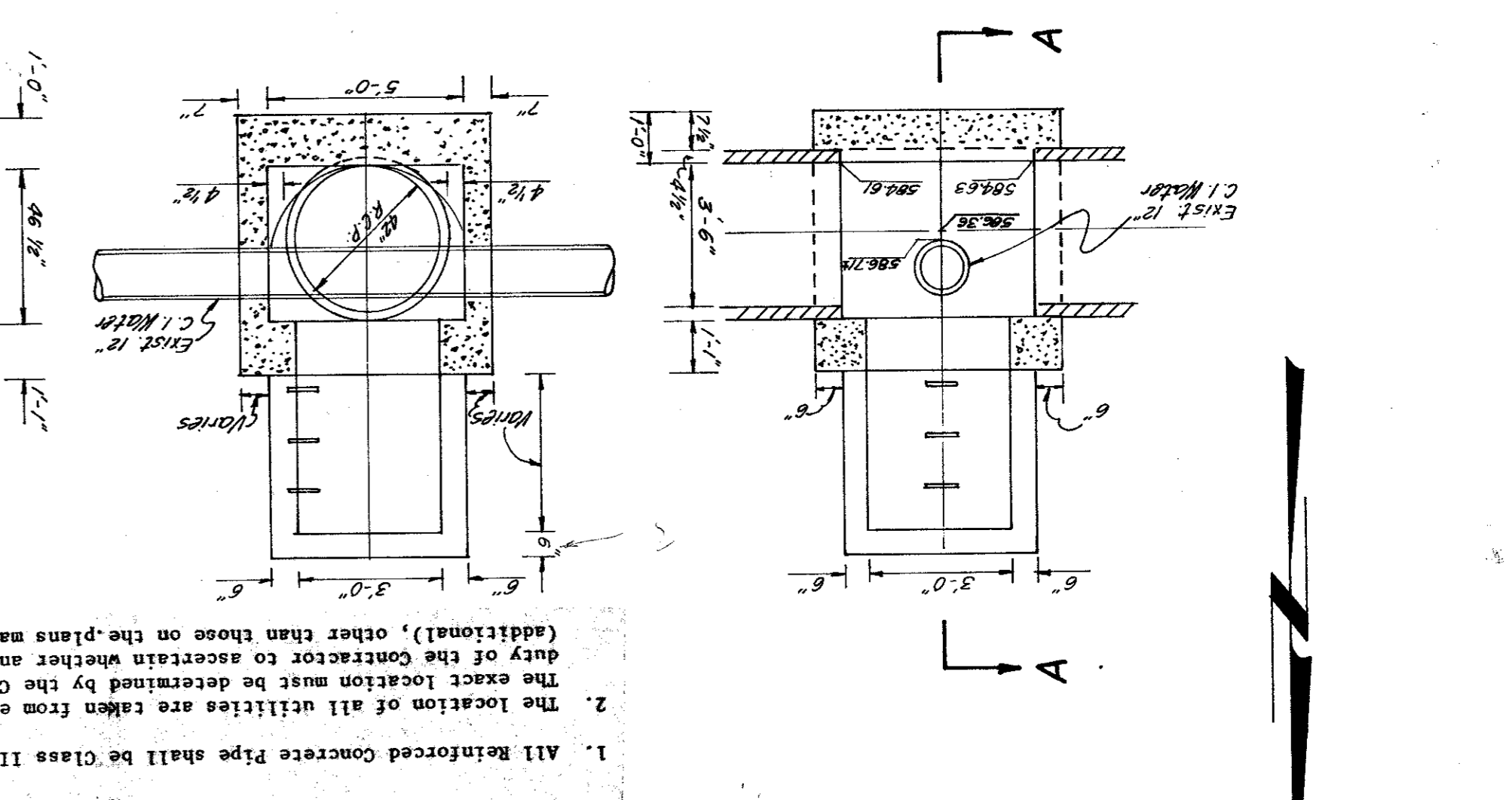
**LINE "G"**  
 NOTE: All Exposed Corners shall be Chamfered 3/4".  
 SCALE: 1"=2'



- REMARKS**
- Railroad Spike in 12" Willow 250' East Centerline Old Marsh Lane & 75' East North Centerline Belt Line. Elev. 576.32
  - Top of curb at the center of a 10' inlet and 75' East West of Centerline Commercial at the North Side of Belt Line Road. Elev. 580.83
  - Top of concrete footing at Southwest Corner Tower #12N-3M-1287. Elev. 597.87
  - Top of concrete footing at Northwest Corner Tower #12N-3M-1288. Elev. 605.20
  - Top of concrete footing at Northwest Corner Tower #12N-3M-1290 at angle point in Tower Line. Elev. 613.16
  - Top of concrete footing at Southwest Corner Tower #12N-3M-1291. Elev. 619.66
  - Cut at top of concrete footing at Tower #12N-2M-1294. Elev. 607.46

**GENERAL NOTES**

- All reinforced concrete pipe shall be Class III unless otherwise noted.
- The location of all utilities are taken from existing public records. The exact location must be determined by the contractor. It is the duty of the contractor to ascertain whether any other facilities (additional), other than those on the plans may be present.
- Embodiment is subsidiary to R.C.P.
- All backfill shall be compacted to 90% Standard Proctor Density in a maximum of six 8-inch lifts.
- All work and materials shall be in accordance with the City of Addison Standards and Specifications and to contract specifications and documents.



**HWL DETAIL**  
 SCALE: 1"=2'  
 NOTE: All Exposed Corners shall be Chamfered 3/4".  
 DATE 3/20/82

