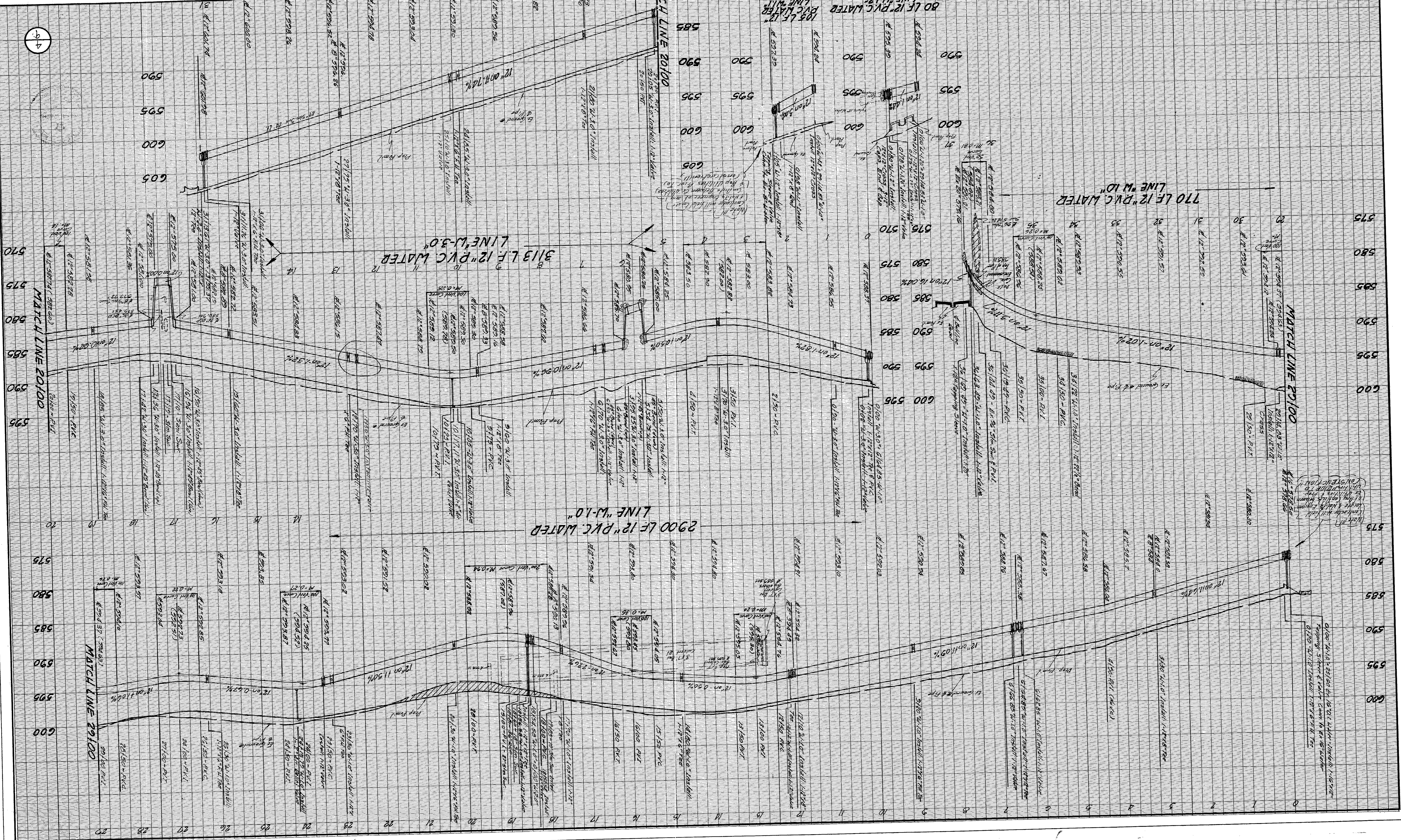


- BENCHMARKS**
1. Railroad Spike in 12" Willow 250' feet East Centerline Old March Lane & 75' feet North Centerline Belt Line. Elev. 576.32
 2. "C" Top of Concrete Footing at Southeast Corner Tower #13N-3M-1287. Elev. 580.83
 3. "C" Top of Concrete Footing at Southeast Corner Tower #13N-3M-1287. Elev. 580.83
 4. "C" Top of Concrete Footing at Northwest Corner Tower #12N-3M-1288. Elev. 597.83
 5. "C" Top of Concrete Footing at Northwest Corner Tower #12N-3M-1290 at angle. Elev. 605.80
 6. "C" Top of Concrete Footing at Southwest Corner Tower #12N-3M-1291. Elev. 613.16
 7. "C" Top of Concrete Footing at Tower #12N-2M-1296. Elev. 607.46

| | | | | | | |
|------------|------|--------|-----------|-------|------|----|
| DESIGN NO. | FILE | SCALE | DATE | DRAWN | DATE | BY |
| DLG 216 | | 1"=20' | July 1981 | DLG | | |

CITY OF ADDISON, TEXAS
 RAYMOND L. GOODSON JR., INC., ENGINEERS
 LINES "W-1.0", "W-3.0", "W-1.1", "W-1.2"

AS BUILT
 DATE 3/29/82



9
 4