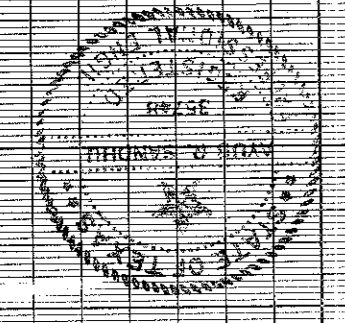
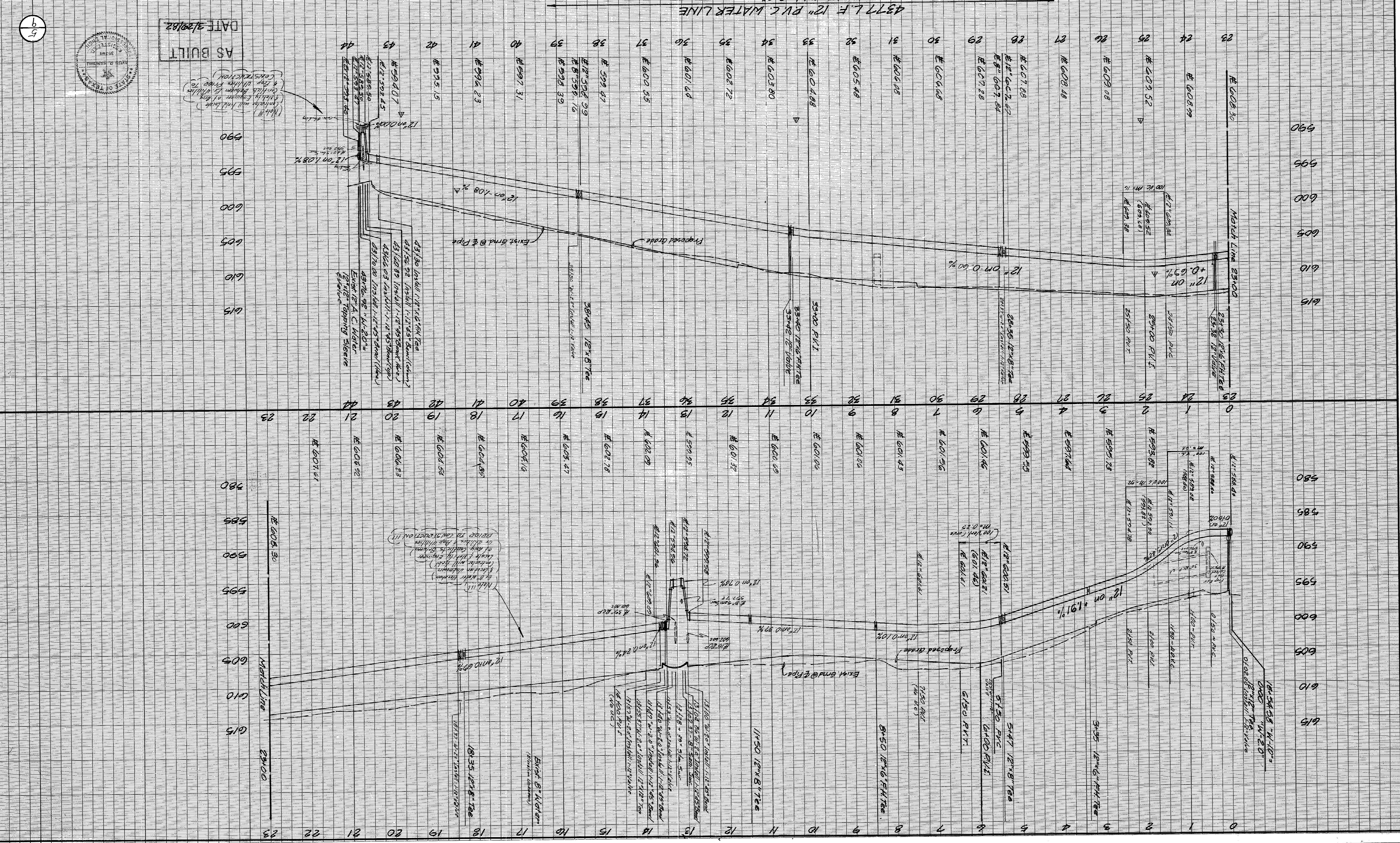


DESIGN NO.	FILE	NOTES	SCALE	DATE	DRAWN	R.L.G.	DATE	SCALE	DATE	DRAWN	R.L.G.
RAYMOND L. GOODSON JR. INC., ENGINEERS											
CITY OF ADDISON, TEXAS											
WATER PROFILE											
LINE "M-20"											

**BENCH MARKS**

- Railroad spike in 12" Willow 250' East Centerline Old Marsh Lane & 75' East of Centerline at the North Side of Belt Line Road.  
Elev. 580.83
- "□" Top of Concrete Footing at Northwest Corner Tower #12N-3M-1288.  
Elev. 597.43
- "□" Top of Concrete Footing at Northwest Corner Tower #12N-3M-1290.  
Elev. 613.16
- "□" Top of Concrete Footing at Northwest Corner Tower #12N-3M-1291.  
Elev. 619.46
- "□" Top of Concrete Footing at Northwest Corner Tower #12N-3M-1292.  
Elev. 607.46
- "□" Top of Concrete Footing at Northwest Corner Tower #12N-3M-1293.  
Elev. 619.46
- "□" Top of Concrete Footing at Northwest Corner Tower #12N-3M-1294.  
Elev. 619.46
- "□" Top of Concrete Footing at Northwest Corner Tower #12N-3M-1295.  
Elev. 619.46
- "□" Top of Concrete Footing at Northwest Corner Tower #12N-3M-1296.  
Elev. 619.46
- "□" Top of Concrete Footing at Northwest Corner Tower #12N-3M-1297.  
Elev. 619.46
- "□" Top of Concrete Footing at Northwest Corner Tower #12N-3M-1298.  
Elev. 619.46
- "□" Top of Concrete Footing at Northwest Corner Tower #12N-3M-1299.  
Elev. 619.46
- "□" Top of Concrete Footing at Northwest Corner Tower #12N-3M-1300.  
Elev. 619.46

Revised 10-21-81 Changed Grades & Flow Lines.



DATE 3/29/82  
AS BUILT