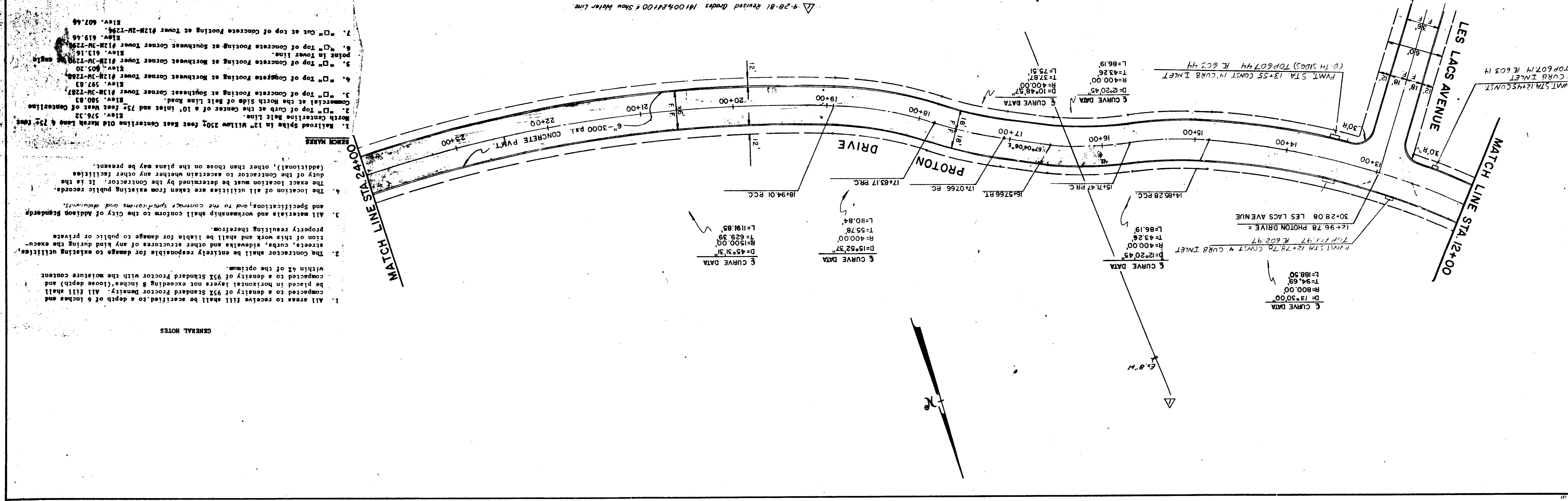
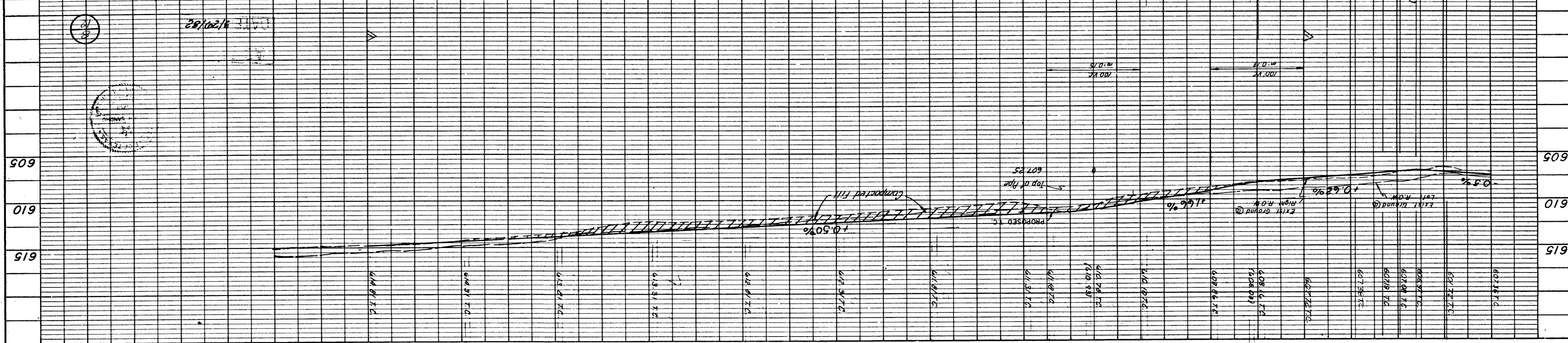


PROFILE	
DATE	BY
REVISION	BY
APPROVED	BY
DESIGNED	BY
DRAWN	BY
CHECKED	BY
IN CHARGE	BY
PROJECT	NO.
DATE	BY

PLAN	
DATE	BY
REVISION	BY
APPROVED	BY
DESIGNED	BY
DRAWN	BY
CHECKED	BY
IN CHARGE	BY
PROJECT	NO.
DATE	BY

PAVING PLAN & PROFILE	
PROTON DRIVE	
STA. 12+00 to STA. 24+00	
CITY OF ADDISON, TEXAS	
RAYMOND L. GOODSON JR., INC., ENGINEERS	
DESIGN NO.	FILE NO.
DATE	SCALE
1981	1" = 50'
JULY	R.L.G.
INC.	R.L.G.
80-95	



- GENERAL NOTES**
- All areas to receive fill shall be scarified to a depth of 6 inches and compacted to a density of 95% Standard Proctor density. All fill shall be placed in horizontal layers not exceeding 8 inches (loose depth) and compacted to a density of 95% Standard Proctor density.
 - The Contractor shall be entirely responsible for damage to existing utilities, streets, curbs, sidewalks and other structures of any kind during the execution of this work and shall be liable for damage to public or private property resulting therefrom.
 - All materials and workmanship shall conform to the City of Addison Standards and Specifications, and to the contract specifications and drawings.
 - The location of all utilities are taken from existing public records, (additional), other than those on the plans may be present.
 - The exact location must be determined by the Contractor. It is the duty of the Contractor to ascertain whether any other facilities
 1. Railroad spurs in 12" Willow 250' feet East Centerline Old Marsh Lane & 75' East North Centerline Bolt Line. Elev. 576.32
 2. "□" Top of Cut at the center of a 10' inlet and 75' feet West of Centerline North Centerline Bolt Line. Elev. 580.83
 3. "□" Top of Concrete Footing at Southeast Corner Tower #13N-3W-7287. Elev. 597.83
 4. "□" Top of Concrete Footing at Northwest Corner Tower #12N-3W-7288. Elev. 605.20
 5. "□" Top of Concrete Footing at Northwest Corner Tower #12N-3W-7290. Elev. 613.16
 6. "□" Top of Concrete Footing at Southeast Corner Tower #12N-3W-7281. Elev. 615.48
 7. "□" Cut at top of concrete Footing at Tower #12N-3W-7286. Elev. 607.46

9-28-81 Revised Grades 141.00%±1.00 ± Show Water Line