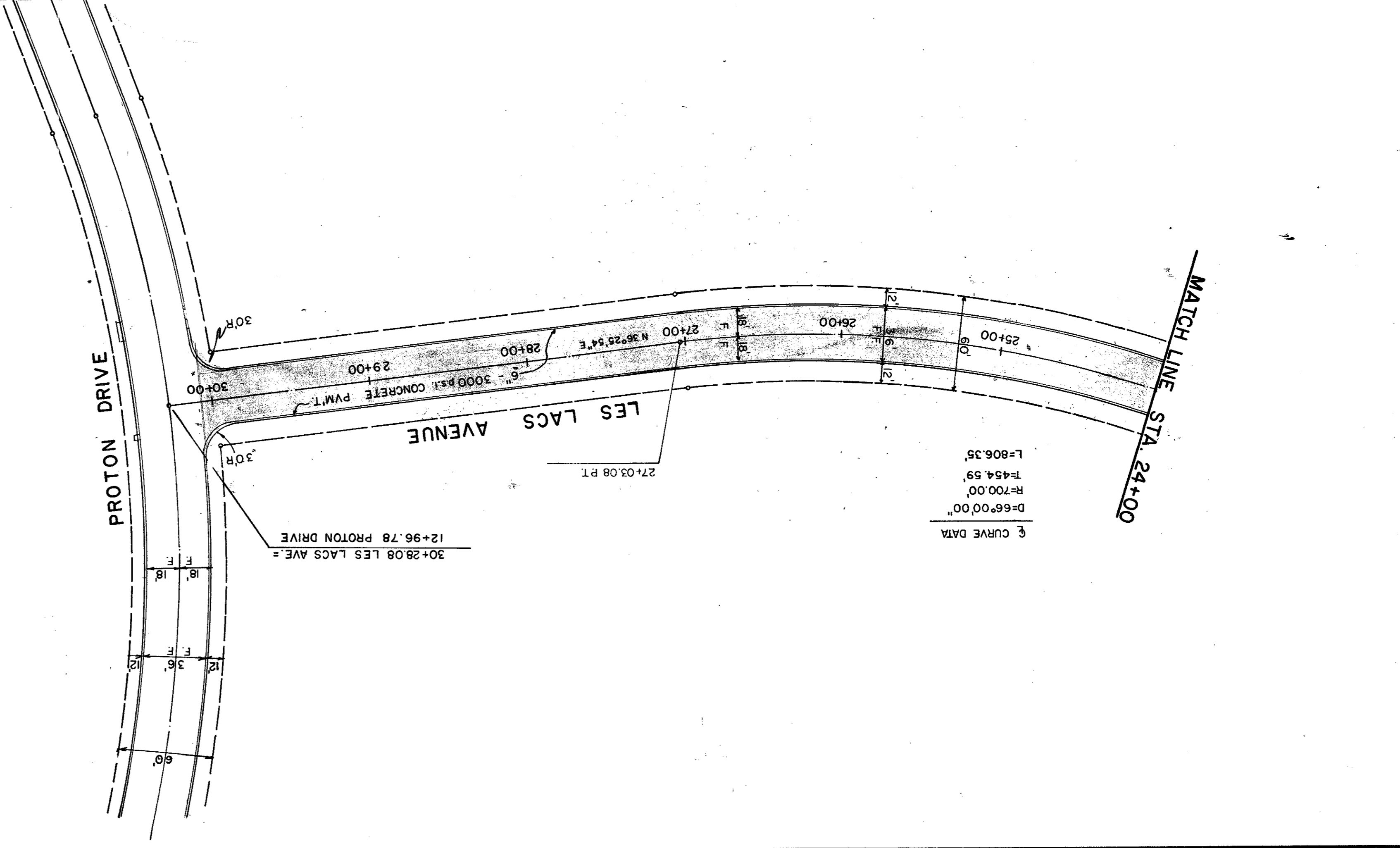


PROFILE	
DATE	BY
NO.	NO.
REVISIONS	BY
DATE	BY

PLAN	
DATE	BY
NO.	NO.
REVISIONS	BY
DATE	BY

80-95	FILE NO.
RAYMOND L. GOODSON JR. INC., ENGINEERS	DESIGNER
CITY OF ADDISON, TEXAS	CLIENT
LES LACS AVENUE	PROJECT
STA. 24+00 TO PROTON DRIVE	SECTION
AS BUILT	DATE
DATE 12/20/82	DATE
1981	YEAR
JULY	MONTH
1"=50'	SCALE
1"=50'	SCALE
INC.	SCALE
INC.	SCALE
80-95	FILE NO.



- BENCH MARKS**
- Railroad Spike in 12" Willow 250' feet East Centerline Old North Lane & 75' feet North Centerline Belt Line. Elev. 576.38
 - Top of Curb at the Center of a 10' Inlet and 75' feet West of Centerline Commercial at the North Side of Belt Line Road. Elev. 580.83
 - Top of Concrete Footing at Southeast Corner Tower #12N-3W-1291. Elev. 597.83
 - Top of Concrete Footing at Northwest Corner Tower #12N-3W-1288. Elev. 605.30
 - Top of Concrete Footing at Northwest Corner Tower #12N-3W-1290 at angle point in Tower Line. Elev. 613.88
 - Top of Concrete Footing at Southeast Corner Tower #12N-3W-1291. Elev. 619.46
 - Cut at top of Concrete Footing at Tower #12N-3W-1294. Elev. 607.46

- GENERAL NOTES**
- All areas to receive fill shall be scarified to a depth of 6 inches and compacted to a density of 95% Standard Proctor Density. All fill shall be placed in horizontal layers not exceeding 8 inches (loose depth) and compacted to a density of 95% Standard Proctor with the moisture content within 4% of the optimum.
 - The Contractor shall be entirely responsible for damage to existing utilities, streets, curbs, sidewalks and other structures of any kind during the execution of this work and shall be liable for damage to public or private property resulting therefrom.
 - All materials and workmanship shall conform to the City of Addison Standards and Specifications, and to contract specifications and drawings.
 - The location of all utilities are taken from existing public records. The exact location must be determined by the Contractor. It is the duty of the Contractor to ascertain whether any other facilities (additional), other than those on the plans may be present.