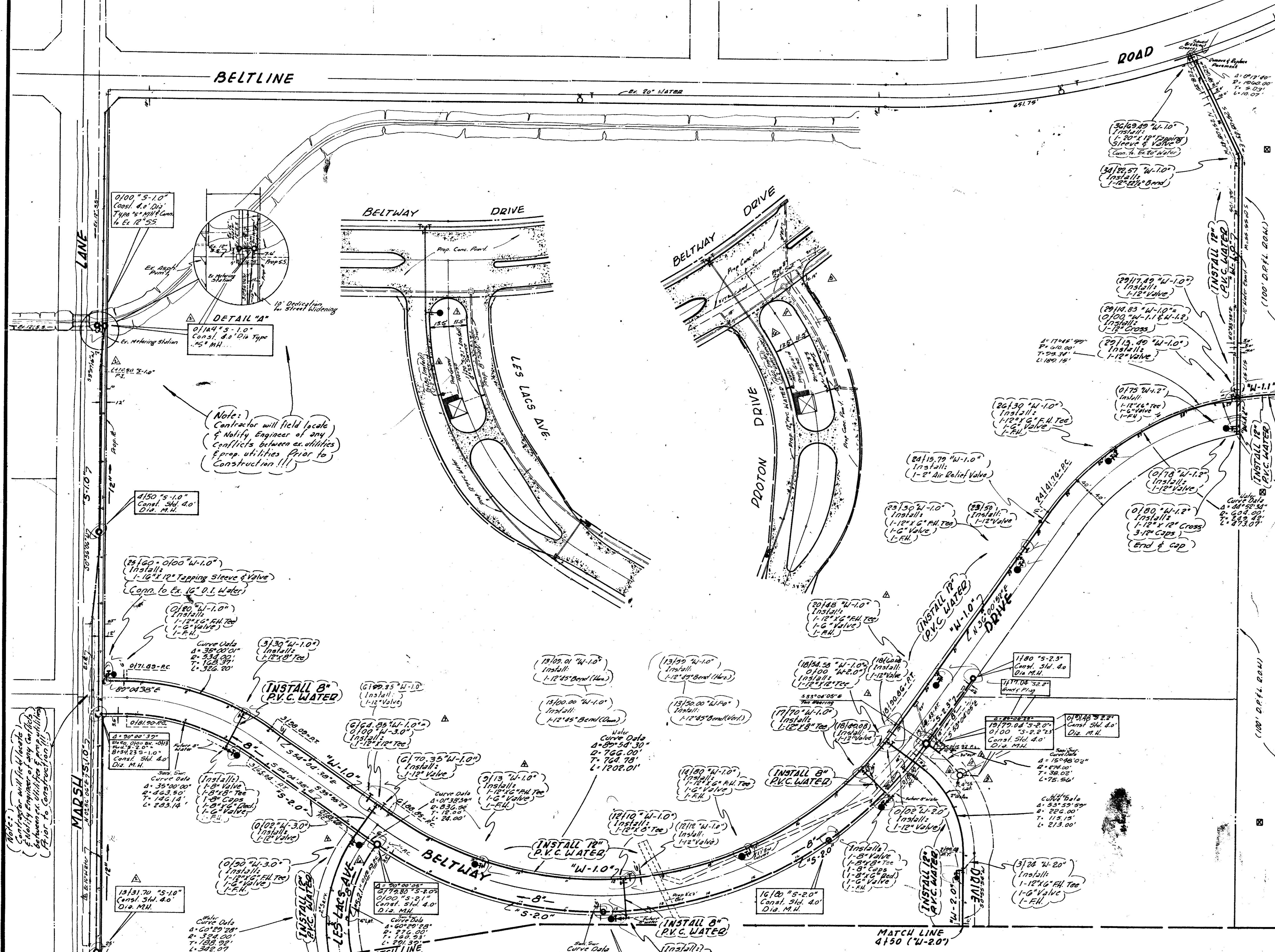


- All water mains shall be PVC Class 200 water pipe.
- All water mains shall have a minimum cover below finished grades as follows: 6" & 8" - 48", 12" - 60", or as required to clear other utilities.
- The location of all utilities are taken from existing public records. The exact location must be determined by the Contractor. It is the duty of the contractor to ascertain whether any other facilities (additional), other than those on the plans may be present.
- All utility trenches under proposed paving shall be backfilled and compacted to 90% Standard Proctor Density.
- All manholes, cleanouts, valve boxes, fire hydrants, etc., must be adjusted to proper line and grade by the Contractor after placing of permanent paving.
- All work and materials shall be in accordance with the City of Addison Standard Specifications.
- Contractor shall be responsible for providing "as-built" plans to the Engineer showing the location of sewer service by distance to the lot lines.

NOTE: Contractor will field locate & notify Engineer of any conflicts between ex. utilities & prop. utilities prior to construction!!!

NOTE: Contractor will field locate & notify Engineer of any conflicts between ex. utilities & prop. utilities prior to construction!!!



NOTE: Contractor will field locate & notify Engineer of any conflicts between ex. utilities & prop. utilities prior to construction!!!

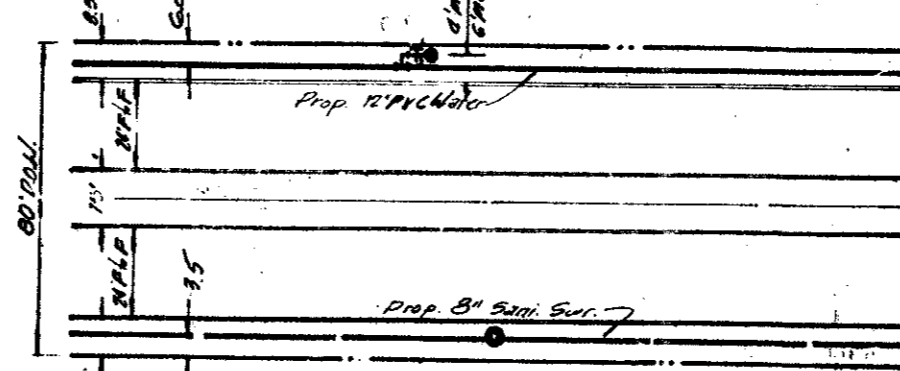
Note: Contractor will field locate & notify Engineer of any conflicts between ex. utilities & prop. utilities prior to construction!!!

MATCH LINE 1410 (5-1.0)

MATCH LINE 5150 (W-3.0)

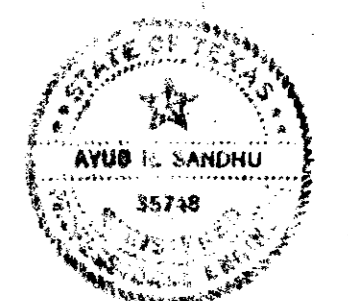
TYPICAL UTILITY LOCATION DETAIL (60' RAD. AT SCALE)

MATCH LINE 4150 (W-2.0)



TYPICAL UTILITY LOCATION DETAIL (60' RAD. AT SCALE)

- Revised Stations & Curve Data Line "5-2.0" "5-2.1" "5-2.3"
- 9/17/81 Revised alignment and stations Sanitary Sur. Line "5-1.0", and Revised location exist 16" water on Marsh Lane
- 10/28/81 Misd Sanitary Sewer Curve Data "5.2"
- 12/10/81 Revised Line "5.2" "6" Lateral
- 12/10/81 Revised Guard House Utilities
- 3/20/82 Revised As Per As Pulls



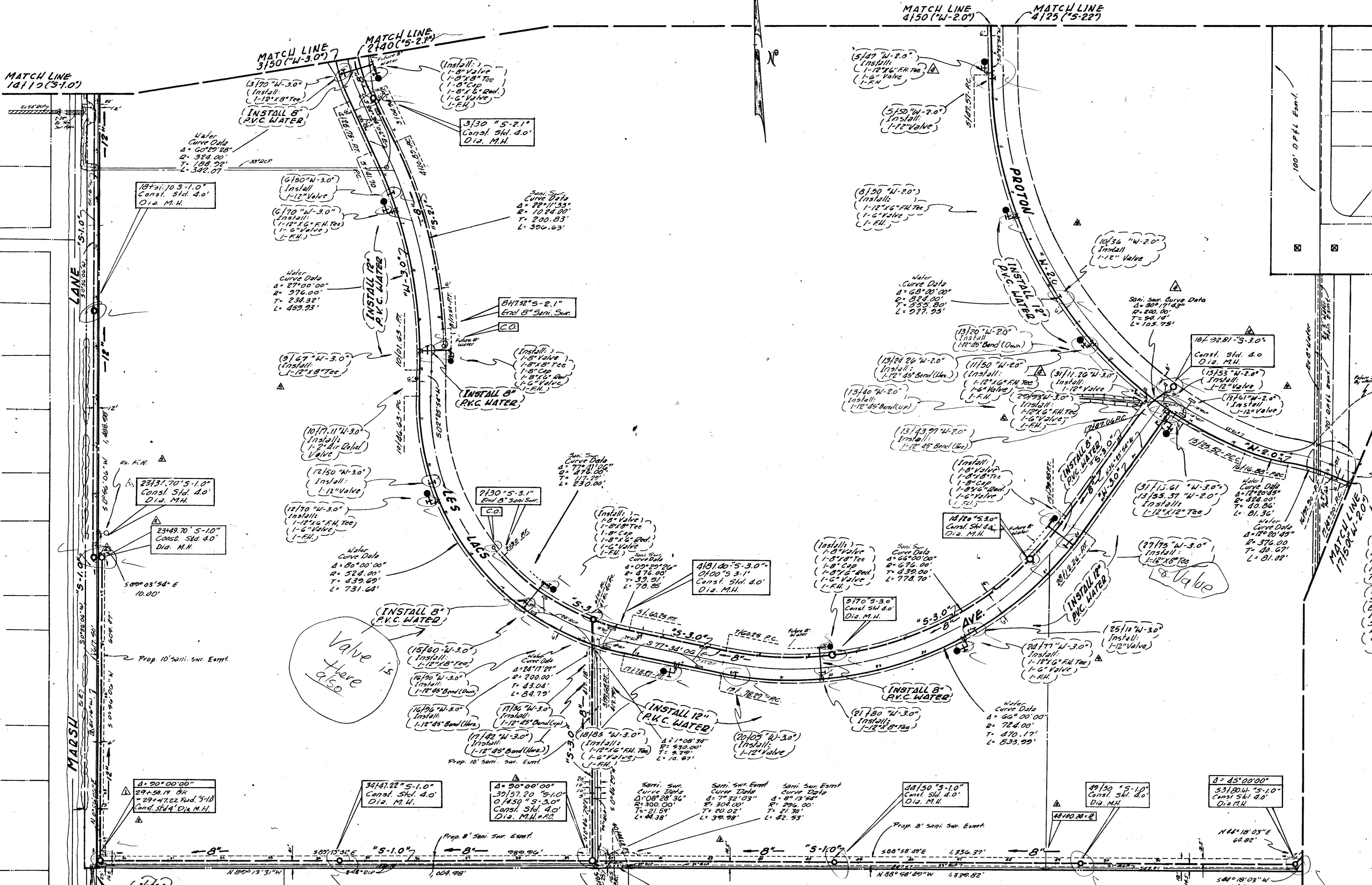
3/20/82

WATER & SANITARY SEWER PLAN

RAYMOND L. GOODSON JR., INC., CONSULTING ENGINEERS

CITY OF ADDISON, TEXAS

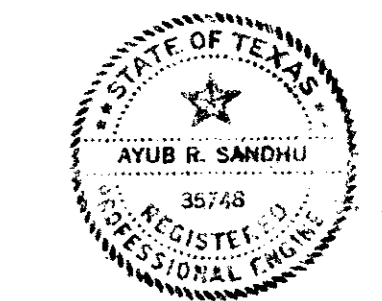
DESIGN	DRAWN	DATE	SCALE	NOTE	FILE NO.
Raymond L. Goodson			1" = 100'	R.L.G.	



NOTE 5
 Contractor shall field locate & notify Engineer of any conflicts between existing & proposed utilities prior to construction.

WARNING!!!
 Maintain Adequate Clearance from D.P.E.L. Electrical Line to Preclude Injury or Damage to Persons or Property.
 Contractor or his Representative should not use boom type equipment on D.P.E.L. R.O.W. in connection with construction shown unless special arrangements have been made with D.P.E.L. Contact 1 Week Prior to Construction.

DETAIL "A"
 Scale: 1/8" = 1'-0"

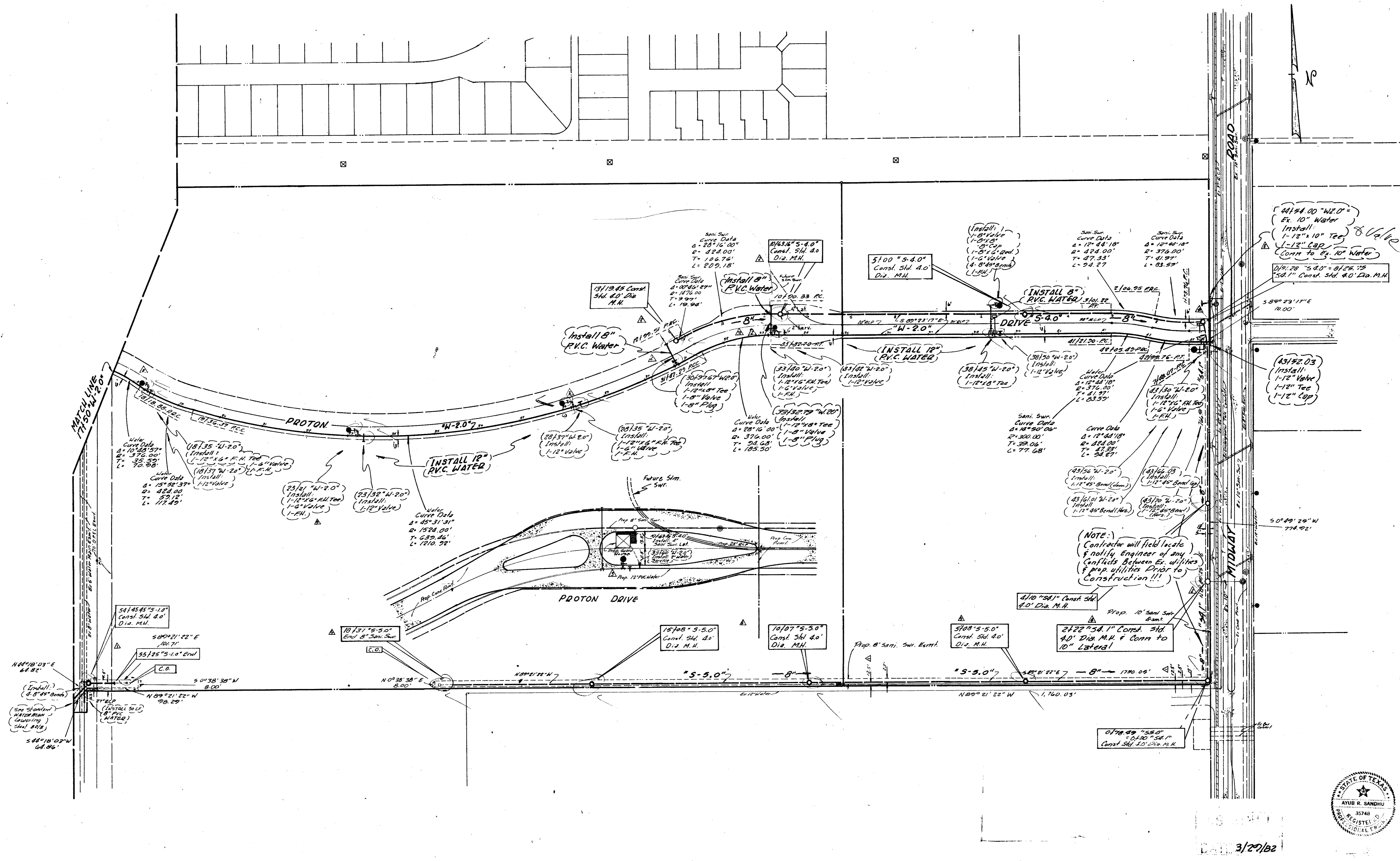


Note: Contractor will field locate & notify Engineer of any conflicts between existing & proposed utilities prior to construction.

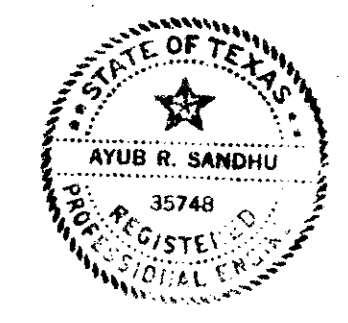
Revised F.H. Line "W-20"
 Revised M.H. Line "S-30"
 Deleted S.S. Line "S-30"
 11/23/81
 Revised As Per As Built's
 3/27/82

9/1/81 Revised alignment and stations and Added N.H. to Sanitary Sewer Line "S-1.0", and Revised Location exist. 16" Water on Marsu Ln. Added 18" 12" P.V.C.
 9/30/81 Revised Locations Sanitary Sewer

WATER & SANITARY SEWER PLAN					
RAYMOND L. GOODSON JR., INC., CONSULTING ENGINEERS					
CITY OF ADDISON, TEXAS					
DESIGN	DRAWN	DATE	SCALE	NOTES	FILE NO.
Raymond L. Goodson			1" = 100'	R.L.G.	



DATE 3/27/02



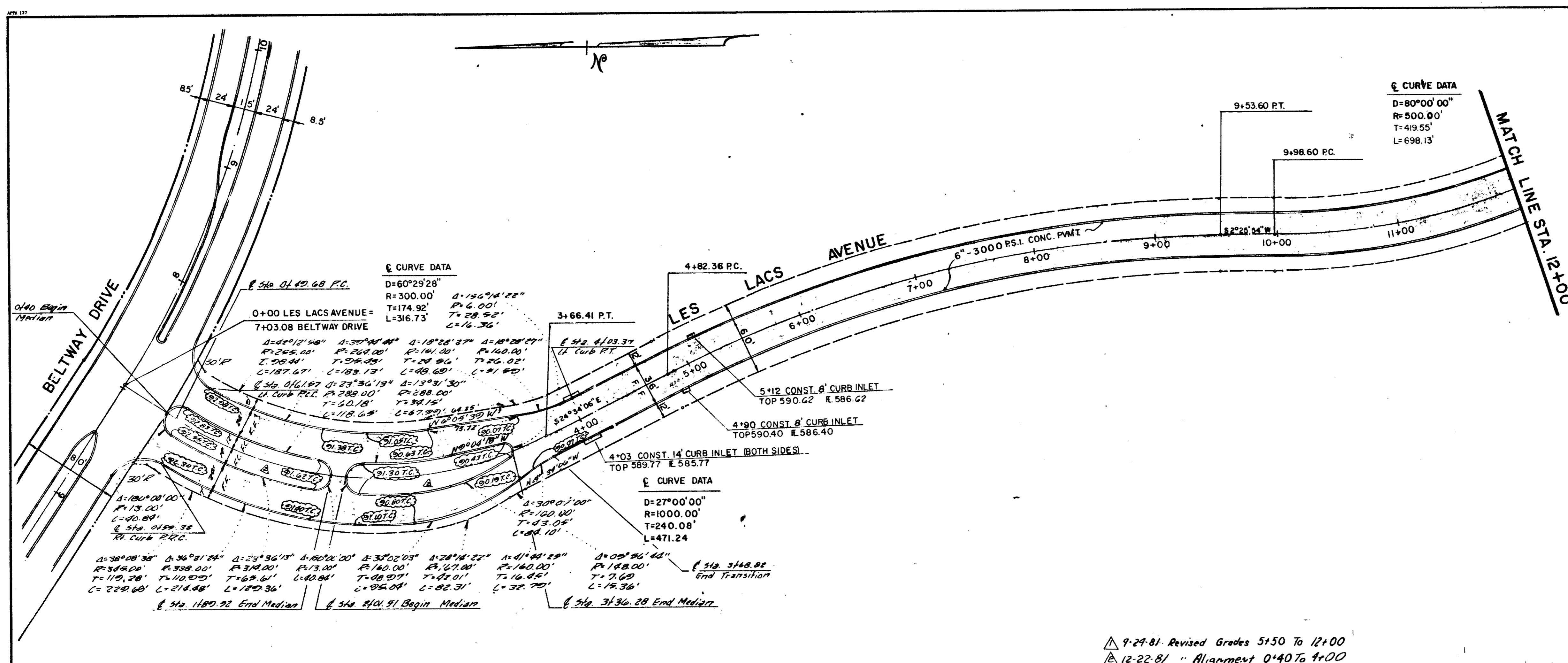
3/9

- △ 4-30-01 Revised Location "S-5.0" "S1.0"
- △ 11-23-01 Revised FH. Sht. 11/25 & 20/35
- Added 8" Service 301572.74 33132.79
- Revised C.O. Sta. 13/10 "54.0"
- Add M.H. 13/12.45
- Added Line "54.1"
- △ 12/10/01 Revised Guard House Utilities
- △ 2/10/02 Revised Changed Water Line "W2.0"
- & Added M.H. Line "54.1"
- △ 3/27/02 Revised As Per As BUILDs

WATER & SANITARY SEWER PLAN					
RAYMOND L. GOODSON JR., INC., CONSULTING ENGINEERS					
CITY OF ADDISON, TEXAS					
DESIGN	DRAWN	DATE	SCALE	NOTES	FILE NO.
Raymond L. Goodson			1"=100'	R.L.G.	

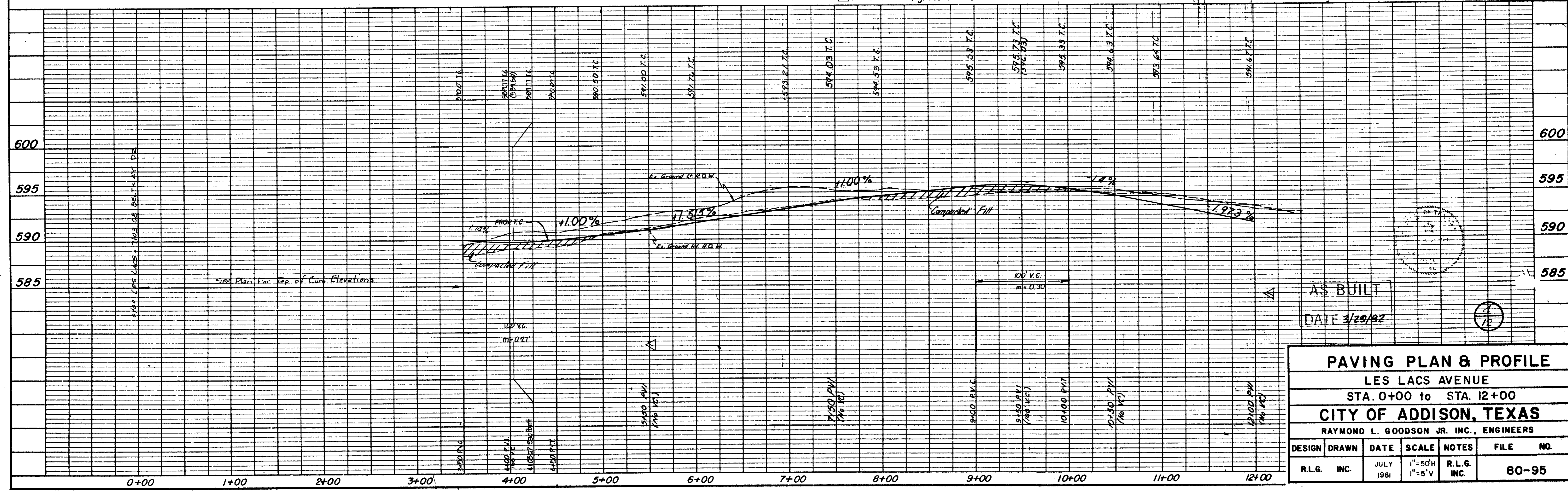
PLAN	DATE
REVISION	
BY	
CHECKED	
DATE	
NO. OF SHEETS	
TOTAL NO. OF SHEETS	

PROFILE	DATE
REVISION	
BY	
CHECKED	
DATE	
NO. OF SHEETS	
TOTAL NO. OF SHEETS	



- GENERAL NOTES**
- All areas to receive fill shall be scarified to a depth of 6 inches and compacted to a density of 95% Standard Proctor Density. All fill shall be placed in horizontal layers not exceeding 8 inches (loose depth) and compacted to a density of 95% Standard Proctor with the moisture content within 4% of the optimum.
 - The Contractor shall be entirely responsible for damage to existing utilities, streets, curbs, sidewalks and other structures of any kind during the execution of this work and shall be liable for damage to public or private property resulting therefrom.
 - All materials and workmanship shall conform to the City of Addison Standards and Specifications and to the contract specifications and documents.
 - The location of all utilities are taken from existing public records. The exact location must be determined by the Contractor. It is the duty of the Contractor to ascertain whether any other facilities (additional), other than those on the plans may be present.
- BENCH MARKS**
- Railroad Spike in 12" Willow 250+ feet East Centerline Old Marsh Lane & 75+ feet North Centerline Belt Line. Elev. 576.32
 - "□" Top of Curb at the Center of a 10' inlet and 75+ feet West of Centerline Commercial at the North Side of Belt Line Road. Elev. 580.83
 - "□" Top of Concrete Footing at Southeast Corner Tower #12M-3M-T287. Elev. 597.83
 - "□" Top of Concrete Footing at Northwest Corner Tower #12M-3M-T288. Elev. 605.20
 - "□" Top of Concrete Footing at Northwest Corner Tower #12M-3M-T290 at angle point in Tower line. Elev. 613.16
 - "□" Top of Concrete Footing at Southwest Corner Tower #12M-3M-T291. Elev. 619.46
 - "□" Out at top of Concrete Footing at Tower #12M-2M-T294. Elev. 607.46

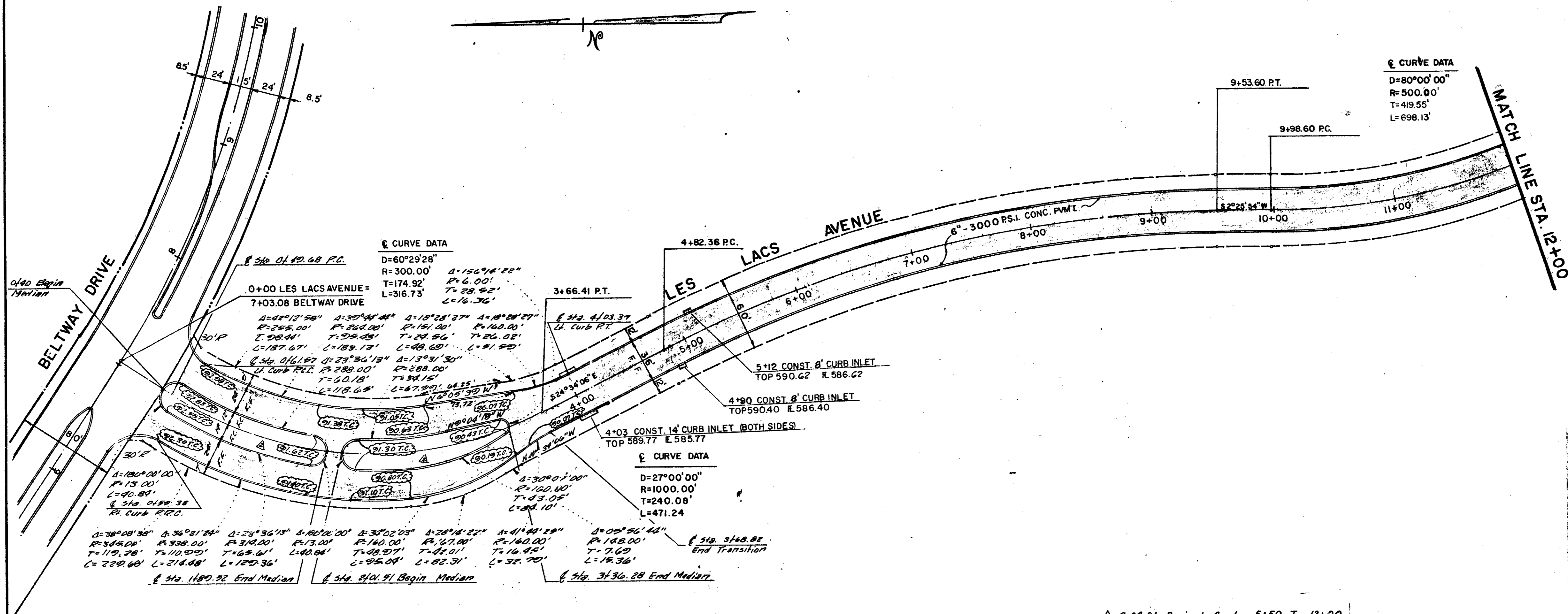
△ 9-29-81 Revised Grades 5+50 To 12+00
 △ 12-22-81 " Alignment 0+40 To 4+00



PAVING PLAN & PROFILE					
LES LACS AVENUE					
STA. 0+00 to STA. 12+00					
CITY OF ADDISON, TEXAS					
RAYMOND L. GOODSON JR. INC., ENGINEERS					
DESIGN	DRAWN	DATE	SCALE	NOTES	FILE NO.
R.L.G. INC.		JULY 1981	1"=50'H 1"=5'V	R.L.G. INC.	80-95

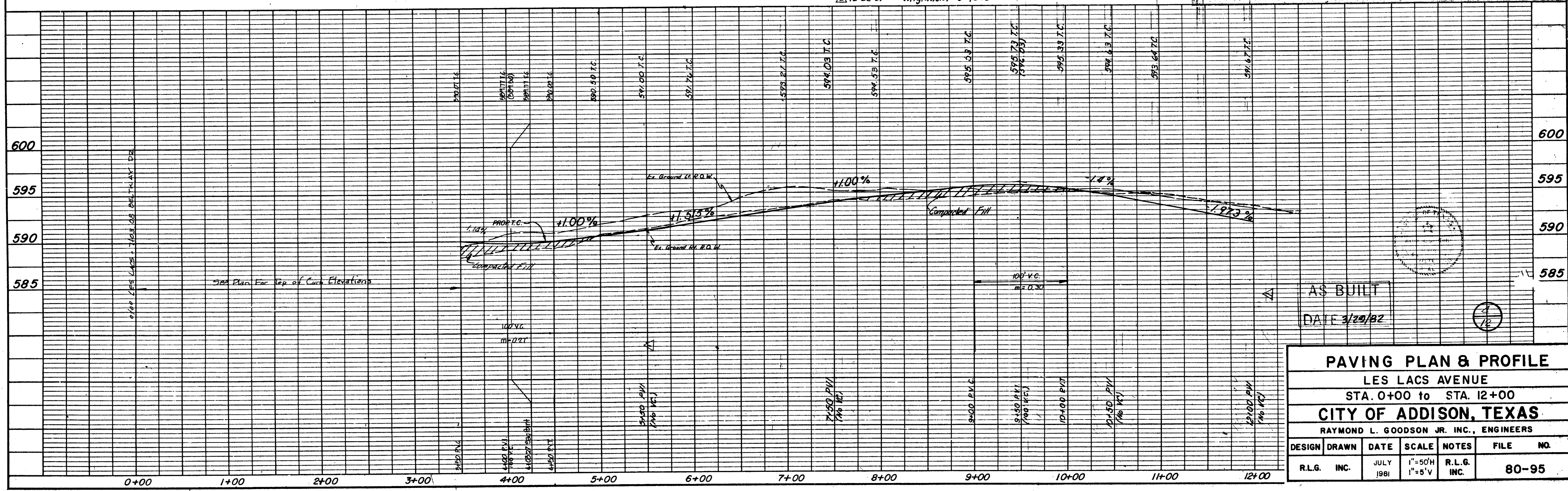
DATE	
BY	
REVISIONS	
APPROVED	
NOTE BOOK	
NO.	

DATE	
BY	
REVISIONS	
APPROVED	
NOTE BOOK	
NO.	



- GENERAL NOTES**
- All areas to receive fill shall be scarified to a depth of 6 inches and compacted to a density of 95% Standard Proctor Density. All fill shall be placed in horizontal layers not exceeding 8 inches (loose depth) and compacted to a density of 95% Standard Proctor with the moisture content within 4% of the optimum.
 - The Contractor shall be entirely responsible for damage to existing utilities, streets, curbs, sidewalks and other structures of any kind during the execution of this work and shall be liable for damage to public or private property resulting therefrom.
 - All materials and workmanship shall conform to the City of Addison Standards and Specifications and to the contract specifications and documents.
 - The location of all utilities are taken from existing public records. The exact location must be determined by the Contractor. It is the duty of the Contractor to ascertain whether any other facilities (additional), other than those on the plans may be present.
- BENCH MARKS**
- Railroad Spike in 12" Willow 250+ feet East Centerline Old Marsh Lane & 75+ feet North Centerline Belt Line. Elev. 576.32
 - "□" Top of Curb at the Center of a 10' Inlet and 75+ feet West of Centerline Commercial at the North Side of Belt Line Road. Elev. 580.83
 - "□" Top of Concrete Footing at Southeast Corner Tower #12N-3W-T287. Elev. 597.83
 - "□" Top of Concrete Footing at Northwest Corner Tower #12N-3W-T288. Elev. 603.20
 - "□" Top of Concrete Footing at Northwest Corner Tower #12N-3W-T290 at angle point in Tower line. Elev. 613.16
 - "□" Top of Concrete Footing at Southwest Corner Tower #12N-3W-T291. Elev. 619.44
 - "□" Cut at top of Concrete Footing at Tower #12N-3W-T294. Elev. 607.44

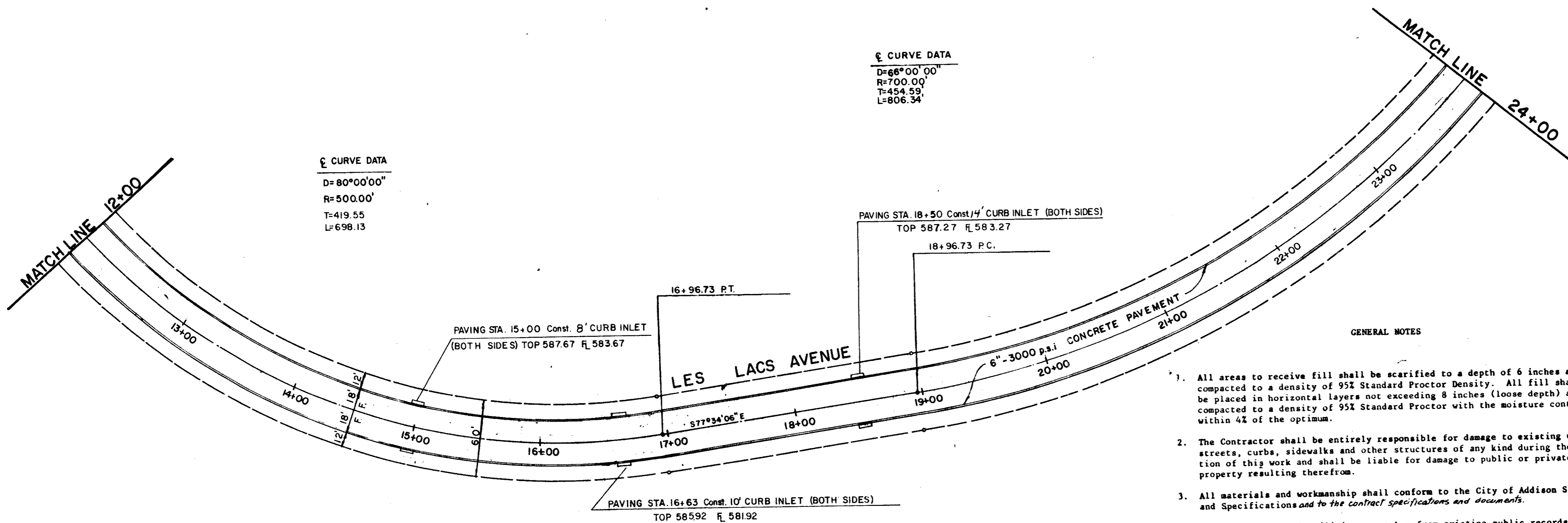
▲ 9-29-81 Revised Grades 5+50 To 12+00
 ▲ 12-22-81 " Alignment 0+40 To 4+00



PAVING PLAN & PROFILE						
LES LACS AVENUE						
STA. 0+00 to STA. 12+00						
CITY OF ADDISON, TEXAS						
RAYMOND L. GOODSON JR. INC., ENGINEERS						
DESIGN	DRAWN	DATE	SCALE	NOTES	FILE	NO.
R.L.G. INC.		JULY 1981	1"=50'H 1"=5'V	R.L.G. INC.	80-95	

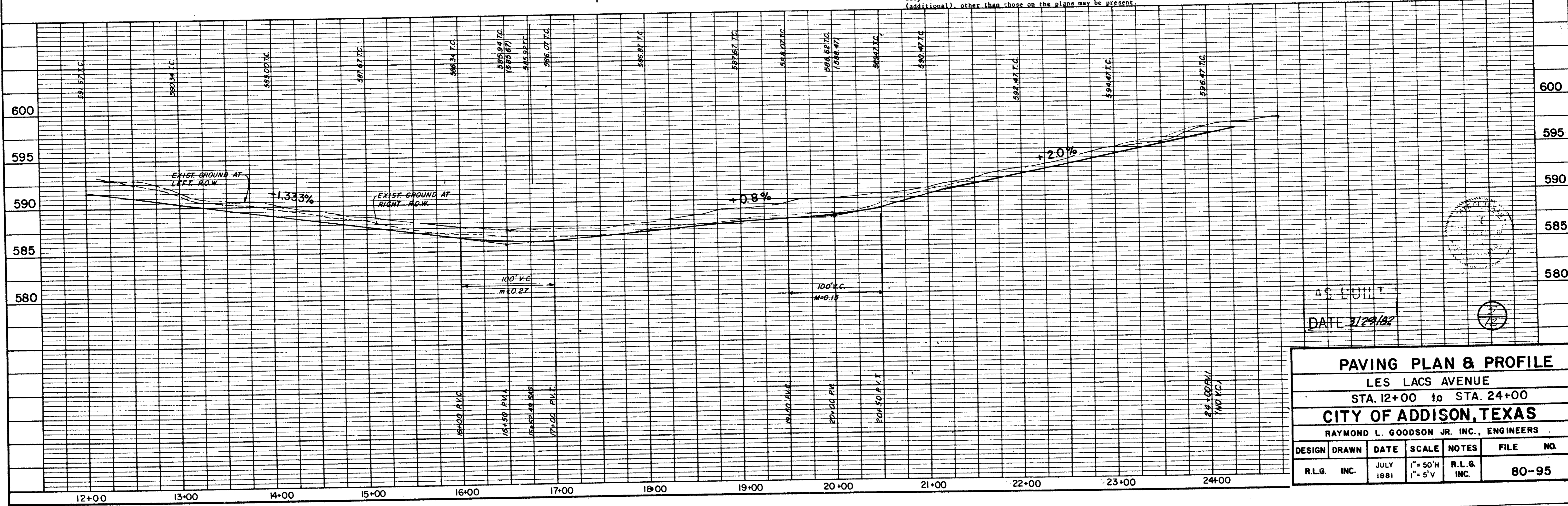
DATE	
BY	
REVISION	
NO.	
PLAN	
NOTE BOOK	
NO.	

DATE	
BY	
REVISION	
NO.	
PROFILE	
NOTE BOOK	
NO.	



- GENERAL NOTES**
- All areas to receive fill shall be scarified to a depth of 6 inches and compacted to a density of 95% Standard Proctor Density. All fill shall be placed in horizontal layers not exceeding 8 inches (loose depth) and compacted to a density of 95% Standard Proctor with the moisture content within 4% of the optimum.
 - The Contractor shall be entirely responsible for damage to existing utilities, streets, curbs, sidewalks and other structures of any kind during the execution of this work and shall be liable for damage to public or private property resulting therefrom.
 - All materials and workmanship shall conform to the City of Addison Standards and Specifications and to the contract specifications and documents.
 - The location of all utilities are taken from existing public records. The exact location must be determined by the Contractor. It is the duty of the Contractor to ascertain whether any other facilities (additional) other than those on the plans may be present.

- BENCH MARKS**
- Railroad Spike in 12" Willow 250+ feet East Centerline Old Marsh Lane & 75+ feet North Centerline Belt Line. Elev. 576.32
 - "□" Top of Curb at the Center of a 10' inlet and 75+ feet West of Centerline Commercial at the North Side of Belt Line Road. Elev. 580.83
 - "□" Top of Concrete Footing at Southeast Corner Tower #13N-3W-T287. Elev. 597.83
 - "□" Top of Concrete Footing at Northwest Corner Tower #12N-3W-T288. Elev. 605.20
 - "□" Top of Concrete Footing at Northwest Corner Tower #12N-3W-T290 at angle point in Tower line. Elev. 613.16
 - "□" Top of Concrete Footing at Southwest Corner Tower #12N-3W-T291. Elev. 619.46
 - "□" Cut at top of Concrete Footing at Tower #12N-2W-T294. Elev. 607.46

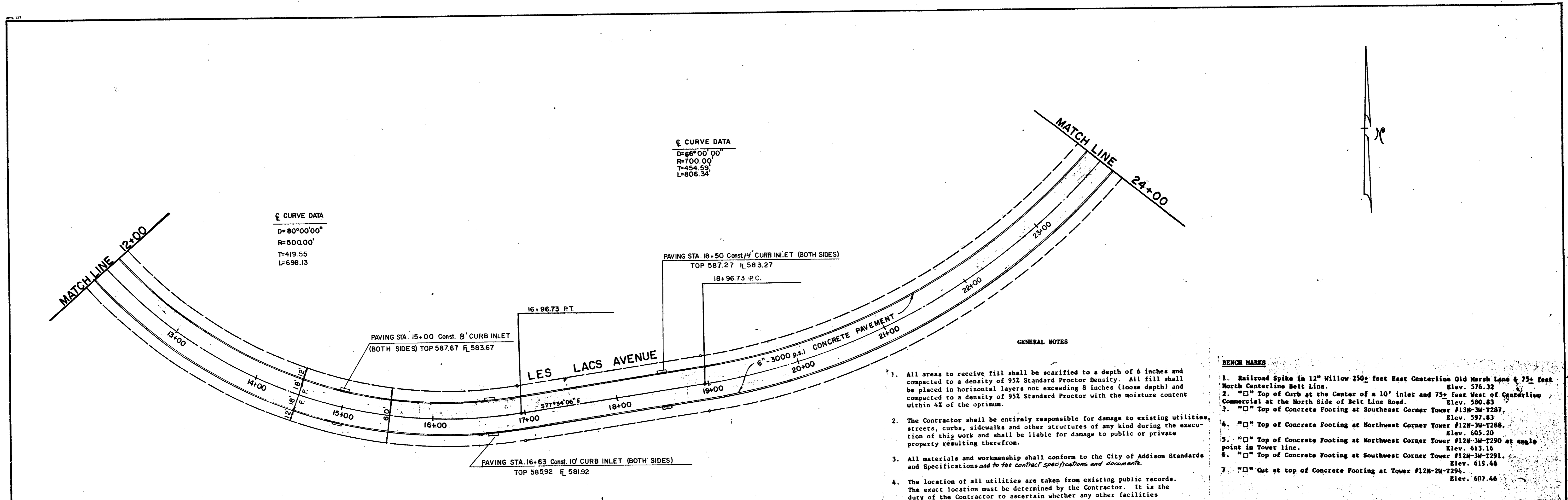


DATE 7/29/82

PAVING PLAN & PROFILE						
LES LACS AVENUE						
STA. 12+00 to STA. 24+00						
CITY OF ADDISON, TEXAS						
RAYMOND L. GOODSON JR. INC., ENGINEERS						
DESIGN	DRAWN	DATE	SCALE	NOTES	FILE	NO.
R.L.G.	INC.	JULY 1981	1"=50'H 1"=5'V	R.L.G. INC.		80-95

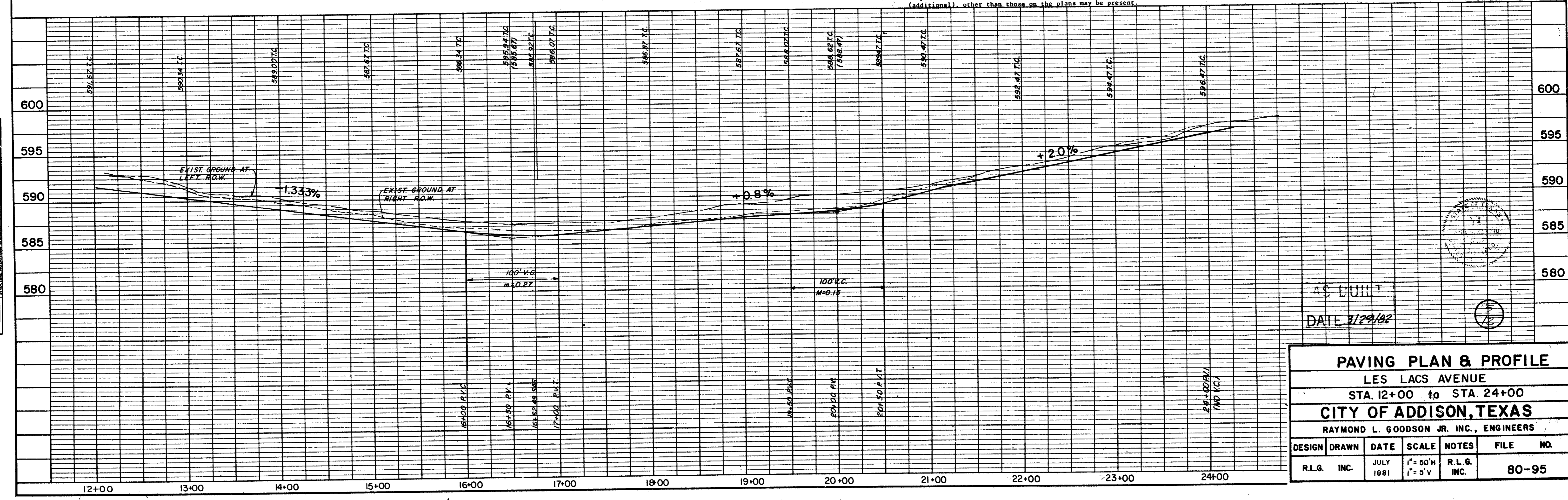
DATE	
BY	
REVISIONS	
NO.	
DATE	
BY	
REVISIONS	
NO.	
DATE	
BY	
REVISIONS	
NO.	

DATE	
BY	
REVISIONS	
NO.	
DATE	
BY	
REVISIONS	
NO.	
DATE	
BY	
REVISIONS	
NO.	



- GENERAL NOTES**
- All areas to receive fill shall be scarified to a depth of 6 inches and compacted to a density of 95% Standard Proctor Density. All fill shall be placed in horizontal layers not exceeding 8 inches (loose depth) and compacted to a density of 95% Standard Proctor with the moisture content within 4% of the optimum.
 - The Contractor shall be entirely responsible for damage to existing utilities, streets, curbs, sidewalks and other structures of any kind during the execution of this work and shall be liable for damage to public or private property resulting therefrom.
 - All materials and workmanship shall conform to the City of Addison Standards and Specifications and to the contract specifications and documents.
 - The location of all utilities are taken from existing public records. The exact location must be determined by the Contractor. It is the duty of the Contractor to ascertain whether any other facilities (additional), other than those on the plans may be present.

- BENCH MARKS**
- Railroad Spike in 12" Willow 250+ feet East Centerline Old Marsh Lane & 75+ feet North Centerline Belt Line. Elev. 576.32
 - "□" Top of Curb at the Center of a 10' inlet and 75+ feet West of Centerline Commercial at the North Side of Belt Line Road. Elev. 580.83
 - "□" Top of Concrete Footing at Southeast Corner Tower #13N-3W-T287. Elev. 597.83
 - "□" Top of Concrete Footing at Northwest Corner Tower #12N-3W-T288. Elev. 605.20
 - "□" Top of Concrete Footing at Northwest Corner Tower #12N-3W-T290 at angle point in Tower line. Elev. 613.16
 - "□" Top of Concrete Footing at Southwest Corner Tower #12N-3W-T291. Elev. 619.46
 - "□" Out at top of Concrete Footing at Tower #12N-2W-T294. Elev. 607.46



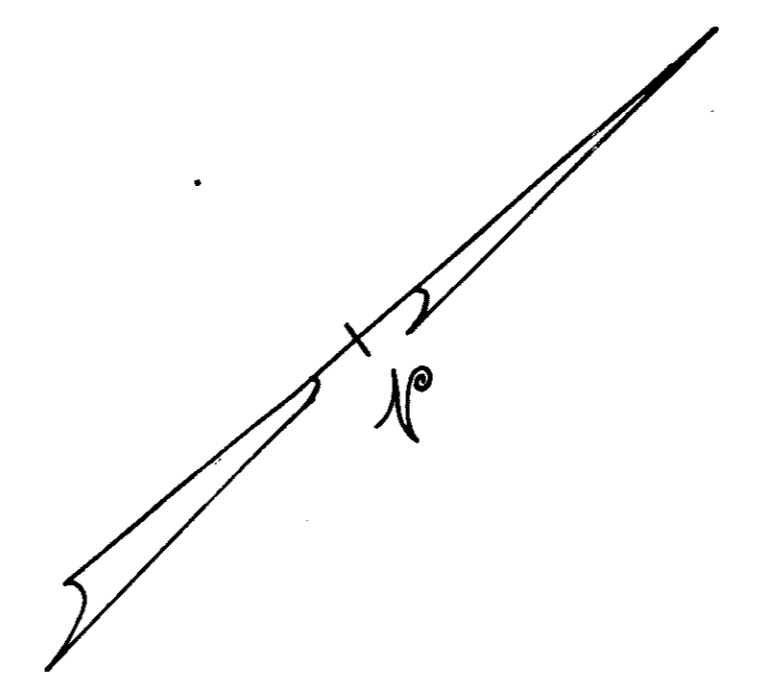
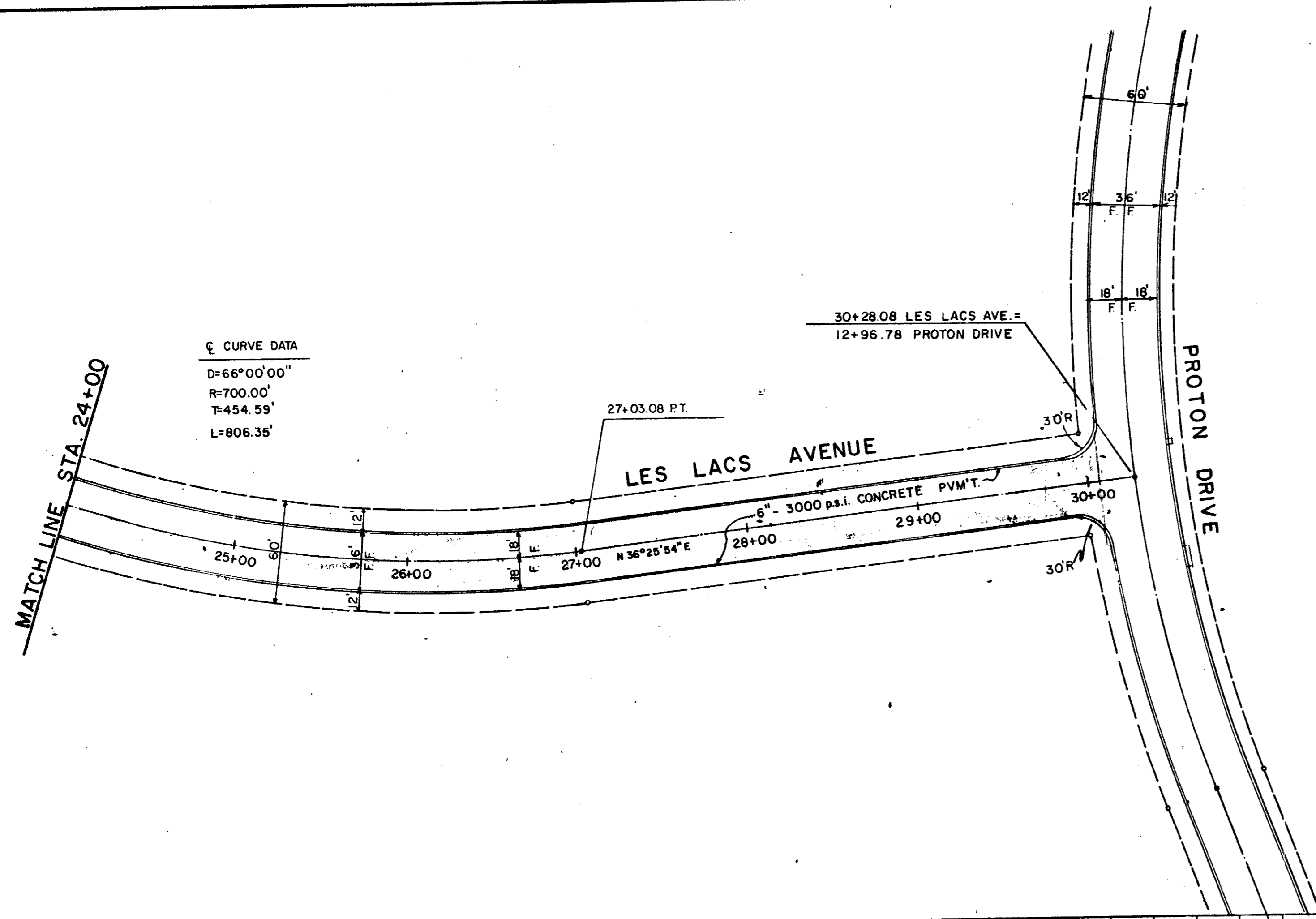
AS BUILT
DATE 7/29/82

PAVING PLAN & PROFILE						
LES LACS AVENUE						
STA. 12+00 to STA. 24+00						
CITY OF ADDISON, TEXAS						
RAYMOND L. GOODSON JR. INC., ENGINEERS						
DESIGN	DRAWN	DATE	SCALE	NOTES	FILE	NO.
R.L.G. INC.		JULY 1981	1" = 50'H 1" = 5'V	R.L.G. INC.	80-95	

DATE	
BY	
REVISION	
NO.	
PLAN	
NOTE BOOK	
No.	

DATE	
BY	
REVISION	
NO.	
PROFILE	
NOTE BOOK	
No.	

CURVE DATA
 D=66°00'00"
 R=700.00'
 T=454.59'
 L=806.35'
 27+03.08 P.T.

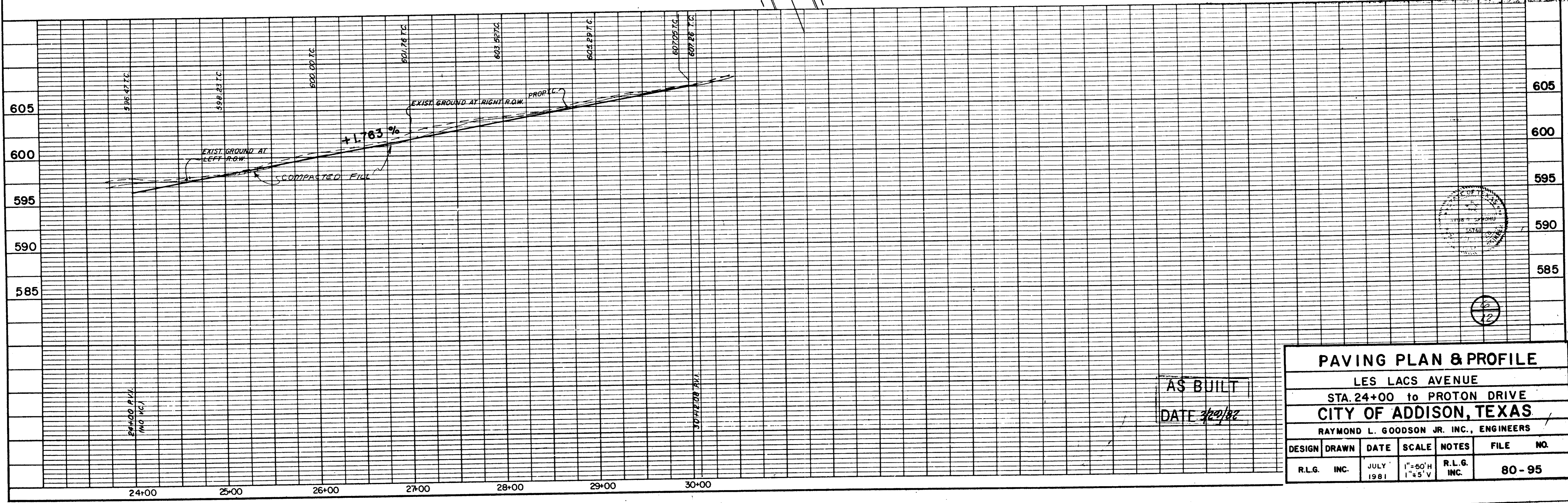


GENERAL NOTES

- All areas to receive fill shall be scarified to a depth of 6 inches and compacted to a density of 95% Standard Proctor Density. All fill shall be placed in horizontal layers not exceeding 8 inches (loose depth) and compacted to a density of 95% Standard Proctor with the moisture content within 4% of the optimum.
- The Contractor shall be entirely responsible for damage to existing utilities, streets, curbs, sidewalks and other structures of any kind during the execution of this work and shall be liable for damage to public or private property resulting therefrom.
- All materials and workmanship shall conform to the City of Addison Standards and Specifications, and to contract specifications and documents.
- The location of all utilities are taken from existing public records. The exact location must be determined by the Contractor. It is the duty of the Contractor to ascertain whether any other facilities (additional), other than those on the plans may be present.

BENCH MARKS

- Railroad Spike in 12" Willow 250 feet East Centerline Old Marsh Lane & 75 feet North Centerline Belt Line. Elev. 576.32
- "□" Top of Curb at the Center of a 10' inlet and 75 feet West of Centerline Commercial at the North Side of Belt Line Road. Elev. 580.83
- "□" Top of Concrete Footing at Southeast Corner Tower #12N-3W-1287. Elev. 597.83
- "□" Top of Concrete Footing at Northwest Corner Tower #12N-3W-1288. Elev. 605.20
- "□" Top of Concrete Footing at Northwest Corner Tower #12N-3W-1290 at angle point in tower line. Elev. 613.16
- "□" Top of Concrete Footing at Southwest Corner Tower #12N-3W-1291. Elev. 619.46
- "□" Cut at top of Concrete Footing at Tower #12N-2W-1294. Elev. 607.64

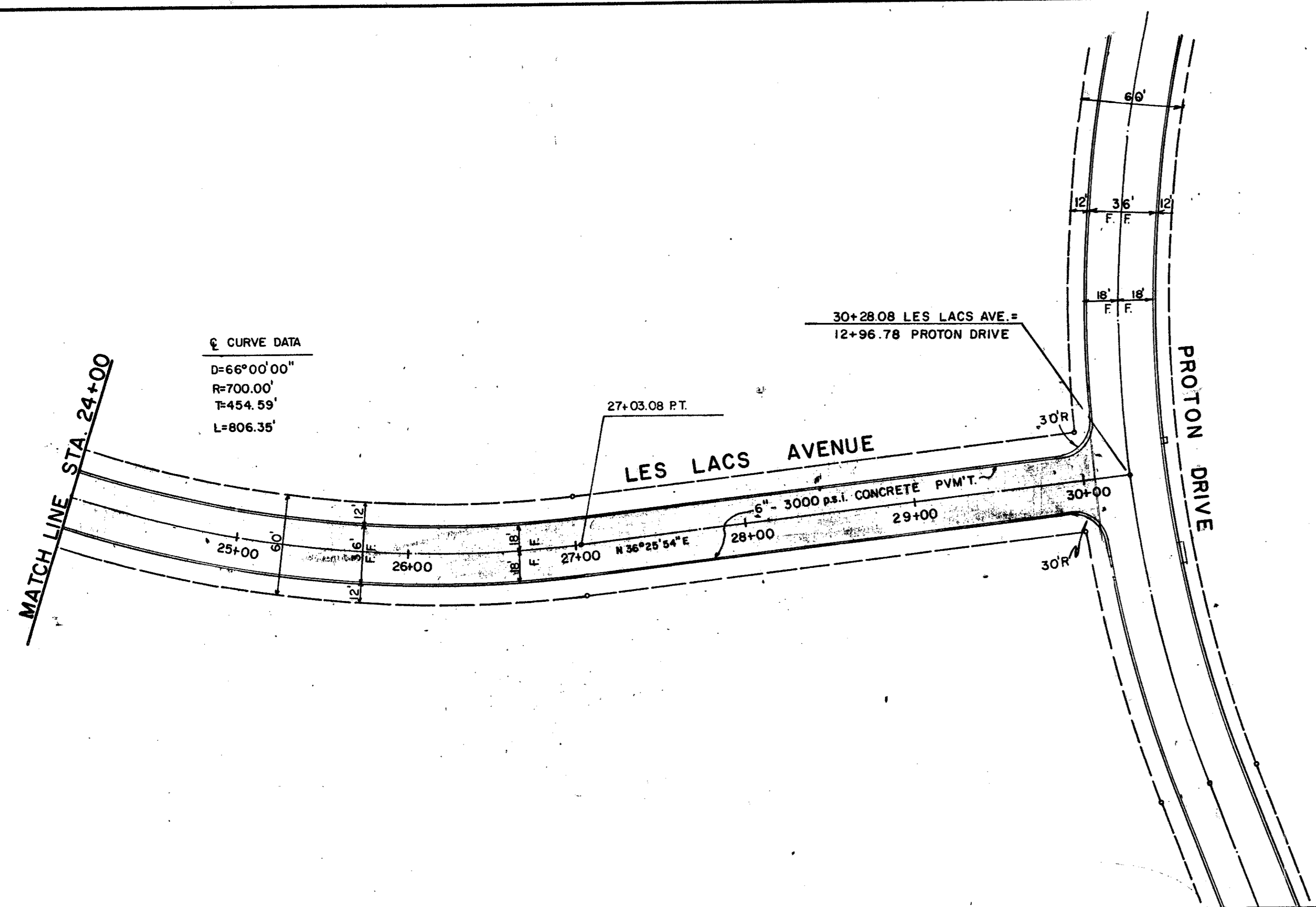


AS BUILT
 DATE 7/28/81

PAVING PLAN & PROFILE						
LES LACS AVENUE						
STA. 24+00 to PROTON DRIVE						
CITY OF ADDISON, TEXAS						
RAYMOND L. GOODSON JR. INC., ENGINEERS						
DESIGN	DRAWN	DATE	SCALE	NOTES	FILE	NO.
R.L.G.	INC.	JULY 1981	1"=50'H 1"=5' V	R.L.G. INC.		80-95

DATE	
BY	
REVISIONS	
NO.	
DATE	
BY	
REVISIONS	
NO.	
DATE	
BY	
REVISIONS	
NO.	
DATE	
BY	
REVISIONS	
NO.	

DATE	
BY	
REVISIONS	
NO.	
DATE	
BY	
REVISIONS	
NO.	
DATE	
BY	
REVISIONS	
NO.	

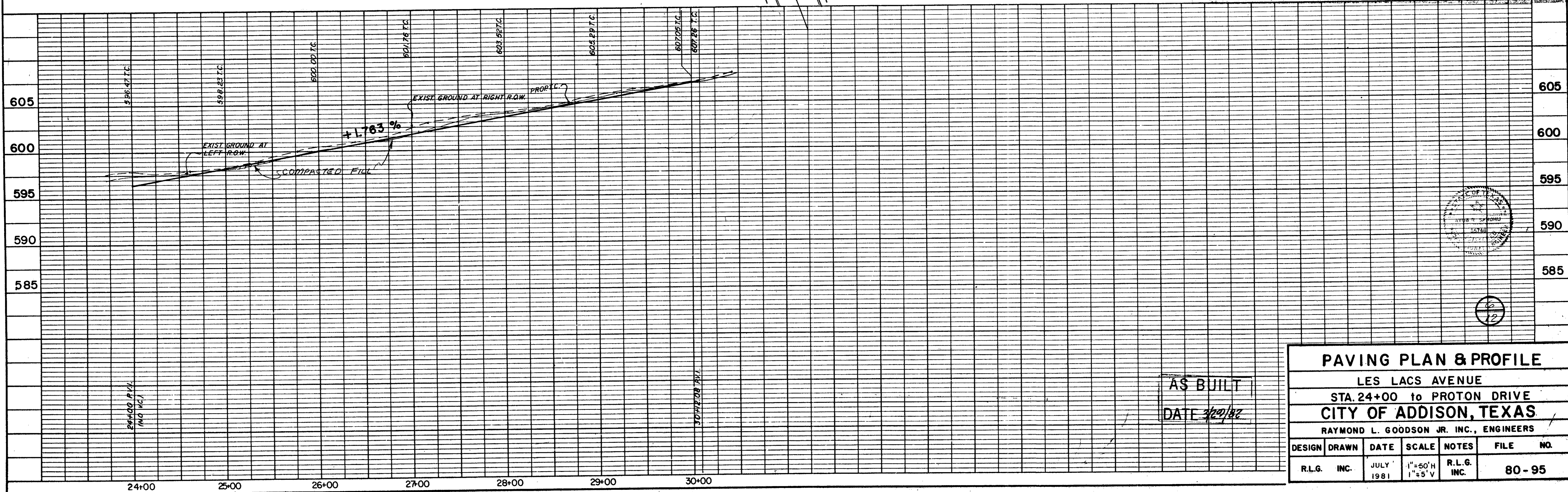


GENERAL NOTES

- All areas to receive fill shall be scarified to a depth of 6 inches and compacted to a density of 95% Standard Proctor Density. All fill shall be placed in horizontal layers not exceeding 8 inches (loose depth) and compacted to a density of 95% Standard Proctor with the moisture content within 4% of the optimum.
- The Contractor shall be entirely responsible for damage to existing utilities, streets, curbs, sidewalks and other structures of any kind during the execution of this work and shall be liable for damage to public or private property resulting therefrom.
- All materials and workmanship shall conform to the City of Addison Standards and Specifications, and to Contract specifications and documents.
- The location of all utilities are taken from existing public records. The exact location must be determined by the Contractor. It is the duty of the Contractor to ascertain whether any other facilities (additional), other than those on the plans may be present.

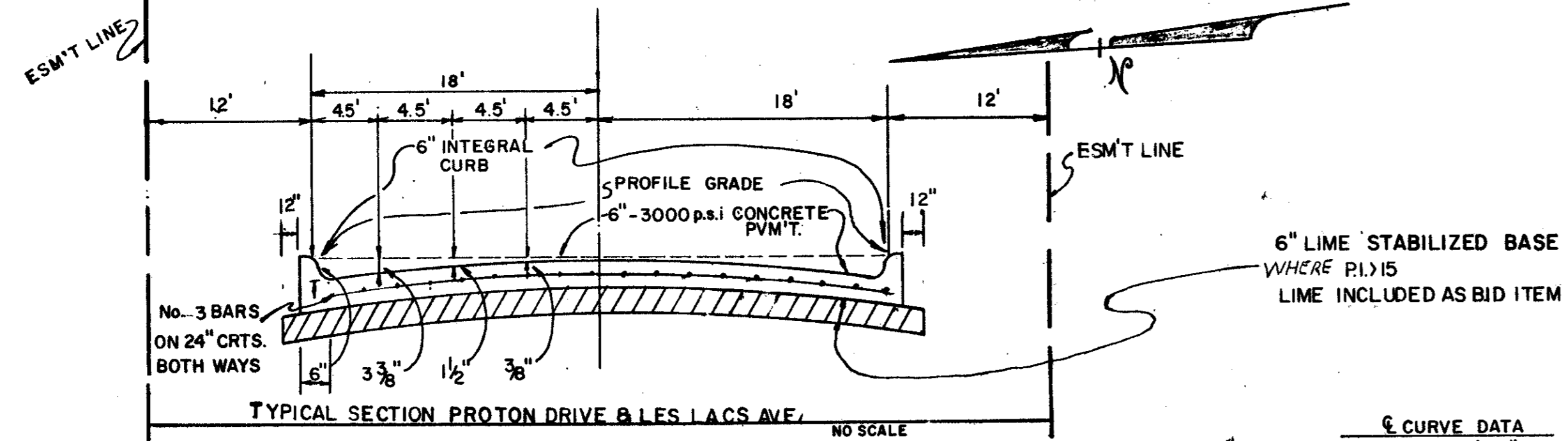
BENCH MARKS

- Railroad Spike in 12" Willow 250+ feet East Centerline Old Marsh Lane & 75+ feet North Centerline Belt Line. Elev. 576.32
- "□" Top of Curb at the Center of a 10' Inlet and 75+ feet West of Centerline Commercial at the North Side of Belt Line Road. Elev. 580.83
- "□" Top of Concrete Footing at Northeast Corner Tower #13N-3U-T287. Elev. 597.83
- "□" Top of Concrete Footing at Northwest Corner Tower #12N-3U-T288. Elev. 605.20
- "□" Top of Concrete Footing at Northwest Corner Tower #12N-3U-T290 at angle point in tower line. Elev. 613.16
- "□" Top of Concrete Footing at Southwest Corner Tower #12N-3U-T291. Elev. 619.46
- "□" Out at top of Concrete Footing at Tower #12N-2U-T294. Elev. 607.46



AS BUILT
DATE 4/20/82

PAVING PLAN & PROFILE						
LES LACS AVENUE						
STA. 24+00 to PROTON DRIVE						
CITY OF ADDISON, TEXAS						
RAYMOND L. GOODSON JR. INC., ENGINEERS						
DESIGN	DRAWN	DATE	SCALE	NOTES	FILE	NO.
R.L.G. INC.		JULY 1981	1"=50'H 1"=5'V	R.L.G. INC.		80-95



NO. 3 BARS ON 24" CRTS. BOTH WAYS

ESMT LINE

ESMT LINE

6" LIME STABILIZED BASE WHERE P.I.'S LIME INCLUDED AS BID ITEM

10' 26.71' Proton Dr. @ 88 L.F. Curb Leave Out

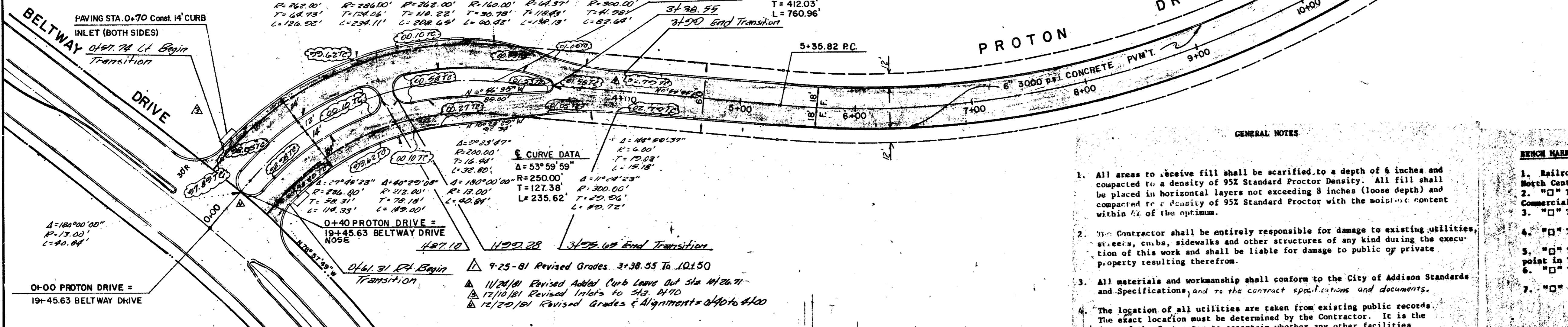
CURVE DATA	
$\Delta = 54^{\circ}30'00''$	$R = 800.00'$
$T = 412.03'$	$L = 760.96'$

PAVING STA. 0+70 Const. 14' CURB INLET (BOTH SIDES)

0+00 PROTON DRIVE = 19+45.63 BELTWAY DRIVE

CURVE DATA	
$\Delta = 27^{\circ}45'23''$	$R = 246.00'$
$T = 128.73'$	$L = 228.22'$

CURVE DATA	
$\Delta = 53^{\circ}59'59''$	$R = 250.00'$
$T = 127.38'$	$L = 235.62'$



- GENERAL NOTES
- All areas to receive fill shall be scarified to a depth of 6 inches and compacted to a density of 95% Standard Proctor Density. All fill shall be placed in horizontal layers not exceeding 8 inches (loose depth) and compacted to a density of 95% Standard Proctor with the moisture content within 1% of the optimum.
 - The Contractor shall be entirely responsible for damage to existing utilities, streets, curbs, sidewalks and other structures of any kind during the execution of this work and shall be liable for damage to public or private property resulting therefrom.
 - All materials and workmanship shall conform to the City of Addison Standards and Specifications, and to the contract specifications and documents.
 - The location of all utilities are taken from existing public records. The exact location must be determined by the Contractor. It is the duty of the Contractor to ascertain whether any other facilities (additional), other than those on the plans may be present.

- BENCH MARKS
- Railroad Spikes in 12" Willow 250+ feet East Centerline Old March Lane @ 752 feet North Centerline Belt Line. Elev. 576.32
 - "□" Top of Curb at the Center of a 10' inlet and 75+ feet West of Centerline Commercial at the North Side of Belt Line Road. Elev. 580.83
 - "□" Top of Concrete Footing at Southeast Corner Tower #13N-3W-T287. Elev. 597.83
 - "□" Top of Concrete Footing at Northwest Corner Tower #12N-3W-T288. Elev. 605.20
 - "□" Top of Concrete Footing at Northwest Corner Tower #12N-3W-T290 at angle point in Tower line. Elev. 613.16
 - "□" Top of Concrete Footing at Southwest Corner Tower #12N-3W-T291. Elev. 619.46
 - "□" Cut at top of Concrete Footing at Tower #12N-2W-T294. Elev. 607.46

PLAN

DATE

BY

REVISION

NO.

NO. OF WAY CHECKED

ALIGNMENT CHECKED

STRUCTURE NOTATION CHECKED

PROFILE

DATE

BY

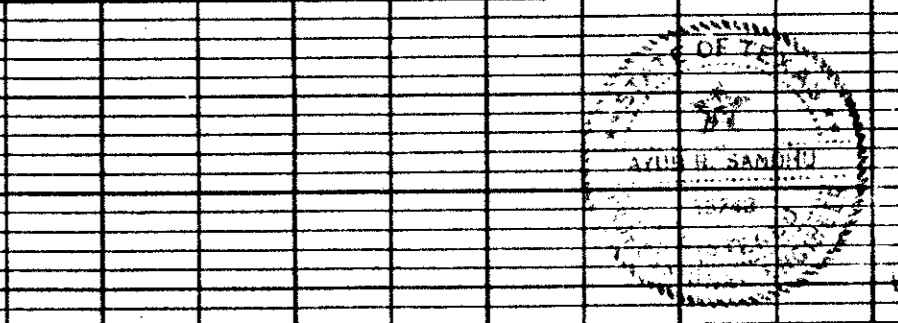
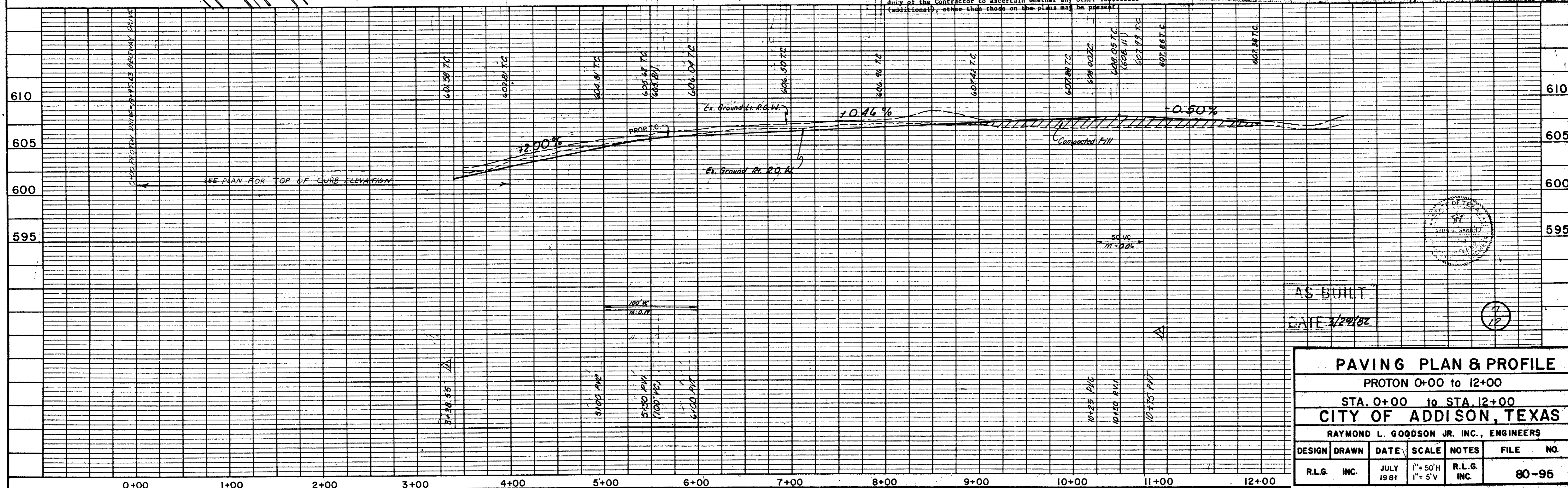
REVISION

NO.

NO. OF WAY CHECKED

ALIGNMENT CHECKED

STRUCTURE NOTATION CHECKED



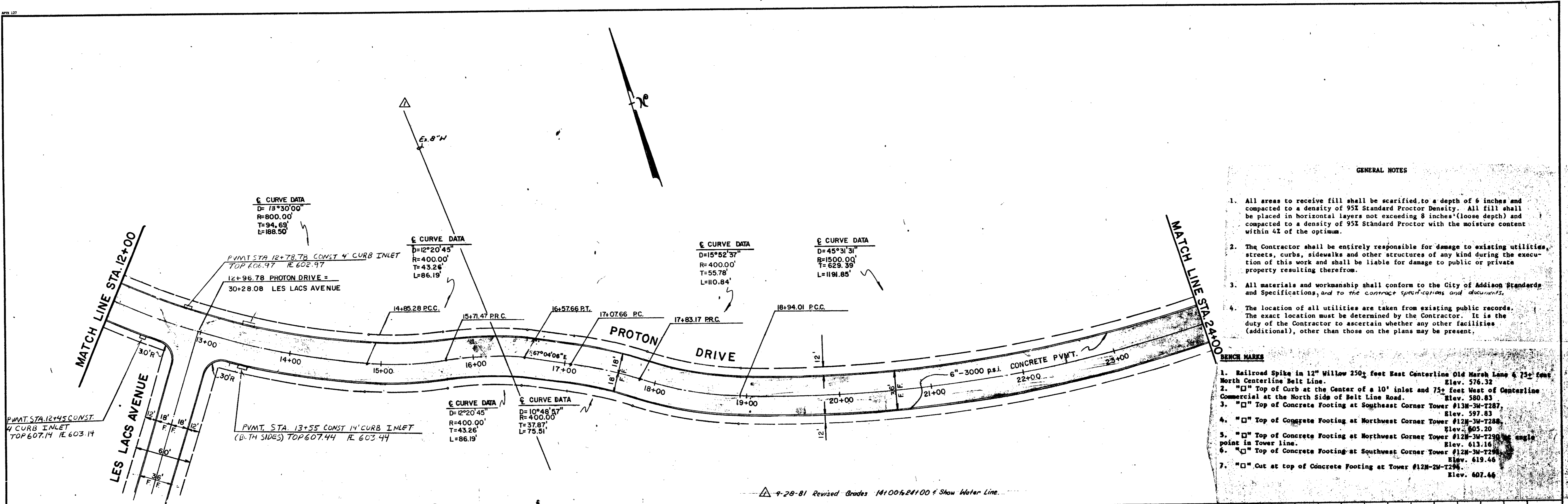
AS BUILT

DATE 3/22/82

PAVING PLAN & PROFILE						
PROTON 0+00 TO 12+00						
STA. 0+00 TO STA. 12+00						
CITY OF ADDISON, TEXAS						
RAYMOND L. GOODSON JR., INC., ENGINEERS						
DESIGN	DRAWN	DATE	SCALE	NOTES	FILE NO.	
R.L.G.	INC.	JULY 1981	1"=50'H 1"=5'V	R.L.G. INC.	80-95	

DATE	
BY	
REVISION	
NO.	
PLAN	
NOTE BOOK	
NO.	

DATE	
BY	
REVISION	
NO.	
PROFILE	
NOTE BOOK	
NO.	

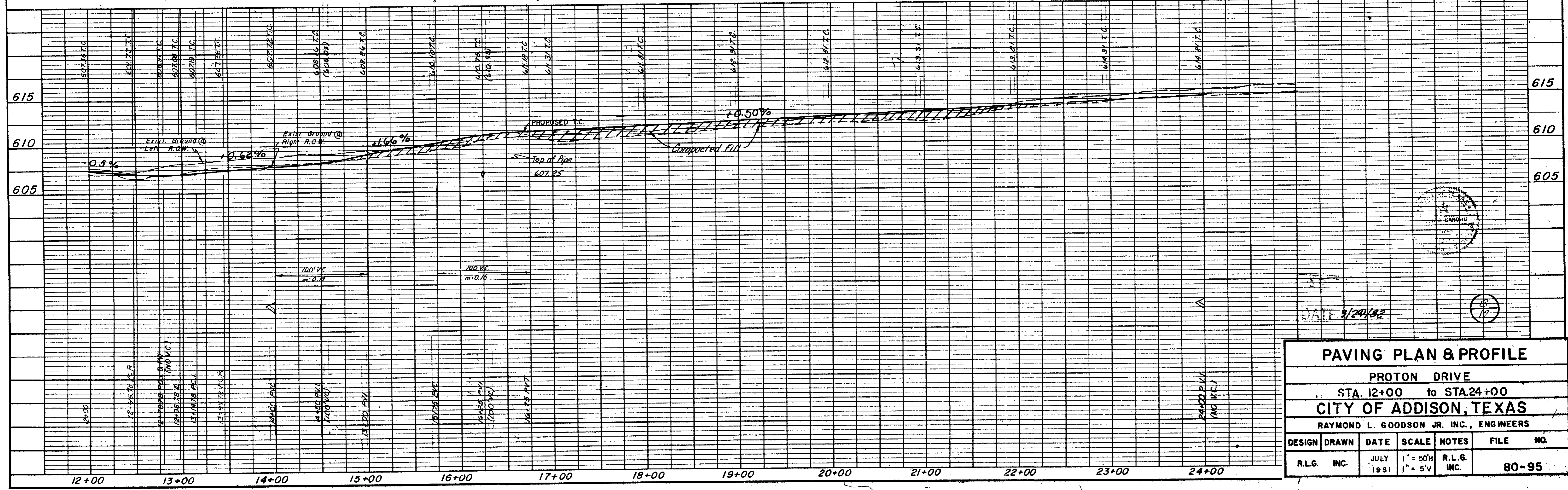


GENERAL NOTES

- All areas to receive fill shall be scarified to a depth of 6 inches and compacted to a density of 95% Standard Proctor Density. All fill shall be placed in horizontal layers not exceeding 8 inches (loose depth) and compacted to a density of 95% Standard Proctor with the moisture content within 4% of the optimum.
- The Contractor shall be entirely responsible for damage to existing utilities, streets, curbs, sidewalks and other structures of any kind during the execution of this work and shall be liable for damage to public or private property resulting therefrom.
- All materials and workmanship shall conform to the City of Addison Standards and Specifications, and to the contract specifications and documents.
- The location of all utilities are taken from existing public records. The exact location must be determined by the Contractor. It is the duty of the Contractor to ascertain whether any other facilities (additional), other than those on the plans may be present.

BENCH MARKS

- Railroad Spike in 12" Willow 250 feet East Centerline Old Marsh Lane & 75 feet North Centerline Belt Line. Elev. 576.32
- "□" Top of Curb at the Center of a 10' inlet and 75 feet West of Centerline Commercial at the North Side of Belt Line Road. Elev. 580.83
- "□" Top of Concrete Footing at Southeast Corner Tower #12M-3W-T287. Elev. 597.83
- "□" Top of Concrete Footing at Northwest Corner Tower #12M-3W-T288. Elev. 605.20
- "□" Top of Concrete Footing at Northwest Corner Tower #12M-3W-T290 at angle point in Tower line. Elev. 613.16
- "□" Top of Concrete Footing at Southwest Corner Tower #12M-3W-T291. Elev. 619.46
- "□" Cut at top of Concrete Footing at Tower #12M-3W-T294. Elev. 607.46



PAVING PLAN & PROFILE						
PROTON DRIVE						
STA. 12+00 to STA. 24+00						
CITY OF ADDISON, TEXAS						
RAYMOND L. GOODSON JR. INC., ENGINEERS						
DESIGN	DRAWN	DATE	SCALE	NOTES	FILE	NO.
R.L.G. INC.		JULY 1981	1" = 50H 1" = 5'V	R.L.G. INC.		80-95

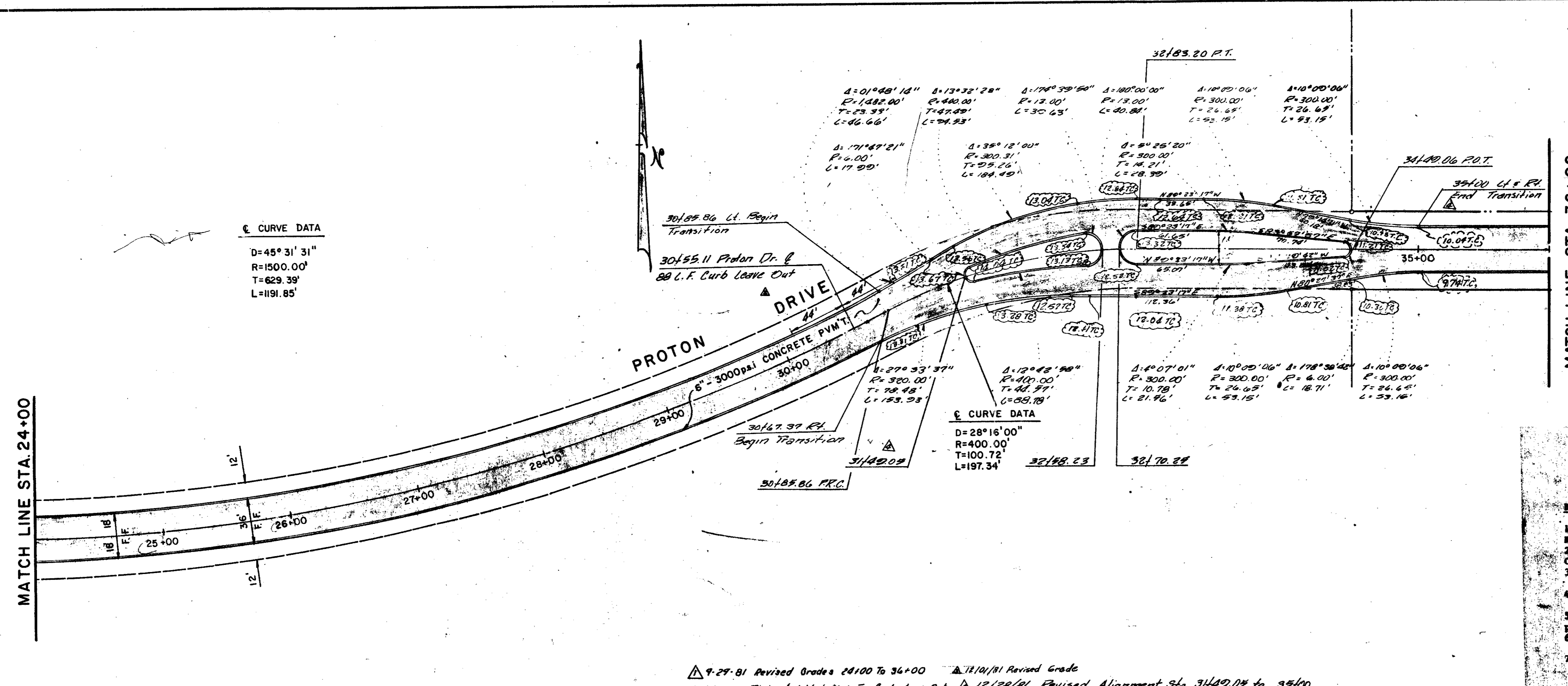
B.H. 10

DATE	
BY	
REVISION	
NO.	
PLAN	
REVISION	
NO.	

DATE	
BY	
REVISION	
NO.	
PROFILE	
REVISION	
NO.	

CURVE DATA
 D=45°31'31"
 R=1500.00'
 T=629.39'
 L=1191.85'

CURVE DATA
 D=28°16'00"
 R=400.00'
 T=100.72'
 L=197.34'



MATCH LINE STA. 36+00

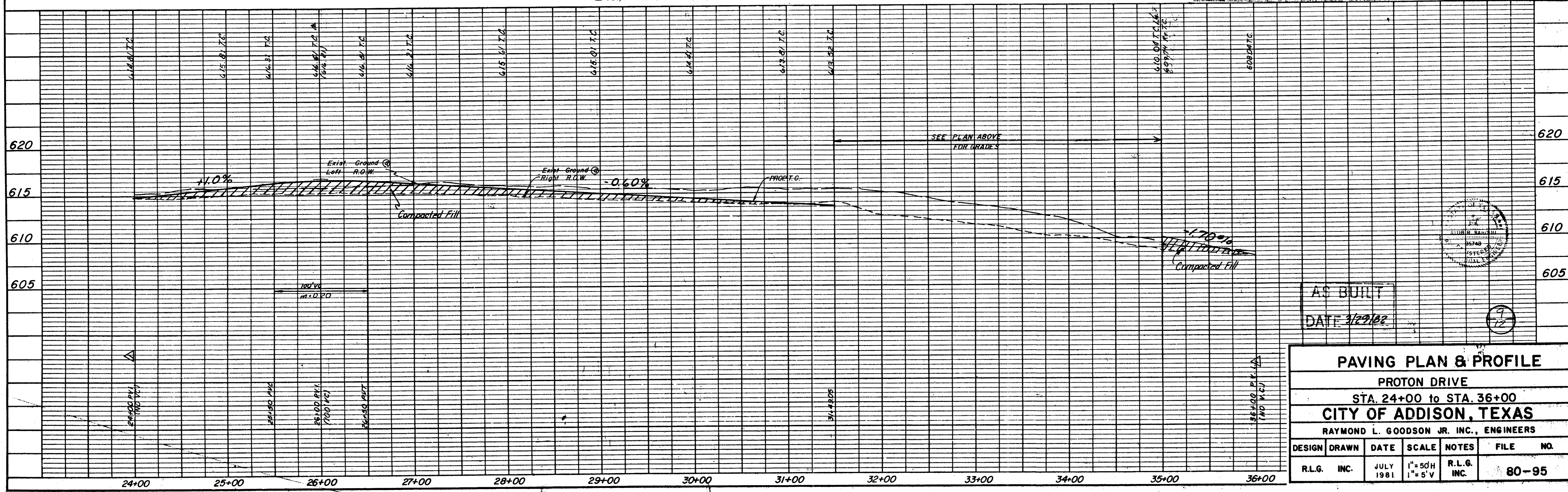
GENERAL NOTES

- All areas to receive fill shall be scarified to a depth of 6 inches and compacted to a density of 95% Standard Proctor Density. All fill shall be placed in horizontal layers not exceeding 8 inches (loose depth) and compacted to a density of 95% Standard Proctor with the moisture content within 4% of the optimum.
- The Contractor shall be entirely responsible for damage to existing utilities, streets, curbs, sidewalks and other structures of any kind during the execution of this work and shall be liable for damage to public or private property resulting therefrom.
- All materials and workmanship shall conform to the City of Addison Standards and Specifications, and to the contract specifications and documents.
- The location of all utilities are taken from existing public records. The exact location must be determined by the Contractor. It is the duty of the Contractor to ascertain whether any other facilities (additional), other than those on the plans may be present.

BRANCH MARKS

- Railroad Spike in 12" Willow 250' feet East Centerline Old Marsh Lane 6 7/8' East North Centerline Belt Line. Elev. 676.32
- "□" Top of Curb at the Center of a 10' inlet and 75' feet West of Centerline Commercial at the North Side of Belt Line Road. Elev. 580.83
- "□" Top of Concrete Footing at Southeast Corner Tower #13#-3#-T287. Elev. 597.83
- "□" Top of Concrete Footing at Northwest Corner Tower #12#-3#-T288. Elev. 605.20
- "□" Top of Concrete Footing at Northwest Corner Tower #12#-3#-T290 at angle point in Tower line. Elev. 613.16
- "□" Top of Concrete Footing at Southwest Corner Tower #12#-3#-T291. Elev. 619.46
- "□" Cut at top of Concrete Footing at Tower #12#-2#-T294. Elev. 607.46

9-29-81 Revised Grades 24+00 to 36+00 11/10/81 Revised Grade
 11/24/81 Revised Added 60 L.F. Curb Leave Out 12/28/81 Revised Alignment Sta. 31+40.00 to 35+00



AS BUILT
 DATE 3/22/82

PAVING PLAN & PROFILE					
PROTON DRIVE					
STA. 24+00 to STA. 36+00					
CITY OF ADDISON, TEXAS					
RAYMOND L. GOODSON JR. INC., ENGINEERS					
DESIGN	DRAWN	DATE	SCALE	NOTES	FILE NO.
R.L.G. INC.		JULY 1981	1"=50'H 1"=5'V	R.L.G. INC.	80-95

B.H. 10