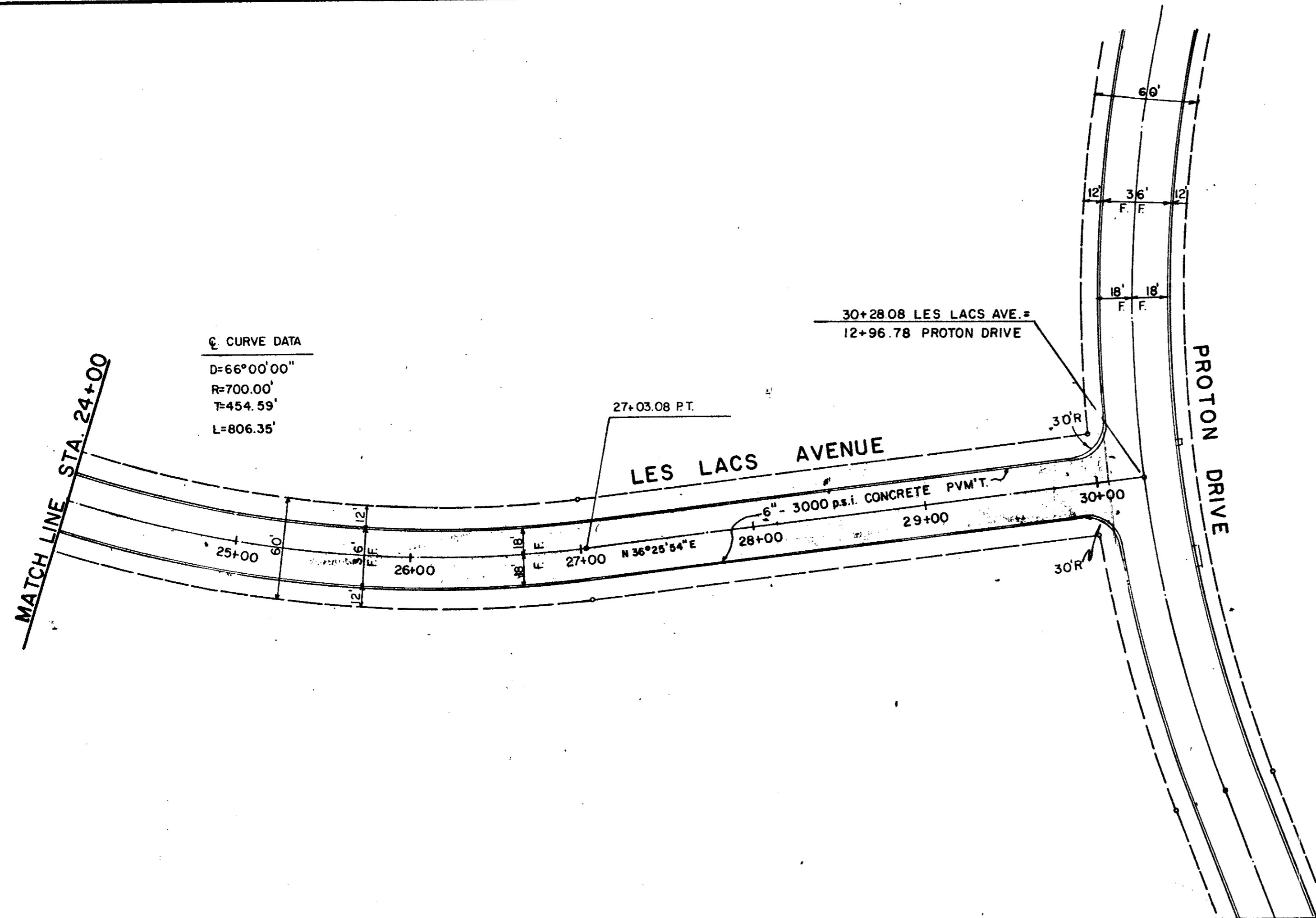
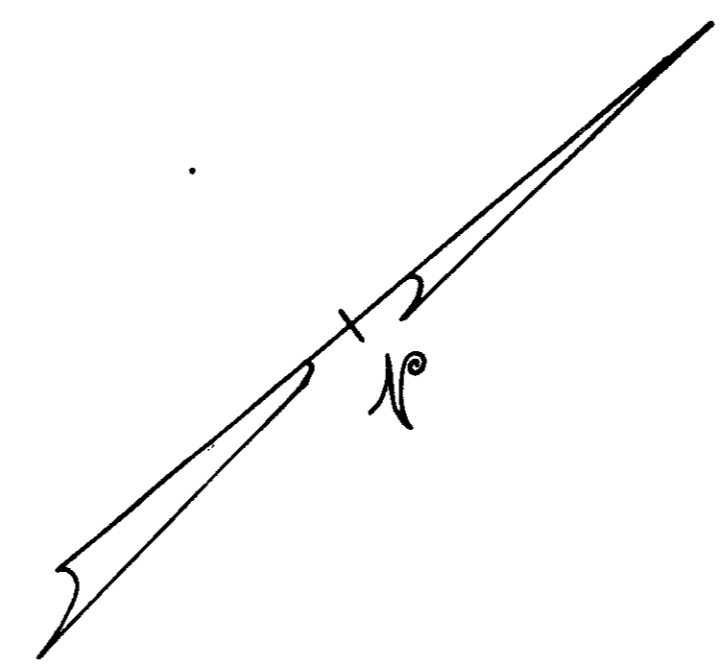


DATE	
BY	
REVISION	
NOTE BOOK	
NO. OF WAY CHECKS	
BY	
DATE	
BY	
DATE	



CURVE DATA  
 D=66°00'00"  
 R=700.00'  
 T=454.59'  
 L=806.35'



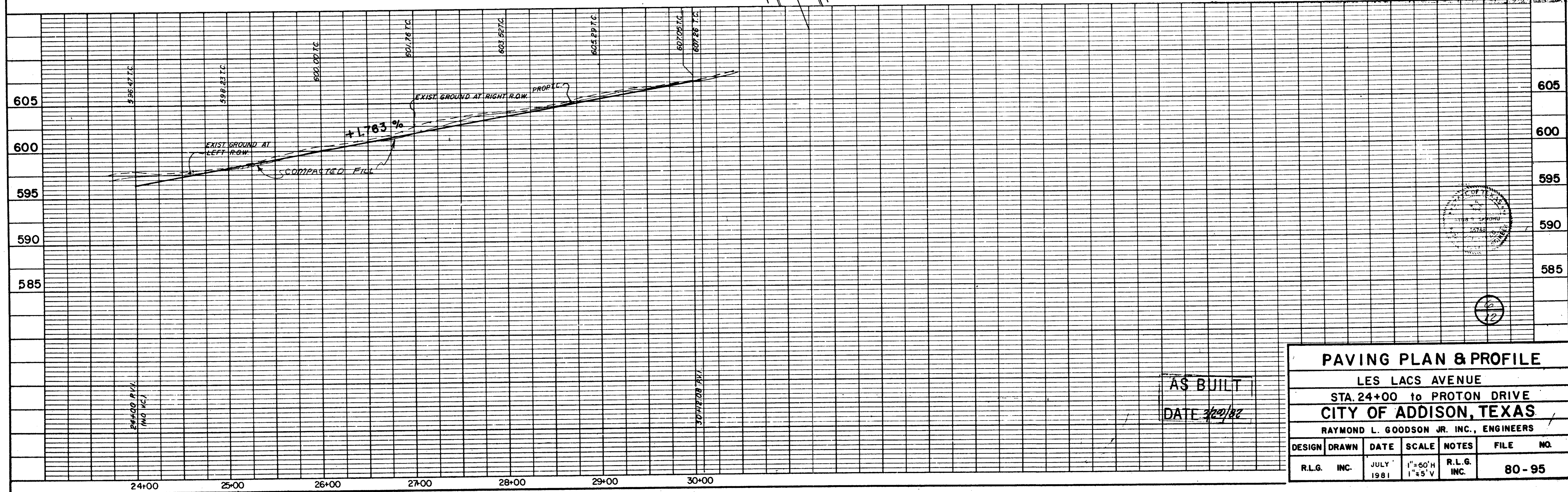
GENERAL NOTES

- All areas to receive fill shall be scarified to a depth of 6 inches and compacted to a density of 95% Standard Proctor Density. All fill shall be placed in horizontal layers not exceeding 8 inches (loose depth) and compacted to a density of 95% Standard Proctor with the moisture content within 4% of the optimum.
- The Contractor shall be entirely responsible for damage to existing utilities, streets, curbs, sidewalks and other structures of any kind during the execution of this work and shall be liable for damage to public or private property resulting therefrom.
- All materials and workmanship shall conform to the City of Addison Standards and Specifications, and to contract specifications and documents.
- The location of all utilities are taken from existing public records. The exact location must be determined by the Contractor. It is the duty of the Contractor to ascertain whether any other facilities (additional), other than those on the plans may be present.

BENCH MARKS

- Railroad Spike in 12" Willow 250± feet East Centerline Old Marsh Lane & 75± feet North Centerline Belt Line. Elev. 576.38
- "□" Top of Curb at the Center of a 10' inlet and 75± feet West of Centerline Commercial at the North Side of Belt Line Road. Elev. 580.83
- "□" Top of Concrete Footing at Northeast Corner Tower #128-34-T287. Elev. 597.83
- "□" Top of Concrete Footing at Northwest Corner Tower #128-34-T288. Elev. 605.20
- "□" Top of Concrete Footing at Northwest Corner Tower #128-34-T290 at angle point in Tower line. Elev. 613.16
- "□" Top of Concrete Footing at Southwest Corner Tower #128-34-T291. Elev. 619.46
- "□" Cut at top of Concrete Footing at Tower #128-24-T294. Elev. 607.46

DATE	
BY	
REVISION	
NOTE BOOK	
NO. OF WAY CHECKS	
BY	
DATE	
BY	
DATE	



AS BUILT  
 DATE 7/20/81

PAVING PLAN & PROFILE						
LES LACS AVENUE						
STA. 24+00 to PROTON DRIVE						
CITY OF ADDISON, TEXAS						
RAYMOND L. GOODSON JR. INC., ENGINEERS						
DESIGN	DRAWN	DATE	SCALE	NOTES	FILE	NO.
R.L.G. INC.		JULY 1981	1"=60'H 1"=5'V	R.L.G. INC.		80-95