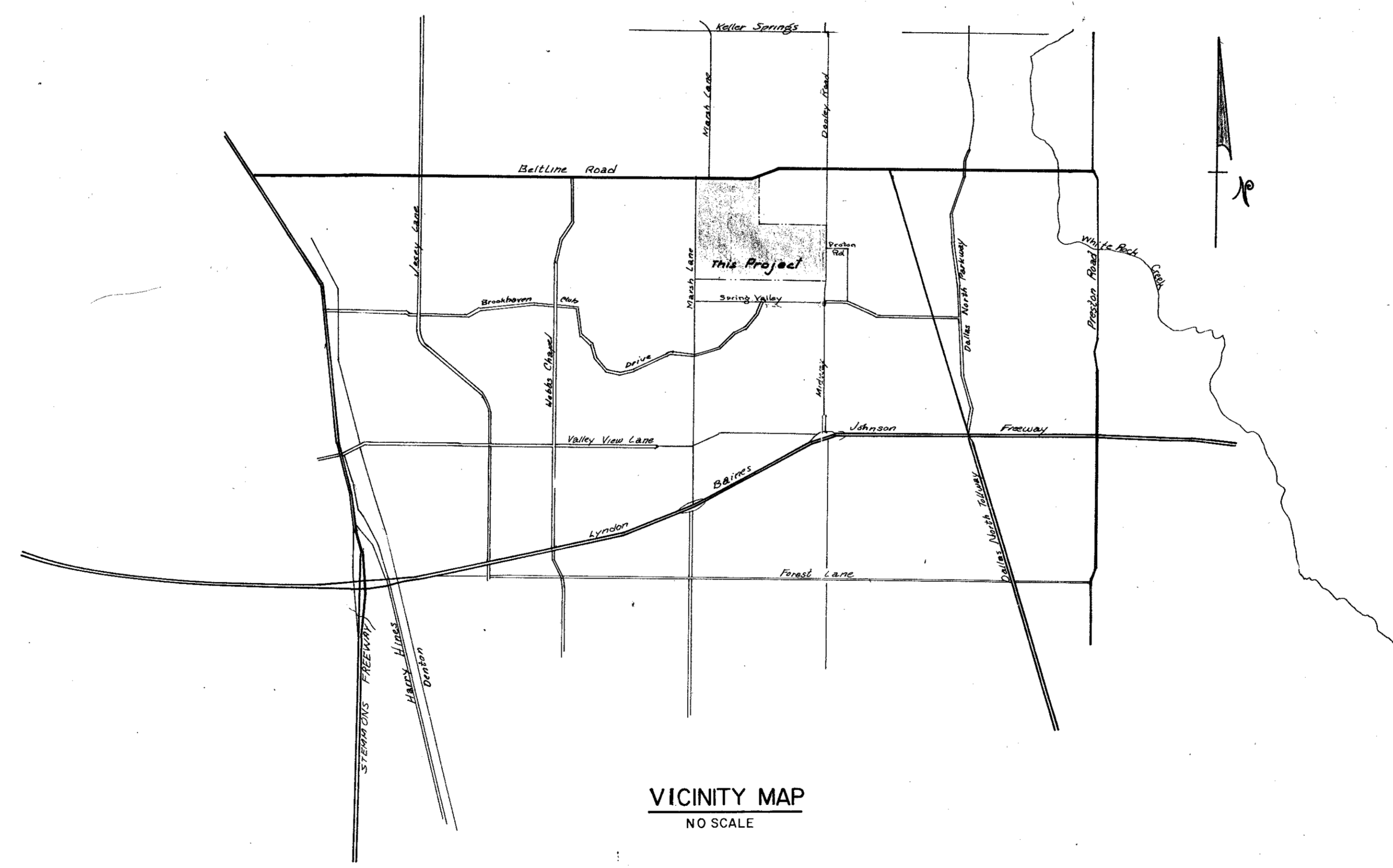


# LES LACS VILLAGE

DESIGNED FOR

LES LACS VILLAGE, INCORPORATED



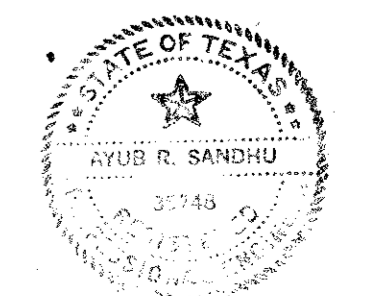
VICINITY MAP  
NO SCALE

### INDEX

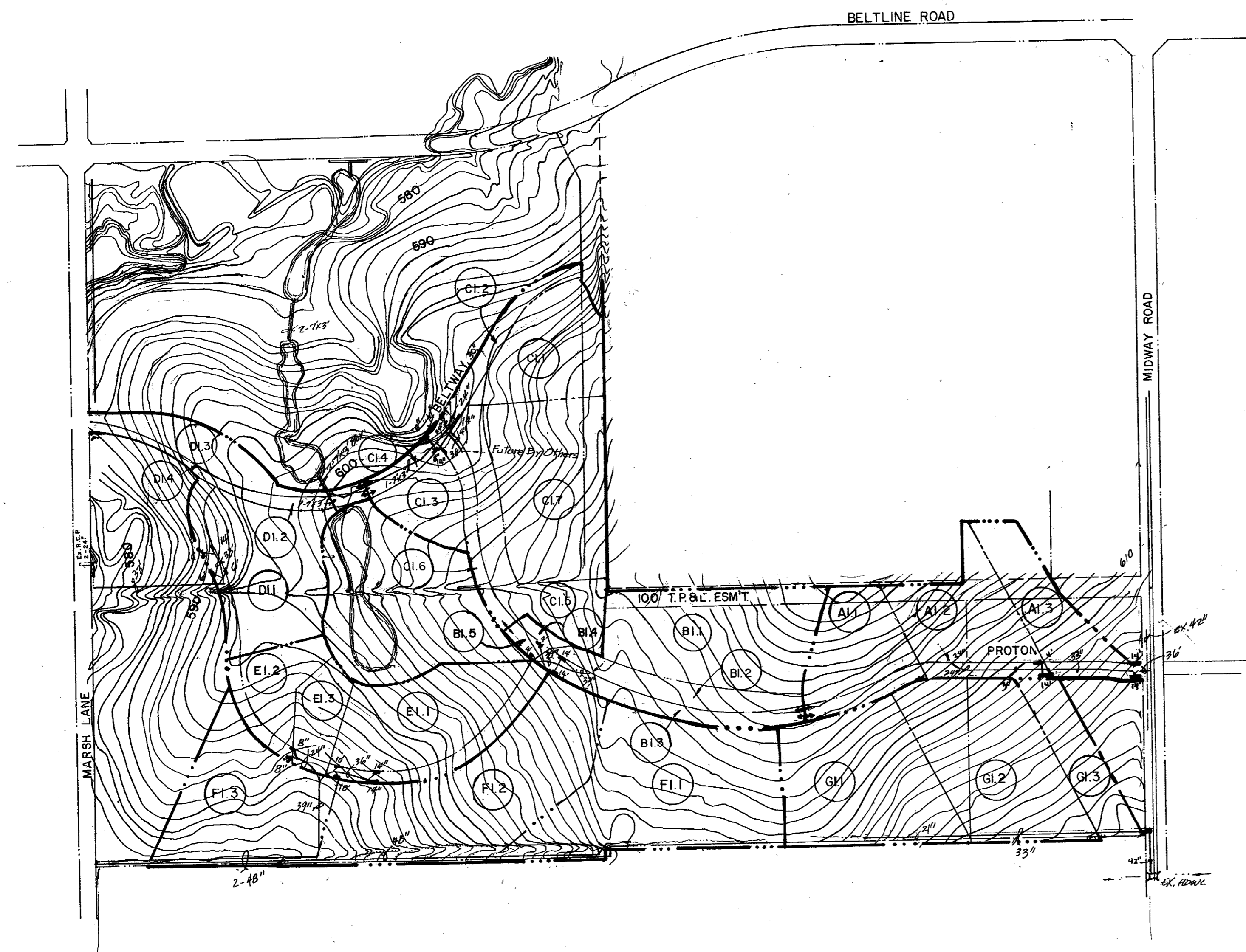
- TITLE SHEET
- $\frac{1}{12}$  to  $\frac{13}{12}$  - PAVING PLANS
- $\frac{1}{9}$  - DRAINAGE AREA MAP
- $\frac{2}{9}$  to  $\frac{5}{9}$  - STORM SEWER PROFILES
- $\frac{1}{9}$  to  $\frac{3}{9}$  - WATER & SANITARY SEWER PLAN
- $\frac{4}{9}$  to  $\frac{5}{9}$  - WATER PROFILES
- $\frac{6}{9}$  to  $\frac{8}{9}$  - SANITARY SEWER PROFILES
- DETAILS

DESIGNED BY

RAYMOND J. COOPERSON, INCORPORATED CONSULTING ENGINEERS



APPROVED  
DATE 3/27/02



- LEGEND**
- DRAINAGE DIVIDE LINE
  - (DI) DRAINAGE AREA NUMBER
  - 30" 18" 10" STORM SEWER AND INLETS

LINE	NO.	ACRES	C	TIME	I	O	SIZE	REMARKS
A	AI.1	6.06	0.7	15	6.6	28.0		FROM FUTURE SYSTEM
	AI.2	7.3	"	"	"	33.7	2-14'	5.8 BY PASS
	AI.3	4.7	0.8	10	7.5	31.7	2-14'	9.5 "
B	BI.1	10.6	0.7	15	6.6	49.0		INTO FUTURE SYSTEM
	BI.2	2.6	"	"	"	12.0		TO BI.3
	BI.3	"	0.9	10	7.5	17.6	2-14'	NO BY PASS
	BI.4	0.6	0.7	"	6.6	2.8		TO BI.5
	BI.5	0.5	0.9	"	7.5	3.4	2-4'	NO BY PASS
C	CI.1	6.3	0.3	15	6.6	12.5		12.5 TO CI.2
	CI.2	1.8	0.9	"	"	10.7	2-14'	10.7 + 12.5 TO CI.6
	CI.3	2.9	0.7	"	"	13.4		13.4 TO CI.4
	CI.4	0.6	0.9	"	"	3.6	2-8'	1.0 BY PASS
	CI.5	5.1	0.7	"	"	23.6		23.6 TO CI.6
	CI.6	2.0	0.9	"	"	11.9	2-14'	7.5 BY PASS
	CI.7	10.0	0.7	15	6.6	46.2	2-14'	FUTURE DEVELOPMENT
D	DI.1	10.3	0.7	15	6.6	53.5	2-14' 82-6'	SAG
	DI.2	1.3	0.9	10	7.5	8.8		INTO DI.1
	DI.3	2.7	0.8	"	7.5	18.2		INTO MARSH LANE
	DI.4	0.6	0.9	"	"	4.0		" " "
E	EI.1	8.2	0.7	15	6.6	38.0	2-14'	10.0 BY PASS
	EI.2	3.8	"	"	"	17.5	2-8'	1.5 " "
	EI.3	2.8	"	"	"	12.9	2-10'	SAG (68.4 TOTAL)
F	FI.1	15.4	0.7	15	6.6	71.1		
	FI.2	14.0	"	"	"	64.7		
	FI.3	9.2	"	"	"	42.5		
G	GI.1	10.6	0.7	15	6.6	49.0		
	GI.2	11.7	0.8	"	"	61.8		
	GI.3	4.1	0.8	"	"	21.6		



1/5

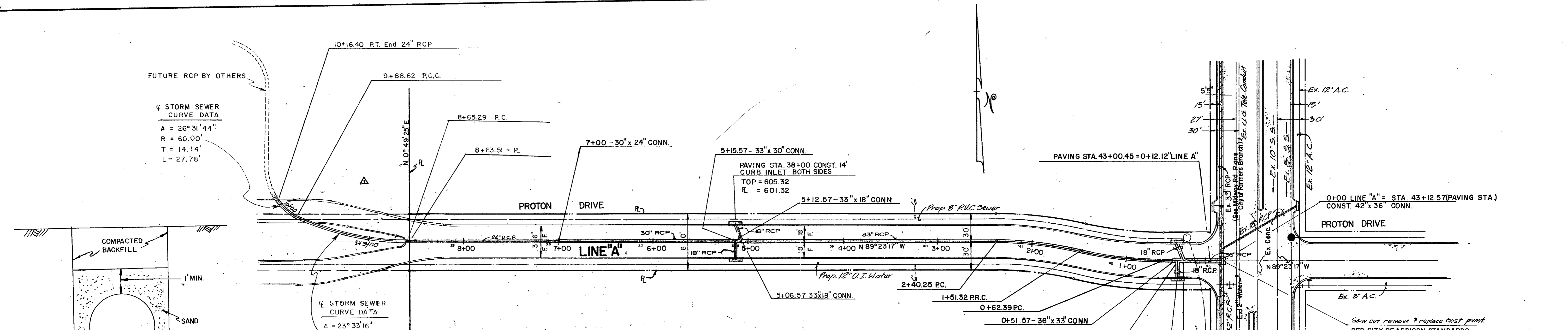
AS BUILT  
DATE 3/29/82

DRAINAGE AREA MAP					
RAYMOND L. GOODSON JR., INC., CONSULTING ENGINEERS					
CITY OF ADDISON, TEXAS					
DESIGN	DRAWN	DATE	SCALE	NOTES	FILE NO.
R.L.G.		JULY 1981	1"=400'	R.L.G.	80-95



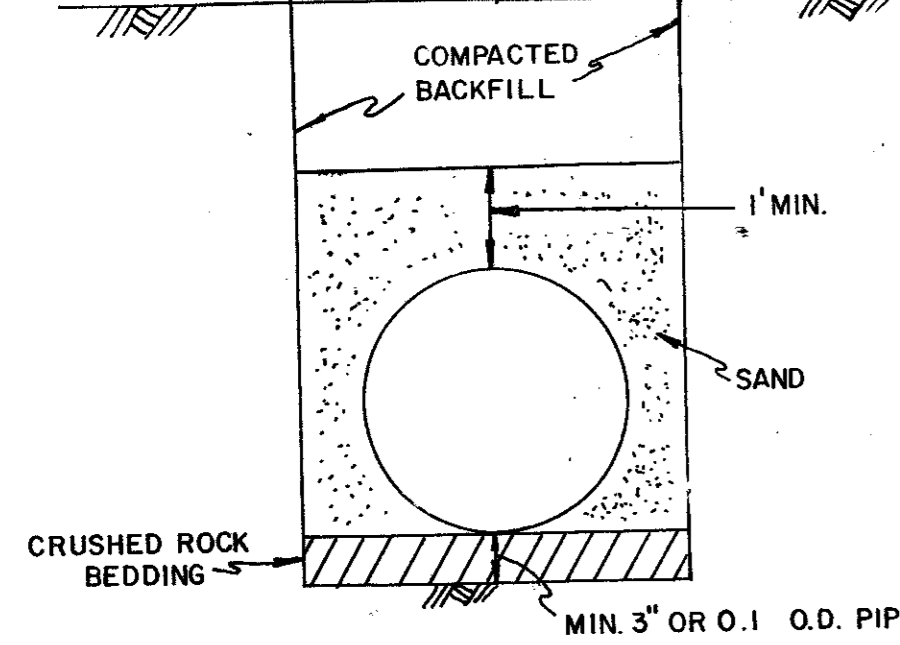
APR 13 1981

DATE	
BY	
CHECKED	
REVISION	
NO.	
PLAN	
NOTE BOOK	
NO.	



⊙ STORM SEWER CURVE DATA  
 A = 26° 31' 44"  
 R = 60.00'  
 T = 14.14'  
 L = 27.78'

⊙ STORM SEWER CURVE DATA  
 A = 23° 33' 16"  
 R = 300.00'  
 T = 62.55'  
 L = 123.33'



STORM DRAIN BEDDING DETAIL  
 NO SCALE

GENERAL NOTES

- All Reinforced Concrete Pipe shall be Class III unless otherwise noted.
- The location of all utilities are taken from existing public records. The exact location must be determined by the Contractor. It is the duty of the Contractor to ascertain whether any other facilities (additional), other than those on the plans may be present.
- Embedment is Subsidiary To RCP
- All backfill shall be compacted to 90% Standard Proctor Density in a maximum of six 8-inch lifts.
- All work and materials shall be in accordance with the City of Addison Standards and Specifications and to contract specifications and documents.

⊙ CURVE DATA  
 A 12° 44' 18"  
 R 400.00'  
 T 44.65'  
 L 88.94'

PAVING STA. 42+64 CONST. 14' CURB INLET BOTH SIDES  
 TOP = 598.68  
 E = 594.68  
 Q = 42.57  
 36" x 18" CONN.

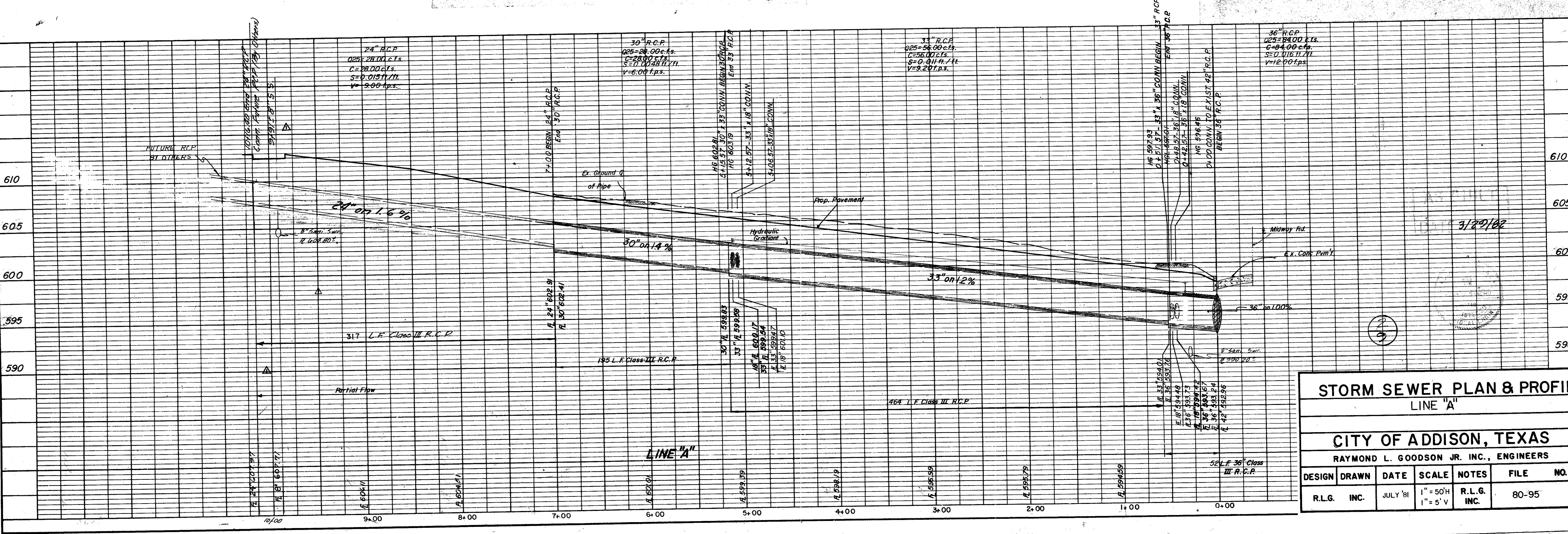
⊙ CURVE DATA  
 A 12° 44' 18"  
 R 400.00'  
 T 44.65'  
 L 88.94'

BENCH MARKS

- Railroad Spike in 12" Willow 250+ feet East Centerline Old Marsh Lane & 75+ feet North Centerline Belt Line. Elev. 576.32
- "□" Top of Curb at the Center of a 10' Inlet and 75+ feet West of Centerline Commercial at the North Side of Belt Line Road. Elev. 580.83
- "□" Top of Concrete Footing at Southeast Corner Tower #13N-3W-T287. Elev. 597.83
- "□" Top of Concrete Footing at Northwest Corner Tower #12N-3W-T288. Elev. 605.20
- "□" Top of Concrete Footing at Northwest Corner Tower #12N-3W-T290 at angle point in Tower line. Elev. 613.16
- "□" Top of Concrete Footing at Southwest Corner Tower #12N-3W-T291. Elev. 619.46
- "□" Cut at top of Concrete Footing at Tower #12N-3W-T294. Elev. 607.46

11/23/81 Revised Line A Sta. 8145.29 - 10/10.40

DATE	
BY	
CHECKED	
REVISION	
NO.	
PROFILE	
NOTE BOOK	
NO.	



**STORM SEWER PLAN & PROFILE**  
**LINE "A"**

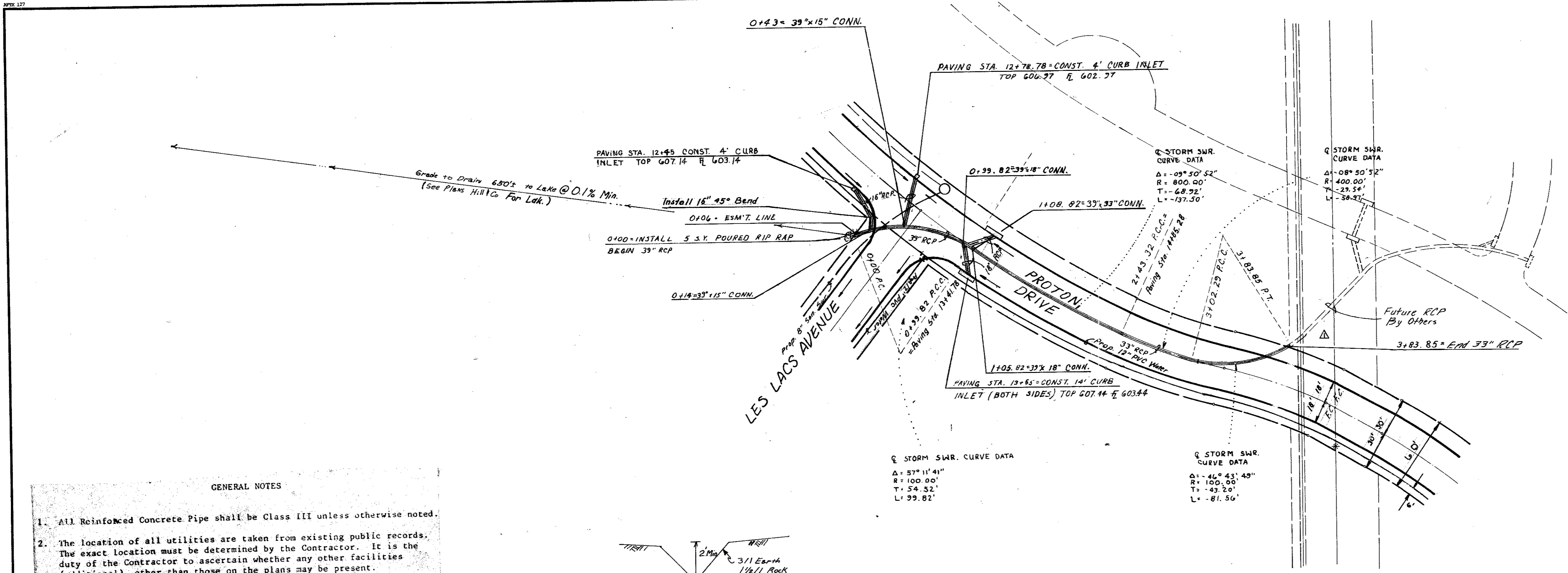
**CITY OF ADDISON, TEXAS**  
 RAYMOND L. GOODSON JR. INC., ENGINEERS

DESIGN	DRAWN	DATE	SCALE	NOTES	FILE NO.
R.L.G.	INC.	JULY '81	1" = 50'H 1" = 5'V	R.L.G. INC.	80-95

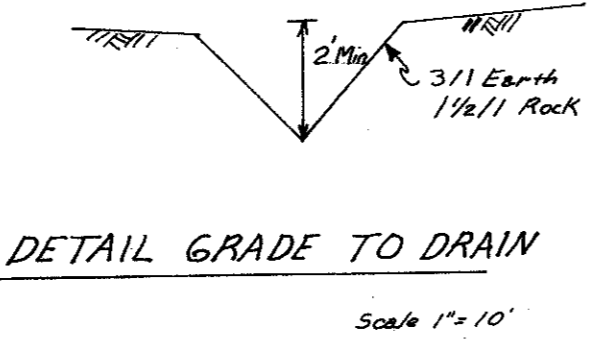


DATE	
BY	
REVISION	
NO.	
PLAN	
NOTE BOOK	
NO.	

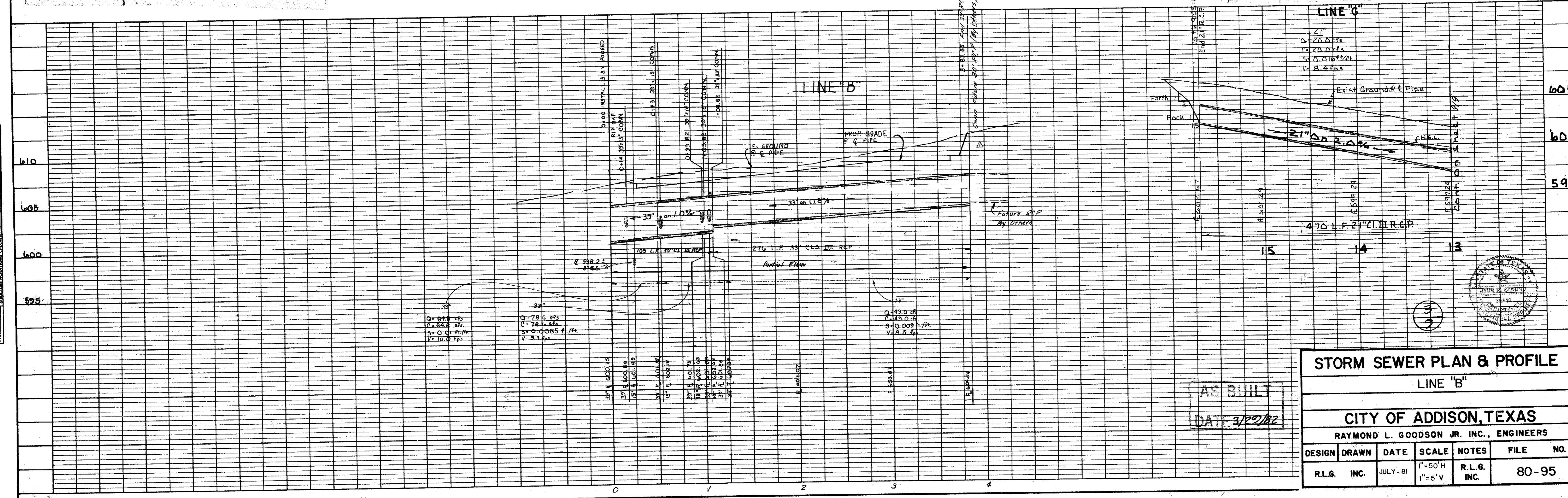
DATE	
BY	
REVISION	
NO.	
PROFILE	
NOTE BOOK	
NO.	



- GENERAL NOTES**
- All Reinforced Concrete Pipe shall be Class III unless otherwise noted.
  - The location of all utilities are taken from existing public records. The exact location must be determined by the Contractor. It is the duty of the Contractor to ascertain whether any other facilities (additional), other than those on the plans may be present.
  - Embedment is subsidiary to RCP.
  - All backfill shall be compacted to 90% Standard Proctor Density in a maximum of six 8-inch lifts.
  - All work and materials shall be in accordance with the City of Addison Standards and Specifications and to contract specifications and documents.



- BENCH MARKS**
- Railroad Spike in 12" Willow 250' East Centerline Old Marsh Lane & 75' North Centerline Belt Line. Elev. 576.32
  - "□" Top of Curb at the Center of a 10' inlet and 75' West of Centerline Commercial at the North Side of Belle Line Road. Elev. 580.83
  - "□" Top of Concrete Footing at Southeast Corner Tower #12N-3W-T287. Elev. 597.83
  - "□" Top of Concrete Footing at Northwest Corner Tower #12N-3W-T288. Elev. 605.20
  - "□" Top of Concrete Footing at Northwest Corner Tower #12N-3W-T290 at a Le point in Tower line. Elev. 613.16
  - "□" Top of Concrete Footing at Southwest Corner Tower #12N-3W-T291. Elev. 619.46
  - "□" Cut at top of Concrete Footing at Tower #12N-3W-T294. Elev. 607.46



**STORM SEWER PLAN & PROFILE**  
LINE "B"

**CITY OF ADDISON, TEXAS**  
RAYMOND L. GOODSON JR. INC., ENGINEERS

DESIGN	DRAWN	DATE	SCALE	NOTES	FILE NO.
R.L.G. INC.	INC.	JULY - 81	1" = 50' H 1" = 5' V	R.L.G. INC.	80-95

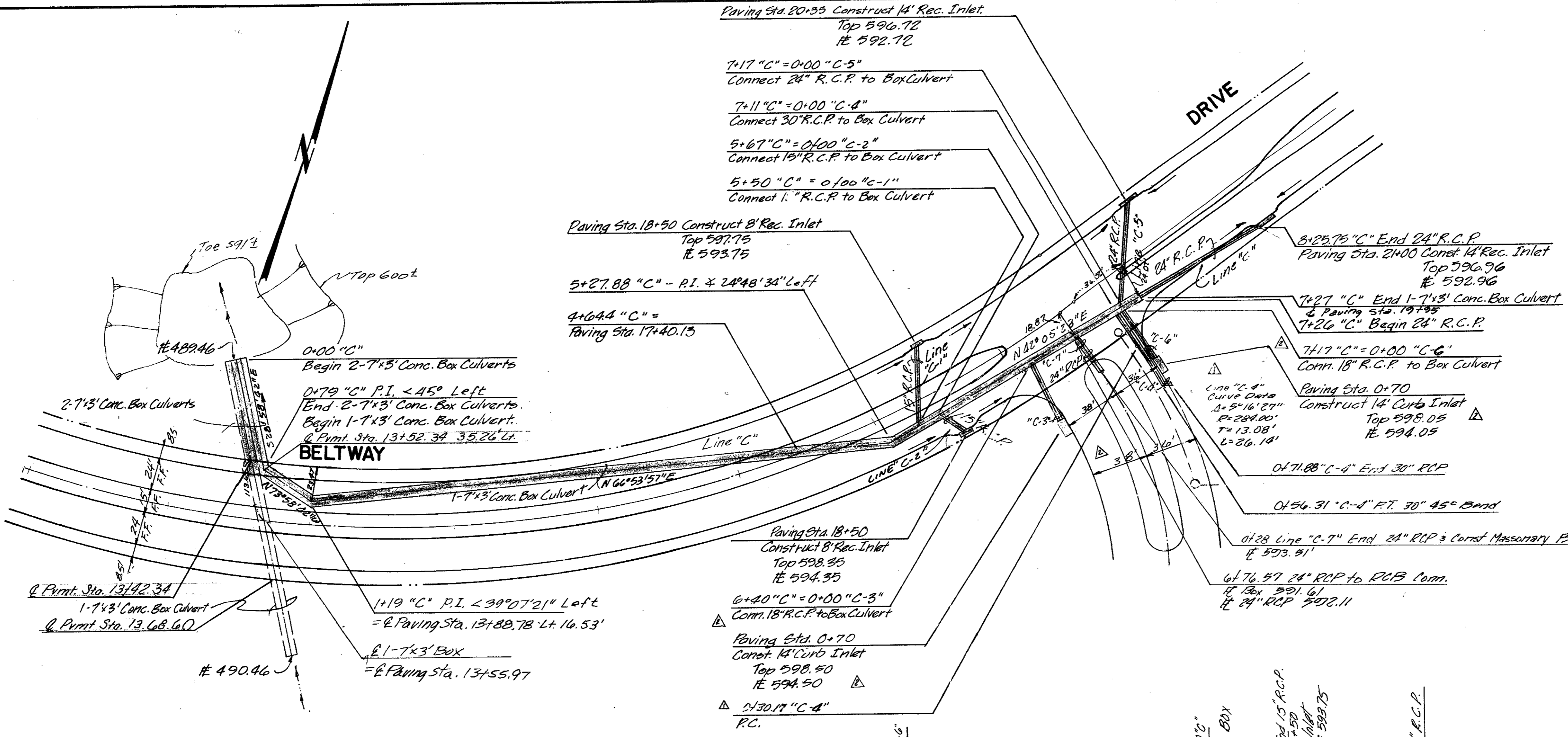


- 1. All Reinforced Concrete Pipe shall be Class III unless otherwise noted.
- 2. The location of all utilities are taken from existing public records. The exact location must be determined by the Contractor. It is the duty of the Contractor to ascertain whether any other facilities (additional), other than those on the plans may be present.
- 3. Embedment is subsidiary to RCP.
- 4. All backfill shall be compacted to 90% Standard Proctor Density in a maximum of six 8-inch lifts.
- 5. All work and materials shall be in accordance with the City of Addison Standards and Specifications and to contract specifications and documents.

11/23/81 Revised Line "C-4"  
 12/10/81 Revised Inlets Pmt Sta. 0160 to 0190  
 (New Dimensions From 8)

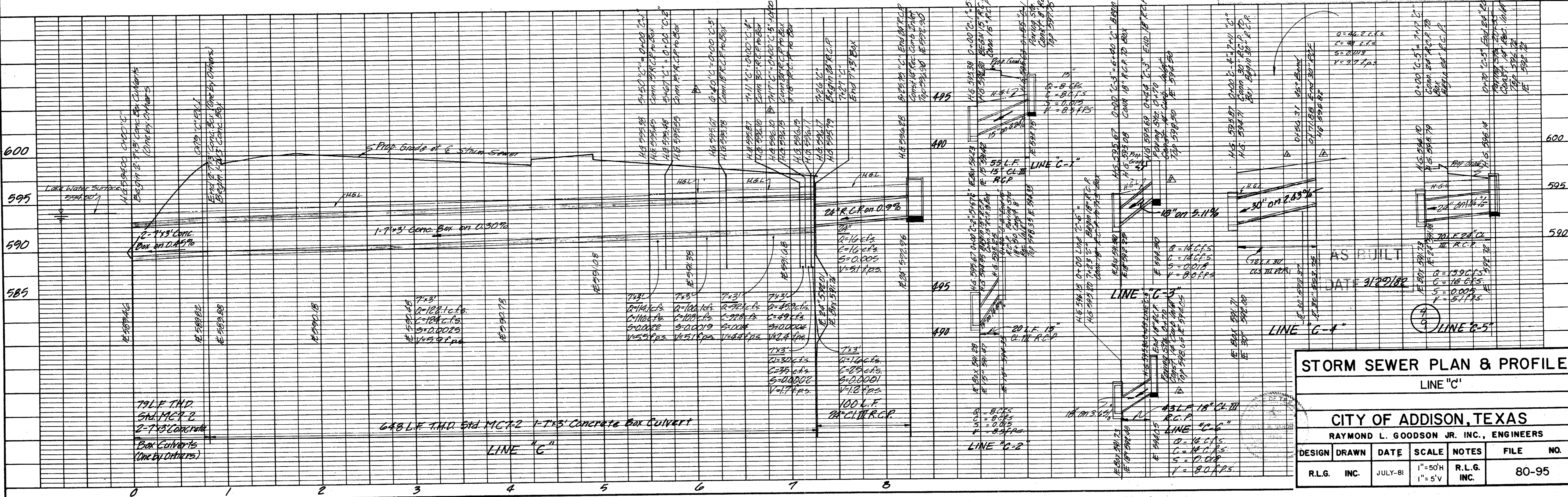
BENCH MARKS

- 1. Railroad Spike in 12" Willow 250+ feet East Centerline Old Marsh Lane & 75+ feet North Centerline Belt Line. Elev. 576.32
- 2. "□" Top of Curb at the Center of a 10' inlet and 75+ feet West of Centerline Commercial at the North Side of Belt Line Road. Elev. 580.83
- 3. "□" Top of Concrete Footing at Southeast Corner Tower #12N-3W-T287. Elev. 597.83
- 4. "□" Top of Concrete Footing at Northwest Corner Tower #12N-3W-T288. Elev. 605.20
- 5. "□" Top of Concrete Footing at Northwest Corner Tower #12N-3W-T290 at angle point in Tower line. Elev. 613.16
- 6. "□" Top of Concrete Footing at Southwest Corner Tower #12N-3W-T291. Elev. 619.46
- 7. "□" Cut at top of Concrete Footing at Tower #12N-2W-T294. Elev. 607.46



DATE	BY	REVISION

DATE	BY	REVISION



**STORM SEWER PLAN & PROFILE**  
 LINE "C"

CITY OF ADDISON, TEXAS  
 RAYMOND L. GOODSON JR. INC., ENGINEERS

DESIGN	DRAWN	DATE	SCALE	NOTES	FILE NO.
R.L.G.	INC.	JULY-81	1"=50'H 1"=5'V	R.L.G. INC.	80-95

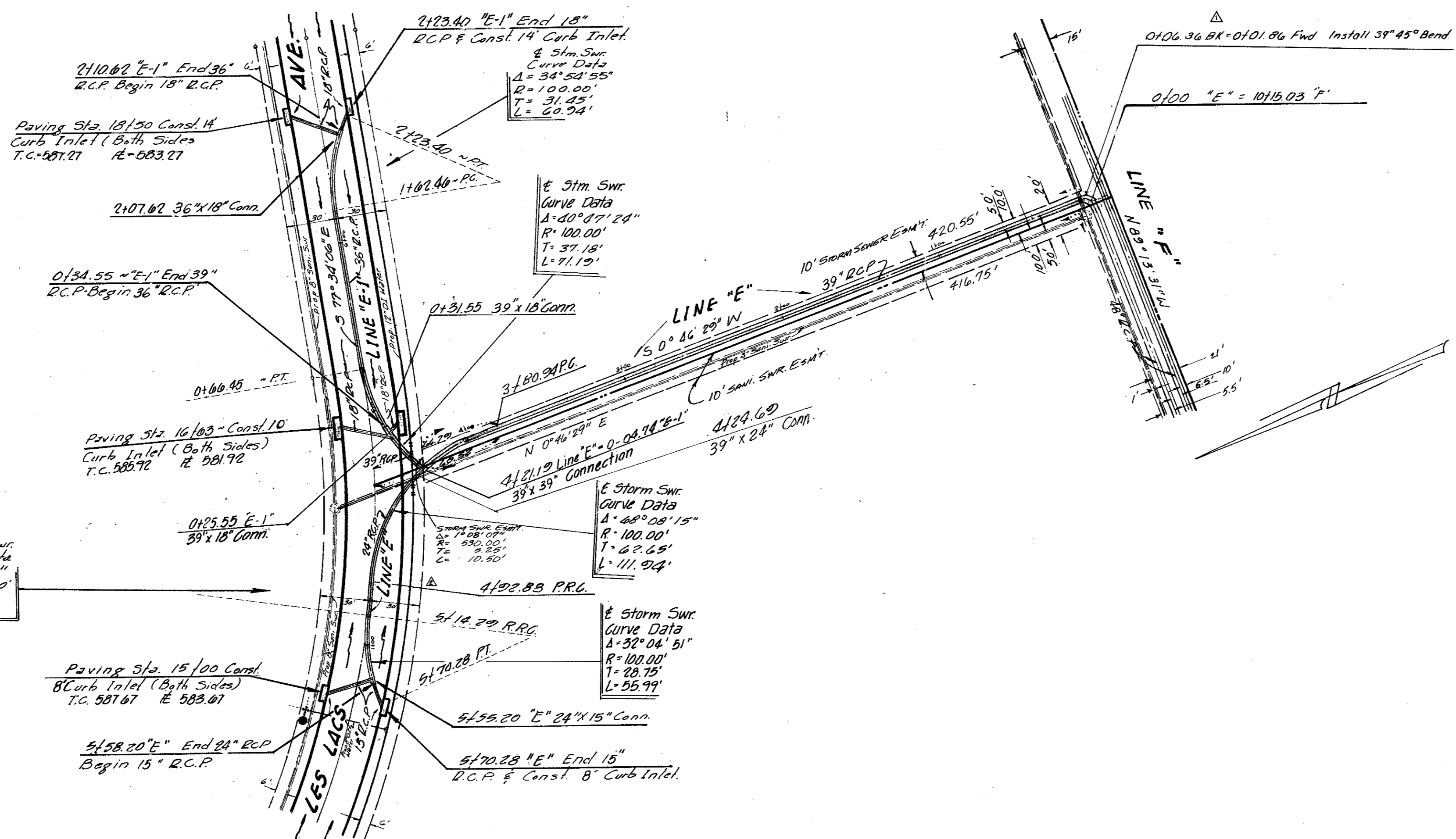






DATE	
BY	
REVISION	
APPROVED	
NOTE BOOK	
NO.	

DATE	
BY	
REVISION	
APPROVED	
NOTE BOOK	
NO.	



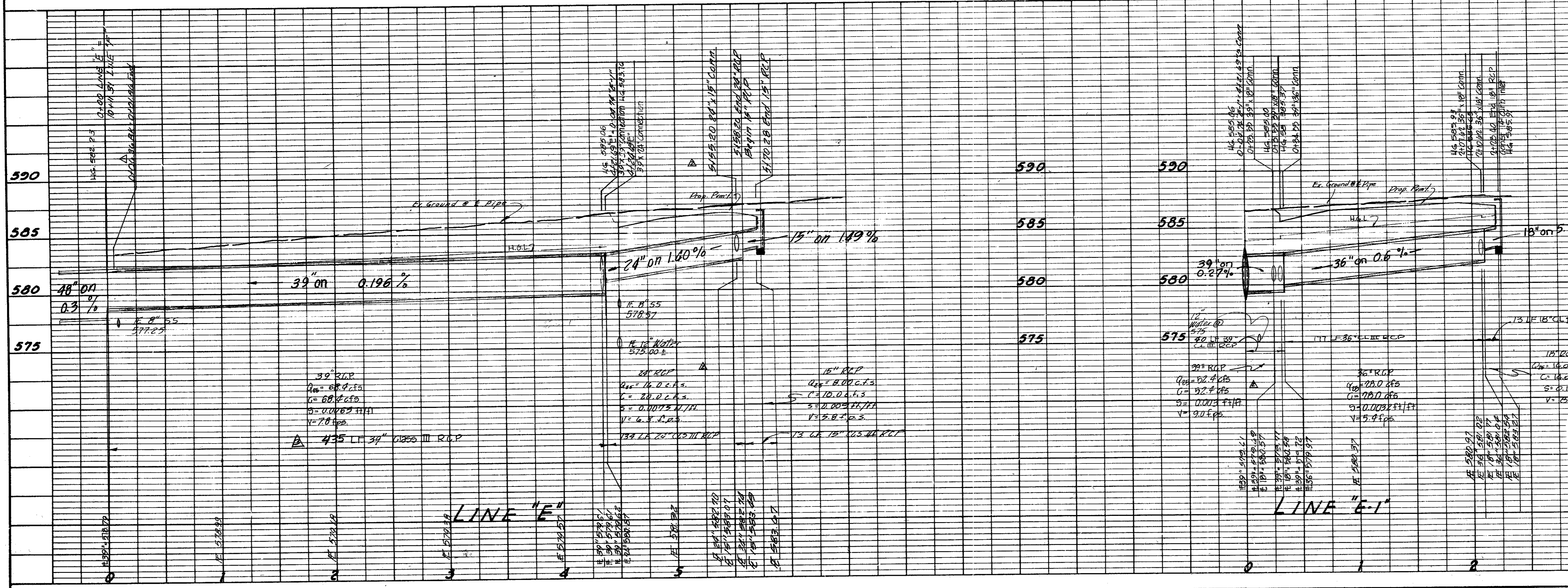
GENERAL NOTES

1. All Reinforced Concrete Pipe shall be Class III unless otherwise noted.
2. The location of all utilities are taken from existing public records. The exact location must be determined by the Contractor. It is the duty of the Contractor to ascertain whether any other facilities (additional), other than those on the plans may be present.
3. Embedment is subsidiary to R.C.P.
4. All backfill shall be compacted to 90% Standard Proctor Density in a maximum of six 8-inch lifts.
5. All work and materials shall be in accordance with the City of Addison Standards and Specifications and to contract specifications and documents.

BENCH MARKS

1. Railroad Spike in 12" Willow 250+ feet East Centerline Old Marsh Lane & 75+ feet North Centerline Belt Line. Elev. 576.32
2. "□" Top of Curb at the Center of a 10' inlet and 75+ feet West of Centerline Commercial at the North Side of Belt Line Road. Elev. 580.83
3. "□" Top of Concrete Footing at Southeast Corner Tower #13N-3W-T287. Elev. 597.83
4. "□" Top of Concrete Footing at Northwest Corner Tower #12N-3W-T288. Elev. 605.20
5. "□" Top of Concrete Footing at Northwest Corner Tower #12N-3W-T290 at angle point in Tower line. Elev. 613.16
6. "□" Top of Concrete Footing at Southwest Corner Tower #12N-3W-T291. Elev. 619.46
7. "□" Cut at top of Concrete Footing at Tower #12N-2W-T294. Elev. 607.46

12/9-30/81 Revised Stations    12/08/81 REVISED QUANTITY LINE E  
 12/10/81 Revised Line E-1



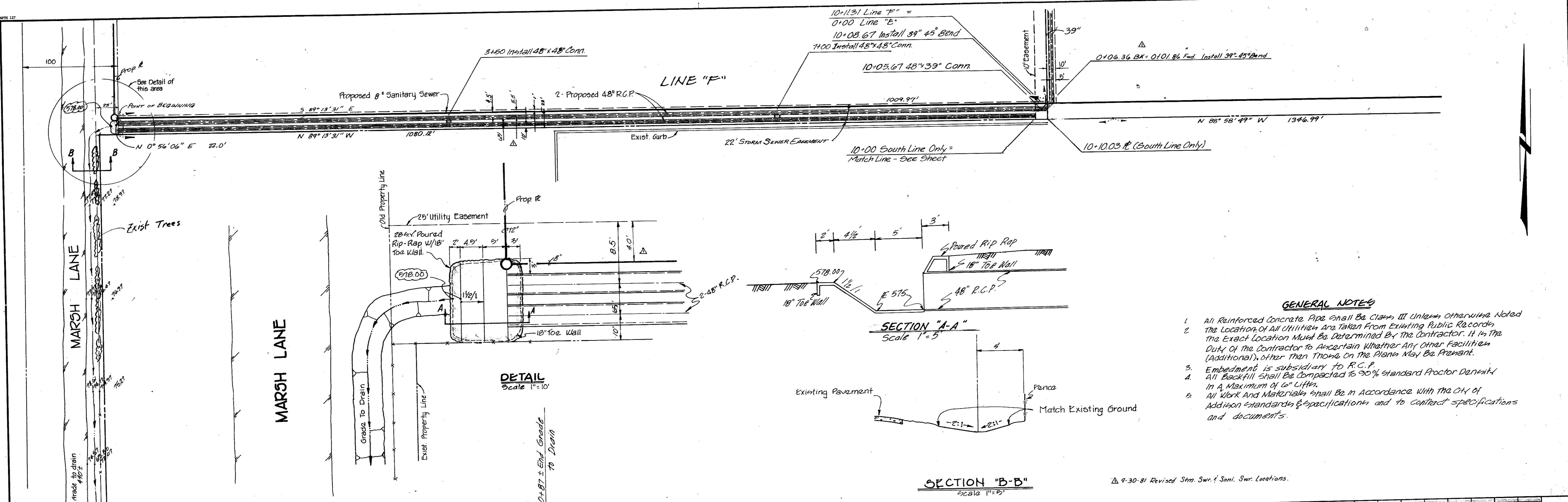
AS BUILT  
 DATE 3/29/82

<b>STORM SEWER PLAN &amp; PROFILE</b>					
LINE "E" & LINE "E-1"					
CITY OF ADDISON, TEXAS					
RAYMOND L. GOODSON JR. INC., ENGINEERS					
DESIGN	DRAWN	DATE	SCALE	NOTES	FILE NO.
R.L.G.	INC.	JULY-81	1"=50' 1"=5' V	R.L.G. INC.	80-45

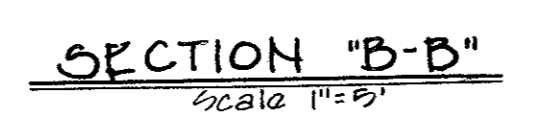
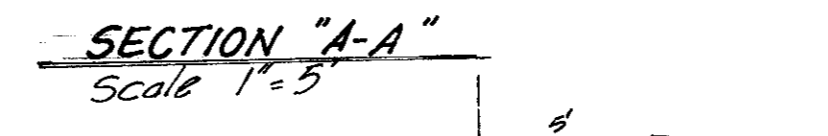


PLAN	DATE
BY	
CHECKED	
DATE	
NO.	

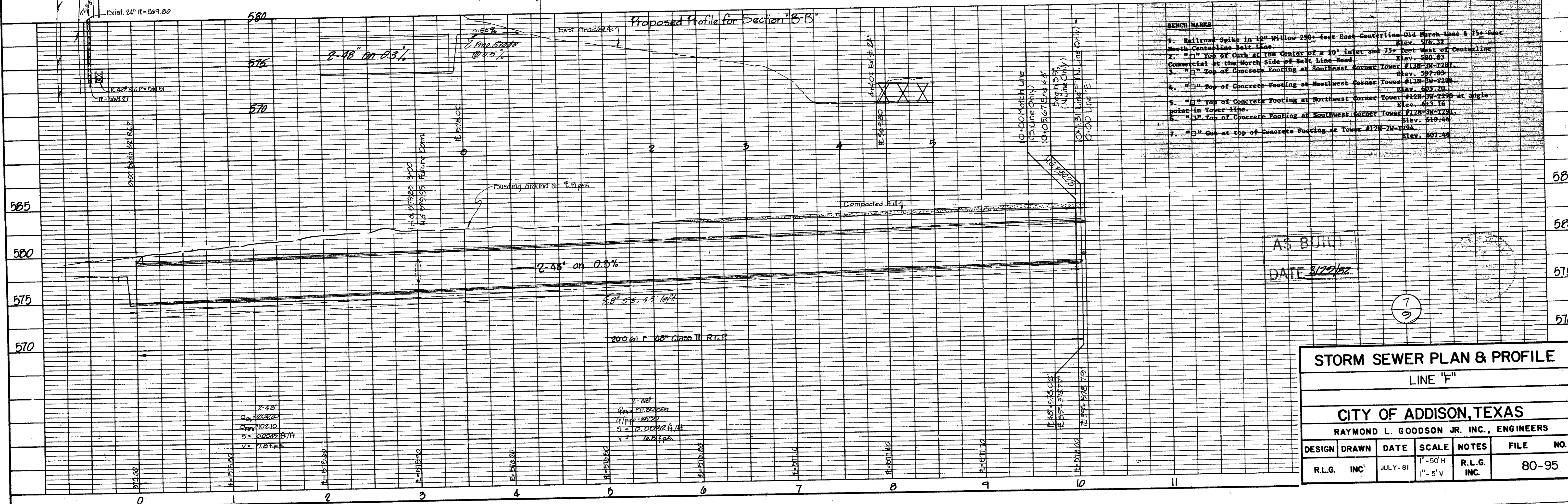
PROFILE	DATE
BY	
CHECKED	
DATE	
NO.	



- GENERAL NOTES**
- All Reinforced Concrete Pipe shall be Class III Unless otherwise Noted
  - The Location of All Utilities are Taken From Existing Public Records. The Exact Location Must Be Determined By The Contractor. It is The Duty of The Contractor to Ascertain Whether Any Other Facilities (Additional), other than Those On The Plans May Be Present.
  - Embedment is subsidiary to R.C.P.
  - All Backfill shall be compacted to 95% standard Proctor Density in a Maximum of 6" Lifts.
  - All Work And Materials shall be in Accordance With The City of Addison standards & specifications and to contract specifications and documents.



Δ 9-30-81 Revised Stm. Swr. & Sani. Swr. Locations.



**BENCH MARKS**

1. Railroad Spike in 12" Willow 250+ feet East Centerline Old Marsh Lane & 75+ feet North Centerline Belt Lane	Elev. 576.37
2. " " " Top of Curb at the Center of a 10' Inlet and 75+ feet West of Centerline Commercial at the North Side of Belt Lane Road	Elev. 580.83
3. " " " Top of Concrete Footing at Southeast Corner Tower #12N-3M-1287	Elev. 597.83
4. " " " Top of Concrete Footing at Northwest Corner Tower #12N-3M-1288	Elev. 585.23
5. " " " Top of Concrete Footing at Northwest Corner Tower #12N-3M-1290 at angle point in tower line	Elev. 613.16
6. " " " Top of Concrete Footing at Southwest Corner Tower #12N-3M-1281	Elev. 619.46
7. " " " Cut at top of Concrete Footing at Tower #12N-2M-1294	Elev. 607.46

AS BUILT  
DATE 3/22/82

7  
9

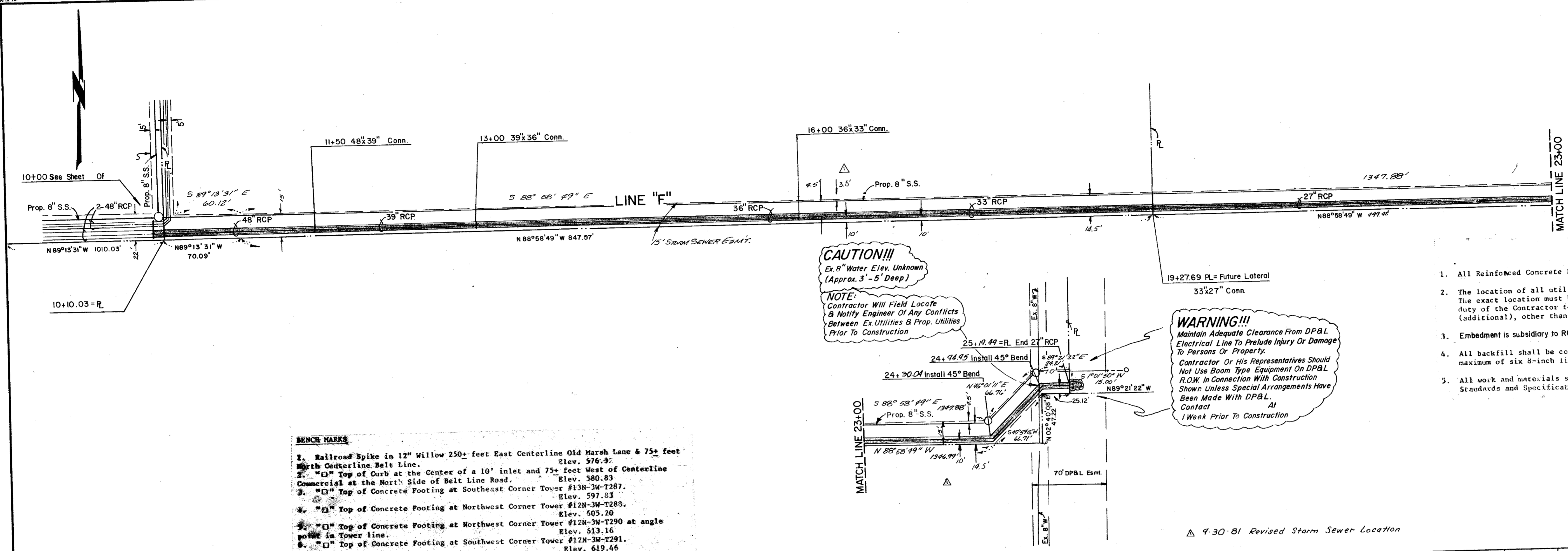
**STORM SEWER PLAN & PROFILE**  
**LINE "F"**

**CITY OF ADDISON, TEXAS**  
RAYMOND L. GOODSON JR. INC., ENGINEERS

DESIGN	DRAWN	DATE	SCALE	NOTES	FILE NO.
R.L.G.	INC.	JULY-81	1"=50' H 1"=5' V	R.L.G. INC.	80-95



DATE	
BY	
REVISIONS	
NO.	
DATE	
BY	
REVISIONS	
NO.	
DATE	
BY	
REVISIONS	
NO.	



**CAUTION!!!**  
 Ex. 8" Water Elev. Unknown (Approx. 3'-5" Deep)

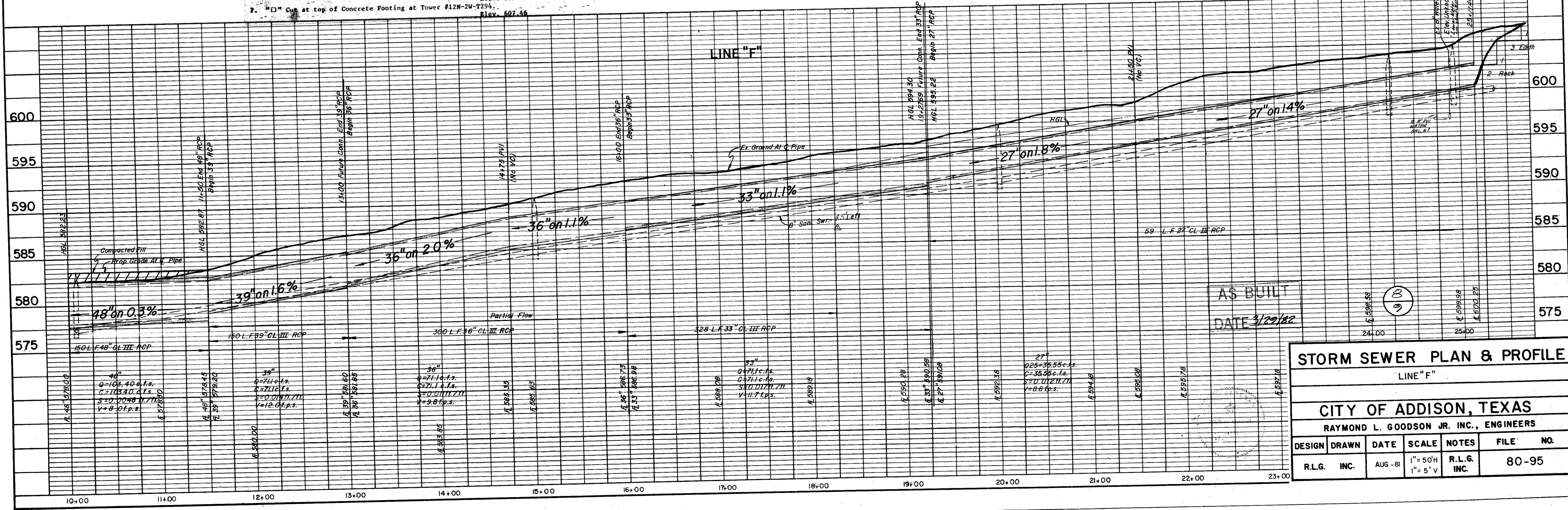
**NOTE:**  
 Contractor Will Field Locate & Notify Engineer Of Any Conflicts Between Ex. Utilities & Prop. Utilities Prior To Construction

**WARNING!!!**  
 Maintain Adequate Clearance From DPBL Electrical Line To Preclude Injury Or Damage To Persons Or Property. Contractor Or His Representatives Should Not Use Boom Type Equipment On DPBL R.O.W. In Connection With Construction Shown. Unless Special Arrangements Have Been Made With DPBL. Contact At 1 Week Prior To Construction

- GENERAL NOTES
1. All Reinforced Concrete Pipe shall be Class III unless otherwise noted.
  2. The location of all utilities are taken from existing public records. The exact location must be determined by the Contractor. It is the duty of the Contractor to ascertain whether any other facilities (additional), other than those on the plans are present.
  3. Embedment is subsidiary to RCP.
  4. All backfill shall be compacted to 90% Standard Proctor Density in a maximum of six 8-inch lifts.
  5. All work and materials shall be in accordance with the City of Addison Standards and Specifications and to contract specifications and documents.

- BENCH MARKS**
1. Railroad Spike in 12" Willow 250+ feet East Centerline Old Marsh Lane & 75+ feet North Centerline Belt Line. Elev. 576.92
  2. "□" Top of Curb at the Center of a 10' inlet and 75+ feet West of Centerline Commercial at the West Side of Belt Line Road. Elev. 580.83
  3. "□" Top of Concrete Footing at Southeast Corner Tower #13N-3W-T287. Elev. 597.33
  4. "□" Top of Concrete Footing at Northwest Corner Tower #12N-3W-T288. Elev. 595.20
  5. "□" Top of Concrete Footing at Northwest Corner Tower #12N-3W-T290 at angle point in Tower line. Elev. 613.16
  6. "□" Top of Concrete Footing at Southwest Corner Tower #12N-3W-T291. Elev. 619.46
  7. "□" Cut at top of Concrete Footing at Tower #12N-2W-T294. Elev. 607.46

DATE	
BY	
REVISIONS	
NO.	
DATE	
BY	
REVISIONS	
NO.	
DATE	
BY	
REVISIONS	
NO.	



AS BUILT  
 DATE 3/29/82

**STORM SEWER PLAN & PROFILE**  
 LINE "F"

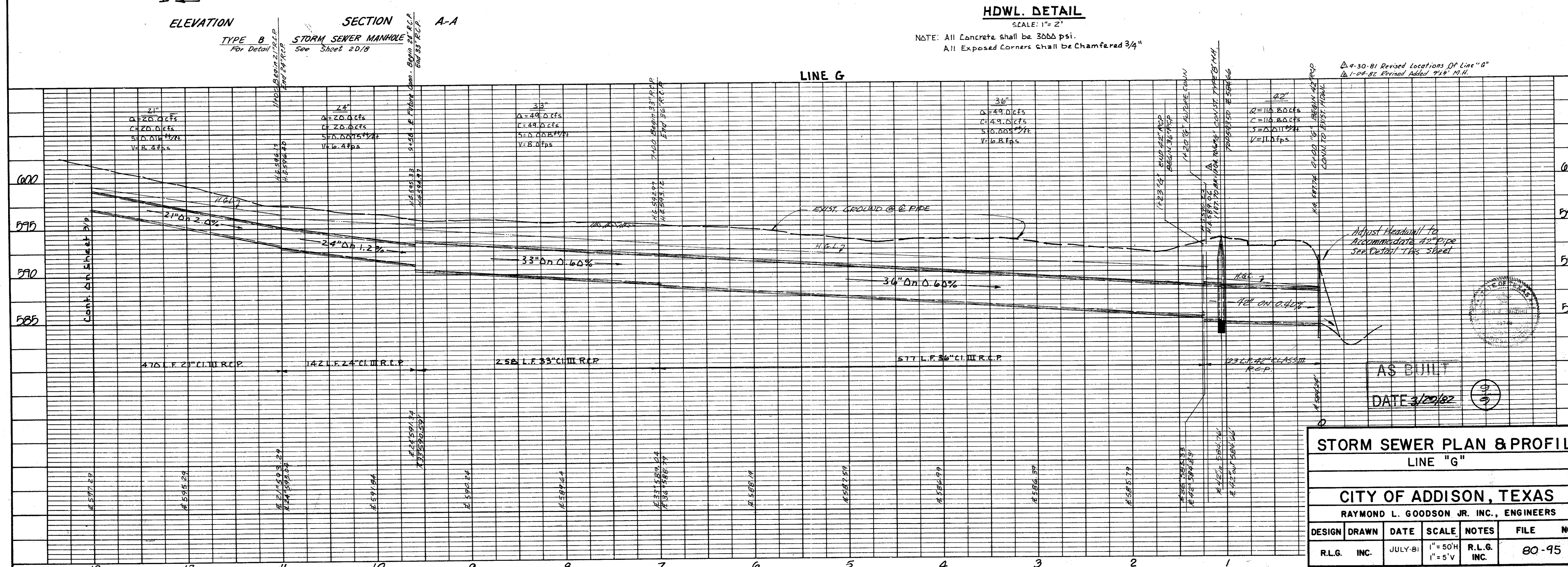
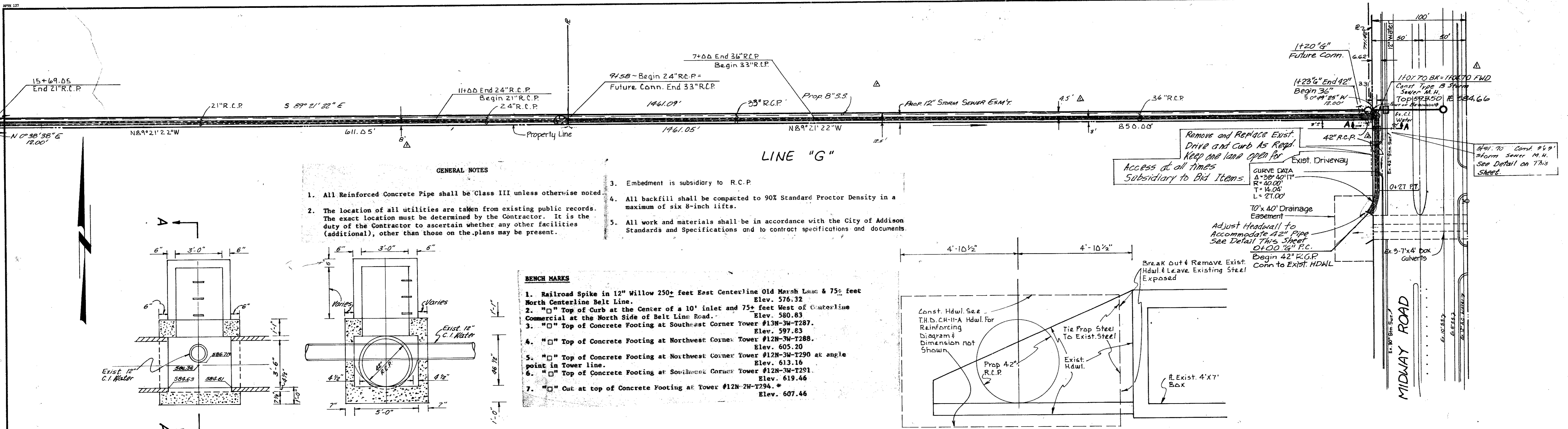
**CITY OF ADDISON, TEXAS**  
 RAYMOND L. GOODSON JR. INC., ENGINEERS

DESIGN	DRAWN	DATE	SCALE	NOTES	FILE NO.
R.L.G.	INC.	AUG-81	1" = 50'H 1" = 5' V	R.L.G. INC.	80-95



DATE	
BY	
REVISION	
NO.	
PLAN	
NOTE BOOK	
NO.	

DATE	
BY	
REVISION	
NO.	
PROFILE	
NOTE BOOK	
NO.	



**STORM SEWER PLAN & PROFILE**  
LINE "G"

**CITY OF ADDISON, TEXAS**  
RAYMOND L. GOODSON JR. INC., ENGINEERS

DESIGN	DRAWN	DATE	SCALE	NOTES	FILE	NO.
R.L.G.	INC.	JULY-01	1" = 50'H 1" = 5'V	R.L.G. INC.	80-95	