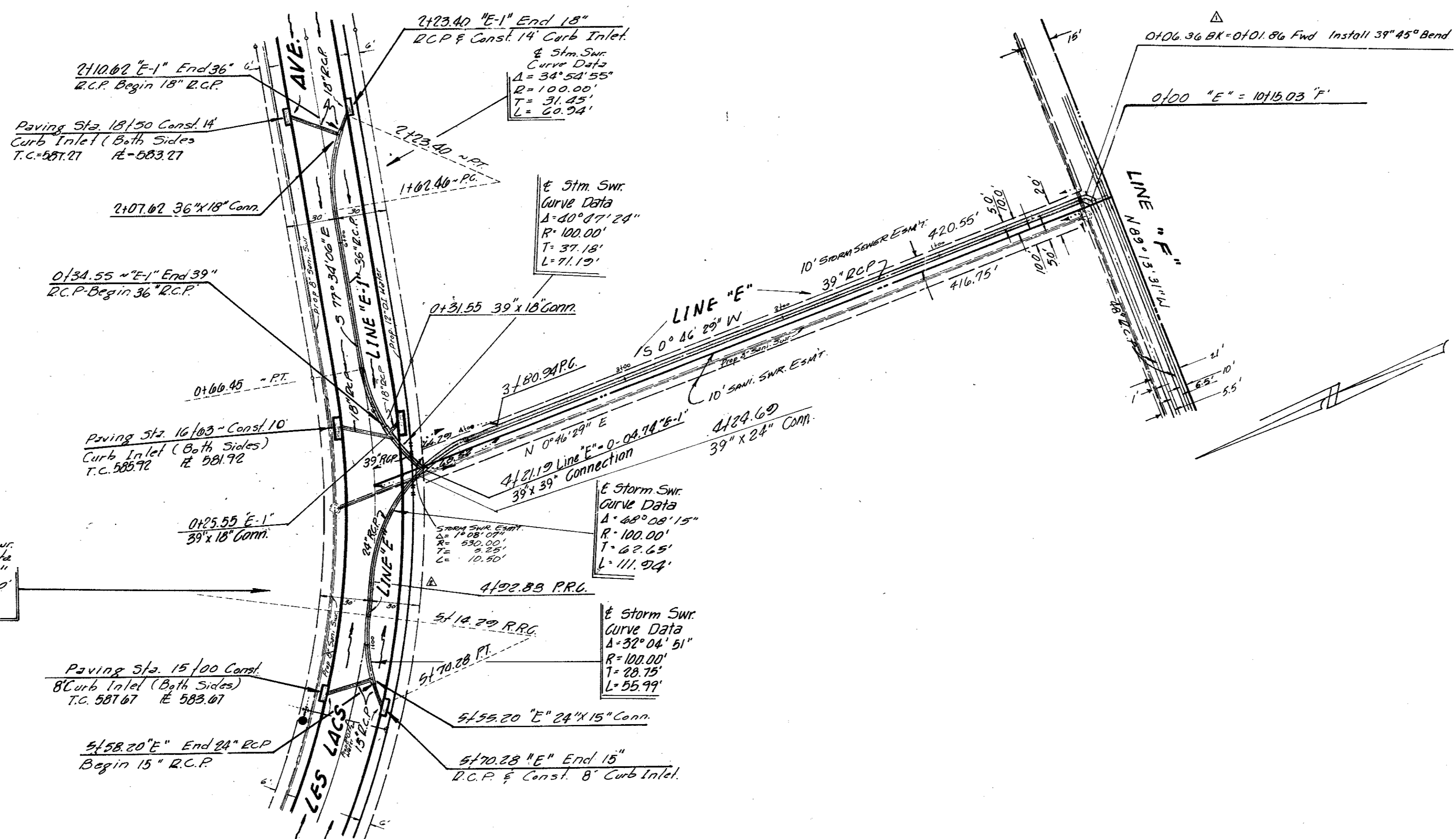


DATE	
BY	
CHECKED	
APPROVED	
DESIGNED	
DRAWN	
DATE	
BY	
CHECKED	
APPROVED	
DESIGNED	
DRAWN	

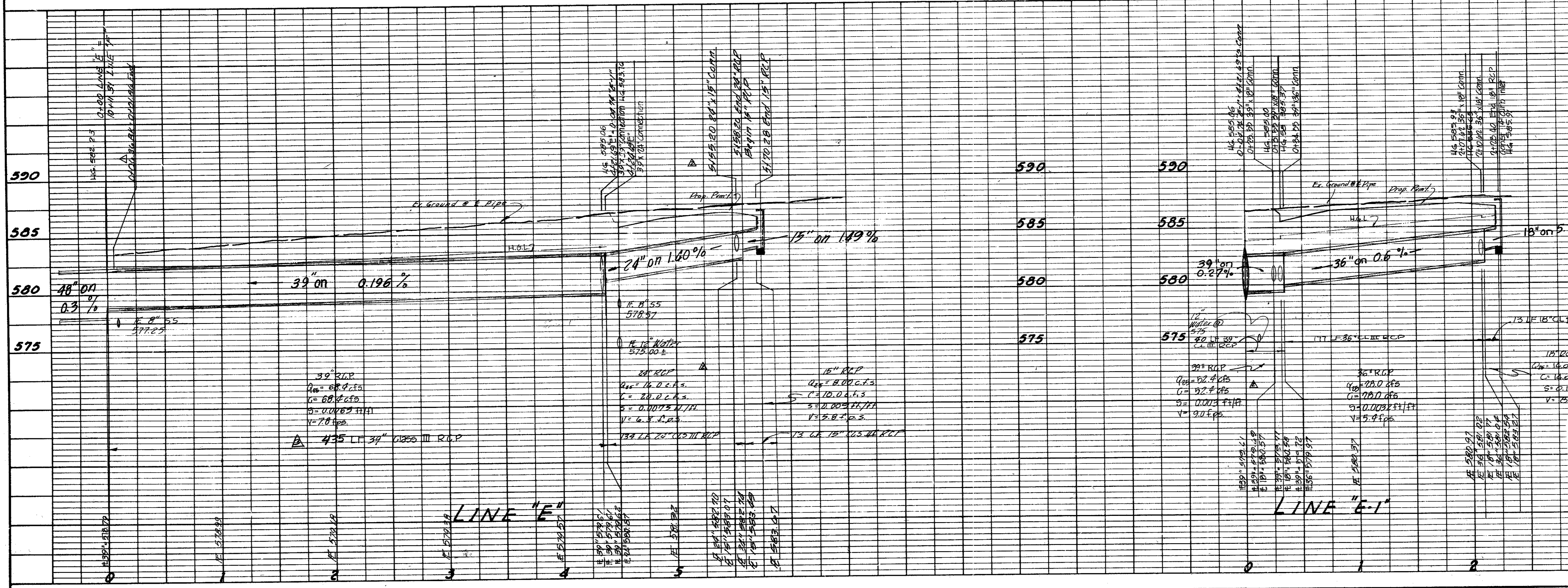
DATE	
BY	
CHECKED	
APPROVED	
DESIGNED	
DRAWN	



- GENERAL NOTES**
1. All Reinforced Concrete Pipe shall be Class III unless otherwise noted.
 2. The location of all utilities are taken from existing public records. The exact location must be determined by the Contractor. It is the duty of the Contractor to ascertain whether any other facilities (additional), other than those on the plans may be present.
 3. Embedment is subsidiary to R.C.P.
 4. All backfill shall be compacted to 90% Standard Proctor Density in a maximum of six 8-inch lifts.
 5. All work and materials shall be in accordance with the City of Addison Standards and Specifications and to contract specifications and documents.

- BENCH MARKS**
1. Railroad Spike in 12" Willow 250+ feet East Centerline Old Marsh Lane & 75+ feet North Centerline Belt Line. Elev. 576.32
 2. "□" Top of Curb at the Center of a 10' inlet and 75+ feet West of Centerline Commercial at the North Side of Belt Line Road. Elev. 580.83
 3. "□" Top of Concrete Footing at Southeast Corner Tower #13N-3W-T287. Elev. 597.83
 4. "□" Top of Concrete Footing at Northwest Corner Tower #12N-3W-T288. Elev. 605.20
 5. "□" Top of Concrete Footing at Northwest Corner Tower #12N-3W-T290 at angle point in Tower line. Elev. 613.16
 6. "□" Top of Concrete Footing at Southwest Corner Tower #12N-3W-T291. Elev. 619.46
 7. "□" Cut at top of Concrete Footing at Tower #12N-2W-T294. Elev. 607.46

△ 9-30-81 Revised Stations △ 12/08/81 REVISED QUANTITY LINE E
 △ 12/05/81 Revised Line E-1



AS BUILT
 DATE 3/29/82

STORM SEWER PLAN & PROFILE						
LINE "E" & LINE "E-1"						
CITY OF ADDISON, TEXAS						
RAYMOND L. GOODSON JR., INC., ENGINEERS						
DESIGN	DRAWN	DATE	SCALE	NOTES	FILE	NO.
R.L.G.	INC.	JULY-81	1"=50' 1"=5' V	R.L.G. INC.	80-45	