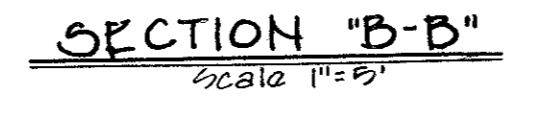
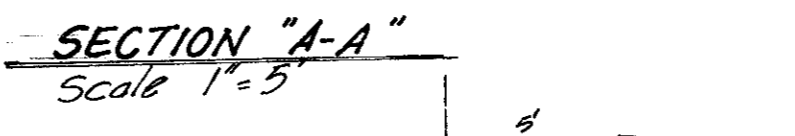
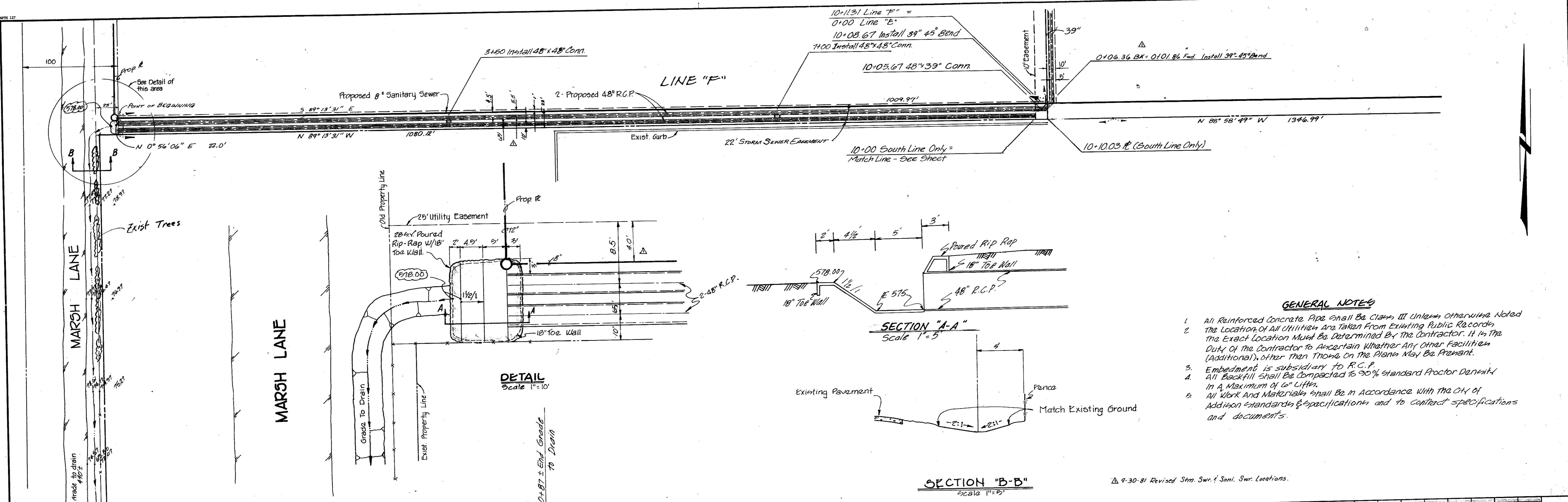


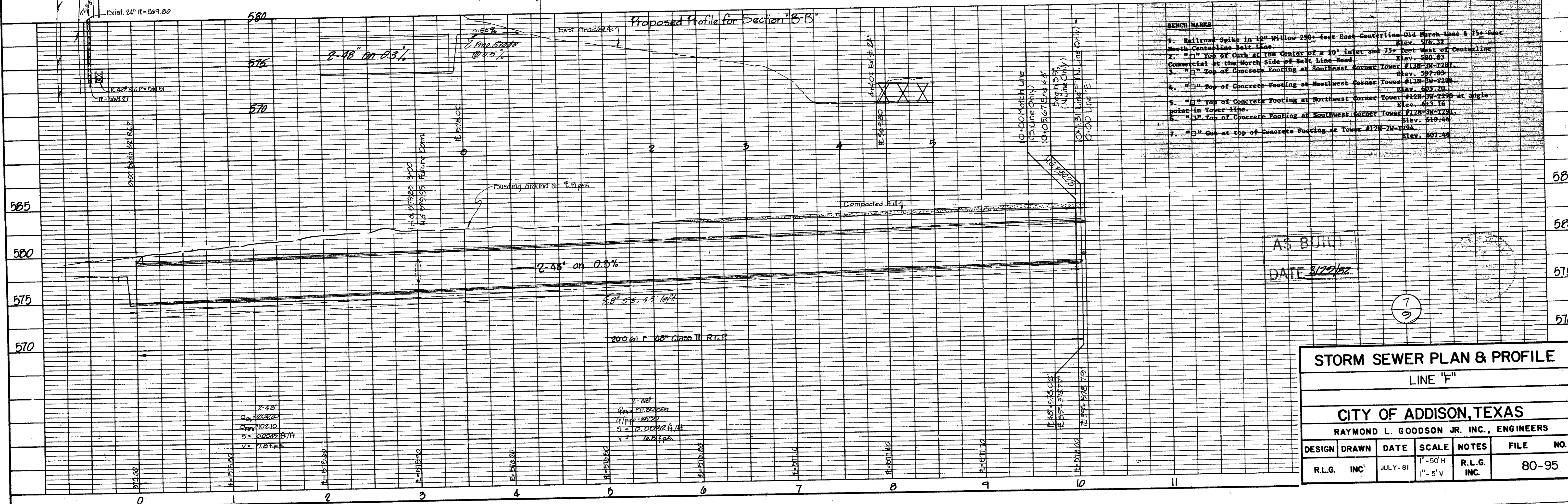
PLAN	DATE
BY	
CHECKED	
DATE	
NO.	

PROFILE	DATE
BY	
CHECKED	
DATE	
NO.	



- GENERAL NOTES**
- All Reinforced Concrete Pipe shall be Class III Unless Otherwise Noted
 - The Location of All Utilities are Taken From Existing Public Records. The Exact Location Must Be Determined By The Contractor. It is The Duty of the Contractor to Ascertain Whether Any Other Facilities (Additional), other than Those On The Plans May Be Present.
 - Embedment is subsidiary to R.C.P.
 - All Backfill shall be compacted to 95% standard Proctor Density in a Maximum of 6" Lifts.
 - All Work And Materials shall be in Accordance with The City of Addison standards & specifications and to contract specifications and documents.

Δ 9-30-81 Revised Str. Swr. & Sani. Swr. Locations.



BENCH MARKS

1. Railroad Spike in 12" Willow 250+ feet East Centerline Old Marsh Lane & 75+ feet North Centerline Belt Lane	Elev. 576.37
2. " " " Top of Curb at the Center of a 10' Inlet and 75+ feet West of Centerline Commercial at the North Side of Belt Lane Road	Elev. 580.83
3. " " " Top of Concrete Footing at Southeast Corner Tower #12N-3M-1287	Elev. 597.83
4. " " " Top of Concrete Footing at Northwest Corner Tower #12N-3M-1288	Elev. 585.23
5. " " " Top of Concrete Footing at Northwest Corner Tower #12N-3M-1290 at angle point in tower line	Elev. 613.16
6. " " " Top of Concrete Footing at Southwest Corner Tower #12N-3M-1281	Elev. 619.46
7. " " " Cut at top of Concrete Footing at Tower #12N-2M-1294	Elev. 607.46

AS BUILT
DATE 3/22/82

1
9

STORM SEWER PLAN & PROFILE					
LINE 'F'					
CITY OF ADDISON, TEXAS					
RAYMOND L. GOODSON JR. INC., ENGINEERS					
DESIGN	DRAWN	DATE	SCALE	NOTES	FILE NO.
R.L.G.	INC.	JULY-81	1"=50'H 1"=5'V	R.L.G. INC.	80-95