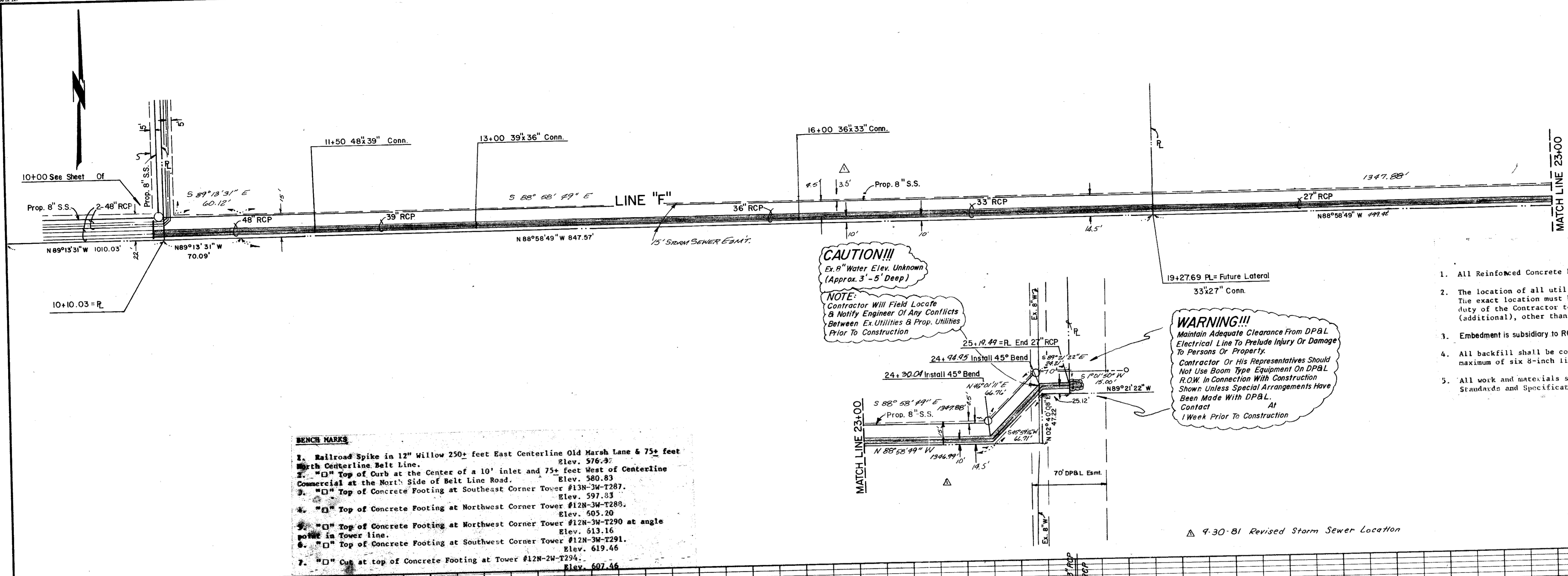


DATE	
BY	
REVISIONS	
NO.	
DATE	
BY	
REVISIONS	
NO.	
DATE	
BY	
REVISIONS	
NO.	



CAUTION!!!
 Ex. 8" Water Elev. Unknown
 (Approx. 3'-5" Deep)

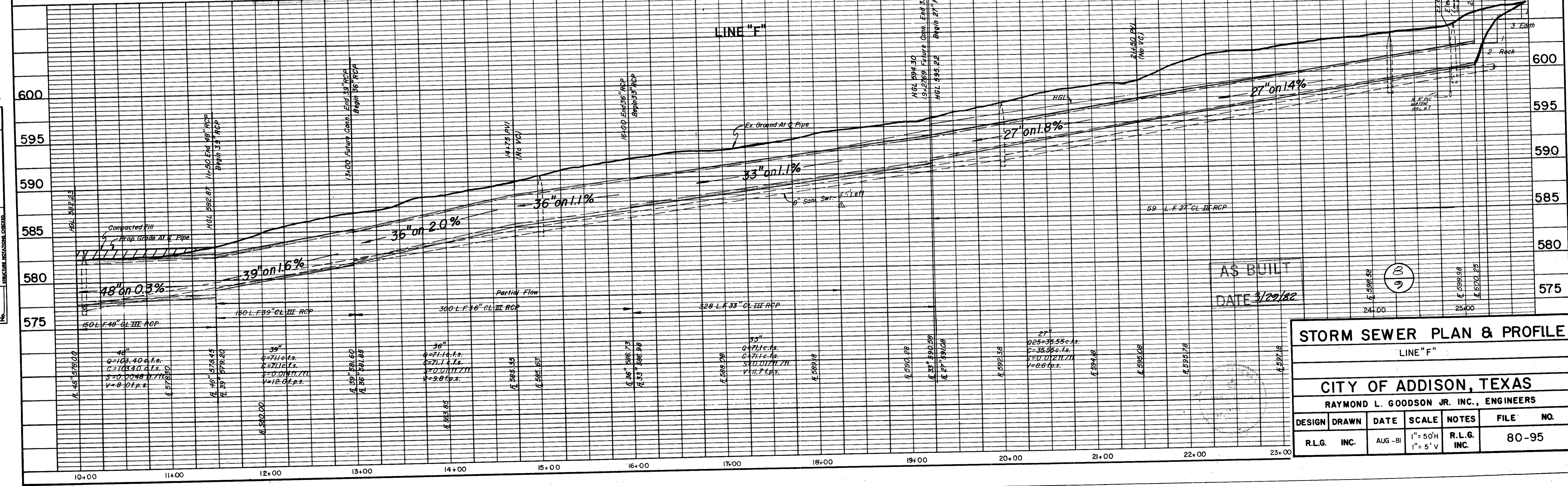
NOTE:
 Contractor Will Field Locate
 & Notify Engineer Of Any Conflicts
 Between Ex. Utilities & Prop. Utilities
 Prior To Construction

WARNING!!!
 Maintain Adequate Clearance From DPBL
 Electrical Line To Preclude Injury Or Damage
 To Persons Or Property.
 Contractor Or His Representatives Should
 Not Use Boom Type Equipment On DPBL
 R.O.W. In Connection With Construction
 Shown. Unless Special Arrangements Have
 Been Made With DPBL.
 Contact At
 1 Week Prior To Construction

- BENCH MARKS**
1. Railroad Spike in 12" Willow 250+ feet East Centerline Old Marsh Lane & 75+ feet North Centerline Belt Line. Elev. 576.92
 2. "□" Top of Curb at the Center of a 10' inlet and 75+ feet West of Centerline Commercial at the West Side of Belt Line Road. Elev. 580.83
 3. "□" Top of Concrete Footing at Southeast Corner Tower #13N-3W-T287. Elev. 597.33
 4. "□" Top of Concrete Footing at Northwest Corner Tower #12N-3W-T288. Elev. 595.20
 5. "□" Top of Concrete Footing at Northwest Corner Tower #12N-3W-T290 at angle point in Tower line. Elev. 613.16
 6. "□" Top of Concrete Footing at Southwest Corner Tower #12N-3W-T291. Elev. 619.46
 7. "□" Cut at top of Concrete Footing at Tower #12N-2W-T294. Elev. 607.46

- GENERAL NOTES**
1. All Reinforced Concrete Pipe shall be Class III unless otherwise noted.
 2. The location of all utilities are taken from existing public records. The exact location must be determined by the Contractor. It is the duty of the Contractor to ascertain whether any other facilities (additional), other than those on the plans are present.
 3. Embedment is subsidiary to RCP.
 4. All backfill shall be compacted to 90% Standard Proctor Density in a maximum of six 8-inch lifts.
 5. All work and materials shall be in accordance with the City of Addison Standards and Specifications and to contract specifications and documents.

DATE	
BY	
REVISIONS	
NO.	
DATE	
BY	
REVISIONS	
NO.	



AS BUILT
 DATE 3/29/82

STORM SEWER PLAN & PROFILE
 LINE "F"

CITY OF ADDISON, TEXAS
 RAYMOND L. GOODSON JR. INC., ENGINEERS

DESIGN	DRAWN	DATE	SCALE	NOTES	FILE NO.
R.L.G.	INC.	AUG-81	1" = 50'H 1" = 5' V	R.L.G. INC.	80-95