

- All water mains shall be PVC Class 200 water pipe.
- All water mains shall have a minimum cover below finished grades as follows: 6" & 8" - 48", 12" - 60", or as required to clear other utilities.
- The location of all utilities are taken from existing public records. The exact location must be determined by the Contractor. It is the duty of the contractor to ascertain whether any other facilities (additional), other than those on the plans may be present.
- All utility trenches under proposed paving shall be backfilled and compacted to 90% Standard Proctor Density.
- All manholes, cleanouts, valve boxes, fire hydrants, etc., must be adjusted to proper line and grade by the Contractor after placing of permanent paving.
- All work and materials shall be in accordance with the City of Addison Standard Specifications.
- Contractor shall be responsible for providing "as-built" plans to the Engineer showing the location of sewer service by distance to the lot lines.

NOTE: Contractor will field locate & notify Engineer of any conflicts between ex. utilities & prop. utilities prior to construction!!!

NOTE: Contractor will field locate & notify Engineer of any conflicts between ex. utilities & prop. utilities prior to construction!!!

BELTLINE

ROAD

BELTWAY DRIVE

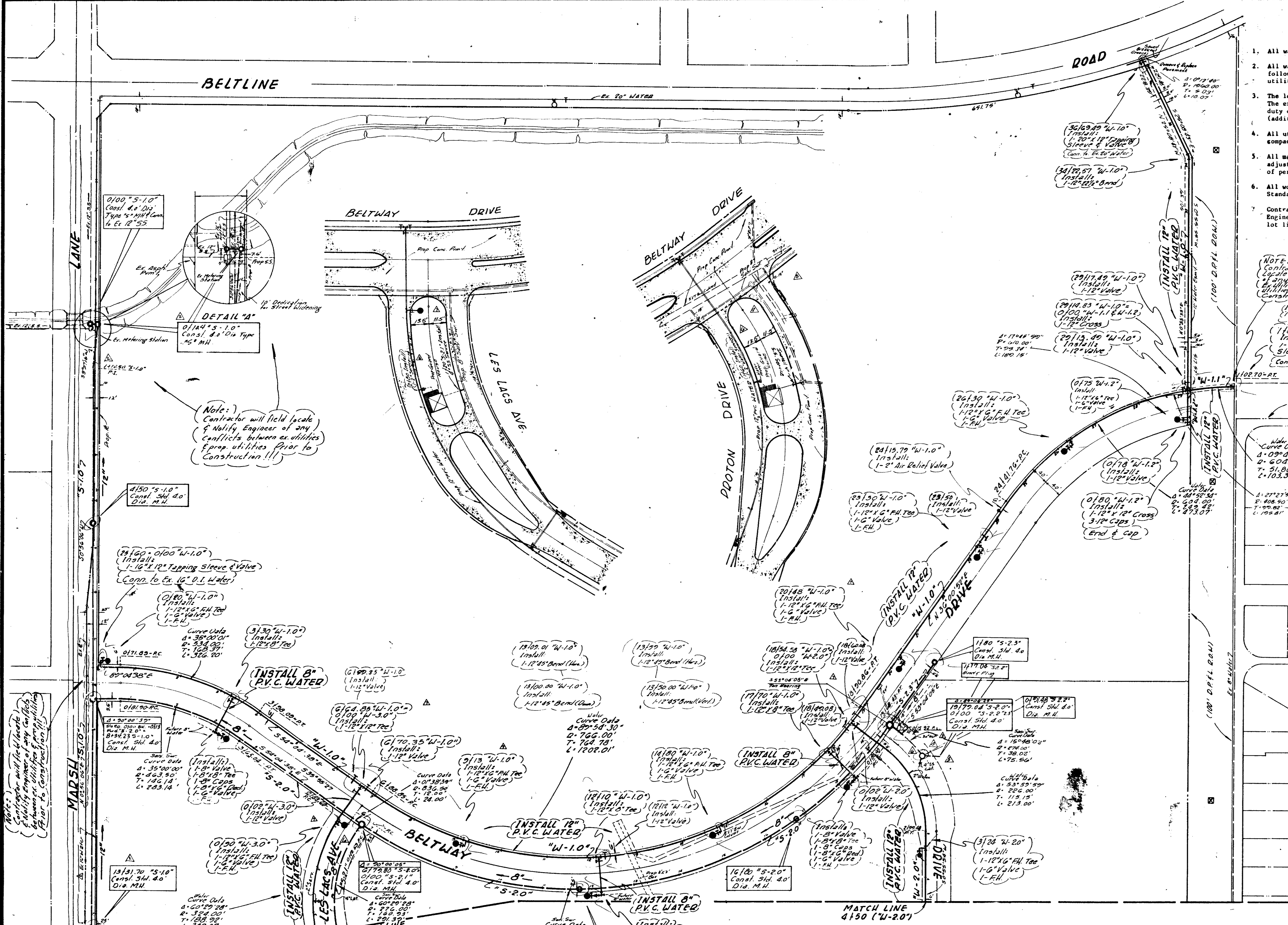
BELTWAY DRIVE

PROTON DRIVE

LES LACS AVE.

DETAIL "A"

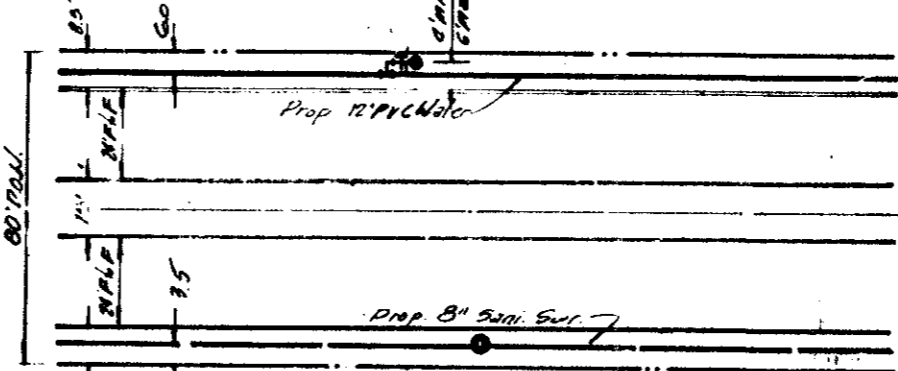
Note: Contractor will field locate & notify Engineer of any conflicts between ex. utilities & prop. utilities prior to construction!!!



NOTE: Contractor will field locate & notify Engineer of any conflicts between ex. utilities & prop. utilities prior to construction!!!

MATCH LINE 1410 (5-10)

TYPICAL UTILITY LOCATION DETAIL (100' D.P.L. No. Scale)



TYPICAL UTILITY LOCATION DETAIL (100' D.P.L. No. Scale)

- Revised Station & Curve Data Line 5-20" 5-21" 5-23"
- 9/17/81 Revised alignment and stations Sanitary Sur. Line 5-10" and Revised location exist 16" water on Marsh Lane
- 10/20/81 Added Sanitary Sewer Curve Data "5-2"
- 11/20/81 Revised Line "5-2" & "6" Lateral
- 12/29/81
- 12/10/81 Revised Guard House Utilities
- 3/20/82 Revised As Per As-Built

WATER & SANITARY SEWER PLAN

RAYMOND L. GOODSON JR., INC., CONSULTING ENGINEERS

CITY OF ADDISON, TEXAS

DESIGN	DRAWN	DATE	SCALE	NOTE	FILE NO.
Raymond L. Goodson			1" = 100'	R.L.G.	



3/20/82