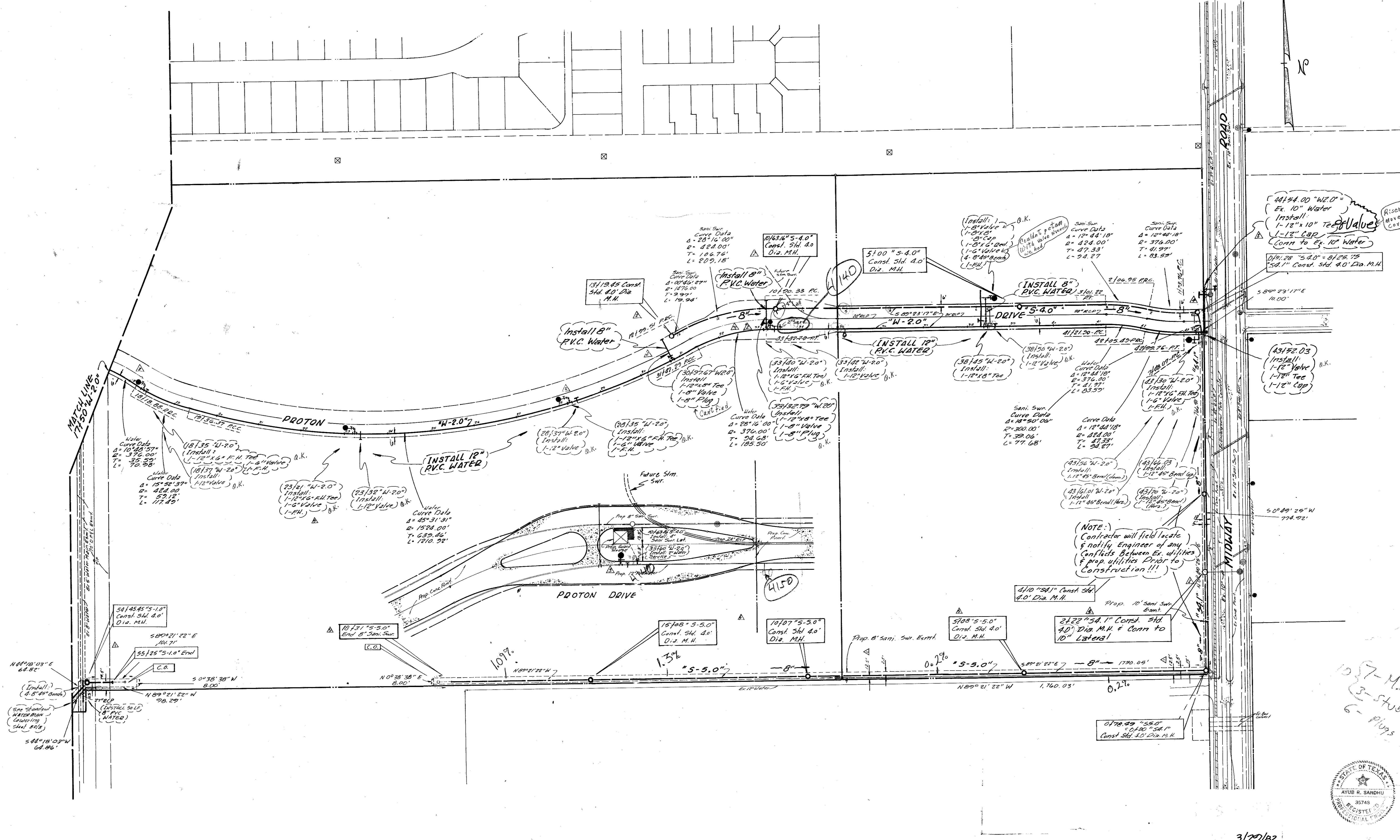
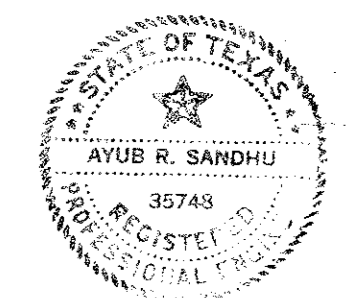


10



NOTE:  
Contractor will field locate & notify Engineer of any conflicts between Ex. utilities & prop. utilities prior to construction!!!

1057-M.U.  
3-Stub Valves  
6-plugs



3/27/02

3/9

- 9-30-01 Revised Location "S-5.0" (310)
- 11-23-01 Revised FH Stationing 35 & 26/36
- Added 8" Service 30157.676 33132.779
- Deleted C.O. Sta. 13410 "S4.0"
- Add M.H. 13412.45
- Added Line "S4.1"
- 12/10/01 Revised Guard House Utilities
- 2/10/02 Revised Changed Water Line "W2.0"
- Added M.H. Line "S4.1"
- 3/29/02 Revised As Per As Buills

**WATER & SANITARY SEWER PLAN**

RAYMOND L. GOODSON JR., INC., CONSULTING ENGINEERS

**CITY OF ADDISON, TEXAS**

DESIGN	DRAWN	DATE	SCALE	NOTES	FILE NO.
Raymond L. Goodson			1"=100'	R.L.G.	