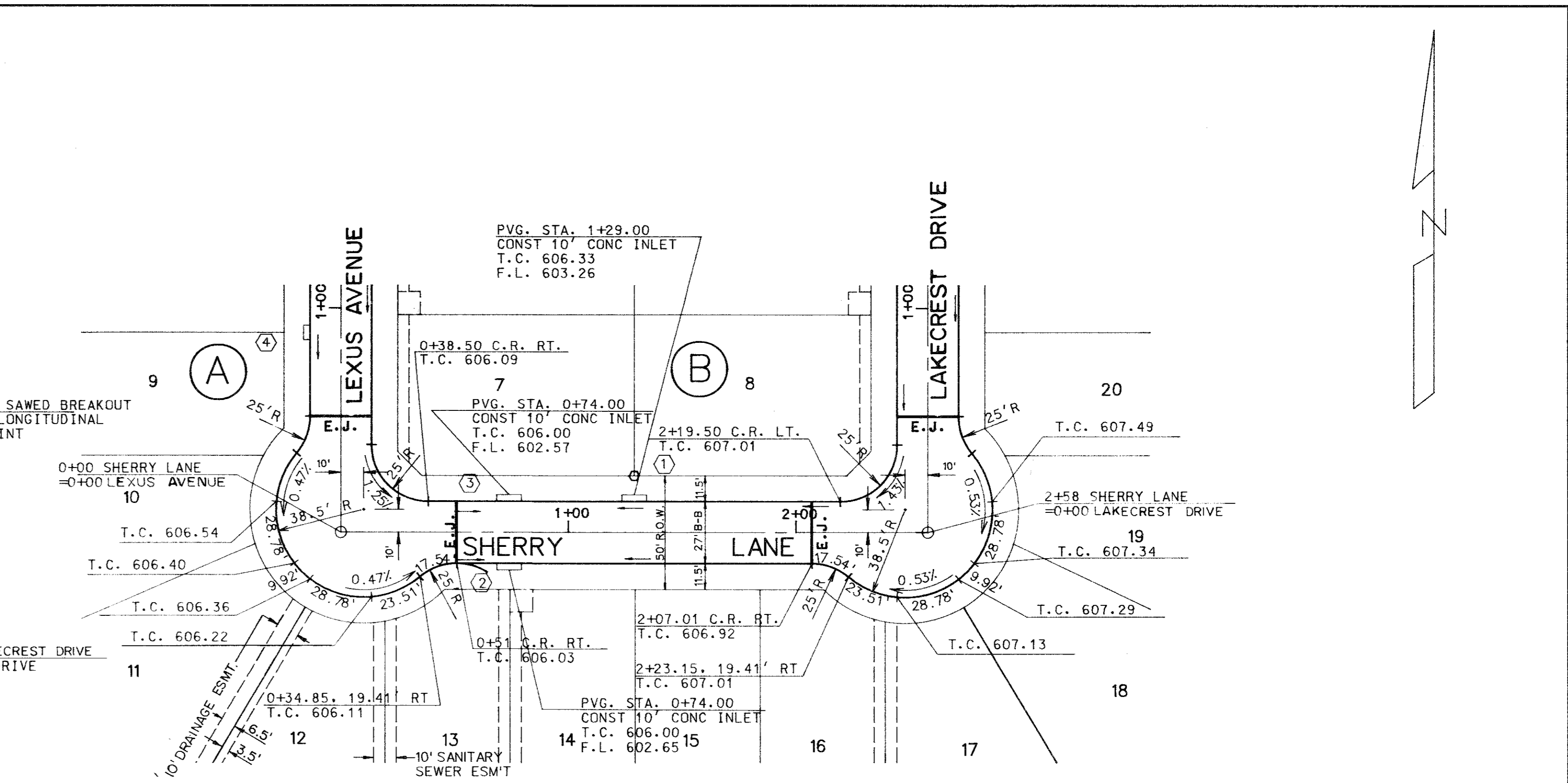
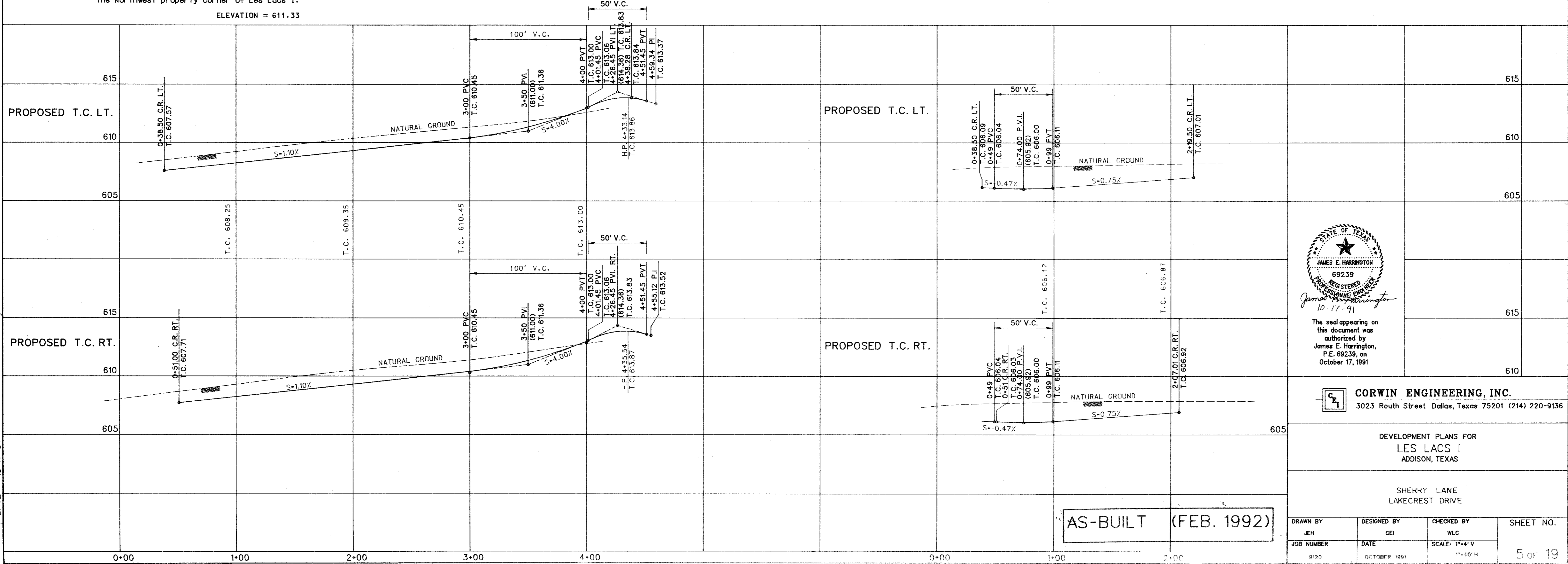
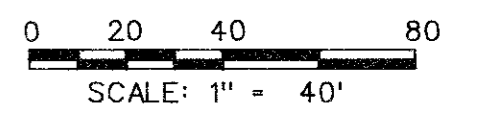


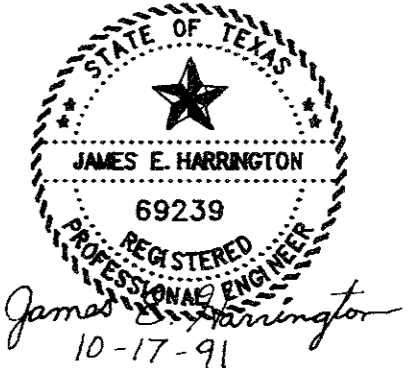
**BENCHMARKS:**  
 "□" on NW corner of transmission tower No. 12N-3W-T290 where transmission line turns 90° to East.  
 ELEVATION = 613.16  
 "□" found on the south top of curb of Proton Drive approximately 30' East of the Northwest property corner of Les Lacs I.  
 ELEVATION = 611.33



**NOTE:**  
 E.J. INDICATES EXPANSION JOINT



VI-PP2  
 FILE: 9120PS1.DGN  
 REF FILE: 9120AL.DGN  
 VIEW: PLAN2  
 DATE: 10-17-91



The seal appearing on this document was authorized by James E. Harrington, P.E. 69239, on October 17, 1991

**CORWIN ENGINEERING, INC.**  
 3023 Routh Street Dallas, Texas 75201 (214) 220-9136

DEVELOPMENT PLANS FOR  
 LES LACS I  
 ADDISON, TEXAS

SHERRY LANE  
 LAKECREST DRIVE

AS-BUILT (FEB. 1992)

DRAWN BY JEH	DESIGNED BY CEI	CHECKED BY WLC	SHEET NO. 5 OF 19
JOB NUMBER 9120	DATE OCTOBER 1991	SCALE: 1"=4' V	