

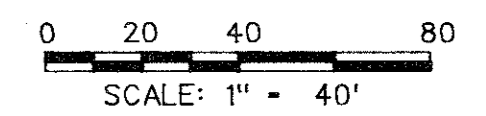
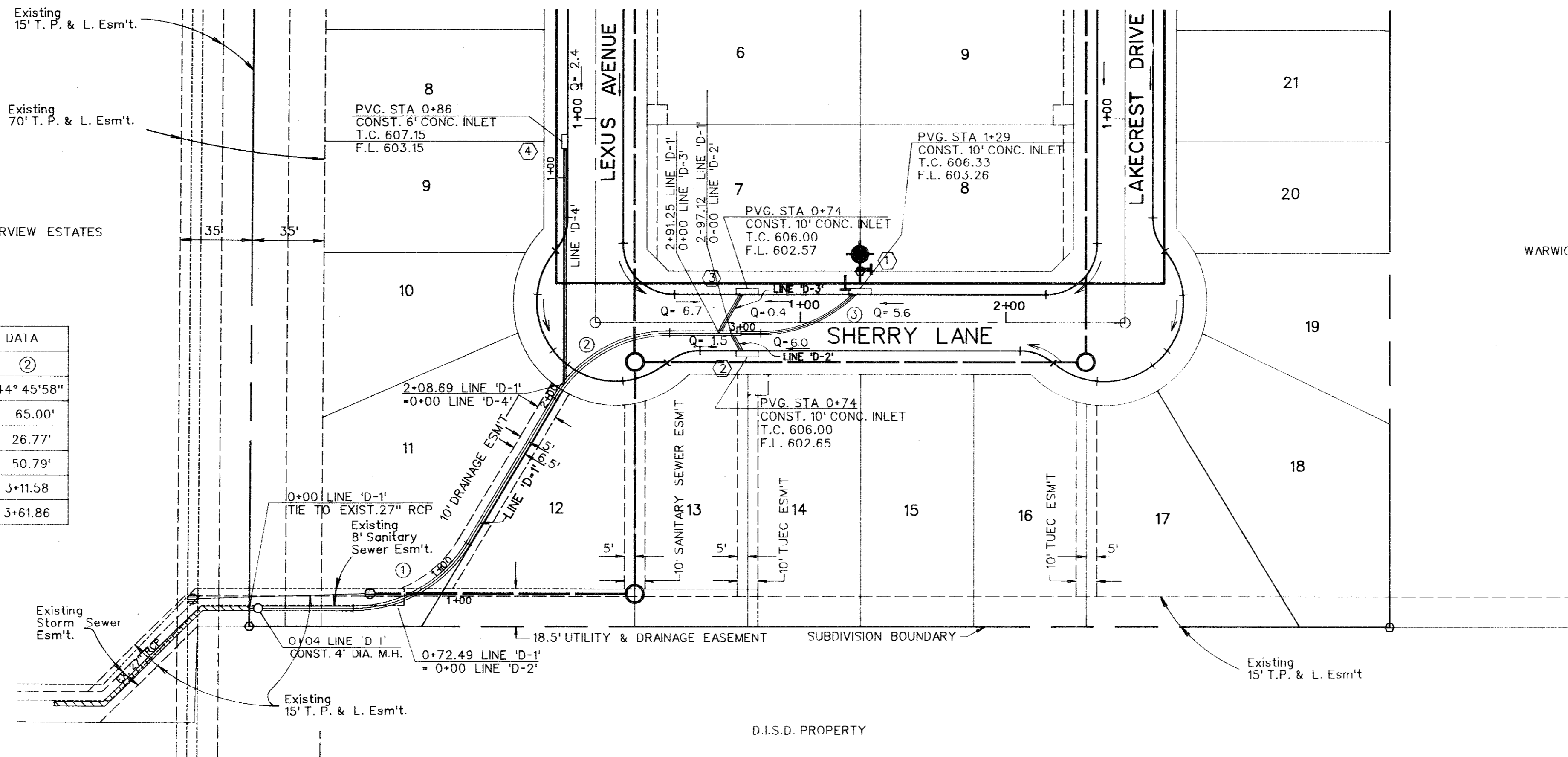
CURVE NO.	SANITARY SEWER CURVE DATA		
	①	②	③
Δ	59° 07' 51"	59° 07' 51"	44° 45' 58"
R	65.00'	65.00'	65.00'
T	36.87'	36.87'	26.77'
L	67.08'	67.08'	50.79'
PC STA	0+50.55	2+00.10	3+11.58
PT STA	1+17.64	2+67.18	3+61.86

BENCHMARKS:
 "□" on NW corner of transmission tower No. 12N-3W-T290 where transmission line turns 90° to East.

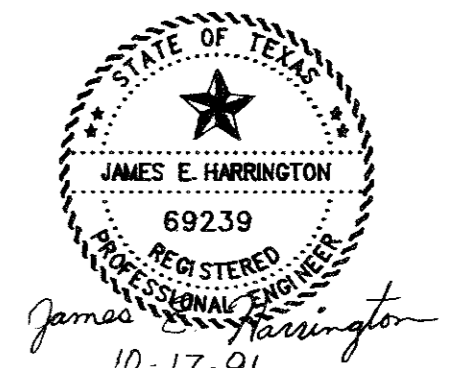
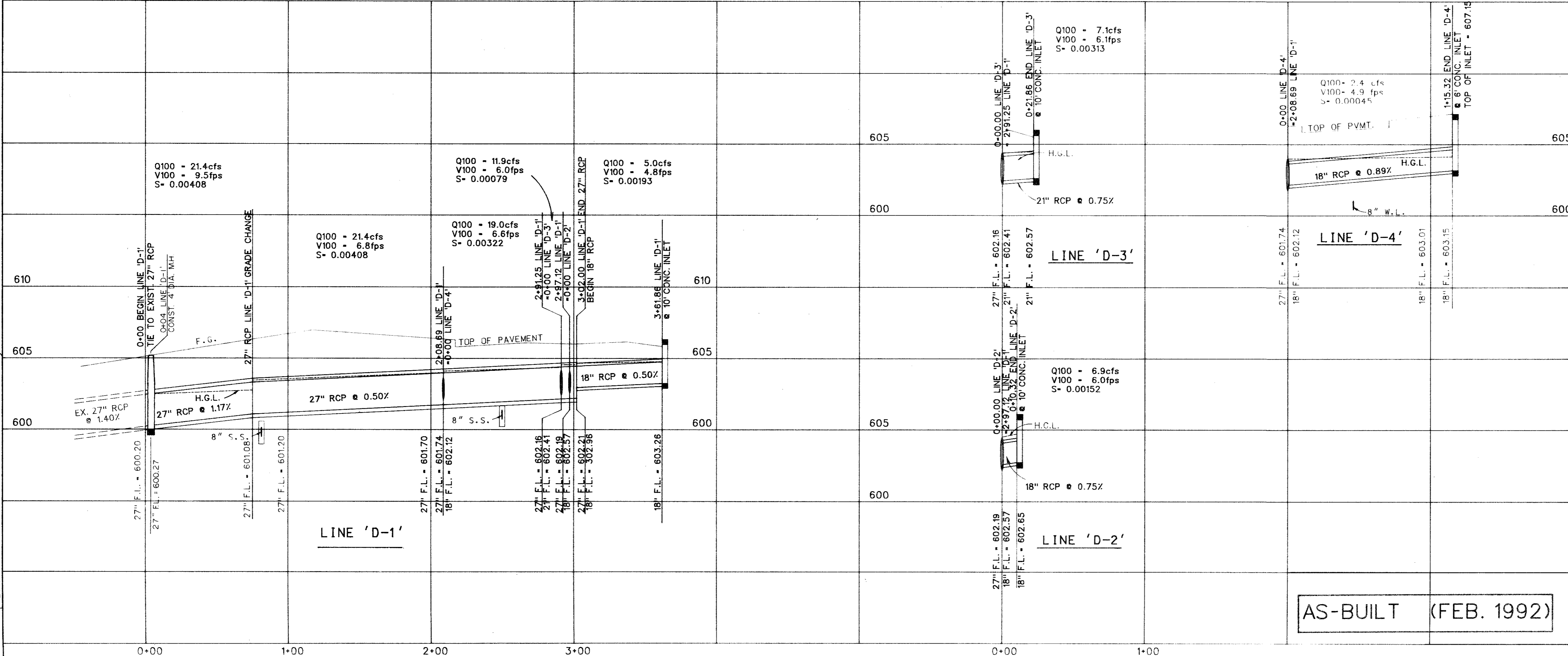
ELEVATION = 613.16

"□" found on the south top of curb of Proton Drive approximately 30' East of the Northwest property corner of Les Lacs I.

ELEVATION = 611.33



FILE: 9120P51.DGN
 REF. FILE: 9120DAL.DGN
 VIEW: SD
 DATE: 10-17-91



The seal appearing on this document was authorized by James E. Harrington, P.E. 69239, on October 17, 1991

CORWIN ENGINEERING, INC.
 3023 Routh Street Dallas, Texas 75201 (214) 220-9136

DEVELOPMENT PLANS FOR
 LES LACS I
 ADDISON, TEXAS

STORM SEWER PLAN & PROFILE

AS-BUILT (FEB. 1992)

DRAWN BY JEH	DESIGNED BY CEI	CHECKED BY WLC	SHEET NO. 8 of 19
JOB NUMBER 9120	DATE OCTOBER 1991	SCALE: 1"=4' V 1"=40' H	