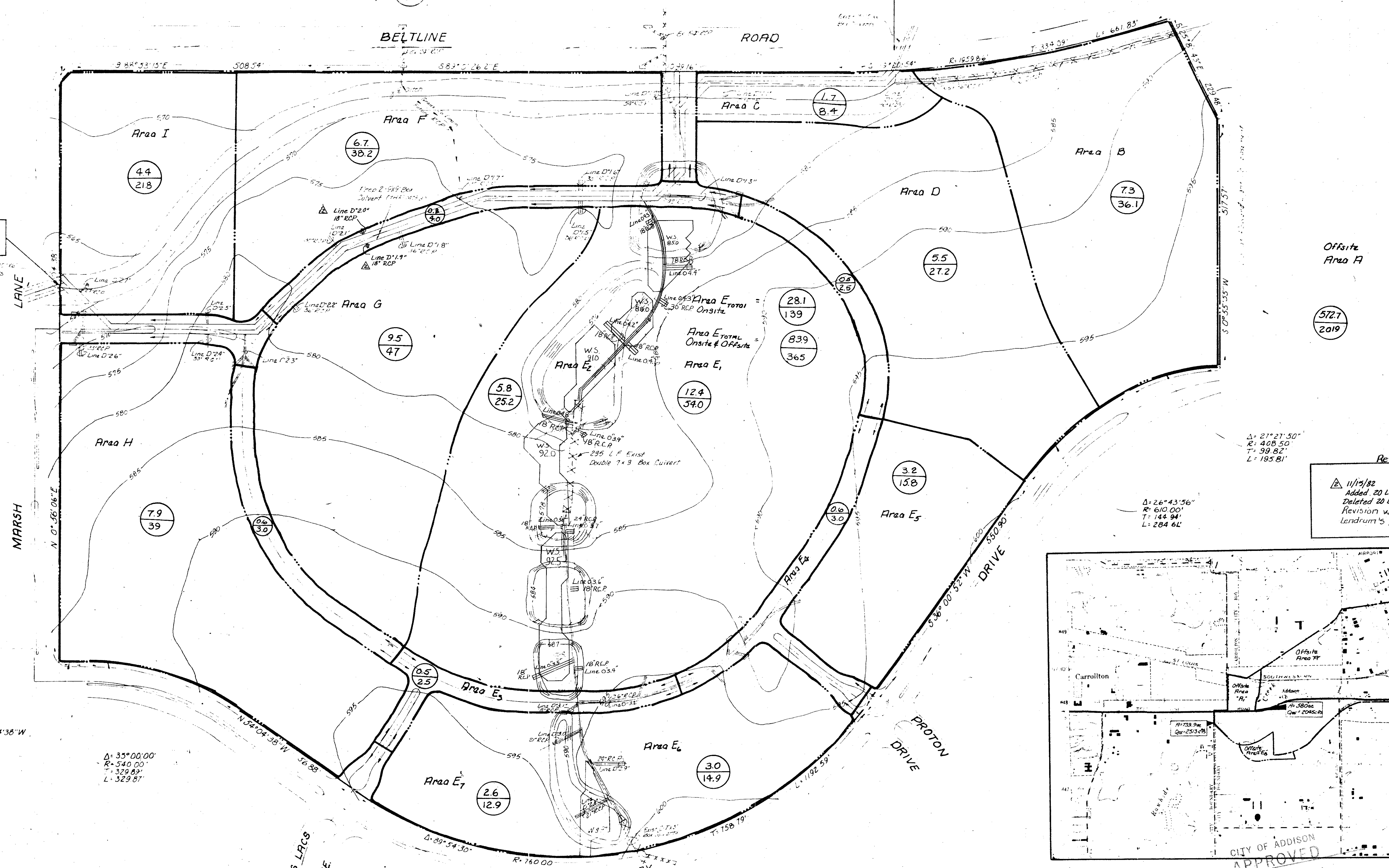


Offsite Area A, 38.6 / 191.0

Offsite Area A

Total Area = 580ac  
Total Qes = 2045ac

Total Area = 139.9ac  
Qes = 2513 cfs



Offsite Area A

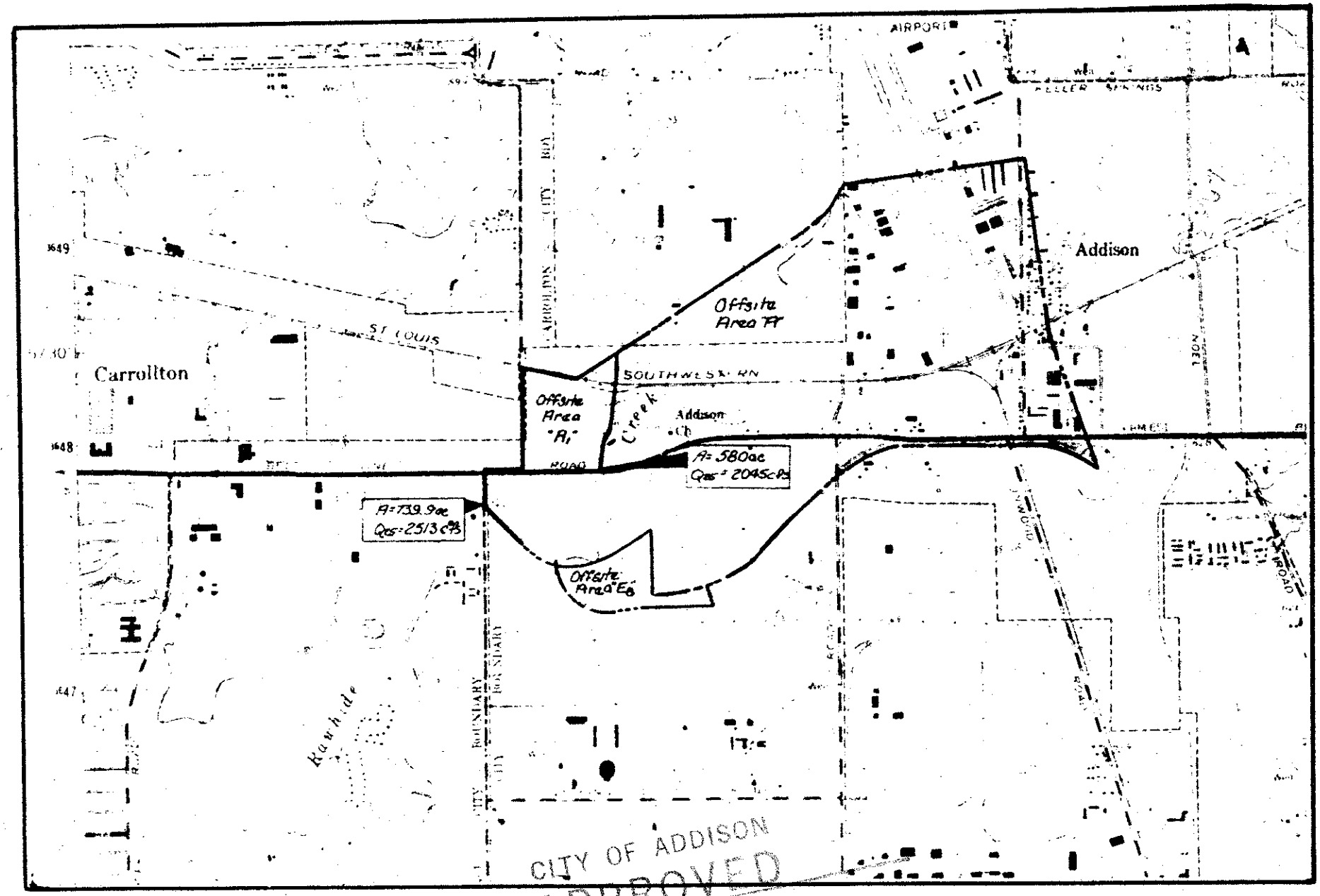
572.7 / 2019

Δ = 21° 21' 30"  
R = 408.50'  
T = 99.82'  
L = 195.81'

**Revisions**

11/15/82  
Added 20 L.F. 18" RCP @ Sta. 7+84'  
Deleted 20 L.F. 18" RCP @ Sta. 5+60'  
Revision was made to concur with Lendrum's prop. grades.

Δ = 26° 43' 56"  
R = 610.00'  
T = 144.94'  
L = 284.61'



CITY OF ADDISON APPROVED

FOR CONSTRUCTION  
**Offsite Drainage Area Map**  
Scale 1" = 2000'

NOTE: CONTRACTOR IS HEREBY INSTRUCTED TO EXERCISE CARE IN MEETING OR EXCEEDING ALL REQUIREMENTS OF BOTH NATIONAL AND LOCAL CODES AND/OR ORDINANCES APPLICABLE TO HIS WORK. APPROVAL OF THESE DRAWINGS SHALL NOT BE CONSTRUED TO RELIEVE RESPONSIBILITY OR IMPLY VARIANCE TO SUCH CODES.

Accepted For Construction By:  
*[Signature]* Date: 2-12-82  
*[Signature]* Date: 3-14-83  
Contractor

Existing Offsite Area E8 55.8 / 243

CONSTRUCTION SET  
2/25/83

CITY OF ADDISON, TEXAS						
RAYMOND L. GOLDSON JR. INC. ENGINEERS						
DESIGN	DRAWN	DATE	SCALE	NOTES	FILE	NO.
		FEB 1983	1"=200'			