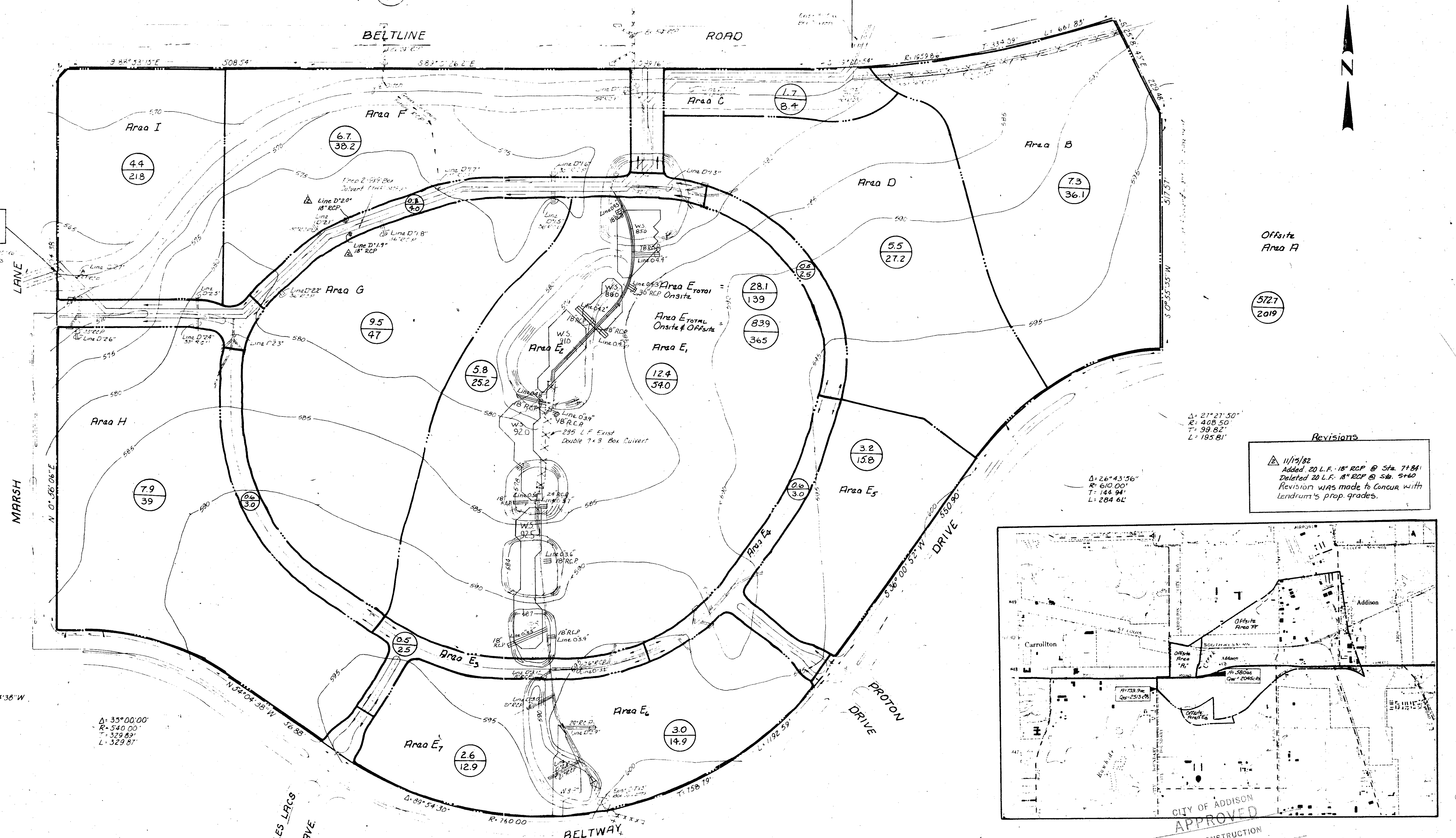


Offsite Area A, 38.6 / 191.0

Offsite Area A

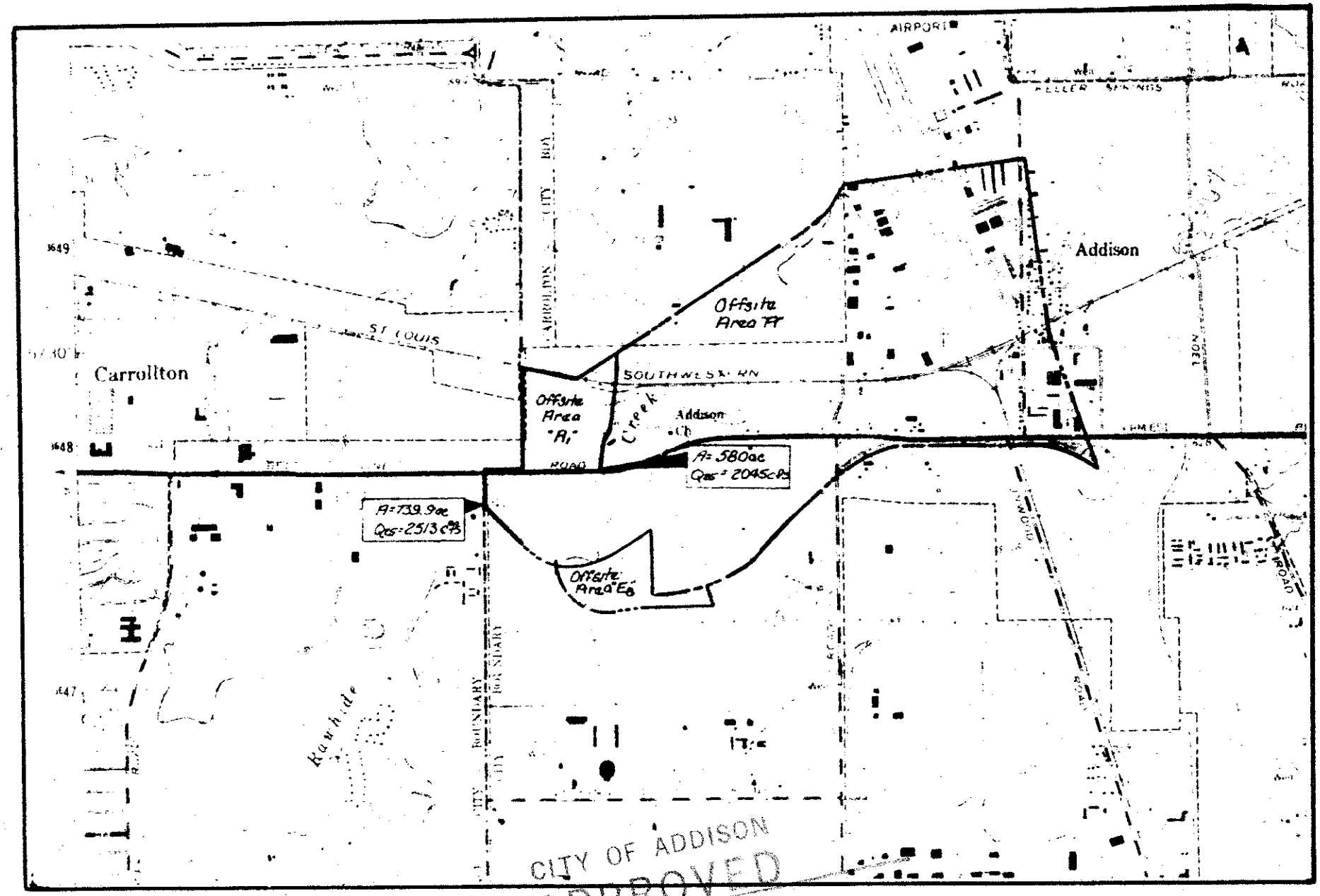
Total Area = 580ac
Total Qes = 2045ac

Total Area = 139.9ac
Qes = 2513 cfs



Revisions

11/13/82
 Added 20 L.F. 18" RCP @ Sta. 7+84'
 Deleted 20 L.F. 18" RCP @ Sta. 5+60'
 Revision was made to concur with Lendrum's prop. grades.



CITY OF ADDISON
 APPROVED

FOR CONSTRUCTION
 Offsite Drainage Area Map
 Scale 1" = 2000'

Accepted For Construction By:
 [Signature] Date: 2-12-82
 [Signature] Date: 3-14-83
 Contractor

Existing Offsite Area E8 55.8 / 243

CONSTRUCTION SET
 2/25/83

CITY OF ADDISON, TEXAS						
RAYMOND L. GOLDSON JR. INC. ENGINEERS						
DESIGN	DRAWN	DATE	SCALE	NOTES	FILE	NO.
RL	RL	FEB 1983	1"=200'	31		

NOTE: CONTRACTOR IS HEREBY INSTRUCTED TO EXERCISE CARE IN MEETING OR EXCEEDING ALL REQUIREMENTS OF BOTH NATIONAL AND LOCAL CODES AND/OR ORDINANCES APPLICABLE TO HIS WORK. APPROVAL OF THESE DEPARTMENTS SHALL NOT IMPLY STRUED TO RELIEVE RESPONSIBILITY OR IMPLY VARIANCE TO SUCH CODES.