

Storm Sewer Design

* Use $C=0.75$ $Q_{25} = 4.35 \times A$

Contributing Line	Contributing Area	Additional Drainage Area (Ac)	Total D.A. (Ac)	Tc (min)	I_{25} (1%/hr)	Q_{25} (cfs)
Existing 2-7x3 Box Culu	E ₀ (Offsite)	55.8	55.8	15	5.8	293
Line D "2.8"	E _{1/2}	1.3	57.1	"	"	298
Line D "2.9"	E _{1/2}	1.5	58.6	"	"	255
Line D "3.0"	E _{1/2}	1.3	59.9	"	"	261
Line D "3.1"	E _{3/2}	0.25	60.15	"	"	262
Line D "3.2"	E _{1/2} , E _s , E _a , E _{1/10} , E _{1/10}	7.7	67.85	"	"	295
Line D "3.3"	E _{3/2}	0.25	68.10	"	"	296
Line D "3.4"	E _{1/10}	1.24	69.34	"	"	302
Line D "3.5"	E _{1/5}	1.16	70.50	"	"	307
Line D "3.6"	E _{1/10}	1.24	71.74	"	"	312
Line D "3.7"	E _{1/10}	1.24	72.98	"	"	317
Line D "3.8"	E _{1/5}	1.16	74.14	"	"	323
Line D "3.9"	E _{1/10}	1.24	75.38	"	"	328
Line D "4.0"	E _{1/5}	1.24	76.62	"	"	333
Line D "4.1" & "4.2"	E _{1/10} , E _{1/5}	2.4	79.02	"	"	344
Line D "4.3"	E _{1/10}	1.24	80.26	"	"	349
Line D "4.4"	E _{1/10} , E _{1/10}	2.48	82.74	"	"	360
Line D "4.5"	E _{1/5}	1.16	83.9	"	"	365

Bench Marks

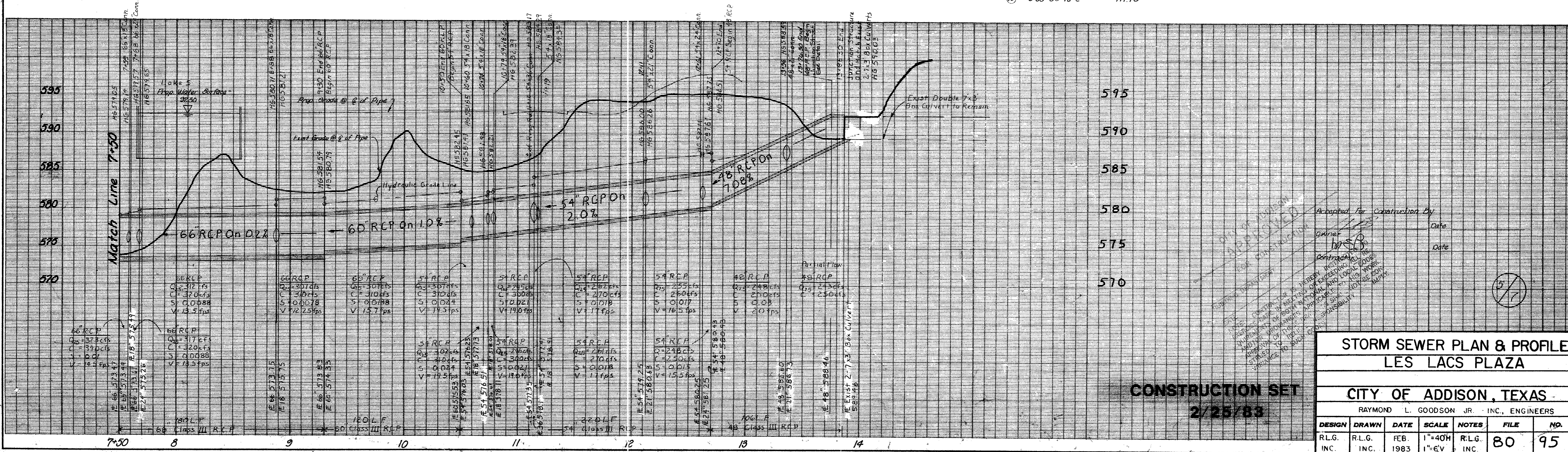
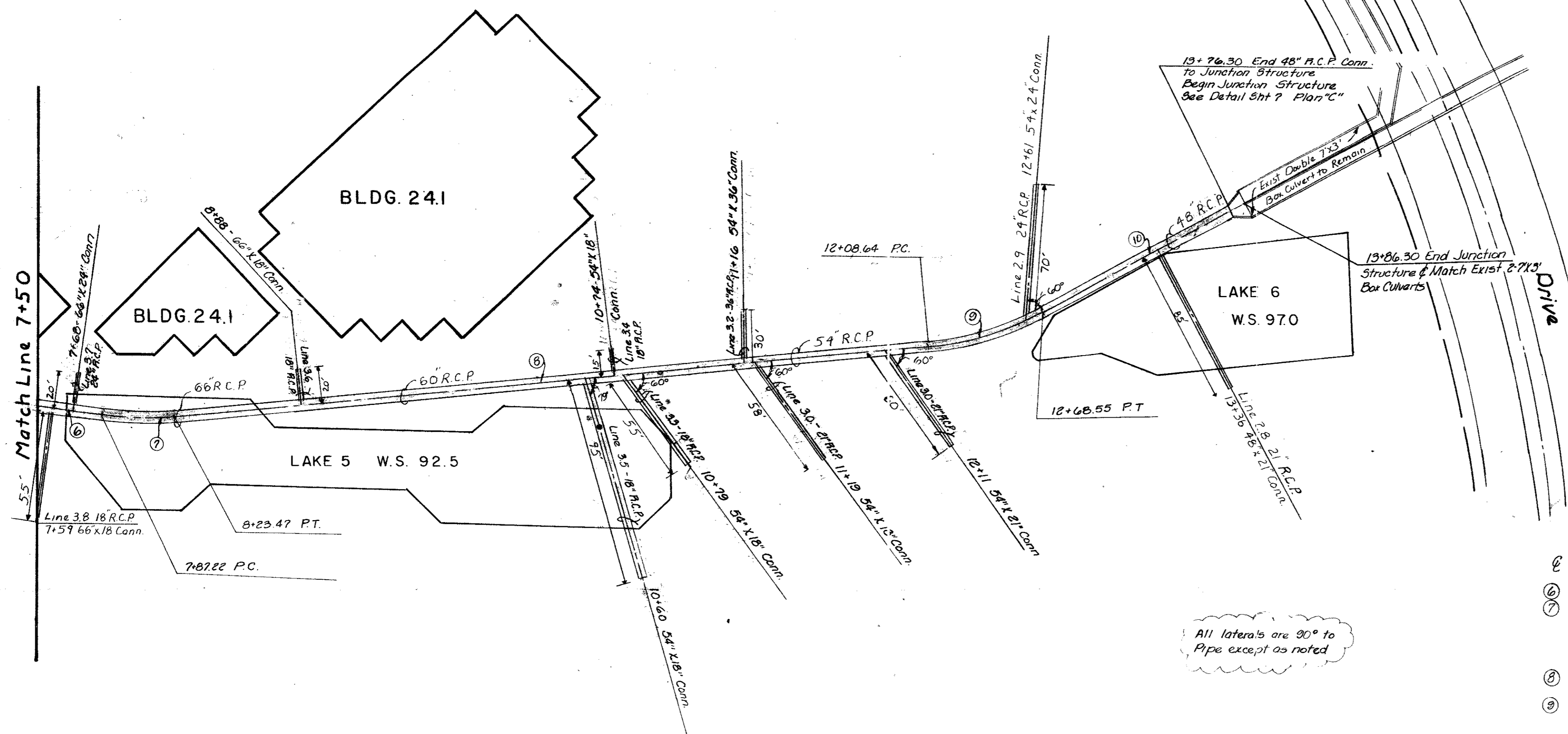
□ Top of Curb at the Center of a 10' Inlet and 75' West of Centerline Commercial at N. Side of Belt Line Road.
Elevation: 580.83

□ Top of Concrete Footing at NW Corner Tower # 12N-3W-T288
Elevation: 605.20

Storm Sewer Data

- ⑥ $307^{\circ}45'01"W$ 53.78'
- ⑦ $\Delta = 13^{\circ}50'40"$
 $A = 150.00'$
 $T = 18.21'$
 $L = 36.25'$
- ⑧ $306^{\circ}05'39"E$ 385.17'
- ⑨ $\Delta = 28^{\circ}53'03"$
 $A = 150.00'$
 $T = 30.36'$
 $L = 39.01'$
- ⑩ $828^{\circ}58'42"E$ 117.25'

All laterals are 90° to Pipe except as noted



Accepted for Construction By
Date
Owner
Date
Contractor
Date

STORM SEWER PLAN & PROFILE
LES LACS PLAZA

CITY OF ADDISON, TEXAS
RAYMOND L. GOODSON JR., INC., ENGINEERS

DESIGN	DRAWN	DATE	SCALE	NOTES	FILE	NO.
R.L.G. INC.	R.L.G. INC.	FEB. 1983	1"=40H 1"=6V	R.L.G. INC.	80	95

CONSTRUCTION SET
2/25/83