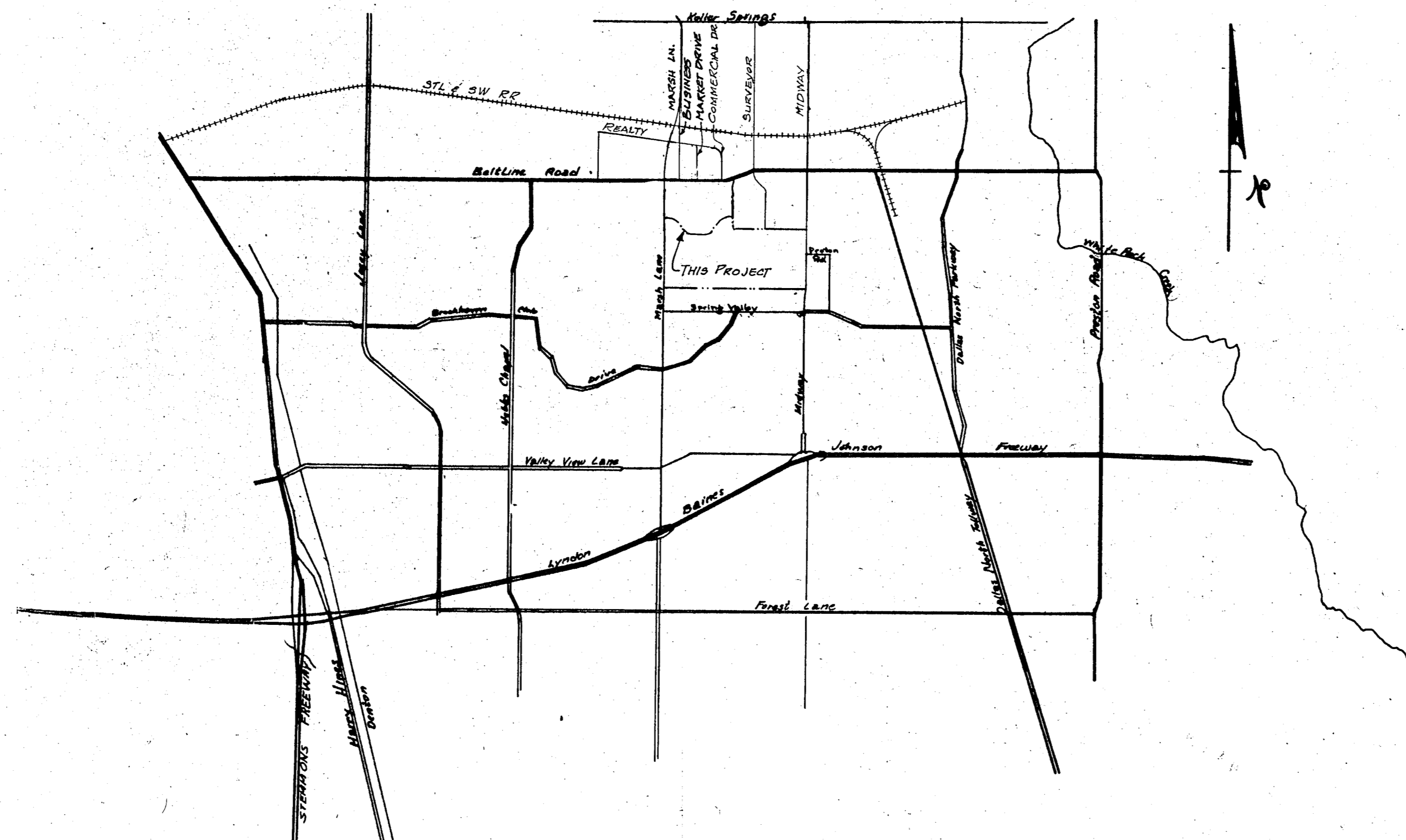


LES LACS PLAZA

for

LES LACS PLAZA JOINT VENTURE



VICINITY MAP

AS BUILT SANITARY SEWER ONLY
DATE 11/23/83

DESIGNED BY

RAYMOND L. GOODSON, JR., INCORPORATED, CONSULTING ENGINEERS
3409 OAK GROVE
528-2200
DALLAS, TEXAS
75204

INDEX

- 1 - COVER SHEET
- 2 - SANITARY SEWER & WATER PLAN
- 3 - SANITARY SEWER PROFILE
- 4 - WATER PROFILE

ACCEPTED:

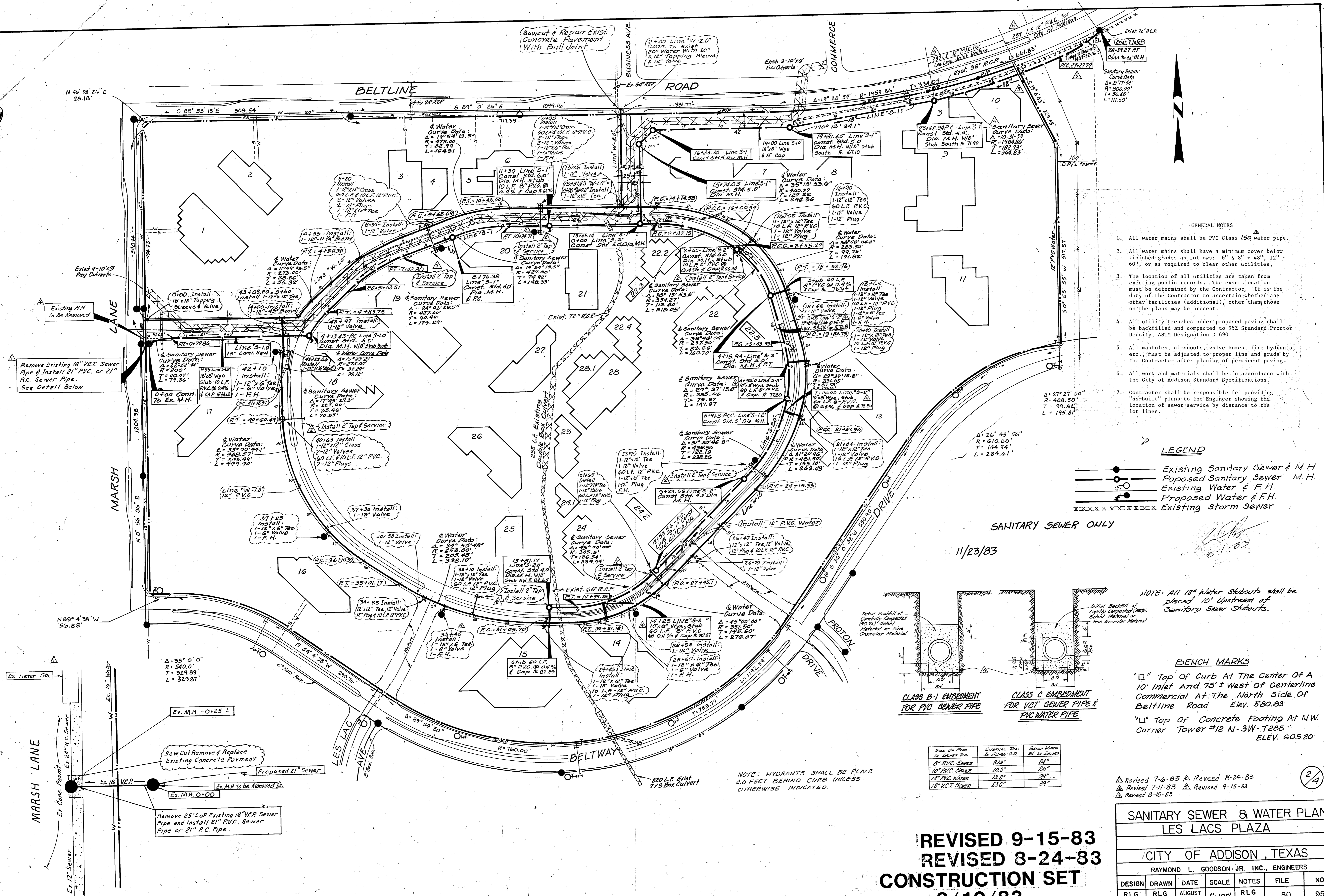
CONTRACTOR
TEX-CON

OWNER

LES LACS PLAZA JOINT VENTURE

REVISED 9-15-83
REVISED 8-24-83
CONSTRUCTION SET
8/10/83

1/4



- GENERAL NOTES
- All water mains shall be PVC Class 150 water pipe.
 - All water mains shall have a minimum cover below finished grade as follows: 6" & 8" - 48", 12" - 60", or as required to clear other utilities.
 - The location of all utilities are taken from existing public records. The exact location must be determined by the Contractor. It is the duty of the Contractor to ascertain whether any other facilities (additional), other than those on the plans may be present.
 - All utility trenches under proposed paving shall be backfilled and compacted to 95% Standard Proctor Density, ASTM Designation D 690.
 - All manholes, cleanouts, valve boxes, fire hydrants, etc., must be adjusted to proper line and grade by the Contractor after placing of permanent paving.
 - All work and materials shall be in accordance with the City of Addison Standard Specifications.
 - Contractor shall be responsible for providing "as-built" plans to the Engineer showing the location of sewer service by distance to the lot lines.

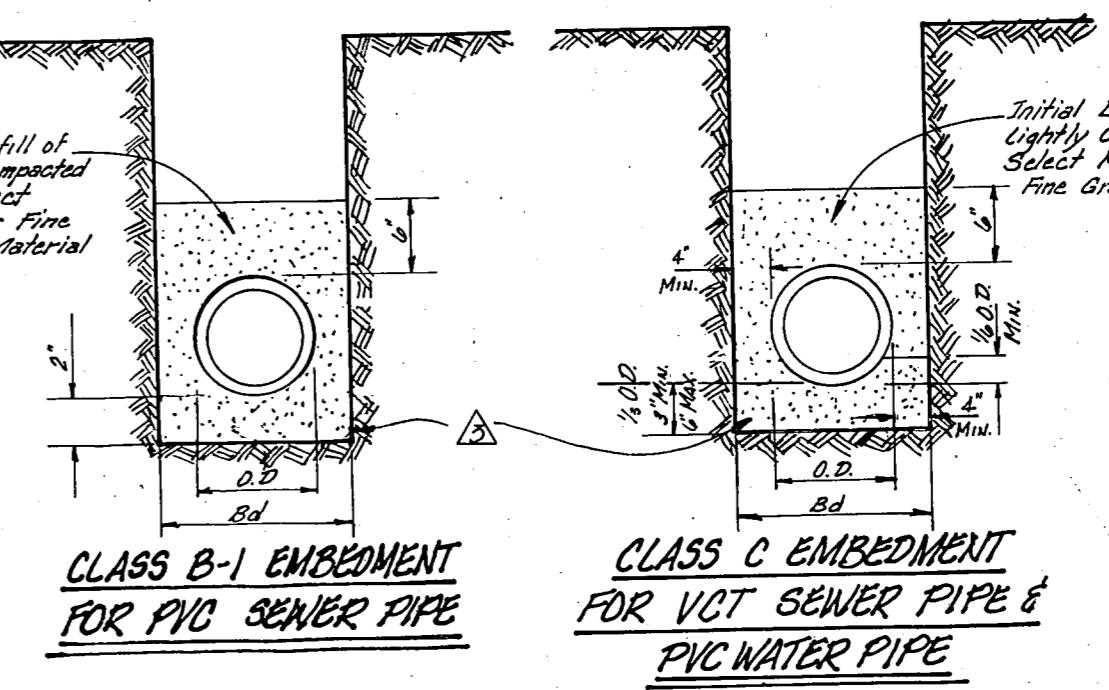
LEGEND

- Existing Sanitary Sewer & M.H.
- Proposed Sanitary Sewer M.H.
- Existing Water & F.H.
- Proposed Water & F.H.
- Existing Storm Sewer

SANITARY SEWER ONLY

11/23/83

NOTE: All 12" Water Stubouts shall be placed 10' Upstream of Sanitary Sewer Stubouts.



BENCH MARKS

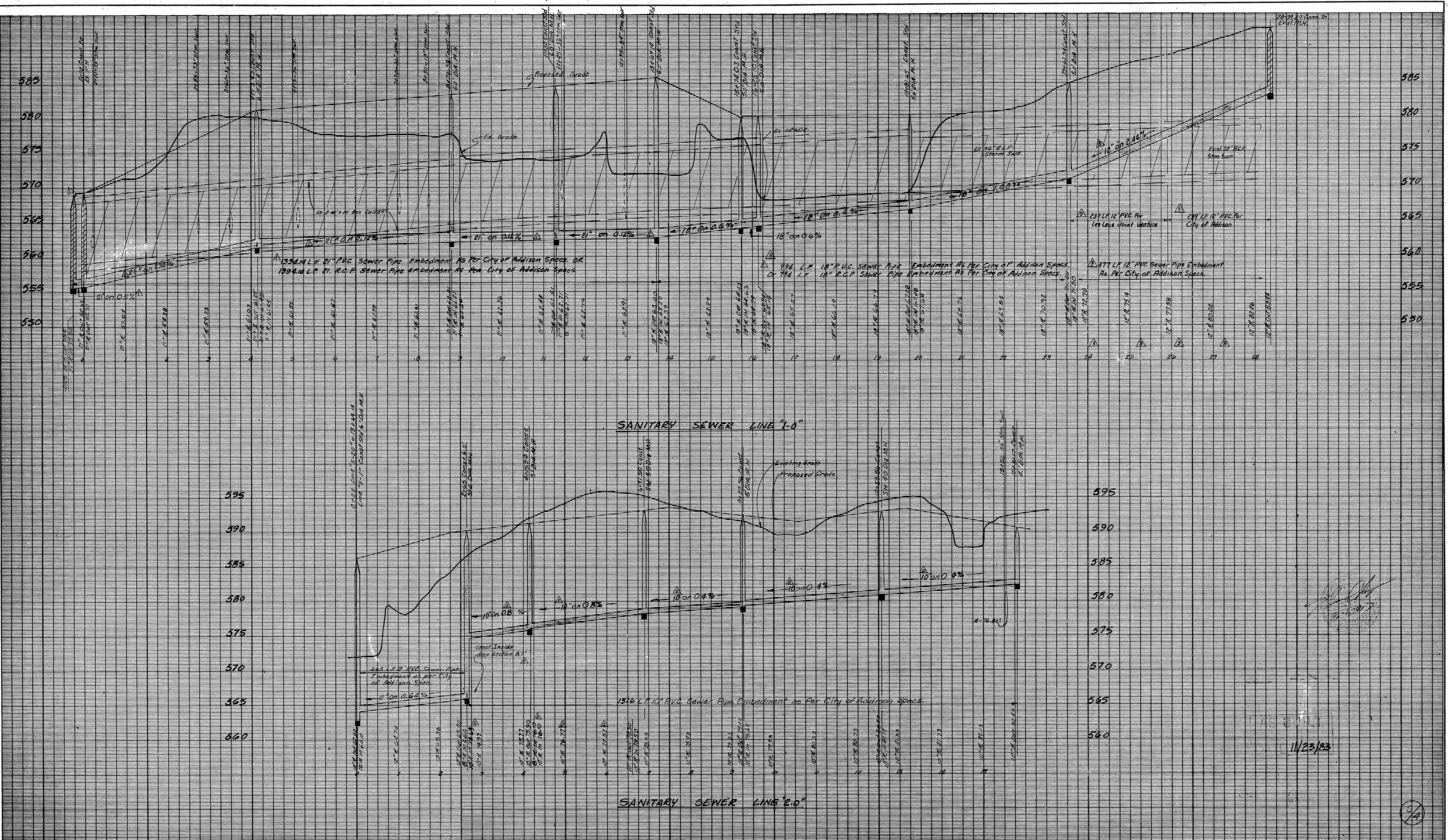
- "□" Top of Curb At The Center Of A 10' Inlet And 75' ± West of Centerline Commercial At The North Side Of Beltline Road Elev. 580.83
- "□" Top of Concrete Footing At N.W. Corner Tower #12 N-3W-T288 ELEV. 605.20

Size Of Pipe To Trench Dia	Embedment Dia. To Trench Dia	Trench Width To Bed In Inches
6" PVC Sewer	8 1/2"	24"
10" PVC Sewer	12 1/2"	26"
12" PVC Water	13 1/2"	29"
18" VCT Sewer	23 0"	39"

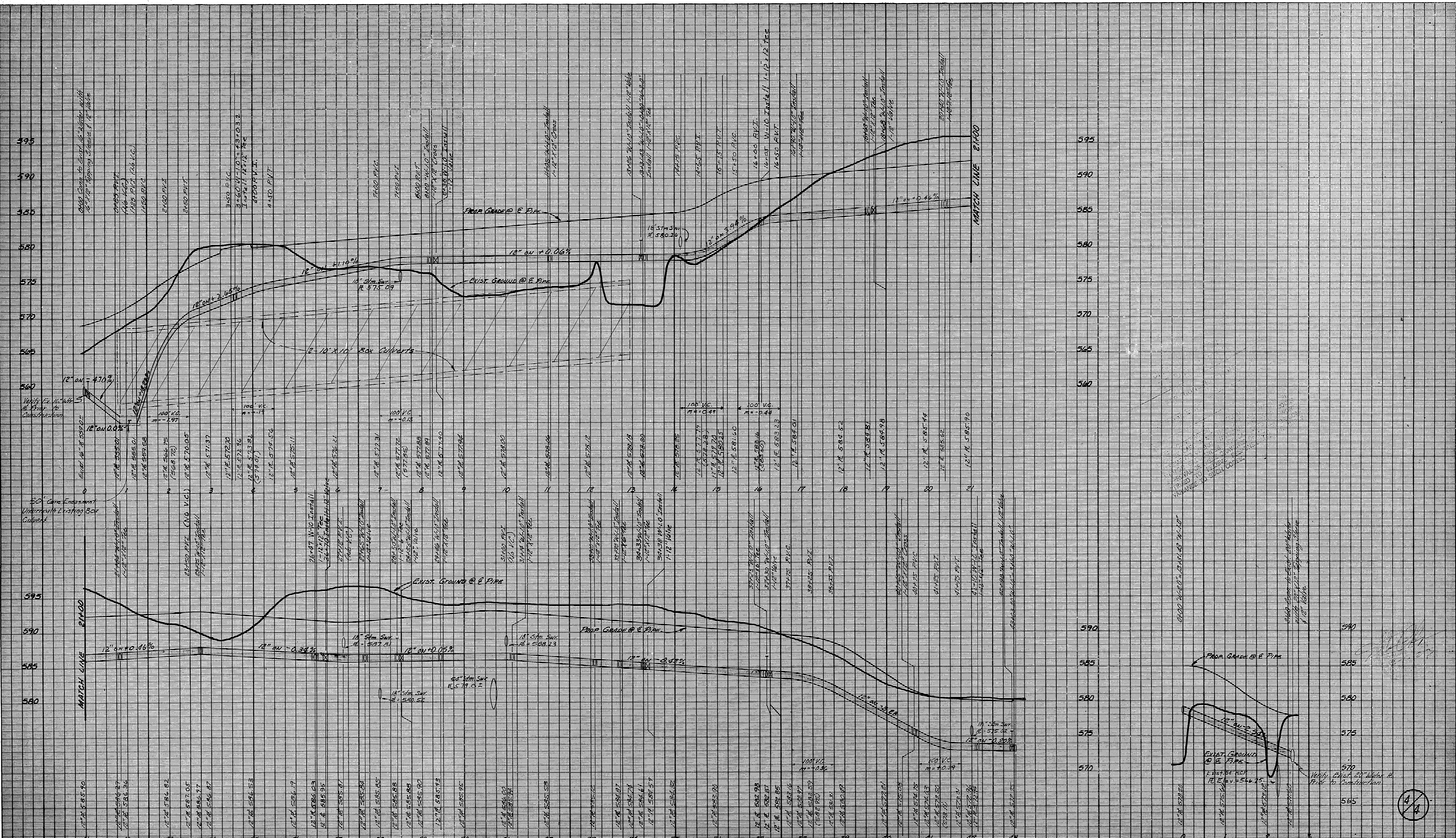
NOTE: HYDRANTS SHALL BE PLACED 4.0 FEET BEHIND CURB UNLESS OTHERWISE INDICATED.

REVISED 9-15-83
 REVISED 8-24-83
CONSTRUCTION SET
 8/10/83

SANITARY SEWER & WATER PLAN						
LES LACS PLAZA						
CITY OF ADDISON, TEXAS						
RAYMOND L. GOODSON, JR., INC., ENGINEERS						
DESIGN	DRAWN	DATE	SCALE	NOTES	FILE	NO.
RLG INC.	RLG INC.	AUGUST 1983	1" = 100'	RLG INC.	80	95



SANITARY SEWER PROFILE						
LES LACS PLAZA						
CITY OF ADDISON, TEXAS						
RAYMOND L. GOODSON JR INC, ENGINEERS						
DESIGN	DRAWN	DATE	SCALE	NOTES	FILE	NO.
RLG INC.	RLG INC.	AUGUST 1983	1"=100'H 1"=6'V	RLG INC.	80	95



BENCH MARKS
 "Q" Top of Curb at the center of 10' Inlet
 75' E. West of the centerline of Commercial
 Drive at the North Side of Ballline Road
 Elev. 580.83
 "D" Top of concrete footing at Northwest
 Corner Tower #12 N. 34-7288
 Elev. 605.20

REVISED 8-24-83
CONSTRUCTION SET
8/10/83

WATER PROFILES					
LES LACS PLAZA					
CITY OF ADDISON, TEXAS					
RAYMOND L. GOODSON JR. INC., ENGINEERS					
DESIGN	DRAWN	DATE	SCALE	NOTES	FILE
R.L.G. INC.	R.L.G. INC.	AUGUST 1983	1"=100 H 1"=6' V		80
					95

