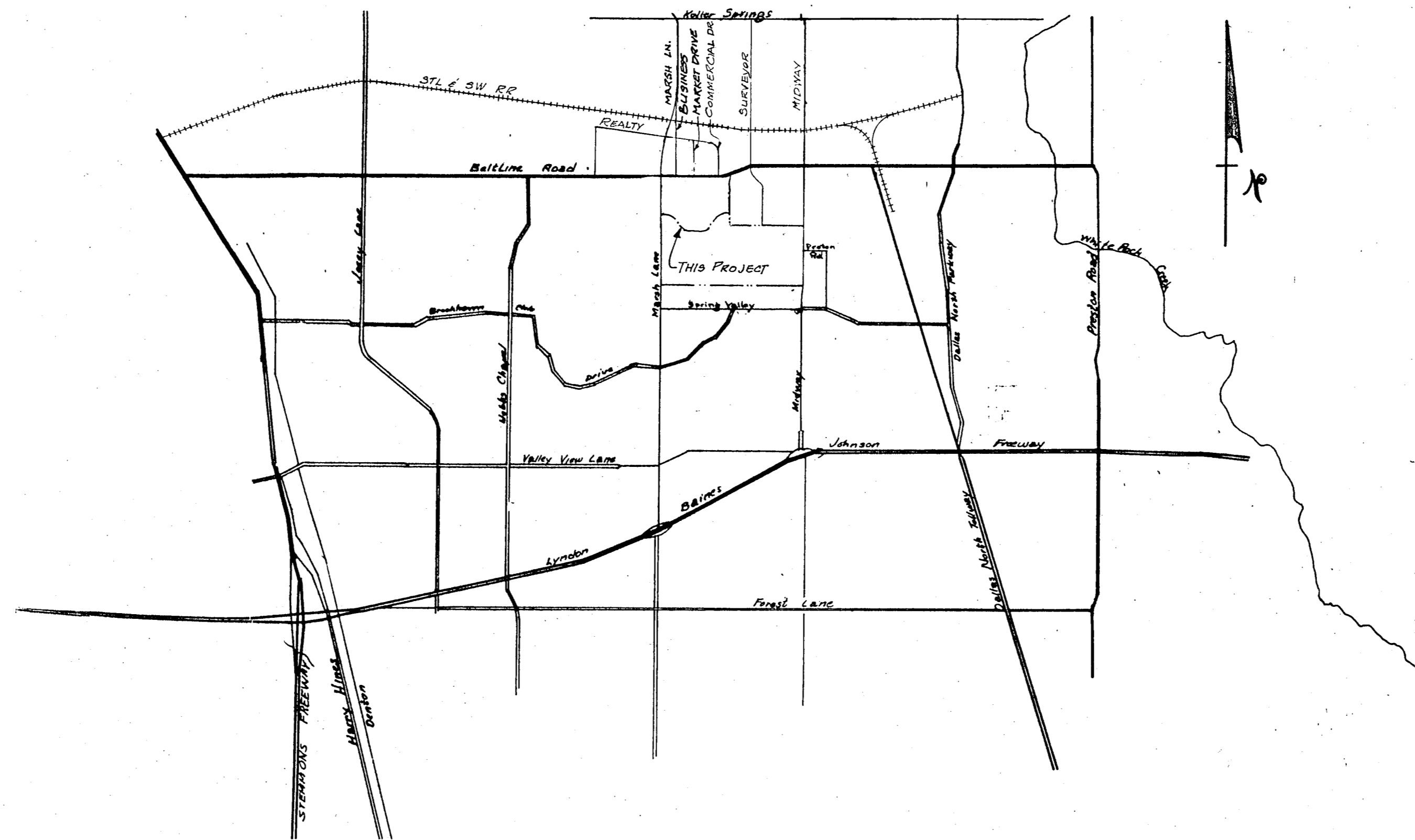


LES LACS PLAZA

for

LES LACS PLAZA JOINT VENTURE



VICINITY MAP

CITY OF ADDISON
APPROVED
 FOR CONSTRUCTION
 BUILDING DEPARTMENT
 DATE: 8-22-83
 NOTE: CONTRACTOR IS HEREBY INSTRUCTED TO EXERCISE CARE IN MEETING OR EXCEEDING ALL REQUIREMENTS OF BOTH NATIONAL AND LOCAL CODES AND/OR ORDINANCES APPLICABLE TO HIS WORK. APPROVAL OF THESE DRAWINGS SHALL NOT BE CONSTRUED TO RELIEVE RESPONSIBILITY OR INCURRED VARIANCE TO SUCH CODES.

[Signature]
 8-1-83

INDEX

- 1 - COVER SHEET
- 2 - SANITARY SEWER & WATER PLAN
- 3 - SANITARY SEWER PROFILE
- 4 - WATER PROFILE

ACCEPTED:

CONTRACTOR
TEX-CON

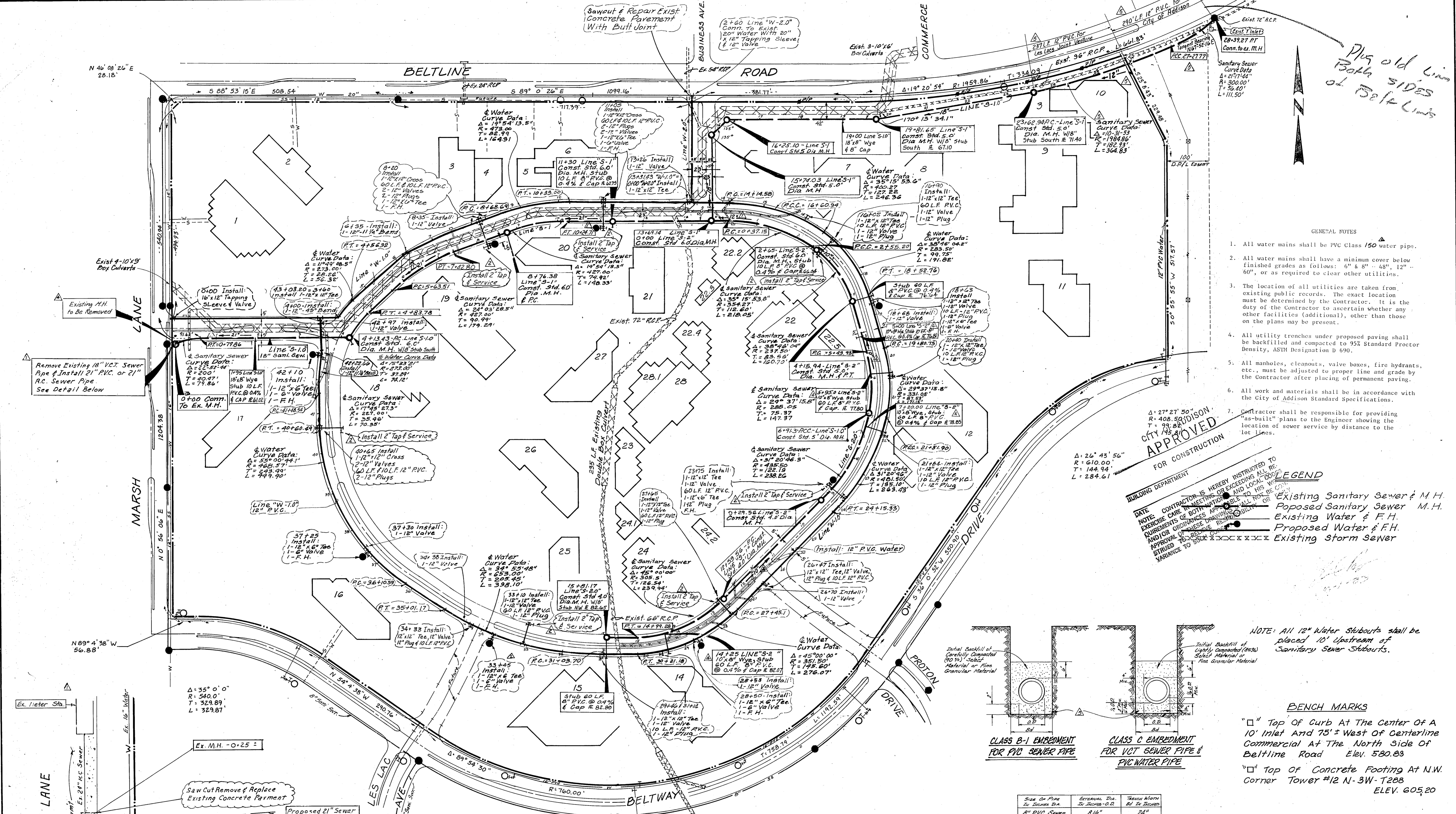
OWNER
LES LACS PLAZA JOINT VENTURE

DESIGNED BY

RAYMOND L. GOODSON JR., INCORPORATED, CONSULTING ENGINEERS
 3409 OAK GROVE
 528-2200
 DALLAS, TEXAS
 75204

REVISED 9-15-83
REVISED 8-24-83
CONSTRUCTION SET
8/10/83

1/4



- GENERAL NOTES
- All water mains shall be PVC Class 150 water pipe.
 - All water mains shall have a minimum cover below finished grades as follows: 6" & 8" - 48", 12" - 60", or as required to clear other utilities.
 - The location of all utilities are taken from existing public records. The exact location must be determined by the Contractor. It is the duty of the Contractor to ascertain whether any other facilities (additional), other than those on the plans may be present.
 - All utility trenches under proposed paving shall be backfilled and compacted to 95% Standard Proctor Density, ASTM Designation D 690.
 - All manholes, cleanouts, valve boxes, fire hydrants, etc., must be adjusted to proper line and grade by the Contractor after placing of permanent paving.
 - All work and materials shall be in accordance with the City of Addison Standard Specifications.
 - Contractor shall be responsible for providing "as-built" plans to the Engineer showing the location of sewer service by distance to the lot lines.

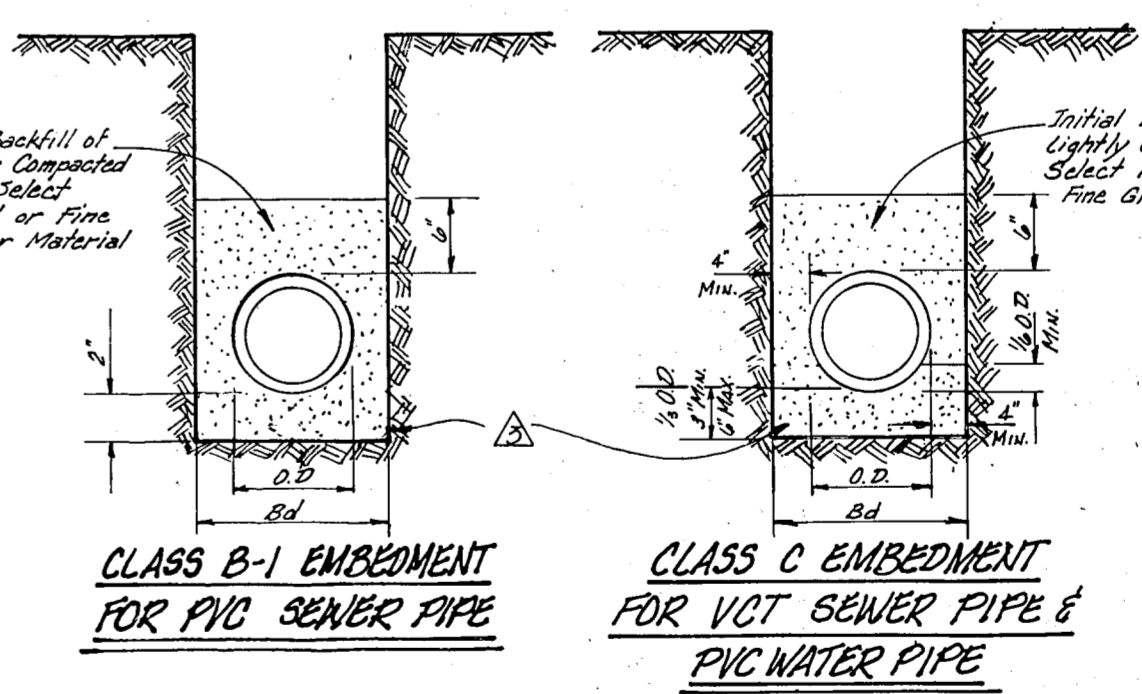
CITY OF ADDISON
APPROVED
FOR CONSTRUCTION

BUILDING DEPARTMENT

DATE: 7/11/83
NOTE: CONTRACTOR IS HEREBY INSTRUCTED TO EXERCISE CARE IN MEETING OR EXCEEDING ALL REQUIREMENTS OF BOTH APPLICABLE STATE AND LOCAL ORDINANCES AND LOCAL CODES. APPROVAL OF THESE DRAWINGS IS NOT BECOME A WARRANTY TO SUBMITTER.

LEGEND

- Existing Sanitary Sewer & M.H.
- Proposed Sanitary Sewer M.H.
- Existing Water & F.H.
- Proposed Water & F.H.
- Existing Storm Sewer



NOTE: All 12" Water Stubsouts shall be placed 10' upstream of Sanitary Sewer Stubsouts.

BENCH MARKS

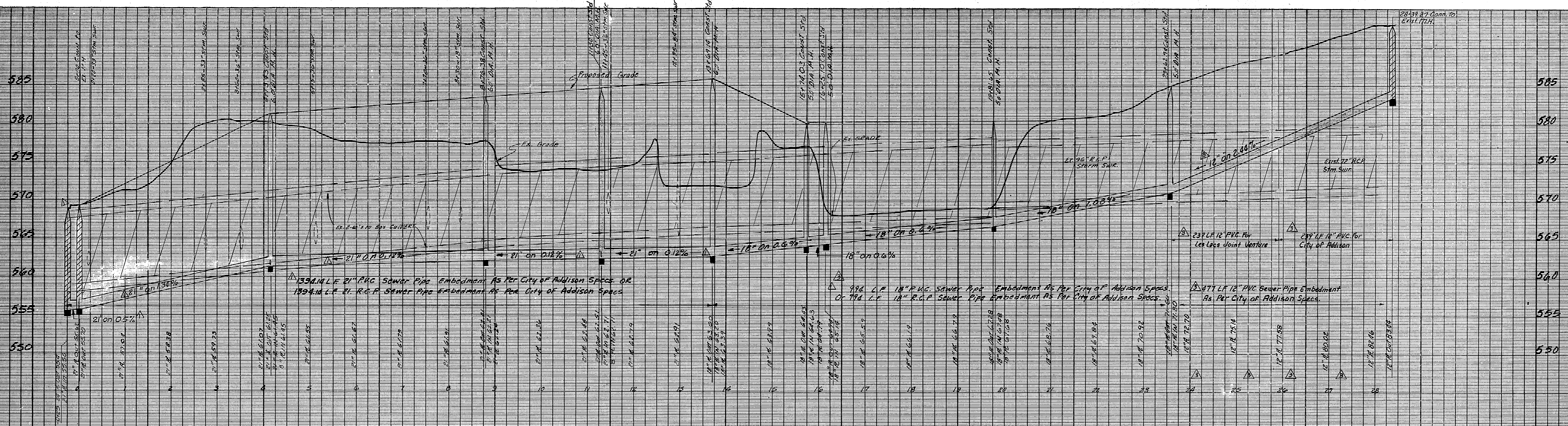
- Top of Curb at the Center of a 10" Inlet And 75'± West of Centerline Commercial at the North Side of Beltline Road Elev. 580.83
- Top of Concrete Footing at N.W. Corner Tower #12 N-3W-T288 Elev. 605.20

Size of Pipe to Embed	Embedment Dia. to Dimension	Bench Mark
8" PVC Sewer	8 1/2"	24"
10" PVC Sewer	10 3/8"	26"
12" PVC Water	13 3/8"	29"
18" VCT Sewer	23 1/2"	39"

NOTE: HYDRANTS SHALL BE PLACED 4.0 FEET BEHIND CURB UNLESS OTHERWISE INDICATED.

REVISED 9-15-83
REVISED 8-24-83
CONSTRUCTION SET
8/10/83

SANITARY SEWER & WATER PLAN						
LES LACS PLAZA						
CITY OF ADDISON, TEXAS						
RAYMOND L. GOODSON JR. INC., ENGINEERS						
DESIGN	DRAWN	DATE	SCALE	NOTES	FILE	NO.
RLG INC.	RLG INC.	AUGUST 1983	1"=100'	RLG INC.	80	95



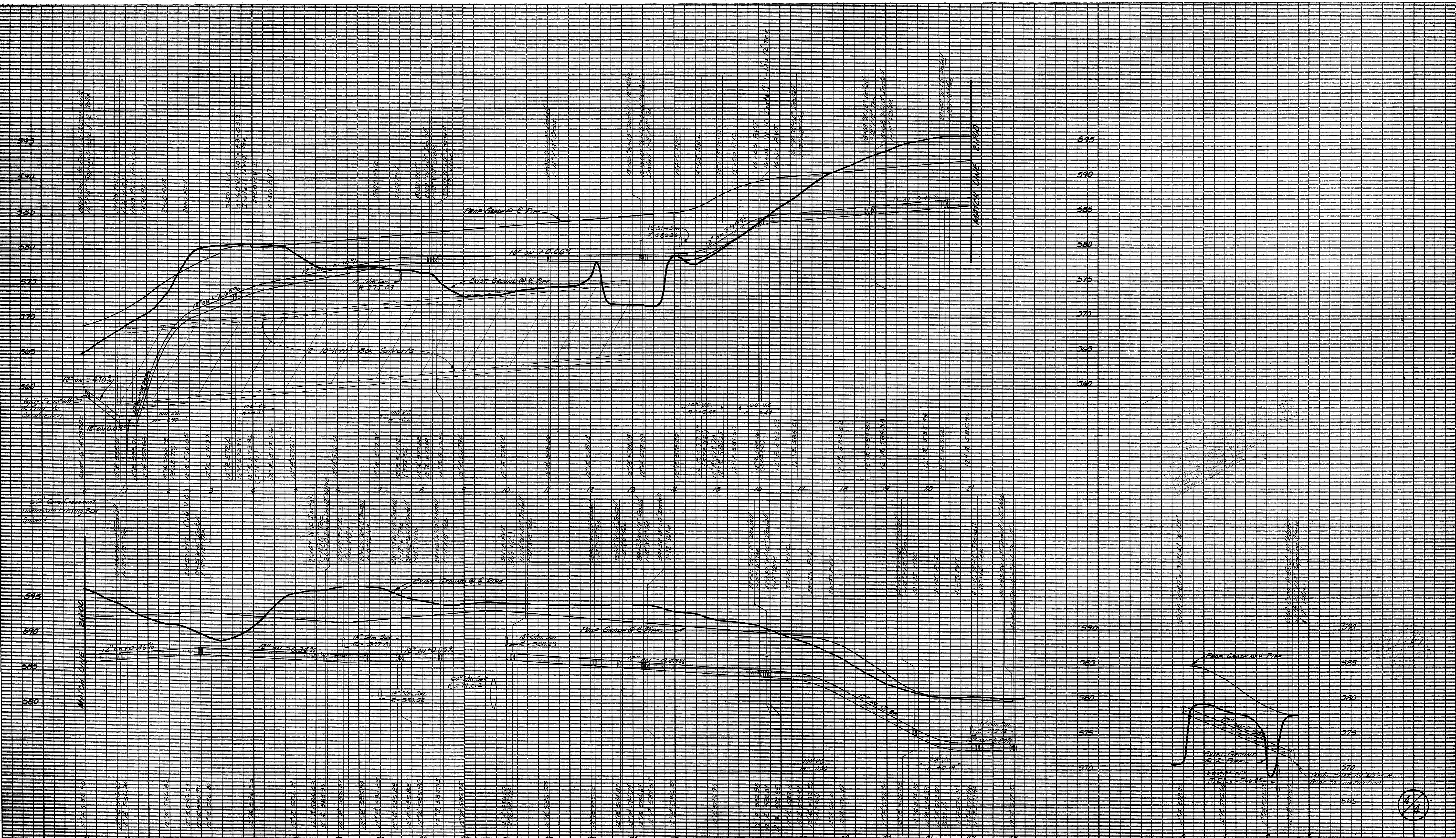
BENCH MARKS
 □ Top of Curb At The Center of A 10' Inlet And 75'± West of Centerline Commercial At The North Side of Beltline Road. Elev. 580.83
 □ Top of Concrete Footing At N.W. Corner Tower #12 N-3W-T288 ELEV. 605.20

REVISED 9-15-83
REVISED 8-24-83
CONSTRUCTION SET
8/10/83

SANITARY SEWER PROFILE						
LES LACS PLAZA						
CITY OF ADDISON, TEXAS						
RAYMOND L. GOODSON JR INC, ENGINEERS						
DESIGN	DRAWN	DATE	SCALE	NOTES	FILE	NO.
RLG INC.	RLG INC.	AUGUST 1983	1"=100'H 1"=6'V	RLG INC.	80	95

△ Revised 7-6-83
 ▽ Revised 8-24-83
 ▽ Revised 9-15-83

3/4



REVISED 8-24-83

CONSTRUCTION SET
8/10/83

BENCH MARKS
 "Q" Top of Curb at the center of 10' Inlet
 75' E. West of the centerline of Commercial
 Drive at the North Side of Ballline Road
 Elev. 580.83
 "D" Top of concrete footing at Northwest
 Corner Tower #12 N. 34-7288
 Elev. 605.20

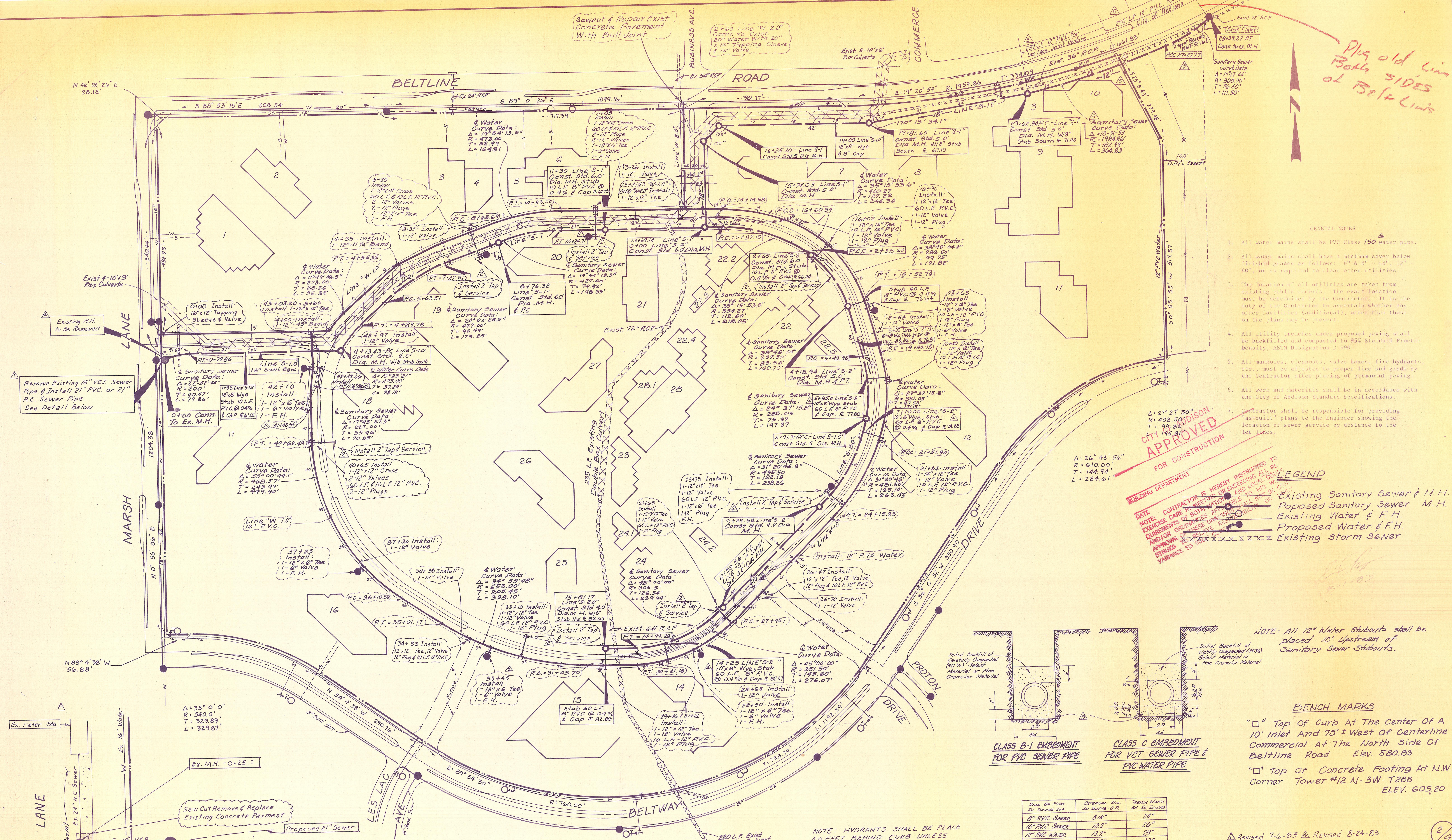
WATER PROFILES
LES LACS PLAZA

CITY OF ADDISON, TEXAS
 RAYMOND L. GOODSON JR. INC., ENGINEERS

DESIGN	DRAWN	DATE	SCALE	NOTES	FILE	NO.
R.L.G. INC.	R.L.G. INC.	AUGUST 1983	1"=100 H 1"=6' V		80	95



Plug old line
Both sides
of Belt Lines



- GENERAL NOTES
- All water mains shall be PVC Class 150 water pipe.
 - All water mains shall have a minimum cover below finished grades as follows: 6" & 8" - 48", 12" - 60", or as required to clear other utilities.
 - The location of all utilities are taken from existing public records. The exact location must be determined by the Contractor. It is the duty of the Contractor to ascertain whether any other facilities (additional), other than those on the plans may be present.
 - All utility trenches under proposed paving shall be backfilled and compacted to 95% Standard Proctor Density, ASTM Designation D 690.
 - All manholes, cleanouts, valve boxes, fire hydrants, etc., must be adjusted to proper line and grade by the Contractor after placing of permanent paving.
 - All work and materials shall be in accordance with the City of Addison Standard Specifications.
 - Contractor shall be responsible for providing "as-built" plans to the Engineer showing the location of sewer service by distance to the lot lines.

CITY OF ADDISON
APPROVED
FOR CONSTRUCTION

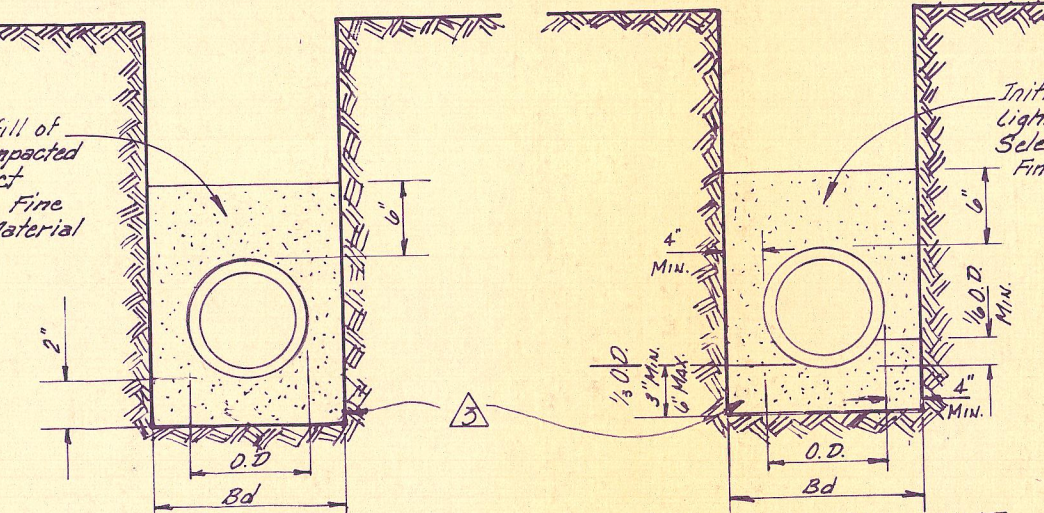
BUILDING DEPARTMENT

DATE: _____
NOTE: CONTRACTOR IS HEREBY INSTRUCTED TO EXERCISE CARE IN THE INSTALLATION OF ALL REVISIONS OF BOTH WATER AND SANITARY SEWER UTILITIES TO THIS SET OF DRAWINGS. APPROVAL OF THESE DRAWINGS AND/OR APPROVAL OF ANY VARIANCE TO SUCH DRAWINGS SHALL BE STRIPPED TO THE CONTRACTOR.

LEGEND

- Existing Sanitary Sewer & M.H.
- Proposed Sanitary Sewer M.H.
- Existing Water & F.H.
- Proposed Water & F.H.
- Existing Storm Sewer

NOTE: All 12" Water Subouts shall be placed 10' Upstream of Sanitary Sewer Subouts.



BENCH MARKS

- " Top of Curb At The Center Of A 10' Inlet And 75' ± West Of Centerline Commercial At The North Side Of Beltline Road Elev. 580.83
- " Top of Concrete Footing At N.W. Corner Tower #12 N-3W-T288 Elev. 605.20

Size Of Pipe	Excavating Dia. In Inches	Trench Width In Inches
8" PVC SEWER	8 1/2"	24"
10" PVC SEWER	10 1/2"	26"
12" PVC WATER	13 1/2"	29"
18" VCT SEWER	23 0"	39"

NOTE: HYDRANTS SHALL BE PLACE 4.0 FEET BEHIND CURB UNLESS OTHERWISE INDICATED.

REVISED 9-15-83
REVISED 8-24-83
CONSTRUCTION SET
8/10/83

SANITARY SEWER & WATER PLAN						LES LACS PLAZA	
CITY OF ADDISON, TEXAS						RAYMOND L. GOODSON JR. INC., ENGINEERS	
DESIGN	DRAWN	DATE	SCALE	NOTES	FILE	NO.	
RLG INC.	RLG INC.	AUGUST 1983	1" = 100'	RLG INC.	80	95	