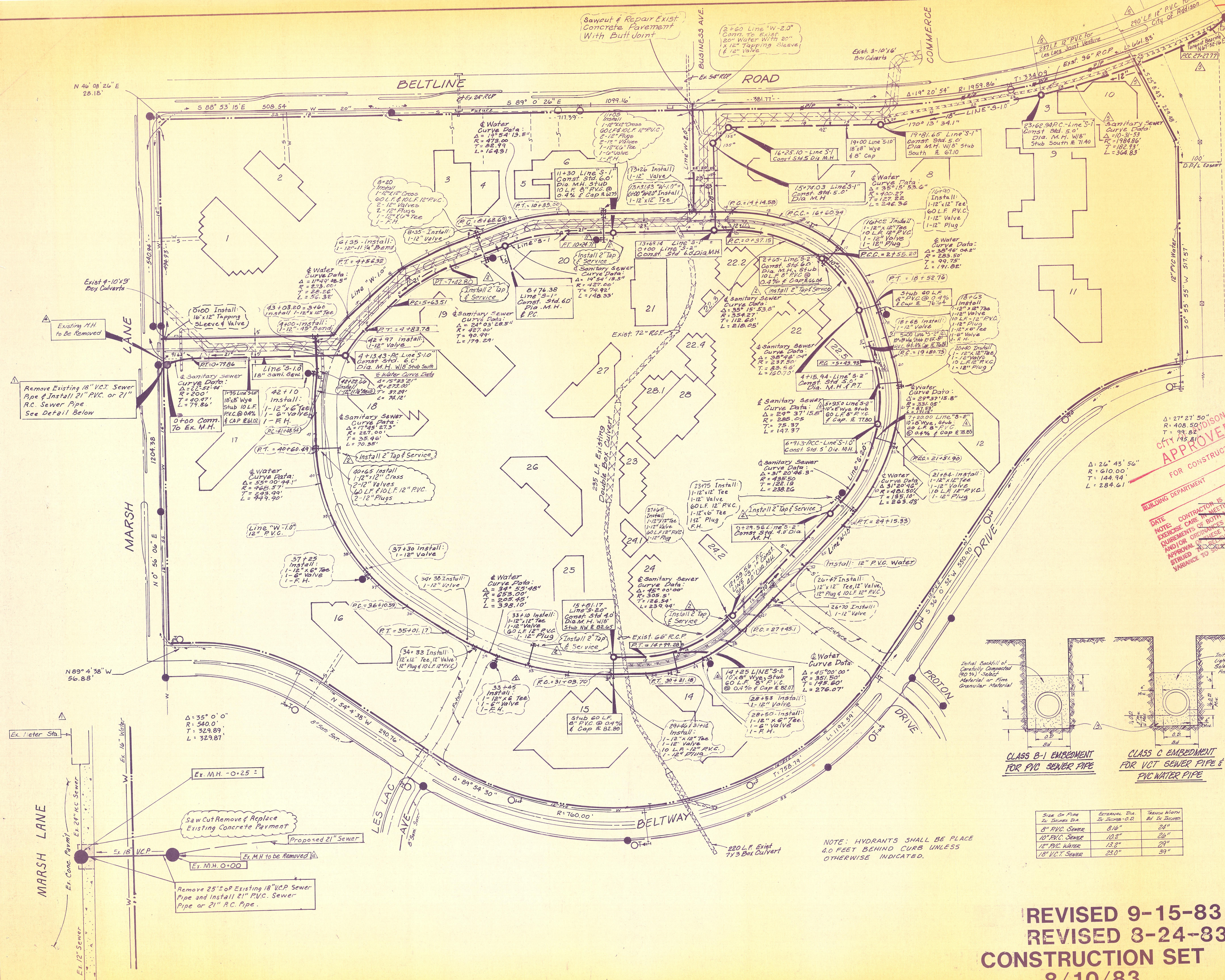


Plug old line
Both sides
of Belt Lines



CITY OF ADDISON
APPROVED
FOR CONSTRUCTION

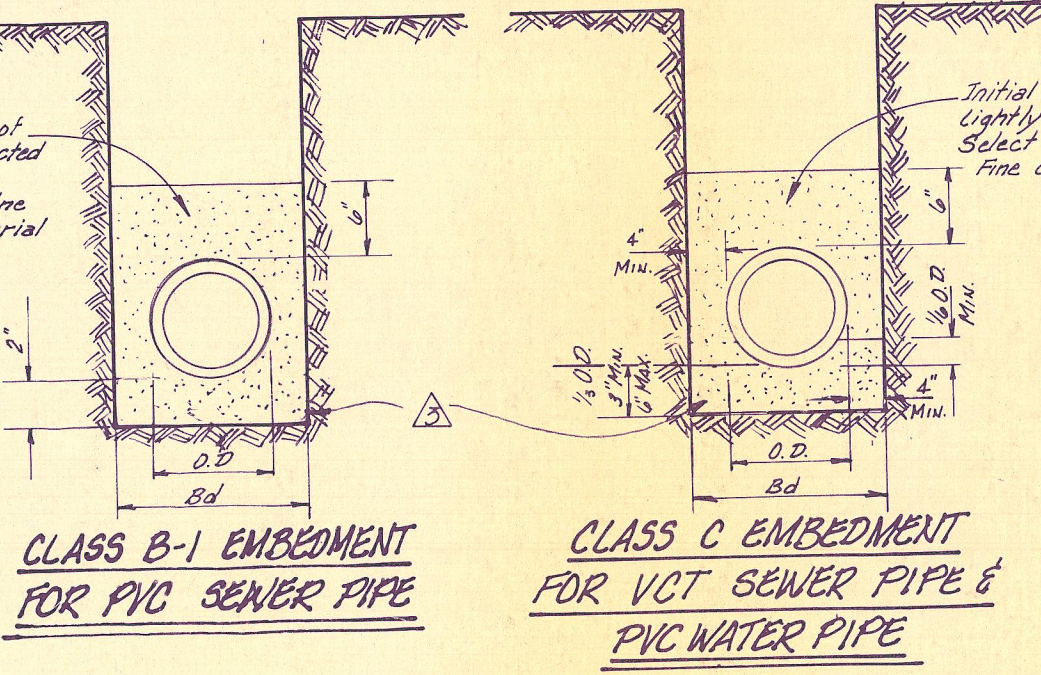
BUILDING DEPARTMENT

DATE: _____
NOTE: CONTRACTOR IS HEREBY INSTRUCTED TO EXERCISE CARE IN THE INSTALLATION OF AND TO HIS OWNERS REQUIREMENTS OF BOTH MATERIALS AND LABOR. APPROVAL OF THESE DRAWINGS IS NOT TO BE CONSIDERED A GUARANTEE OF ACCURACY OR LIABILITY. VARIANCE TO _____

LEGEND

- Existing Sanitary Sewer & M.H.
- Proposed Sanitary Sewer M.H.
- Existing Water & F.H.
- Proposed Water & F.H.
- Existing Storm Sewer

NOTE: All 12" Water Subouts shall be placed 10' Upstream of Sanitary Sewer Subouts.



BENCH MARKS

- " Top of Curb At The Center Of A 10' Inlet And 75' West Of Centerline Commercial At The North Side of Beltline Road Elev. 580.83
- " Top of Concrete Footing At N.W. Corner Tower #12 N-3W-T288 Elev. 605.20

Size Of Pipe	Excavation Dia	Trench Width
8" PVC SEWER	8 1/2"	24"
10" PVC SEWER	10 1/2"	26"
12" PVC WATER	13 1/2"	29"
18" V.C.T. SEWER	23 0"	39"

NOTE: HYDRANTS SHALL BE PLACE 4.0 FEET BEHIND CURB UNLESS OTHERWISE INDICATED.

REVISED 9-15-83
REVISED 8-24-83
CONSTRUCTION SET
8/10/83

SANITARY SEWER & WATER PLAN					
LES LACS PLAZA					
CITY OF ADDISON, TEXAS					
RAYMOND L. GOODSON JR. INC., ENGINEERS					
DESIGN	DRAWN	DATE	SCALE	NOTES	FILE NO.
RLG INC.	RLG INC.	AUGUST 1983	1" = 100'	RLG INC.	80 95