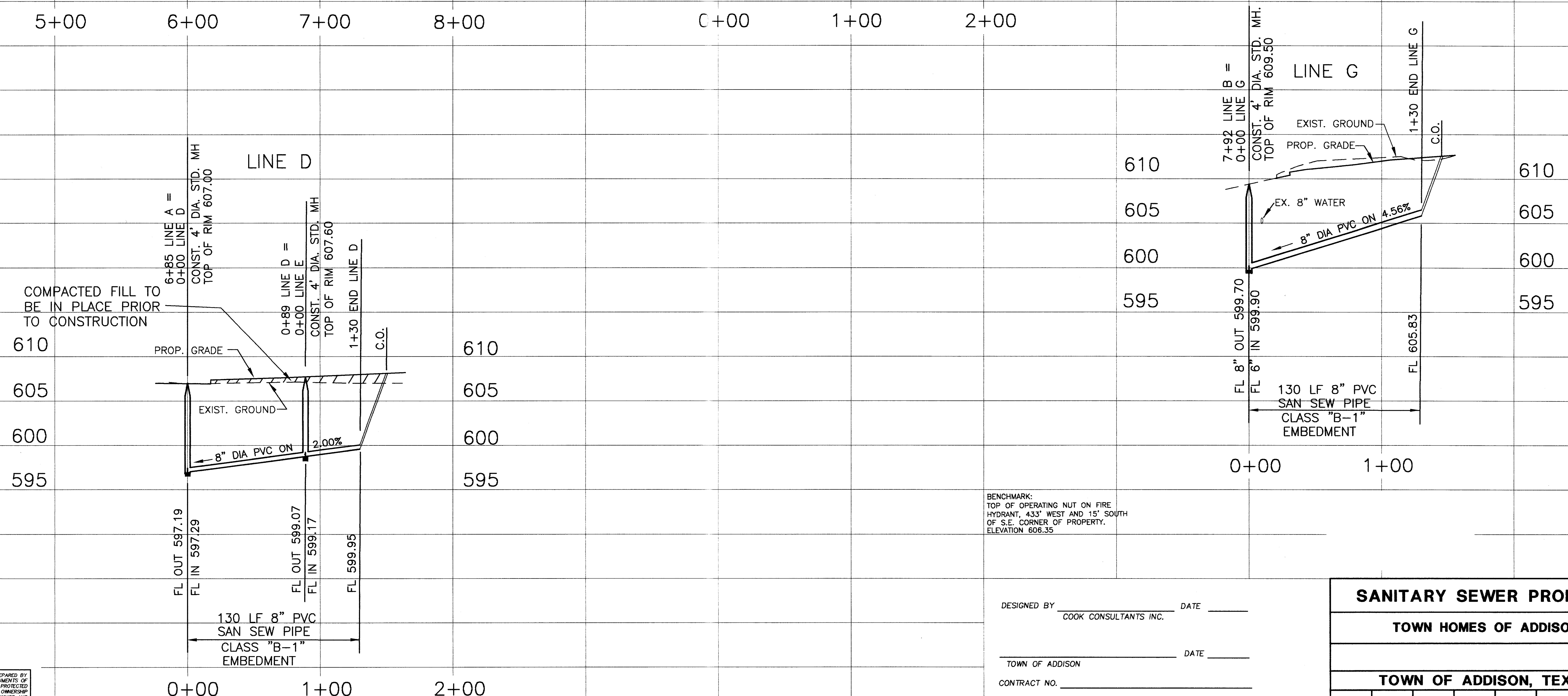


5+00      6+00      7+00      8+00      C+00      1+00      2+00



0+00      1+00      2+00      0+00      1+00

BENCHMARK:  
TOP OF OPERATING NUT ON FIRE  
HYDRANT, 433' WEST AND 15' SOUTH  
OF S.E. CORNER OF PROPERTY.  
ELEVATION 606.35

THE DRAWING, SPECIFICATIONS, AND OTHER DOCUMENTS PREPARED BY COOK CONSULTANTS, INC. FOR THIS PROJECT ARE INSTRUMENTS OF PROFESSIONAL SERVICE, AND AS SUCH, ARE RESERVED AND PROTECTED BY STATUTE. COOK CONSULTANTS, INC. AS AUTHOR RETAINS OWNERSHIP OF THE DOCUMENTS INCLUDING THE COPYRIGHT. THE DRAWINGS AND OTHER DOCUMENTS MAY NOT BE REPRODUCED OR USED BY ANYONE FOR ANY REASON WITHOUT THE EXPRESS WRITTEN CONSENT OF COOK CONSULTANTS, INC.

THESE DRAWINGS ARE PROVIDED FOR "AS-BUILT" DRAWINGS BY OTHERS FOR THE CITY OF ADDISON

DESIGNED BY \_\_\_\_\_ DATE \_\_\_\_\_  
COOK CONSULTANTS, INC.

TOWN OF ADDISON DATE \_\_\_\_\_

CONTRACT NO. \_\_\_\_\_

CONTRACTOR \_\_\_\_\_

SANITARY SEWER PROFILES						
TOWN HOMES OF ADDISON						
TOWN OF ADDISON, TEXAS						
DESIGNED	DRAWN	DATE	SCALE	NOTES	FILE	NO.
LD	SC	8/2/96	1"=40'H 1"=6'V			